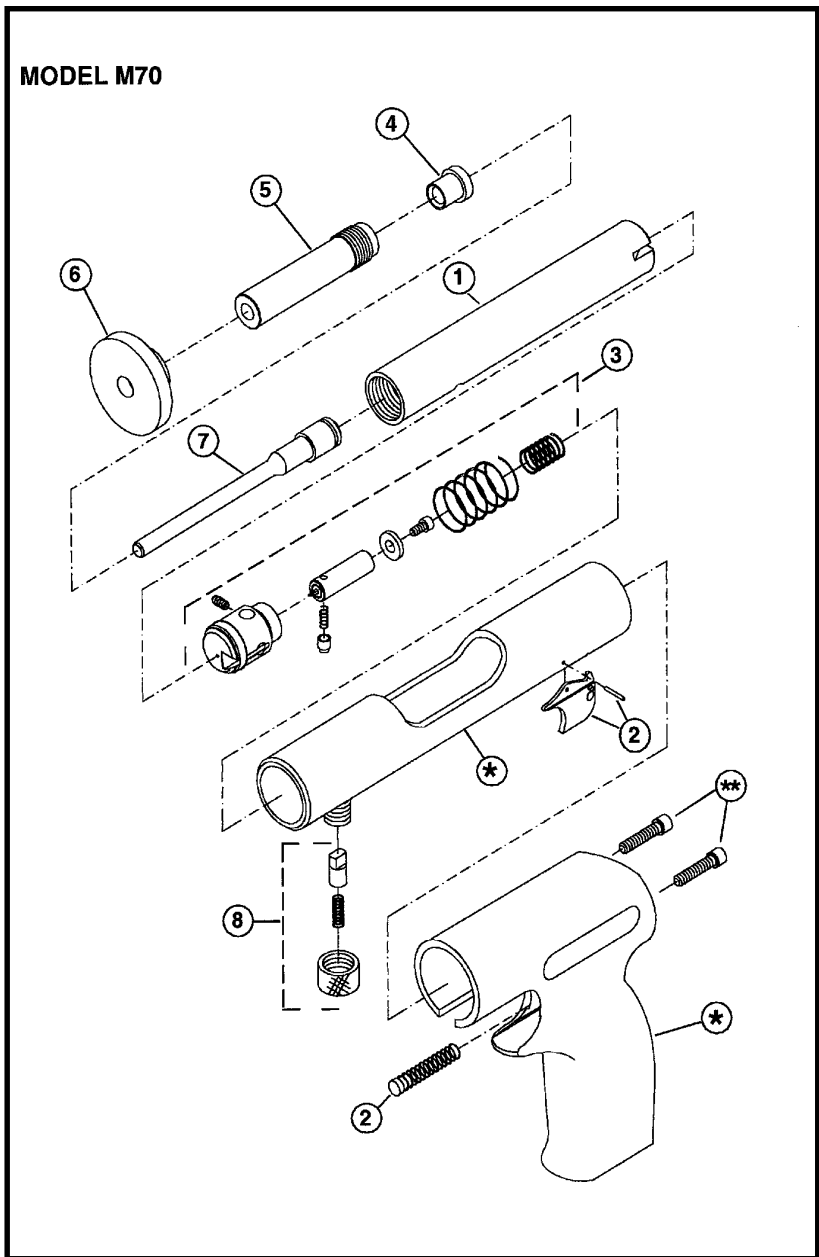


PARTS SCHEMATIC



PARTS SCHEMATIC

PARTS LISTING / MAINTENANCE

M70 TOOL PARTS LIST

KEY	PART NO.	DESCRIPTION
1	53202	BARREL
2	533600	TRIGGER ASSEMBLY AND SPRING
3	53330A	FIRING MECHANISM ASSEMBLY
4	53109	BUFFER
5	53101	MUZZLE BUSHING
6	53104	SPALL GUARD
8	53115A	PAWL ASSEMBLY
9	24853	PISTON RING (NOT SHOWN)
*	HANDLE ASSEMBLY AND RECEIVER NOT AVAILABLE AS SPARE PARTS	
**	STANDARD SOCKET HEAD CAP SCREW -1" LONG X 1/4"-28 THREAD	

MAINTENANCE

IMPROPERLY MAINTAINED TOOLS CAN CAUSE SERIOUS INJURIES TO
TOOL OPERATORS AND BYSTANDERS

CLEAN TOOL DAILY

Always make sure the tool is not loaded before performing any service or repair and always wear safety goggles when cleaning or servicing the tool.

NORMAL CLEANING

All front end parts shown in the disassembly section are to be cleaned daily with a good detergent oil and wire brush. Remove all dirt and carbon buildup and wipe parts dry with a clean rag. Check all parts for wear or damage before reassembly and replace or repair any worn or damaged parts.

COMPLETE CLEANING / GENERAL MAINTENANCE

Heavy use or constant exposure to dirt and debris may require that the tool be cleaned more extensively. Complete disassembly and cleaning of all parts may be necessary to restore the tool to normal operation. General maintenance should be performed every six months or more often if the tool is subjected to heavy use. Contact your authorized Ramset Distributor for assistance.

**ALWAYS FUNCTION TEST THE TOOL AFTER PERFORMING ANY SERVICE.
SEE PAGE 9 FOR DETAILS ON THE FUNCTION TEST.**

PARTS LISTING / MAINTENANCE