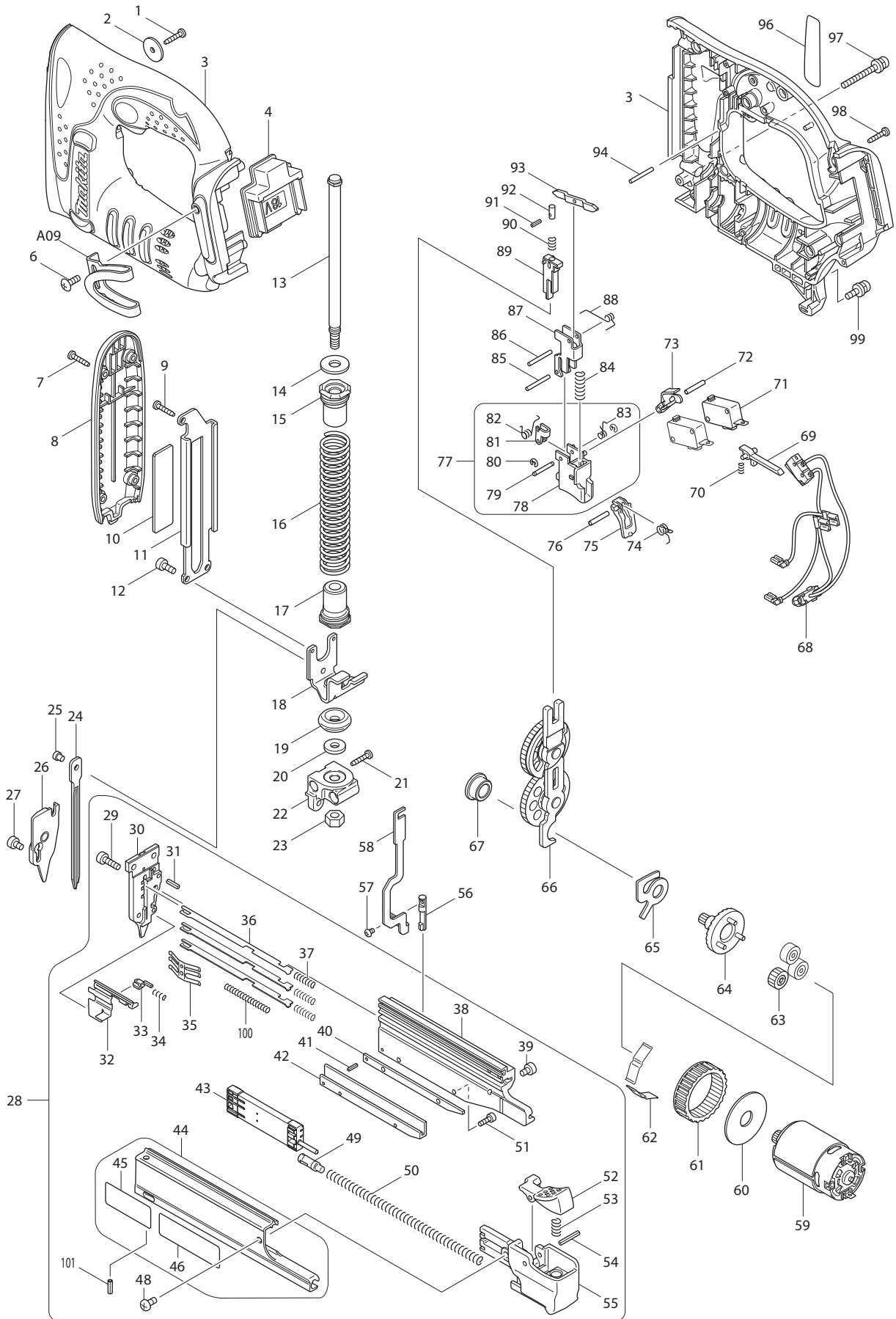




09 - 2011  
LXTP01 / LXTP01Z / LXTP01Z1  
18V PIN NAILER



| Item No. | Type | Sub  | Part No. | Description                             | Qty | Unit |
|----------|------|------|----------|---|-----|------|
| 1        |      |      | 266130-9 | TAPPING SCREW BIND PT 3X16              | 1   | PC.  |
| 2        |      |      | 267071-2 | FLAT WASHER 4                           | 1   | PC.  |
| 3        |      |      | 187098-5 | HOUSING SET                             | 1   | SET  |
| 4        |      |      | 643843-3 | TERMINAL                                | 1   | PC.  |
| 6        |      |      | 251314-2 | + SCREW M4X12 (F/ Item No. 9 TOOL HOOK) | 1   | PC.  |
| 7        |      |      | 266130-9 | TAPPING SCREW BIND PT 3X16              | 4   | PC.  |
| 8        |      |      | 419450-2 | FRONT COVER                             | 1   | PC.  |
| 9        |      |      | 266130-9 | TAPPING SCREW BIND PT 3X16              | 1   | PC.  |
| 10       |      |      | 345704-0 | UPPER PLATE                             | 1   | PC.  |
| 11       |      |      | 345703-2 | RAIL                                    | 1   | PC.  |
| 12       |      |      | 922112-8 | HEX. SOCKET HEAD BOLT M4X10             | 2   | PC.  |
| 13       |      |      | 324683-5 | GUIDE BOLT                              | 1   | PC.  |
| 14       |      |      | 253762-1 | FLAT WASHER 8                           | 1   | PC.  |
| 15       |      |      | 421962-3 | SPRING HOLDER                           | 1   | PC.  |
| 16       |      |      | 233472-6 | COMPRESSION SPRING 17                   | 1   | PC.  |
| 17       |      |      | 421962-3 | SPRING HOLDER                           | 1   | PC.  |
| 18       |      |      | 345701-6 | HAMMER                                  | 1   | PC.  |
| 19       |      |      | 421956-8 | CUSHION                                 | 1   | PC.  |
| 20       |      |      | 253804-1 | FLAT WASHER 6                           | 1   | PC.  |
| 21       |      |      | 266130-9 | TAPPING SCREW BIND PT 3X16              | 1   | PC.  |
| 22       |      |      | 318025-3 | HOLDER                                  | 1   | PC.  |
| 23       |      |      | 931302-2 | HEX. NUT M6                             | 1   | PC.  |
| 24       |      |      | 345702-4 | DRIVER                                  | 1   | PC.  |
| 25       |      |      | 268157-5 | PIN 4                                   | 1   | PC.  |
| 26       |      |      | 168430-2 | DRIVER GUIDE COVER                      | 1   | PC.  |
| 27       |      |      | 922102-1 | HEX. SOCKET HEAD BOLT M4X6              | 2   | PC.  |
| 28       |      |      | 135370-9 | MAGAZINE ASSEMBLY                       | 1   | PC.  |
|          |      | INC. |          | Item No. 29-44,48-55,100,101            |     |      |
| 29       |      |      | 922122-5 | HEX.SOCKET HEAD BOLT M4X14              | 1   | PC.  |
| 30       |      |      | 310173-4 | DRIVER GUIDE                            | 1   | PC.  |
| 31       |      |      | 951054-9 | SPRING PIN 3-10                         | 2   | PC.  |
| 32       |      |      | 345699-7 | PUSHER                                  | 1   | PC.  |
| 33       |      |      | 310176-8 | STOPPER                                 | 1   | PC.  |
| 34       |      |      | 233018-8 | COMPRESSION SPRING 3                    | 1   | PC.  |
| 35       |      |      | 232229-2 | LEAF SPRING                             | 1   | PC.  |
| 36       |      |      | 346239-4 | NAIL STOPPER                            | 3   | PC.  |
| 37       |      |      | 233476-8 | COMPRESSION SPRING 4                    | 3   | PC.  |
| 38       |      |      | 318024-5 | MAGAZINE                                | 1   | PC.  |
| 39       |      |      | 922102-1 | HEX. SOCKET HEAD BOLT M4X6              | 1   | PC.  |
| 40       |      |      | 345696-3 | SPACER                                  | 1   | PC.  |
| 41       |      |      | 951001-0 | SPRING PIN 2-8                          | 1   | PC.  |
| 42       |      |      | 318023-7 | LOWER RAIL                              | 1   | PC.  |
| 43       |      |      | 452877-3 | NAIL GUIDE HOLDER                       | 1   | PC.  |
| 44       |      |      | 140414-2 | UPPER RAIL COMPLETE                     | 1   | PC.  |
|          |      | INC. |          | Item No. 45.46                          |     |      |
| 45       |      |      | 810310-5 | CAUTION LABEL (ENG)                     | 1   | PC.  |
| 46       |      |      | 810311-3 | CAUTION LABEL (FR)                      | 1   | PC.  |
| 48       |      |      | 911113-1 | PAN HEAD SCREW M4X10                    | 1   | PC.  |
| 49       |      |      | 419443-9 | SHOULDER PIN 5-7                        | 1   | PC.  |
| 50       |      |      | 233470-0 | COMPRESSION SPRING 5                    | 1   | PC.  |
| 51       |      |      | 266177-3 | HEX. SOCKET HEAD BOLT M3X10             | 2   | PC.  |
| 52       |      |      | 419446-3 | LEVER                                   | 1   | PC.  |
| 53       |      |      | 233117-6 | COMPRESSION SPRING 6                    | 1   | PC.  |
| 54       |      |      | 951066-2 | SPRING PIN 3-18                         | 1   | PC.  |
| 55       |      |      | 419444-7 | SLIDE DOOR CAP                          | 1   | PC.  |
| 56       |      |      | 268158-3 | PIN 5                                   | 1   | PC.  |

| Item No. | Type | Sub  | Part No. | Description                 | Qty | Unit |
|----------|------|------|----------|-----------------------------|-----|------|
| 57       |      |      | 265040-7 | + PAN HEAD SCREW M3X4       | 1   | PC.  |
| 58       |      |      | 345705-8 | LOCK ARM                    | 1   | PC.  |
| 59       |      |      | 629910-8 | DC MOTOR                    | 1   | PC.  |
| 60       |      |      | 267053-4 | FLAT WASHER 12              | 1   | PC.  |
| 61       |      |      | 227166-3 | INTERNAL GEAR 69            | 1   | PC.  |
| 62       |      |      | 232230-7 | LEAF SPRING                 | 2   | PC.  |
| 63       |      |      | 221961-3 | SPUR GEAR 27                | 3   | PC.  |
| 64       |      |      | 154973-0 | SPUR GEAR 7 COMPLETE        | 1   | PC.  |
| 65       |      |      | 345773-1 | ANTI BACK PLATE             | 1   | PC.  |
| 66       |      |      | 154972-2 | SPUR GEAR 55 COMPLETE       | 1   | PC.  |
| 67       |      |      | 214060-8 | PLANE BEARING 10            | 1   | PC.  |
| 68       |      |      | 620073-3 | LED CIRCUIT                 | 1   | PC.  |
| 69       |      |      | 419452-8 | LIGHT SWITCH ARM            | 1   | PC.  |
| 70       |      |      | 233032-4 | COMPRESSION SPRING 2        | 1   | PC.  |
| 71       |      |      | 651891-8 | SWITCH V-15-3A6             | 2   | PC.  |
| 72       |      |      | 256299-7 | PIN 3                       | 1   | PC.  |
| 73       |      |      | 419453-6 | LINK PLATE                  | 1   | PC.  |
| 74       |      |      | 231693-4 | TORSION SPRING 4            | 1   | PC.  |
| 75       |      |      | 419454-4 | SAFETY TRIGGER              | 1   | PC.  |
| 76       |      |      | 256299-7 | PIN 3                       | 1   | PC.  |
| 77       |      |      | 188168-3 | TRIGGER SET                 | 1   | PC.  |
|          |      | INC. |          | Item No. 78-83              |     |      |
| 78       |      |      | 419451-0 | TRIGGER                     | 1   | PC.  |
| 79       |      |      | 256771-9 | PIN 2.5                     | 1   | PC.  |
| 80       |      |      | 257926-9 | STOP RING E-2.0             | 2   | PC.  |
| 81       |      |      | 345707-4 | SWING ARM                   | 1   | PC.  |
| 82       |      |      | 231694-2 | TORSION SPRING 3            | 1   | PC.  |
| 83       |      |      | 231695-0 | TORSION SPRING 3            | 1   | PC.  |
| 84       |      |      | 233360-7 | COMPRESSION SPRING 4        | 1   | PC.  |
| 85       |      |      | 256176-3 | PIN 2.5                     | 1   | PC.  |
| 86       |      |      | 256176-3 | PIN 2.5                     | 1   | PC.  |
| 87       |      |      | 345706-6 | GUIDE PLATE                 | 1   | PC.  |
| 88       |      |      | 231692-6 | TORSION SPRING 4            | 1   | PC.  |
| 89       |      |      | 168489-9 | CAM BLOCK                   | 1   | PC.  |
| 90       |      |      | 233188-3 | COMPRESSION SPRING 2.4      | 1   | PC.  |
| 91       |      |      | 951001-0 | SPRING PIN 2-8              | 1   | PC.  |
| 92       |      |      | 324923-1 | PUSH PIN                    | 1   | PC.  |
| 93       |      |      | 345708-2 | SWITCH ARM                  | 1   | PC.  |
| 94       |      |      | 256176-3 | PIN 2.5                     | 1   | PC.  |
| 96       |      |      | 896138-5 | NAME PLATE F/LXTP01         | 1   | PC.  |
| 97       |      |      | 911163-6 | PAN HEAD SCREW M4X35        | 1   | PC.  |
| 98       |      |      | 266130-9 | TAPPING SCREW BIND PT 3X16  | 8   | PC.  |
| 99       |      |      | 911123-8 | PAN HEAD SCREW M4X14        | 2   | PC.  |
| 100      |      |      | 233459-8 | COMPRESSION SPRING 3        | 1   | PC.  |
| 101      |      |      | 951054-9 | SPRING PIN 3-10             | 1   | PC.  |
| 102      |      |      | 893795-0 | LXTP01 PLASTIC CASE LABEL   | 1   | PC.  |
| C01      |      |      | 872390-9 | CARTON F/ LXTP01Z           | 1   | PC.  |
| D01      |      |      | 654069-2 | RECEPTACLE                  | 1   | PC.  |
| D02      |      |      | 654079-9 | INSULATED RECEPTACLE DF1.25 | 2   | PC.  |
| D03      |      |      | 654108-8 | RECEPTACLE STO-41T-187N     | 1   | PC.  |

#### ACCESSORIES

|     |  |  |          |               |   |     |
|-----|--|--|----------|---------------|---|-----|
| A01 |  |  | 195246-2 | SAFETY GOGGLE | 1 | PC. |
| A02 |  |  | 419525-7 | NOSE ADAPTER  | 1 | PC. |
| A03 |  |  | 783201-2 | HEX. WRENCH 3 | 1 | PC. |

| Item No. | Type | Sub  | Part No.  | Description                        | Qty | Unit |
|----------|------|------|-----------|------------------------------------|-----|------|
| A04      | 1    |      | 141134-1  | PLASTIC CARRYING CASE COMPLETE     | 1   | PC.  |
|          |      | INC. | 324667-3  | SHAFT                              | 1   | PC.  |
|          |      | INC. | 413098-2  | PLATE                              | 4   | PC.  |
|          |      | INC. | 417724-5  | LATCH                              | 2   | PC.  |
|          |      | INC. | 419215-2A | PLASTIC CASE LID, TAP TYPE         | 1   | PC.  |
|          |      | INC. | 419216-0  | HANDLE                             | 1   | PC.  |
|          | 2    |      | 141932-3  | PLASTIC CASE COMPLETE              | 1   | PC.  |
|          |      | INC. | 324667-3  | SHAFT                              | 1   | PC.  |
|          |      | INC. | 413098-2  | PLATE                              | 4   | PC.  |
|          |      | INC. | 417724-5  | LATCH                              | 2   | PC.  |
|          |      | INC. | 419215-2A | PLASTIC CASE LID, TAP TYPE         | 1   | PC.  |
|          |      | INC. | 419216-0  | HANDLE                             | 1   | PC.  |
| A06      | 1    |      | DC18RA    | CHARGER DC18RA                     | 1   | PC.  |
|          | 2    |      | DC18RC    | CHARGER DC18RC                     | 1   | PC.  |
|          |      |      | DC18SD    | CHARGER DC18SD                     | 1   | PC.  |
|          |      |      | DC18SE    | AUTOMOTIVE CHARGER DC18SE          | 1   | PC.  |
|          |      |      | DC24SC    | CHARGER DC24SC                     | 1   | PC.  |
|          |      |      | DC18RAKIT | CHARGER+BATTERY(DC18RA+BL1830) KIT | 1   | KIT  |
| A07      |      |      | 194205-3  | 18V LI-ION BATTERY BL1830          | 1   | PC.  |
|          |      |      | 194230-4  | 18V LI-ION BATTERY BL1830(2/PK)    | 2   | PK   |
|          |      |      | 194288-3  | 18V LI-ION BATTERY BL1830(10/PK)   | 10  | PK   |
|          |      |      | 194309-1  | 18V LI-ION BATTERY BL1815          | 1   | PC.  |
|          |      |      | 194428-3  | 18V LI-ION BATTERY BL1815, 2/PK    | 2   | PK   |
|          |      |      | 194604-9  | 18V LI-ION BATTERY BL1815, 10/PK   | 10  | PK   |
| A08      |      |      | 450128-8  | BATTERY COVER (F/BL1830)           | 1   | PC.  |
| A09      | 1    |      | 324705-1  | TOOL HOOK F/BL1830                 | 1   | PC.  |
|          | 2    |      | 346449-3  | TOOL HOOK F/BL1830, BL1815         | 1   | PC.  |
|          | 1    |      | 346034-2  | TOOL HOOK F/BL1815                 | 1   | PC.  |
|          | 2    |      | 346449-3  | TOOL HOOK F/BL1830, BL1815         | 1   | PC.  |
| A10      | 1    |      | 346317-0  | TOOL HOOK F/BL1830                 | 1   | PC.  |
|          | 2    |      | 346449-3  | TOOL HOOK F/BL1830, BL1815         | 1   | PC.  |
| A11      |      |      | 194649-7  | BATTERY PROTECTOR                  | 1   | PC.  |
|          |      | INC. | 251314-2  | + SCREW M4X12                      | 2   | PC.  |