

Service Manual

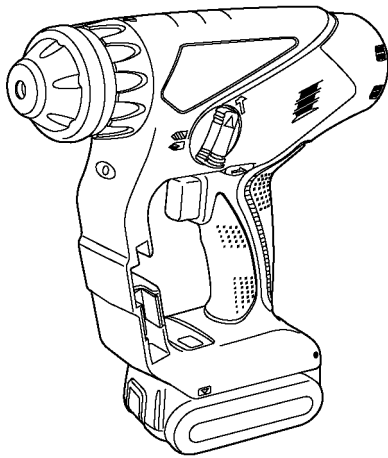
Cordless Rotary Hammer Drill & Driver

Model No. **LRH-144**

Sub Model No.
EY7840

GREENLEE brand
North America

Simplified



Please file and use this manual together with the service manual for Model No. EY7840, Order No. PTD0803U30CE.

WARNING

This service information is designed for experienced repair technicians only and is not designed for use by the general public. It does not contain warnings or cautions to advise non-technical individuals of potential dangers in attempting to service a product. Products powered by electricity should be serviced or repaired only by experienced professional technicians. Any attempt to service or repair the product or products dealt with in this service information by anyone else could result in serious injury or death.

IMPORTANT SAFETY NOTICE

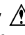
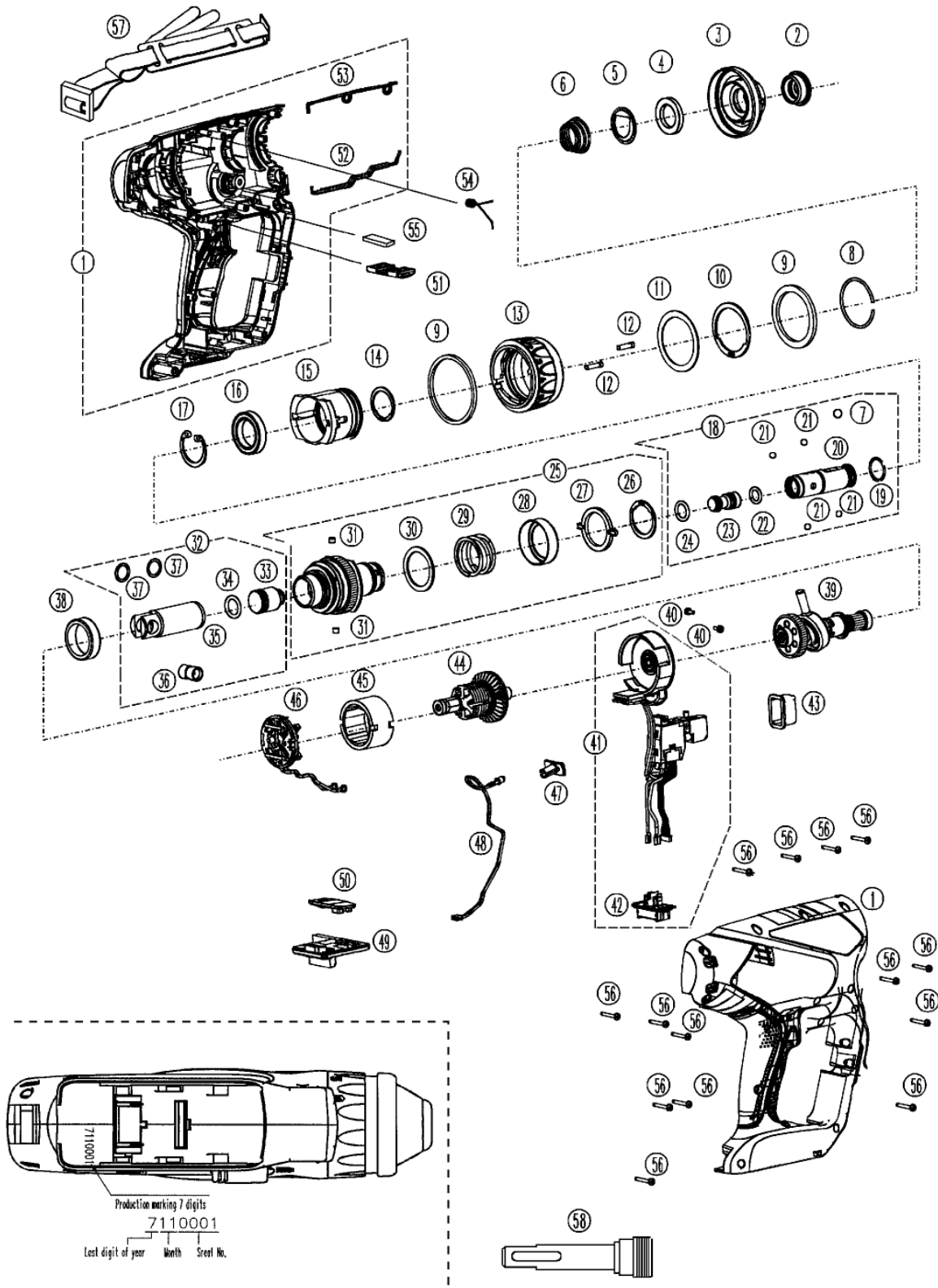
There are special components used in this equipment which are important for safety. These parts are marked by  in the Schematic Diagrams, Circuit Board Diagrams, Exploded Views and Replacement Parts List. It is essential that these critical parts should be replaced with manufacturer's specified parts to prevent shock, fire or other hazards. Do not modify the original design without permission of manufacturer.

TABLE OF CONTENTS

	PAGE	PAGE
1 Exploded View and Replacement Parts List -----	2	

1 Exploded View and Replacement Parts List

Model No. : LRH-144 Exploded View



Model No. : LRH-144 Parts List

Safety	Ref. No.	Part No.	Part Name & Description	Q'ty	Remarks
	1	WEZ7840G0010	HOUSING AB SET	1	
	2	WEY6813H3116	CHUCK COVER	1	
	3	WEY6803K3127	CHUCK HANDLE	1	
	4	WEY6813L0426	BALL GUIDE	1	
	5	WEY6813L0436	CHUCK SPRING STRIKE PLATE	1	
	6	WEY6813L0916	CHUCK SPRING	1	
	7	WEY6813L1916	STEEL BALL	1	(φ7)
	8	WEY6803L1167	C-TYPE RING	1	
	9	WEY6803L3137	FELT	1	
	10	WEY6803L0467	SNAP RING	1	(ISTW-42)
	11	WEY6803L0857	THRUST PLATE	1	
	12	WEY6803L1707	LOCK PIN	2	(2PCS/PK)
	13	WEY7840H3227	CLUTCH HANDLE	1	
	14	WEY6813L0477	SNAP RING	1	(ISTW-25)
	15	WEY6803Y3297	CLUTCH CASE	1	
	16	WEY6813L4957	BALL BEARING	1	
	17	WEY6803L0477	SNAP RING	1	
	18	WEY6803L4067	SPINDLE ASSEMBLY	1	
	19	WEY6813L0317	O RING	1	
	20	WEY6803L0057	SPINDLE	1	
	21	WEY6813L1926	STEEL BALL	4	(φ5), (4PCS/PK)
	22	WEY6813L0327	O RING	1	
	23	WEY6803L1237	STRIKER	1	
	24	WEY6813L0347	O RING	1	
	25	WEY7840L4907	CLUTCH ASSEMBLY	1	
	26	WEY6803L0257	SNAP RING	2	(ISTW28), (2PCS/PK)
	27	WEY6803L0087	CLICK PLATE	1	
	28	WEY6803L0017	ADJUST RING	1	
	29	WEY7840L0167	CLUTCH SPRING	1	
	30	WEY6803L0867	THRUST PLATE	1	
	31	WEY6813L0907	PIN	4	(φ5×4), (4PCS/PK)
	32	WEY7840L1247	PISTON ASSEMBLY	1	
	33	WEY6803L4627	HAMMER	1	
	34	WEY6803L0977	O RING	1	
	35	WEY6803L1987	PISTON	1	
	36	WEY7840L1257	UNIVERSAL COUPLING	1	
	37	WEY6812L0846	THRUST PLATE	2	(2PCS/PK)
	38	WEY6803L0387	NEEDLE BEARING	1	
	39	WEY6803L4057	INTERMEDIATE SHAFT ASSEMBLY	1	
	40	WEY6261B6026	SCREW	2	(K3-6)
	41	WEY7840L2007	SWITCH ASSEMBLY	1	
	42	WEY7880L2157	BATTERY TERMINAL BASE	1	
	43	WEY7840K3137	TRIGGER COVER	1	

Model No. : LRH-144 Parts List

Safety	Ref. No.	Part No.	Part Name & Description	Q'ty	Remarks
	44	WEY7840L1467	MOTOR ROTOR ASSEMBLY	1	
	45	WEY7840L1187	MOTOR STATOR ASSEMBLY	1	
	46	WEY7840L2307	MOTOR BRUSH ASSEMBLY	1	
	47	WEY6803L2337	LED COVER	1	
	48	WEY7840L2337	LED LIGHT	1	
	49	WEY7840L2117	MAIN PCB ASSEMBLY	1	
	50	WEY7840K3338	OPERATION PANEL	1	
	51	WEY7880L3147	F/R HANDLE	1	
	52	WEY6803L3987	SEAL B	1	
	53	WEY6803L3997	SEAL A	1	
	54	WEY6803L0927	PISTON APPLYING POWER SPRING	1	
	55	WEY6803L0137	CUSHION RUBBER	1	
	56	WEY6230K9216	TORX TAPPING SCREW	14	(K3-20)
	57	WEY7880L3417	SHOULDER STRAP	1	
	58	WEY9HX403	BIT ADAPTOR	1	
	-	WEZ7840G0020	TOOL CASE	1	