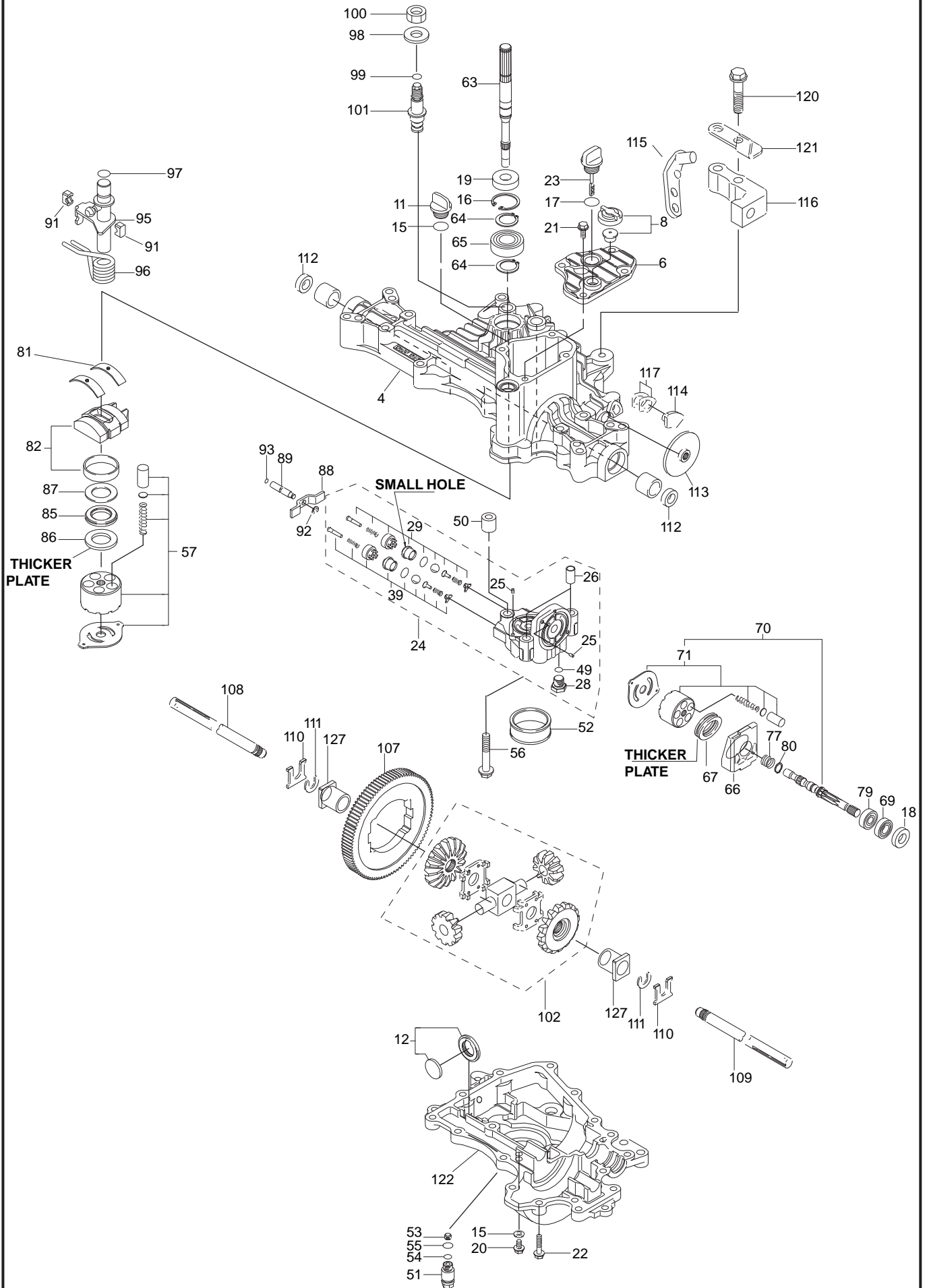


K55

Spare parts
Ersatzteile
Pièces détachées
Reserve onderdelen
Repuestos
Reservdelar



B	Pos	Husqvarna no.	Description
	1	506 95 36-01	K55 HSQ
	4	535 41 47-79	UPPER CASE KIT
	6	535 41 47-39	TOP COVER
	8	535 41 47-40	VENT VALVE 15
	11	535 41 47-41	OIL CAP 20
	12	535 41 46-94	MAGNET
	15	535 40 28-22	PACKING P18
	16	535 40 28-50	RING
	18	535 41 47-42	SEAL
	19	506 95 72-01	SEAL
	20	535 41 47-43	BOLT
	21	535 41 49-45	BOLT 8 * 20
	22	535 40 28-28	TAPPING SCREW
	23	535 41 49-47	CAP 20*49
	24	535 41 47-45	CENTER CASE KIT
	25	535 41 47-46	KNOCK PIN 3.5
	26	535 41 47-47	KNOCK PIN 12*22
	28	535 41 47-48	PLUG PF 1/2
	29	535 41 47-49	VALVE (A-1 KIT
	38	506 95 75-01	SEAL
	39	535 41 47-51	VALVE (A-2 KIT
	49	535 41 47-52	O-RING
	50	535 41 47-53	COLLAR 10*20*20
	51	535 41 47-54	CONNECTOR
	52	535 40 28-59	FILTER
	53	535 41 47-55	PLUG
	55	535 40 28-14	O-RING
	56	535 41 47-56	BOLT
	57	535 41 47-57	CYLINDER BLOCK
	63	535 41 47-58	PUMP SHAFT
	64	535 40 28-81	SNAP RING S15
	65	535 40 28-71	BEARING
	66	535 41 47-59	HOUSING
	67	535 40 28-73	BEARING 51106
	69	535 41 47-61	BALL BEARING
	70	535 41 47-63	MOTOR SHAFT KIT
	71	535 41 47-81	CYLINDER BLOCKKIT
	79	535 41 47-62	BALL BEARING
	81	535 41 47-64	THRUST METAL
	82	535 40 28-85	SWASH PLATE
	85	535 40 28-88	BEARING K81105
	86	535 40 28-89	THRUST PLATE (A
	87	535 40 28-90	THRUST PLATE (B
	88	535 41 47-65	C ARM BYPASS
	89	535 41 47-66	PUSH PIN
	91	535 41 47-67	SHIFT BLOCK KIT
	92	535 41 47-68	SNAP RING E5
	93	535 41 47-69	O-RING
	95	535 41 47-82	CONTROL SHAFT
	96	535 41 47-70	SP(TORSION 630
	97	535 41 46-19	O-RING
	98	535 40 28-13	WASHER
	99	535 40 28-15	O-RING
	100	506 95 66-01	LOCK NUT
	101	535 41 47-71	FULCRUM 10
	102	535 41 47-72	DIFFERENTIAL GEAR KIT
	107	535 41 47-74	FINAL GEAR 97
	108	535 41 47-75	AXLE SHAFT L
	109	535 41 47-76	AXLE SHAFT R
	110	535 41 47-12	THRUST WASHER
	111	535 41 47-77	RING 16
	112	535 40 28-37	SEAL 19*32*8
	113	531 00 65-01	BRAKE DISK
	114	531 00 65-02	BRAKE SHOE
	115	531 00 65-03	BRAKE LEVER
	116	531 00 65-04	LEVER STAY
	117	531 00 65-05	SHIM KIT
	120	531 00 65-06	BOLT 10*45
	122	535 41 47-83	LOWER CASE
	127	535 41 47-78	BUSHING 19*25