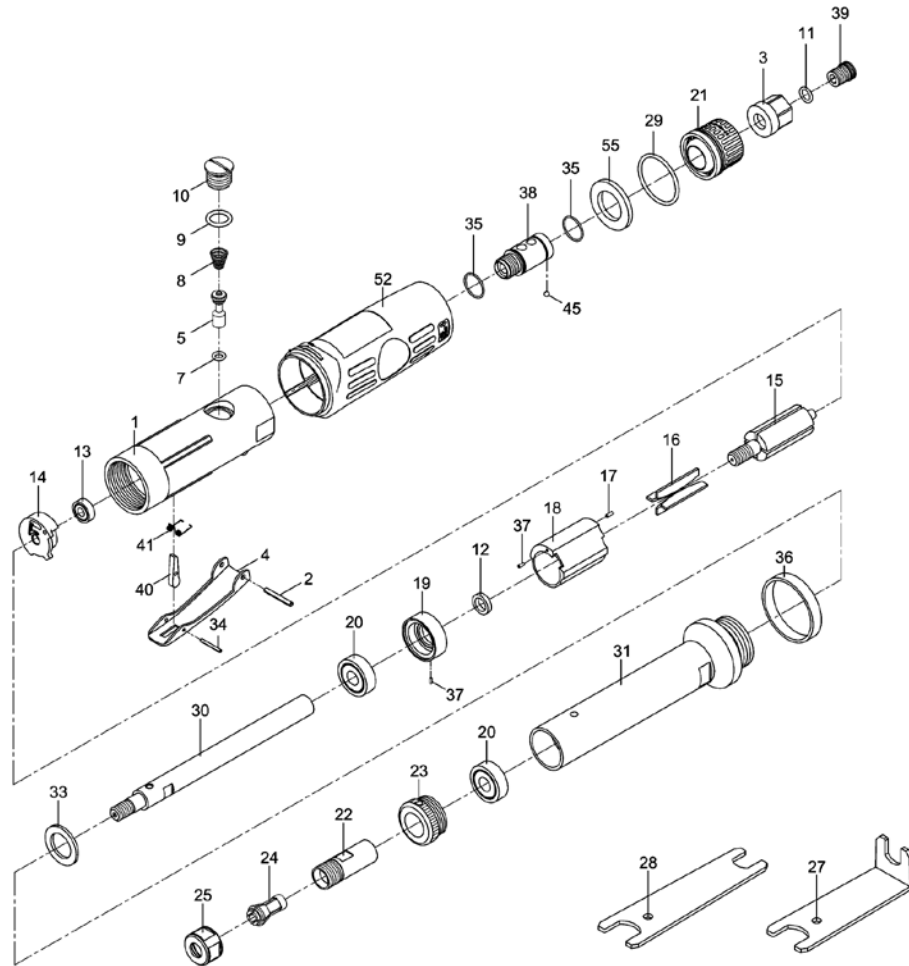




JSM-5130L

1/4" Extended Die Grinder

Stock No. JSM-5130L



Index Part No	Description	Qty
1	JSM5130-01 .. Motor Housing	1
2	SM-30102..... Spring Pin (3x24)	1
3	JSM5130-03 .. Air Inlet.....	1
4	JSM5130-04 .. Throttle Lever.....	1
5	JSM5130-05 .. Valve Shaft.....	1
7	70107	1
8	51208	1
9	70123	1
10	JSM5130-10 .. Throttle Valve Plug	1
11	JSM5130-11 .. O-Ring (7.5x1.5)	1

Index Part No	Description	Qty
12	51212..... Rotor Bushing	1
13	BB-696ZZ Ball Bearing (696ZZ).....	1
14	JSM5130-14 ..Rear End Plate.....	1

Parts List continued on back

To order parts, call our service department at 800-274-6848 Monday through Friday (see our website for business hours, www.jettools.com). Having the Model Number and Serial Number will allow us to serve you quickly and accurately.

JET
 427 New Sanford Road
 LaVergne, Tennessee 37086
 Ph.: 800-274-6848
www.jettools.com

Part No. M-JSM-5130L
 Revision A3 06/2014
 Copyright © 2014 JET

Index Part No	Description	Qty	Index Part No	Description	Qty
15	JSM5130-15..Rotor	1	33	JSM5130-33..Washer	1
16	JSM5130-16..Rotor Blades	4	34	51542.....Spring Pin (2x18)	1
17	SM-30117.....Spring Pin (1.5x6)	1	35	JSM5130-35..O-Ring (14x1)	2
18	JSM5130-18..Cylinder	1	36	JSM5130L-36 Decorating Ring	1
19	JSM5130-19..Front End Plate	1	37	JSM4140-27..Spring Pin (1.5x4)	2
20	BB-6000ZZ....Ball Bearing (6000ZZ)	2	38	JSM5130-38..Fixed Shaft	1
21	JSM5130-21..Deflector	1	39	JSM5130-39..Screw	1
22	51222.....Spindle	1	40	JSM5130-40..Safety Bar	1
23	51223F.....Lock Nut	1	41	JSM5130-41..Spring	1
24	51224.....Collet (1/4")	1	45	SB-1/8.....Steel Ball (1/8")	1
25	51225.....Collet Nut	1	52	JSM5130-52..Rubber Grip	1
27	51227.....Angle Double Ended Spanner	1	55	JSM5130-55..Damping Material	1
28	51228.....Double Ended Spanner	1	 RPK-5130.....Repair Kit ¹	
29	JSM5130-29..O-Ring (28.5x2)	1	 RBK-5130.....Rebuild Kit ²	
30	51230F.....Extension Bar	1			
31	JSM5130L-31 Extension Housing	1			

¹ Contains Index No.'s 7, 8, 9, 11, 16, 29, 35

² Contains Index No.'s 18, 24, 25

Specifications

Stock number.....	JSM-5130L
Collet size (in.).....	1/4
Horsepower.....	1/2 HP
Free speed (RPM).....	20,000
Air pressure (PSI).....	90
Air consumption (CFM).....	4
Air inlet (in.).....	1/4 NPT
Air hose inside diameter (in.).....	3/8
Vibration value (m/s ²).....	1.15
Overall length (in.).....	13.7
Noise level (dB).....	79
Weight (Shipping/net) (lb).....	3.5/2.4