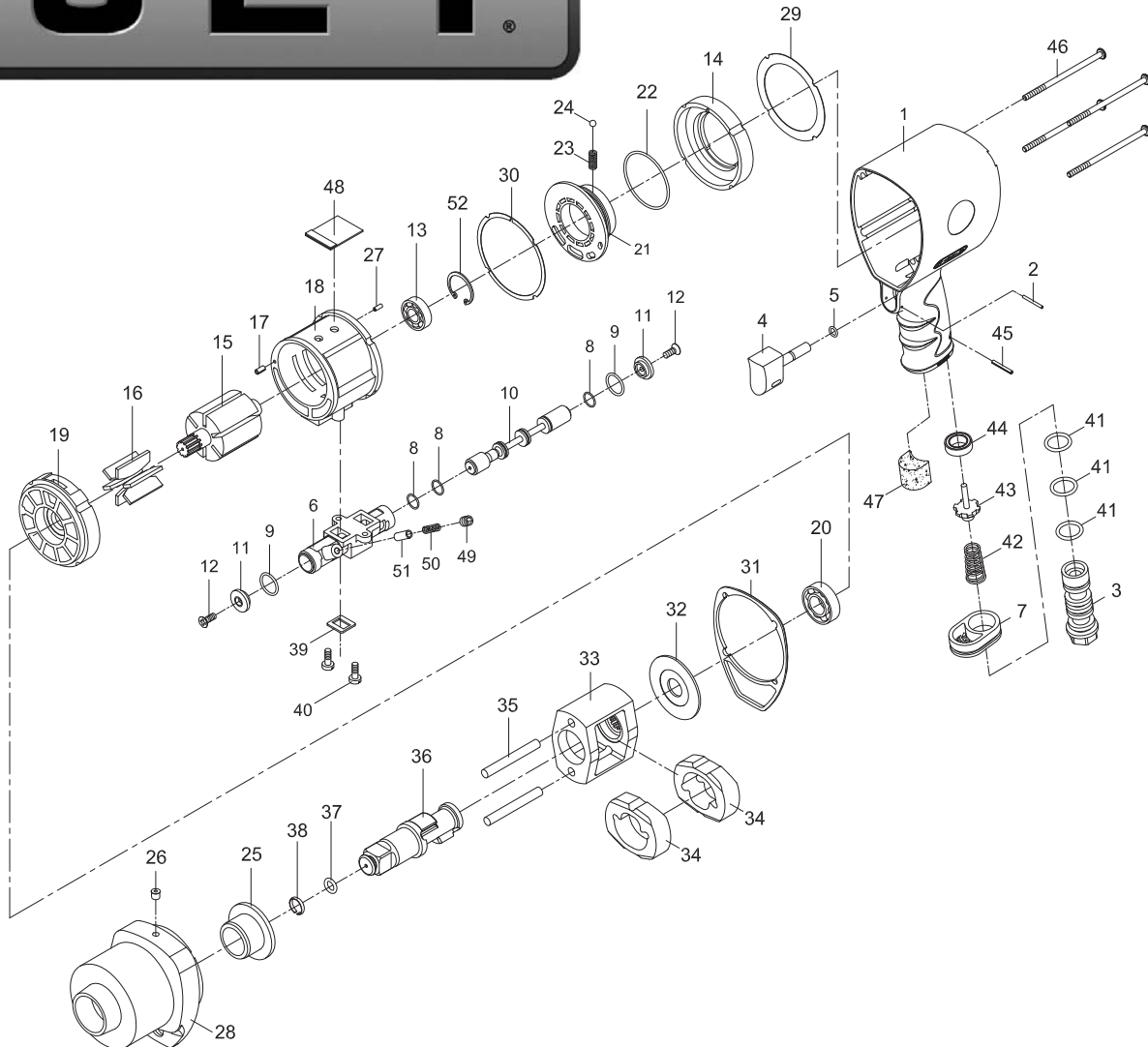




JSM-4540

3/4" Impact Wrench

Stock No. JSM-4540



| Index Part No | Description | Qty |
|--------------------|-------------------|-----|
| 1..... JSM4540-01 | Motor Housing | 1 |
| 2..... JSM4140-02 | Spring Pin (2x20) | 1 |
| 3..... JSM4540-03 | Air Inlet | 1 |
| 4..... JSM4540-04 | Trigger | 1 |
| 5..... JSM4140-05 | O-Ring (4x1) | 1 |
| 6..... JSM4540-06 | Reverse Valve | 1 |
| 7..... JSM4140-07 | Exhaust Diffuser | 1 |
| 8..... 52236 | O-Ring (10.5x1) | 3 |
| 9..... JSM7072-08 | O-Ring (15.5x1.5) | 2 |
| 10..... JSM4540-10 | Reverse Stem | 1 |
| 11..... JSM4540-11 | Button | 2 |

| Index Part No | Description | Qty |
|--------------------|---------------------|-----|
| 12..... JSM4140-12 | Screw (M3x8) | 2 |
| 13..... BB-6001 | Ball Bearing (6001) | 1 |
| 14..... JSM4540-14 | Fixed Ring | 1 |
| 15..... JSM4540-15 | Rotor | 1 |

Parts List continued on back page

To order parts, call our service department at 800-274-6848 Monday through Friday (see our website for business hours). Having the Model Number and Serial Number will allow us to serve you quickly and accurately.

JET
 427 New Sanford Road
 LaVergne, Tennessee 37086
 Ph.: 800-274-6848
 www.jettools.com

Part No. M-JSM-4540
 Revision B1 06/2014

Copyright © 2014 JET, a Division of JPW Industries, Inc.

| Index Part No | Description | Qty | Index Part No | Description | Qty |
|---------------|-------------------------------|-----|---------------|-----------------------------------|-----|
| 16 | JSM4540-16 Rotor Blade | 6 | 37 | JSM4540-37 O-Ring (10x3.5) | 1 |
| 17 | JSM4140-17 Spring Pin (2.5x5) | 1 | 38 | JSM4540-38 Retaining Ring | 1 |
| 18 | JSM4540-18 Cylinder | 1 | 39 | JSM4540-39 Gasket | 1 |
| 19 | JSM4540-19 Front End Plate | 1 | 40 | JSM4540-40 Screw | 2 |
| 20 | BB-6003Z Ball Bearing (6003Z) | 1 | 41 | JSM4343-41 O-Ring (15.54x2.62) | 3 |
| 21 | JSM4540-21A Air Regulator | 1 | 42 | JSM4340-08 Valve Spring | 1 |
| 22 | JSM4540-22A O-Ring (45.5x2) | 1 | 43 | JSM4340-09 Valve Stem | 1 |
| 23 | JSM4140-23A Spring | 1 | 44 | JSM4340-24 Rubber Spacer | 1 |
| 24 | SB-9/64 Steel Ball (9/64") | 1 | 45 | JSM4140-45 Spring Pin (2.5x20) | 1 |
| 25 | JSM4540-25 Anvil Bushing | 1 | 46 | JSM4540-46 Screw (M6x110) | 4 |
| 26 | JSM4340-26 Oil Cap (7/32") | 1 | 47 | JSM4540-47 Muffler Material | 1 |
| 27 | 70117 Spring Pin (2x5) | 1 | 48 | JSM4540-48 Muffler Material | 1 |
| 28 | JSM4540-28 Hammer Case | 1 | 49 | 40340 Set Screw (M5x5) | 1 |
| 29 | JSM4540-29 Gasket | 1 | 50 | JSM4540-50 Spring | 1 |
| 30 | JSM4540-30 Gasket | 1 | 51 | JSM4540-51 Pin | 1 |
| 31 | JSM4540-31 Gasket | 1 | 52 | 60328 Retaining Ring (RTW-28) | 1 |
| 32 | JSM4540-32 Washer | 1 | | | |
| 33 | JSM4540-33 Hammer Cage | 1 | | | |
| 34 | JSM4540-34 Hammer | 2 | | | |
| 35 | JSM4540-35 Hammer Pin | 2 | | | |
| 36 | JSM4540-36 Anvil (3/4") | 1 | | | |
| | | | | RPK-4540A Repair Kit ¹ | |
| | | | | RBK-4540 Rebuild Kit ² | |

¹ Contains Index No.'s 5, 8, 9, 16, 22, 24, 37, 38, 42

² Contains Index No.'s 29, 30, 31, 34, 35, 39

Specifications for JSM-4540:

| | |
|--------------------------|---------------------------------|
| Square drive | 3/4" |
| Bolt capacity | 1-1/2" |
| Anvil retainer type | Ring |
| Impact mechanism | twin hammer |
| Maximum working torque | 1200 ft/lbs |
| Torque settings | forward 3 steps/reverse 3 steps |
| Free speed | 5500 RPM |
| Air pressure | 90 psi |
| Air consumption at load | 4 CFM |
| Air inlet | 1/4" NPT |
| Air hose inside diameter | 3/8" |
| Vibration value | 3.9 m/s ² |
| Noise level | 83 dB |
| Number of vanes in motor | 6 |
| Overall length | 6" |
| Net weight | 7.50 lbs |
| Shipping weight | 7.72 lbs |