

Jig Saw - 3 601 E8F 010 - JS365

www.powertools-aftersaleservice.com

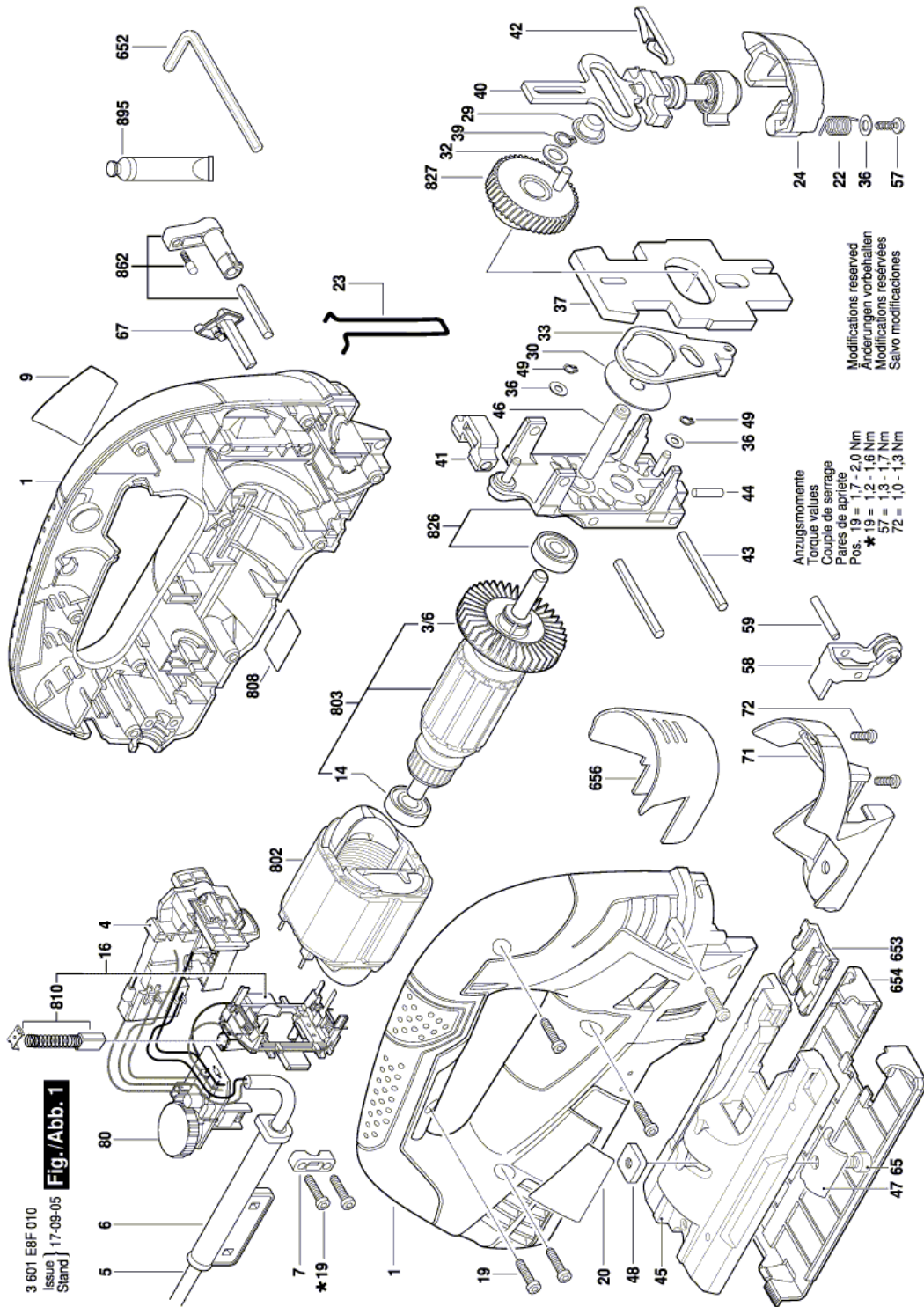


BOSCH

Item	Part Number	Description	Illustration	Price	Quantity	Price Group
1	1 619 P07 126	Housing Section DARK BLUE	1	-,-	1	31
3/6	2 606 610 123	Fan	1	-,-	1	13
4	2 607 200 670	Switch	1	-,-	1	28
5	1 619 P07 350	Power supply cord USA/CAN/SMA 2,70m 2 x 0,82mm SJ 18/2	1	-,-	1	23
6	2 600 703 028	Grommet Ø7,6-Ø8,2x95 MM	1	-,-	1	11
7	2 601 035 001	Cable Clip	1	-,-	1	11
9	1 619 P07 134	Manufacturer's nameplate	1	-,-	1	13
14	2 600 905 110	groove ball bearing 8x22x7	1	-,-	1	19
16	2 604 337 113	Brush Plate	1	-,-	1	25
19	2 603 490 022	Screw 4x16	1	-,-	11	10
20	1 619 P07 136	Warning Label	1	-,-	1	13
22	1 619 P07 152	Torsion Spring	1	-,-	1	10
23	1 619 P07 128	Protecting Cover	1	-,-	1	11
24	1 619 P07 151	Lever Switch	1	-,-	1	14
29	2 600 914 022	Needle bearing	1	-,-	1	19
30	1 619 P07 576	Shim	1	-,-	1	12
32	2 600 101 077	Shim 0,5 MM	1	-,-	1	11
33	1 619 P07 137	Fork Lever	1	-,-	1	16
36	2 600 100 588	Shim 0,5 MM	1	-,-	3	11
37	1 619 P07 133	Counterweight	1	-,-	1	24
39	2 916 640 905	Spring retaining ring 8x0,8 N31A MR7	1	-,-	1	11
40	1 619 P07 147	Lifting Rod	1	-,-	1	39
41	1 619 P08 903	Plain bearing	1	-,-	1	12
42	1 619 P11 327	Coiled Spring	1	-,-	1	10
43	1 619 P07 139	Needle Roller	1	-,-	1	12
44	1 619 P07 143	Bearing bolt	1	-,-	1	10
45	1 619 P09 068	Base Plate	1	-,-	1	28
46	1 619 P07 138	Bearing bolt	1	-,-	1	13
47	2 601 030 019	Profile Beading	1	-,-	1	13
48	1 619 P07 163	fixing plate	1	-,-	1	10
49	2 916 640 001	Spring retaining ring DIN 471-4x0,4-FSt	1	-,-	2	10
57	1 619 P02 848	Torx Oval-Head Screw 4x12	1	-,-	1	11
58	1 619 P07 129	Roller Lever	1	-,-	1	24

Item	Part Number	Description	Illustration	Price	Quantity	Price Group
59	1 619 P07 159	Bearing bolt	1	-,-	1	10
65	1 619 X04 887	Hex Socket Head Cap Screw	1	-,-	1	12
67	1 619 P07 158	Switch Slide	1	-,-	1	14
71	1 619 P07 127	Cover	1	-,-	1	21
72	2 603 435 015	Recessed-Head Screw DIN 7981-ST3,5x9,5-F	1	-,-	2	11
80	1 619 P07 308	Speed governor	1	-,-	1	36
652	1 907 950 006	Offset Screwdriver DIN 911-SW5 BLACK	1	-,-	1	16
653	2 601 016 093	Splintering Protector	1	-,-	1	16
654	1 619 P07 958	Pad	1	-,-	1	15
802	1 619 P09 156	Field	1	-,-	1	29
803	1 619 P09 158	Armature	1	-,-	1	36
808	1 619 P07 141	Nameplate	1	-,-	1	13
810	2 604 321 944	Carbon-Brush Set	1	-,-	1	21
826	1 619 P08 888	Bearing Bracket	1	-,-	1	29
827	1 619 P08 889	Eccentric Cog Wheel	1	-,-	1	29
862	1 619 P08 890	Change-Over Switch	1	-,-	1	15
895	3 605 430 003	Grease Tube Albida	1	-,-	1	32

Illustration - Type E



Information subject to change without further notice.