

Cordless Screw Driver - 0 602 490 633 - IASR 9,6-1...

www.powertools-aftersaleservice.com



BOSCH

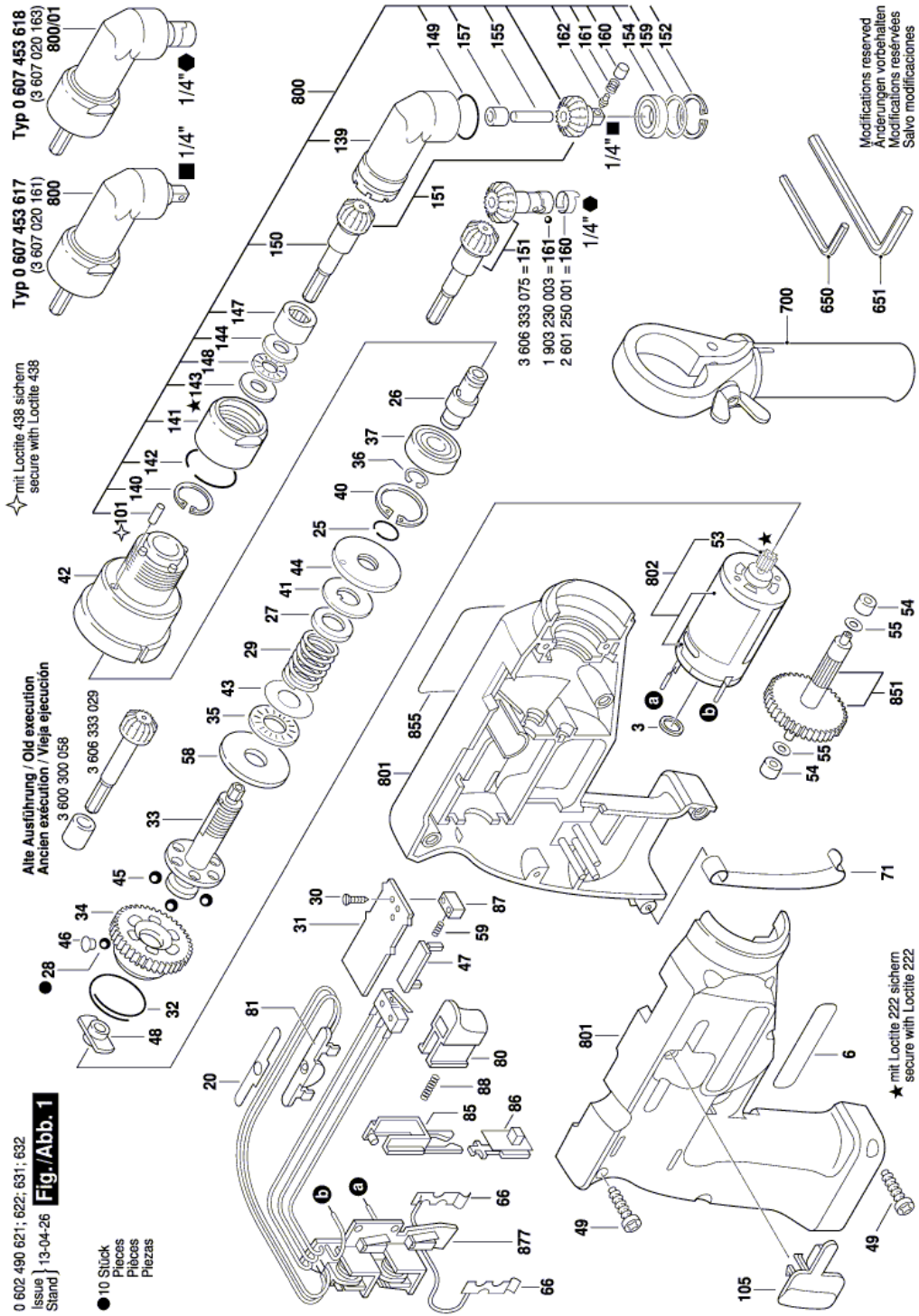
Item	Part Number	Description	Illustration	Price	Quantity	Price Group
3	3 600 200 043	Locating Ring	1	-,-	1	17
6	2 601 110 606	Sticker SHADOW SIDE	1	-,-	1	11
20	3 601 110 256	Sticker	1	-,-	1	19
25	2 916 600 006	Retaining ring 10 DIN 9045	1	-,-	1	10
26	3 607 218 009	Tool Holding Fixture	1	-,-	1	41
27	2 916 011 019	Plain Washer DIN 433-A13-ST 50	1	-,-	1	11
28	1 903 230 009	Ball DIN 5401-5 G28	1	-,-	10	10
29	3 604 611 023	Compression Spring	1	-,-	1	22
30	2 910 601 101	Tapping Screw DIN 7972-ST 2,2x6,5-C	1	-,-	2	10
31	3 601 023 007	Bearing Plate	1	-,-	1	15
32	3 604 601 001	Retaining ring	1	-,-	1	11
33	3 606 455 036	Coupling Half	1	-,-	1	45
34	3 606 455 039	Coupling Wheel	1	-,-	1	46
35	3 600 929 008	Roller Thrust Bearing	1	-,-	1	22
36	2 916 650 001	Spring retaining ring DIN 471-10x1MM-FSt	1	-,-	1	10
37	1 900 905 160	Deep-Groove Ball Bearing 6000-2 RSY DIN 625	1	-,-	1	32
40	2 916 660 010	Spring retaining ring DIN 472-26x1,2 MM	1	-,-	1	10
41	3 600 106 002	Catch Disk	1	-,-	1	14
42	3 605 700 119	Angle Flange	1	-,-	1	36
43	3 600 106 003	Support Disc	1	-,-	1	14
44	3 603 400 003	Round Nut	1	-,-	1	28
45	1 903 230 011	Ball DIN 5401-6 G28	1	-,-	3	10
46	3 601 023 008	Sealing plate	1	-,-	1	19
47	3 601 923 007	Actuating Element	1	-,-	1	14
48	3 600 917 038	Plain bearing	1	-,-	1	28
49	2 910 611 019	Tapping Screw DIN 7981-ST3,9x16-C-H	1	-,-	7	13
53	2 606 316 120	Pinion Z=14	1	-,-	1	20
54	3 600 917 037	Plain bearing	1	-,-	2	20
55	2 600 100 636	Shim 0,3 MM THICK	1	-,-	2	11
58	3 606 455 038	Coupling Plate	1	-,-	1	24
59	3 604 611 021	Compression Spring	1	-,-	1	14
66	2 601 324 012	Contact Spring	1	-,-	2	12
71	2 601 251 003	Holding Spring Ø8,7 MM	1	-,-	1	14

Item	Part Number	Description	Illustration	Price	Quantity	Price Group
80	3 608 750 036	Switch Slide	1	-,-	1	15
81	3 608 750 037	Led-Holder	1	-,-	1	15
85	3 602 329 026	Guide Piece	1	-,-	1	15
86	3 607 200 063	Switch	1	-,-	1	14
87	3 602 329 027	Spring Holder	1	-,-	1	14
88	3 604 611 031	Compression Spring	1	-,-	1	13
99	3 601 119 236	Reference Plate	N/A	-,-	1	15
101	2 917 530 057	Straight Pin DIN 6325-5M2,5x12	1	-,-	4	10
105	2 605 510 027	Filler Piece BLUE	1	-,-	1	11
139	3 605 106 071	Spindle Housing	1	-,-	1	48
140	2 916 660 004	Spring retaining ring 18x1MM, DIN 472	1	-,-	1	10
141	3 603 342 002	Union Nut	1	-,-	1	27
142	2 916 600 013	Retaining ring DIN 9045-24	1	-,-	1	11
143	3 600 100 094	Support Disc	1	-,-	1	28
144	3 600 100 095	Support Disc	1	-,-	1	28
147	3 600 917 019	Needle bearing	1	-,-	1	24
148	3 600 929 003	Roller Thrust Bearing	1	-,-	1	29
149	3 600 210 127	O-Ring 21,0x1,0 MM	1	-,-	1	10
150	3 606 333 077	Bevel Gear	1	-,-	1	46
151	3 606 334 071	Crown Gear Z=14	1	-,-	1	53
151	3 606 334 070	Crown Gear Z=14	1	-,-	1	53
152	2 916 660 045	Spring retaining ring DIN 472-21x1MM	1	-,-	1	10
154	3 600 900 018	Deep-Groove Ball Bearing	1	-,-	1	31
155	3 603 201 031	Needle Roller	1	-,-	1	12
157	9 001 140 359	Needle bearing	1	-,-	1	19
159	1 600 101 650	Shim 0,05 MM THICK	1	-,-	1	11
159	1 600 101 648	Shim 0,1 MM THICK	1	-,-	1	11
160	2 601 250 001	Leaf Spring	1	-,-	1	11
160	3 600 400 014	Guide Sleeve	1	-,-	1	21
161	1 903 230 003	Ball DIN 5401-2,5MM-III-ST	1	-,-	1	10
161	2 604 613 003	Compression Spring	1	-,-	1	11
162	3 603 124 015	Detent Pin	1	-,-	1	20
650	3 607 950 014	Screwdriver	1	-,-	1	11
651	3 607 950 001	Hexagon-Socket Key	1	-,-	1	14
700	2 602 025 032	Auxiliary Handle Ø43 MM BLACK	1	-,-	1	-
800	3 607 020 161	Angle Screwdriver Head 1/4"	1	-,-	1	66
800/01	3 607 020 163	Angle Screwdriver Head 1/4"	1	-,-	1	64
801	3 605 105 014	Housing Section BLUE	1	-,-	1	44
802	3 607 030 295	DC motor 9,6-12V	1	-,-	1	37
851	3 607 031 549	Spindle With Gear	1	-,-	1	33
855	3 601 119 235	Manufacturer's nameplate	1	-,-	1	15
877	3 608 300 178	Printed-Board Assembly	1	-,-	1	55

Product information Cordless Screw Driver - 0 602 490 633 - IASR 9,6-12V

Product No	0 602 490 633
Description	251.178; Cordless Screw Driver
DIN-Text	
ID_Text_Ext	0
Trading_Description	IASR 9,6-12V
Voltage_1	9,6 V
ID_Country_Product	USA

Illustration - Type E



Information subject to change without further notice.