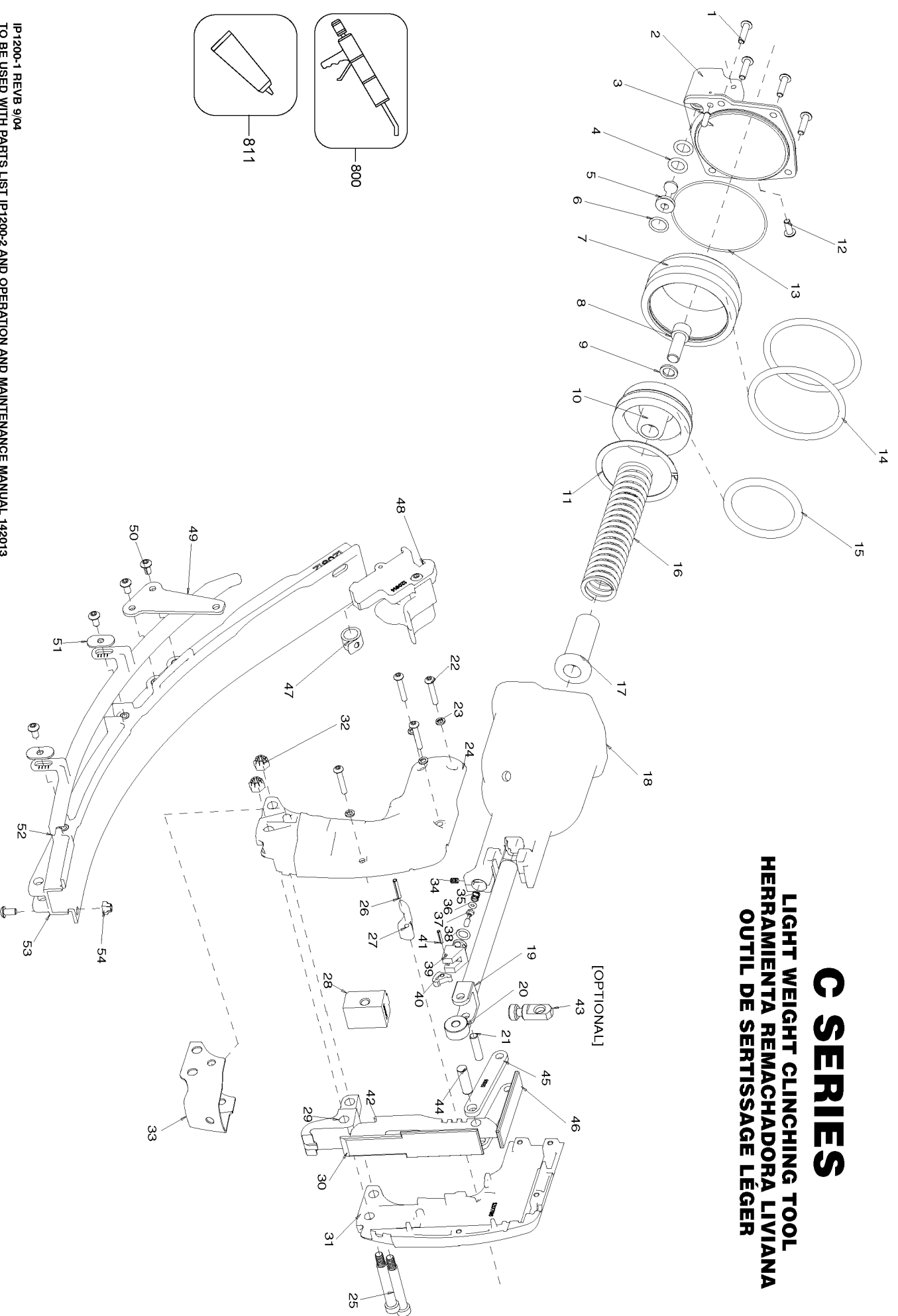


# C SERIES

LIGHT WEIGHT CLINCHING TOOL  
 HERRAMIENTA REMACHADORA LIVIANA  
 OUTIL DE SERTISSAGE LÉGER



## Parts List for HR-68C-100 Type 0

Item Number	Part Number	Description	Qty Required
1	TL710210	SOCKET HEAD CAP SCRE	4
2	120823	CAP AS MACHINE	1
3	SC01	ROLLER PIN	1
4	134470	O-RING- VITON-111	1
5	120820	PISTON- VALVE	1
6	134469	O-RING- BUNA-N-014	1
7	136059	PISTON- FLOATING	1
8	HR-15253	SHCS 3/8-16 X 1 W/ P	1
9	141910	SHIM- 3/8ID X 1/16 T	1
10	141763	PISTON	1
11	134507-S	RING- PETAINER 2.5 O	1
12	HR-16064	BHCS 10-24 X 1/2	1
13	HR-15017	O-RING 2 3/4 X 3 1/8	1
14	HR-15016	O-RING 2 7/8 X 3 X 1	1
15	851539	O-RING-2.039X.253	1
16	120819	SPRING- PISTON	1
17	120831	GUIDE- PISTON ROD	1
18	120815	HOUSING AS MACHINE	1
19	140334	ROD- PISTON	1
20	HR-55103	ROLLER	1
21	HR-55018	PISTON PIN - ROLLER	1
22	141907	BHCS- #8-32 X 1 LG	1
23	HR-15032	WASHER- LOCK #8	1
24	120785	SIDE PLATE 1	1
25	HR-15143	SHSS 5/16 X 1 3/4	1
26	SC05	PIN- ROLL	1
27	141648	TRIGGER- STRAIGHTEN	1

## Parts List for HR-68C-100 Type 0

Item Number	Part Number	Description	Qty Required
29	134447	ANVIL- MOD. 68C-100	1
30	120788	PLATE- FRONT WEAR	1
31	120786	SIDE PLATE 2	1
32	141935	NUT- HEAVY THICK NYL	1
33	141762	GUARD (SHROUD)	1
34	142012	SET SCREW- OVAL POIN	1
35	HR-55016	SPRING CL-CC	1
36	HR-15008	O-RING 1/8 X 1/4 X 1	1
37	HR-55015	VALVE STEM CL-CC	1
38	HR-15009	O-RING 5/16 X 7/16 X	1
39	HR-55014	PILOT VALVE BODY CL-	1
40	132410	LEVEL- VALVE	1
41	HR-15002	PIN- ROLL 3/32 x 1/2	1
42	HR-55391	BLADE M68	1
43	134521	HANGER- CL TOOL	1
44	HR-55009	PIN- DOWEL 5/16 X 1	1
45	HR-55008	LINK	1
46	120787	PLATE- TOP WEAR	1
47	134482	NEGATOR SPRING CL	1
48	137960	ASSEMBLY- MODIFIED F	1
49	120810	BRACKET- MAGAZINE	1
50	TL770106	BHCS #10-32 X 3/8 W/	1
51	134712	WASHER- RECTANGLE	1
52	120813	COVER- MAGAZINE	1
53	120812	MAGAZINE C SERIES	1
54	HR-15049	NUT- FLEXLOC 10-32	1
800	100653	LUBE (2CC)	1

## Parts List for HR-68C-100 Type 0

Item Number	Part Number	Description	Qty Required
800	100679	LUBE (1LB.CAN)	1
811	851385	LOCTITE	1
811	851325	LOCTITE	1