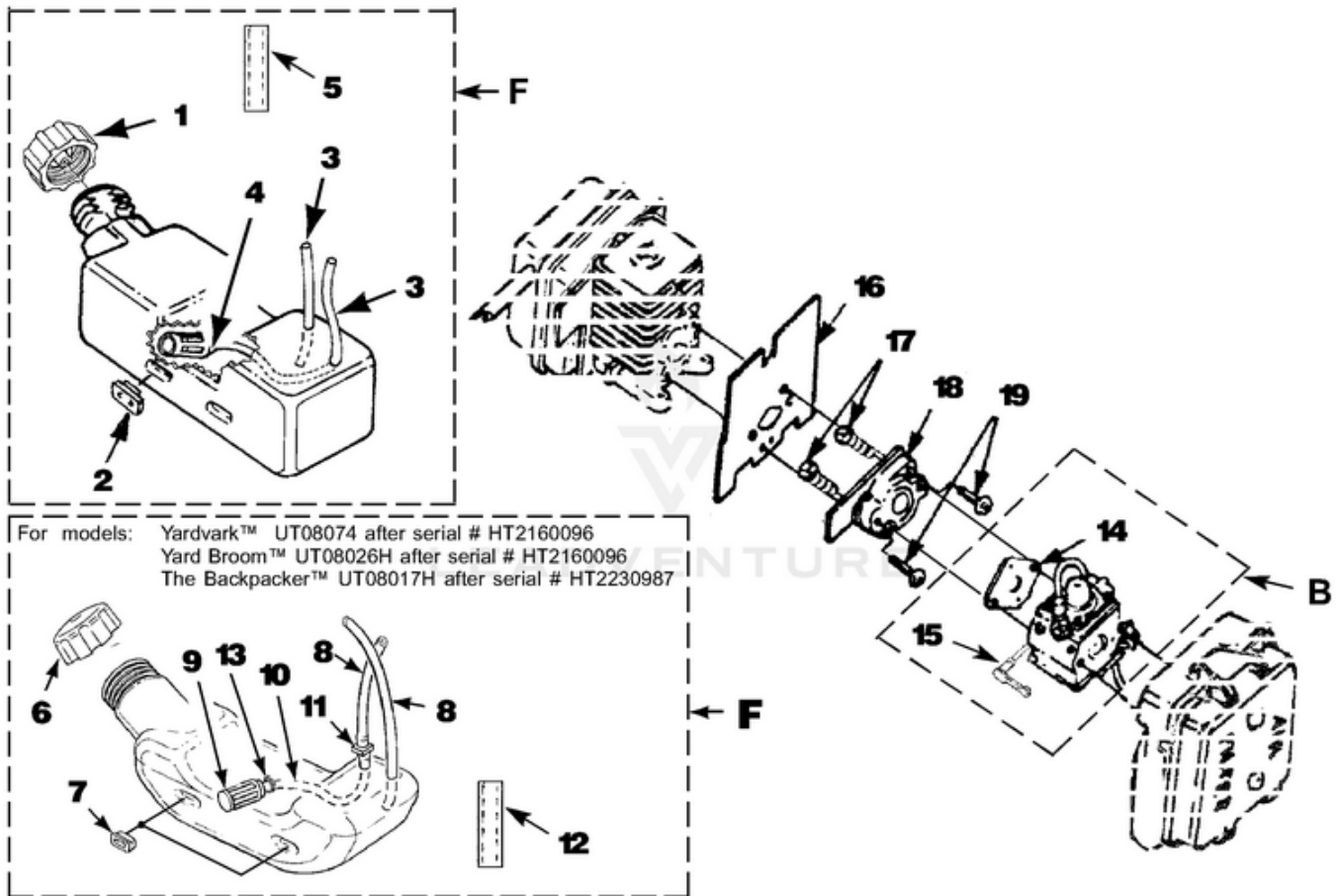
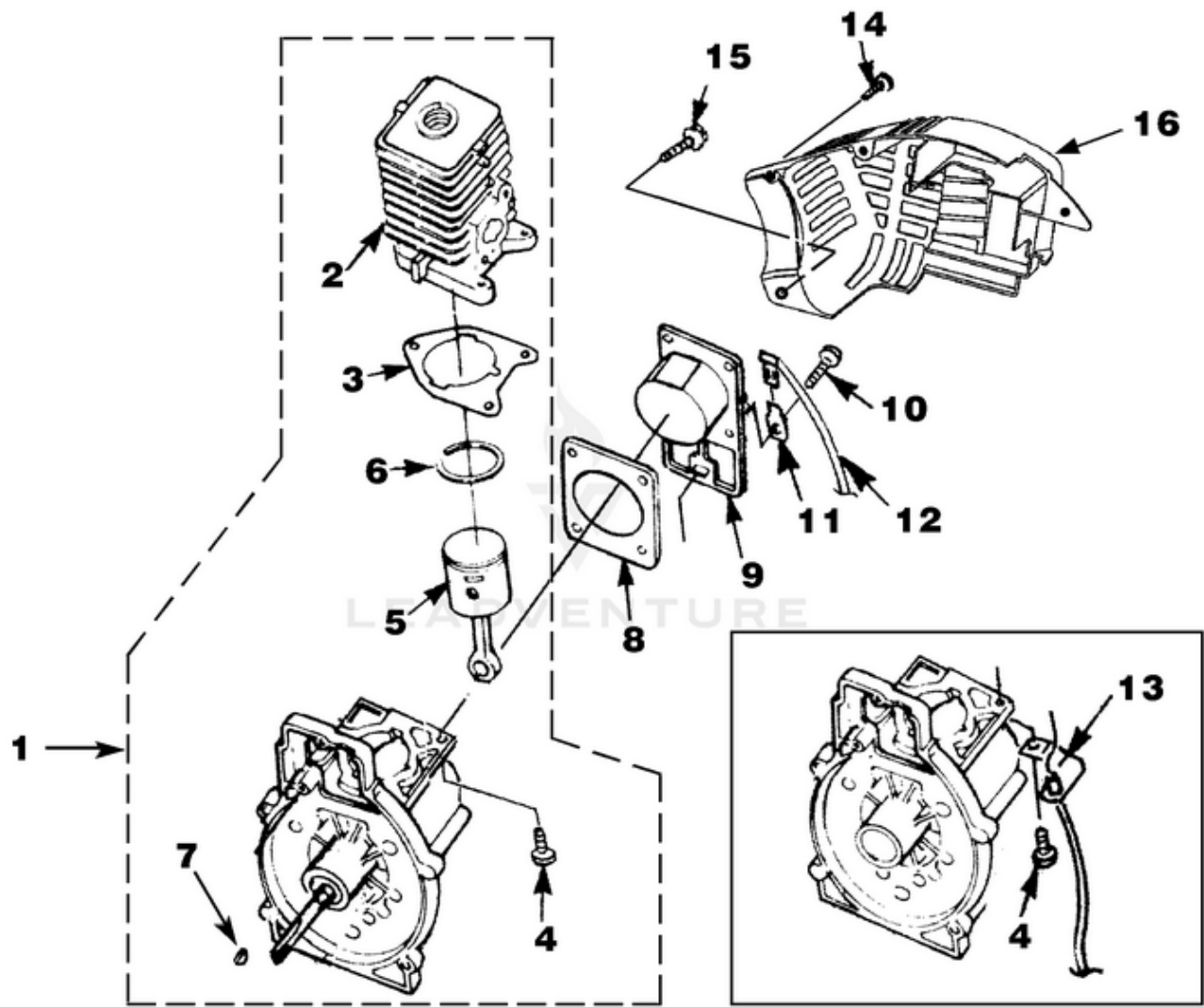


# HB180VI Blower UT-08016-G - Carburetor And Fuel Tank



| Ref # | Part #  | Description                                   | Qty | Context Note                                                                                                                      |
|-------|---------|-----------------------------------------------|-----|-----------------------------------------------------------------------------------------------------------------------------------|
| F     | UP00136 | FUEL TANK KIT                                 | 1   | Includes items 1-5                                                                                                                |
| 1     | UP04111 | FUEL CAP (1 3/8" Opening)                     | 1   |                                                                                                                                   |
| 2     | UP03501 | BUMPER-Rubber                                 | 3   |                                                                                                                                   |
| 3     | 7031032 | TUBING-Rubber (8")                            | 2   |                                                                                                                                   |
| 4     | UP03871 | FUEL FILTER                                   | 1   |                                                                                                                                   |
| 5     | 4283304 | INSULATION-Tubing                             | 1   | Includes items 6-13                                                                                                               |
| F     | UP00136 | FUEL TANK KIT                                 | 1   |                                                                                                                                   |
| 6     | UP00106 | FUEL CAP (1 5/8" Opening)                     | 1   |                                                                                                                                   |
| 7     | UP03501 | BUMPER-Rubber                                 | 3   |                                                                                                                                   |
| 8     | UP03825 | TUBING-Rubber (8")                            | 2   |                                                                                                                                   |
| 9     | UP03871 | FUEL FILTER                                   | 1   |                                                                                                                                   |
| 10    | UP03905 | TUBING-Rubber (8")                            | 1   |                                                                                                                                   |
| 11    | UP04310 | Fitting, Inlet (small for 2.5mm ID fuel line) | 1   |                                                                                                                                   |
|       | UP03831 | Fitting, Inlet (large for 3mm ID fuel line)   | 1   |                                                                                                                                   |
| 12    | UP04339 | INSULATION-Tubing                             | 1   |                                                                                                                                   |
| 13    | UP03913 | CLAMP                                         | 1   |                                                                                                                                   |
| B     | UP00651 | CARBURETOR KIT                                | 1   | Includes items 14-15<br>Also included with Short block & Cylinder Kits.<br>(Walbro WT419, WT469)                                  |
| 14    | UP03915 | GASKET-Carburetor                             | 1   |                                                                                                                                   |
| 15    | UP03943 | LEVER-Choke                                   | 1   | (Zama, H39)                                                                                                                       |
|       | UP04278 | LEVER-Choke                                   | 1   |                                                                                                                                   |
| B     | UP00652 | CARBURETOR KIT                                | 1   | (BP250's, Backpacker & BP30185); Includes items 14-15<br>Also included with Short block & Cylinder Kits.<br>(Walbro WT419, WT469) |
| 14    | UP03916 | (GASKET-Carburetor)                           | 1   |                                                                                                                                   |
| 15    | UP03943 | LEVER-Choke                                   | 1   | (Zama, H39)                                                                                                                       |
|       | UP04278 | LEVER-Choke                                   | 1   |                                                                                                                                   |
| B     | UP00653 | CARBURETOR KIT                                | 1   | (UT08026 E, F, G, H, J, UT08011 G, H, J); Includes items 14-15<br>Also included with Short block & Cylinder Kits.                 |
| 14    | UP03915 | GASKET-Carburetor                             | 1   |                                                                                                                                   |
| 15    | UP03941 | LEVER-Choke                                   | 1   | Also included with Short block & Cylinder Kits.                                                                                   |
| 16    | UP04308 | GASKET-Heat Dam                               | 1   |                                                                                                                                   |
| 17    | UP04131 | SCREW-Thread Form. (10-24 x 1")               | 2   | Torque Specs 30-40 In/Lbs, 3.4-4.5 Nm.                                                                                            |
| 18    | UP04348 | HEAT DAM                                      | 1   |                                                                                                                                   |
| 19    | UP04140 | SCREW, SEMS (10-24 x 1.110)                   | 2   | Torque Specs 40-50 In/Lbs, 4.5-5.6 Nm. Required Loctite 262 Red; Also included with Short block & Cylinder Kits.                  |

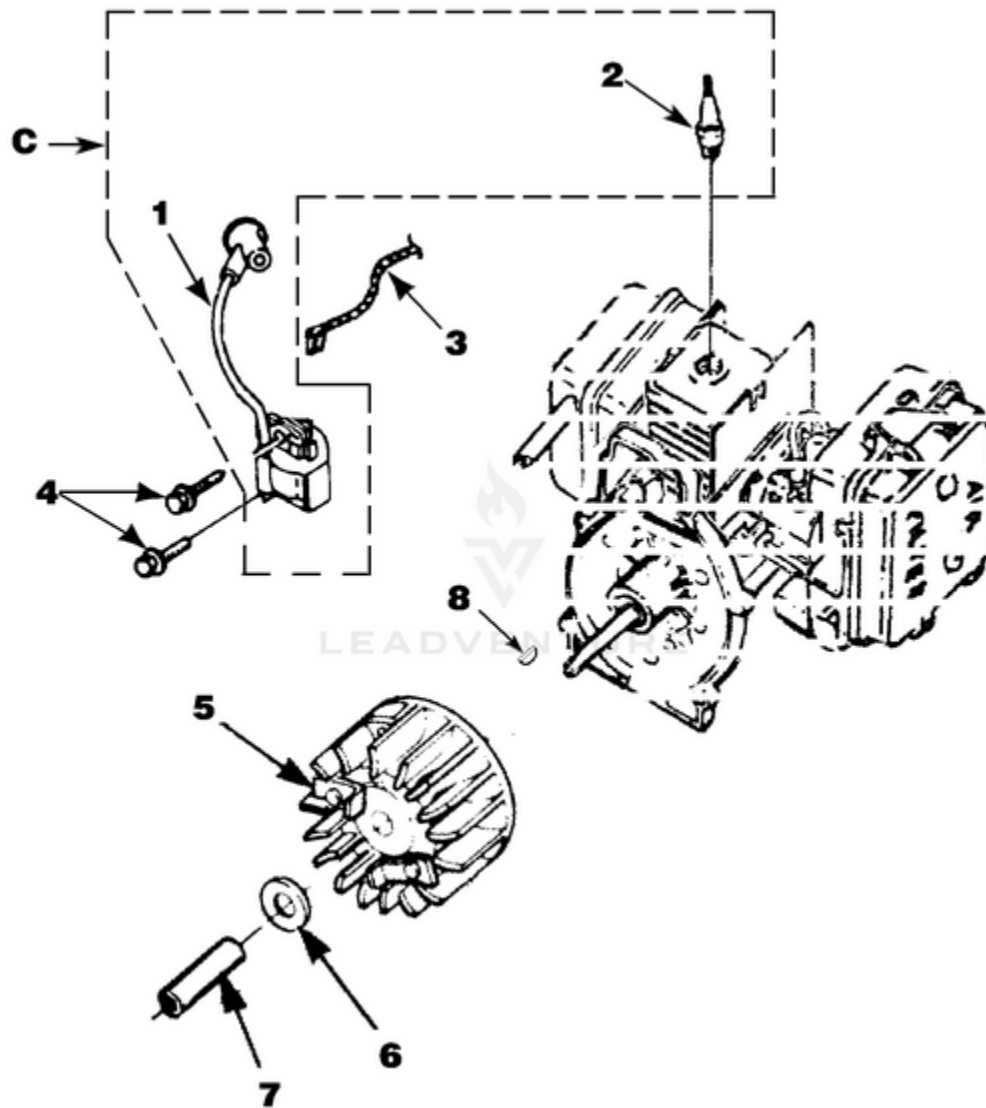
HB180VI Blower UT-08016-G - Engine Internal



Rendered by LeadVenture, Inc.

| Ref # | Part #  | Description                         | Qty | Context Note                                                                                                          |
|-------|---------|-------------------------------------|-----|-----------------------------------------------------------------------------------------------------------------------|
| 1     | UP03121 | SHORT BLOCK W/<br>Rotor (30cc)      | 1   | Includes items 2-7                                                                                                    |
| 2     | UP07146 | 30 CC CYLINDER KIT                  | 1   | Includes items 3-4                                                                                                    |
| 3     | UP03857 | GASKET-Cylinder                     | 1   | Also Included with Short Block & Cylinder Kits                                                                        |
| 4     | UP04345 | SCREW, SEMS (12-24<br>x 3/4)        | 3   | Torque Specs 55-65 In/Lbs, 6.2-7.3 Nm. Required<br>Loctite 262 Red                                                    |
| 5     | UP03366 | 30 CC PISTON & ROD                  | 1   | Includes item 6                                                                                                       |
| 6     | UP03837 | RING-Piston                         | 2   | Ring for single ring 30CC piston is 04933.                                                                            |
| 7     | UP03874 | KEY-Woodruff                        | 1   |                                                                                                                       |
|       | UP03817 | GASKET-Muffler                      | 1   | (Not Shown)                                                                                                           |
| 1     | UP03123 | SHORT BLOCK W/<br>Rotor (25cc)      | 1   | Includes items 2-7                                                                                                    |
| 2     | UP04136 | 25 CC CYLINDER KIT                  | 1   | Includes items 3-4                                                                                                    |
| 3     | UP03857 | GASKET-Cylinder                     | 1   |                                                                                                                       |
| 4     | UP04345 | SCREW, SEMS (12-24<br>x 3/4)        | 3   | Torque Specs 55-65 In/Lbs, 6.2-7.3 Nm. Required<br>Loctite 262 Red                                                    |
| 5     | UP00768 | 25 CC PISTON & ROD                  | 1   | Includes item 6                                                                                                       |
| 6     | UP03838 | RING-Piston                         | 1   |                                                                                                                       |
| 7     | UP03874 | KEY-Woodruff                        | 1   |                                                                                                                       |
|       | UP03817 | GASKET-Muffler                      | 1   | (Not Shown)                                                                                                           |
| 8     | UP04335 | GASKET-Crankcase                    | 1   | Torque Specs 55-65 In/Lbs, 6.2-7.3 Nm. Required<br>Loctite 262 Red; Also Included with Short Block &<br>Cylinder Kits |
| 9     | UP04336 | CRANKCASE<br>COVER-Stamped Steel    | 1   |                                                                                                                       |
| 10    | UP04295 | SCREW, SEMS (10-24<br>x .56)        | 4   | (Use with stamped steel c/case cover); Also Included<br>with Short Block & Cylinder Kits                              |
| 9     | UP03914 | CRANKCASE<br>COVER-Aluminum         | 1   |                                                                                                                       |
| 10    | UP04277 | SCREW, SEMS (10-24<br>x .810)       | 4   | (Use with aluminum c/case cover); Also Included<br>with Short Block & Cylinder Kits                                   |
| 11    | UP03834 | TAB-Male                            | 1   |                                                                                                                       |
| 12    | UP04302 | CABLE-Throttle w/<br>Ignition Leads | 1   | (BP250's, Backpacker & BP30185)                                                                                       |
| 13    | UP04296 | CABLE BRACKET                       | 1   | (BP250's, Backpacker & BP30185)                                                                                       |
| 14    | UP03893 | SCREW-Thread Form.<br>(#8 X 1/2")   | 3   | Torque Specs 8-12 In/Lbs, .9-1.4 Nm.                                                                                  |
| 15    | UP03900 | SCREW-Thread Form.<br>(#10 X 3/4")  | 6   | Torque Specs 20-30 In/Lbs, 2.3-3.4 Nm.                                                                                |
| 16    | UP06522 | SHROUD                              | 1   |                                                                                                                       |
|       | UP06779 | SHROUD-Flocked                      | 1   | (HB180-VI, HB390-VI)                                                                                                  |

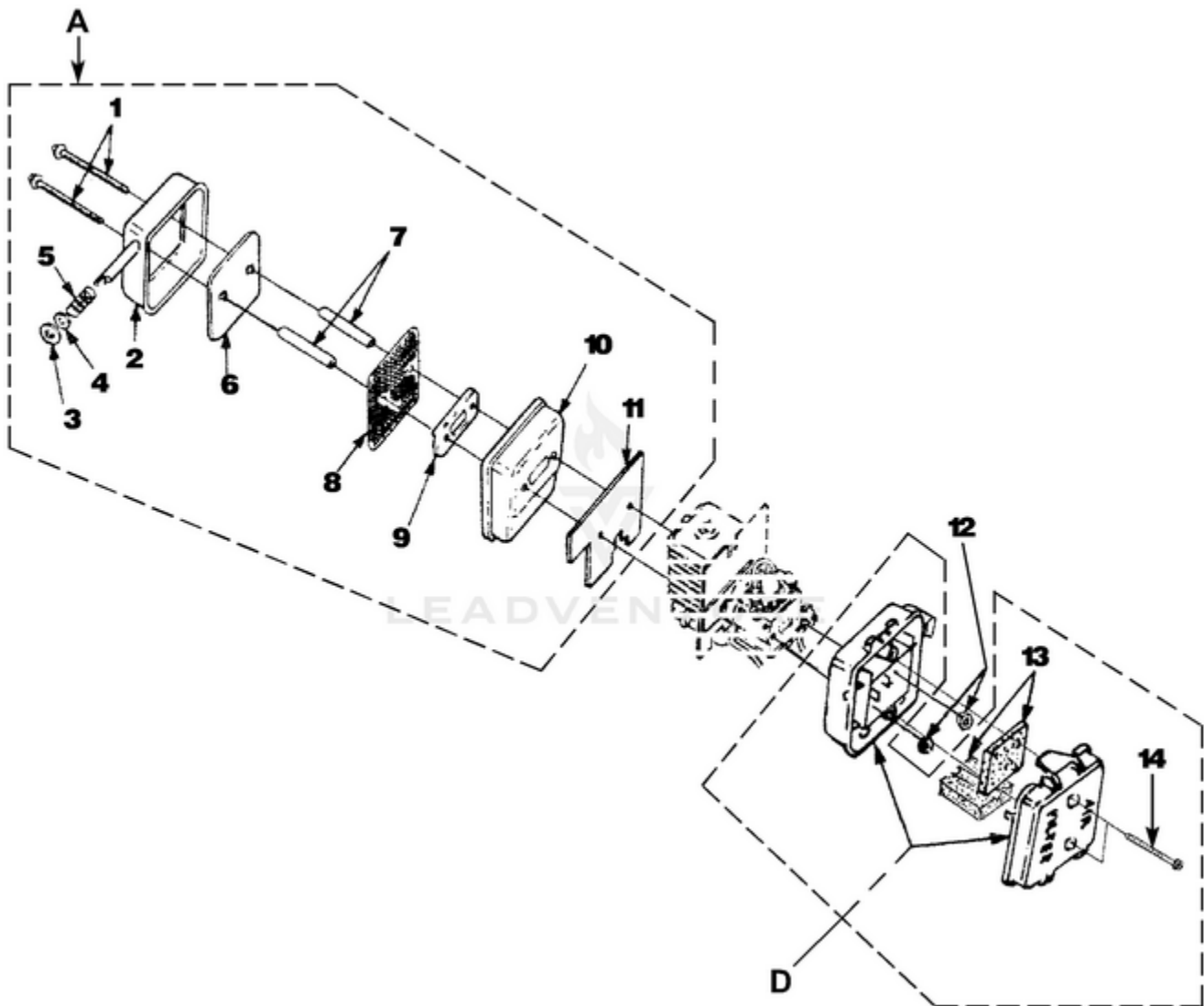
HB180VI Blower UT-08016-G - Ignition With Rotor



Rendered by LeadVenture, Inc.

| Ref # | Part #  | Description                       | Qty | Context Note                                                        |
|-------|---------|-----------------------------------|-----|---------------------------------------------------------------------|
| C     | UP03858 | IGNITION KIT w/<br>Module         | 1   | Includes items 1-2                                                  |
| 1     | UP03868 | TERMINAL-Hi-Tension               | 1   |                                                                     |
| 2     | UP03883 | SPARK PLUG (RDJ-7Y)               | 1   | Torque Specs 120-180 In/Lbs, 13.6-20.3 Nm.                          |
| 3     | A03924  | LEAD-Electrical                   | 1   | (BP250's, Backpacker & BP30185)                                     |
| 4     | UP03896 | SCREW-Thread Form.<br>(8-32 x 1") | 2   | Torque Specs 30-40 In/Lbs, 3.4-4.5 Nm.<br>Required Loctite 242 Blue |
| 5     | UP03009 | ROTOR & STARTER<br>PAWLS          | 1   |                                                                     |
| 6     | UP03906 | WASHER-Flat                       | 1   |                                                                     |
| 7     | UP03854 | SPACER-Fan                        | 1   |                                                                     |
| 8     | UP03874 | KEY-Woodruff                      | 1   |                                                                     |

# HB180VI Blower UT-08016-G - Muffler And Air Cleaner

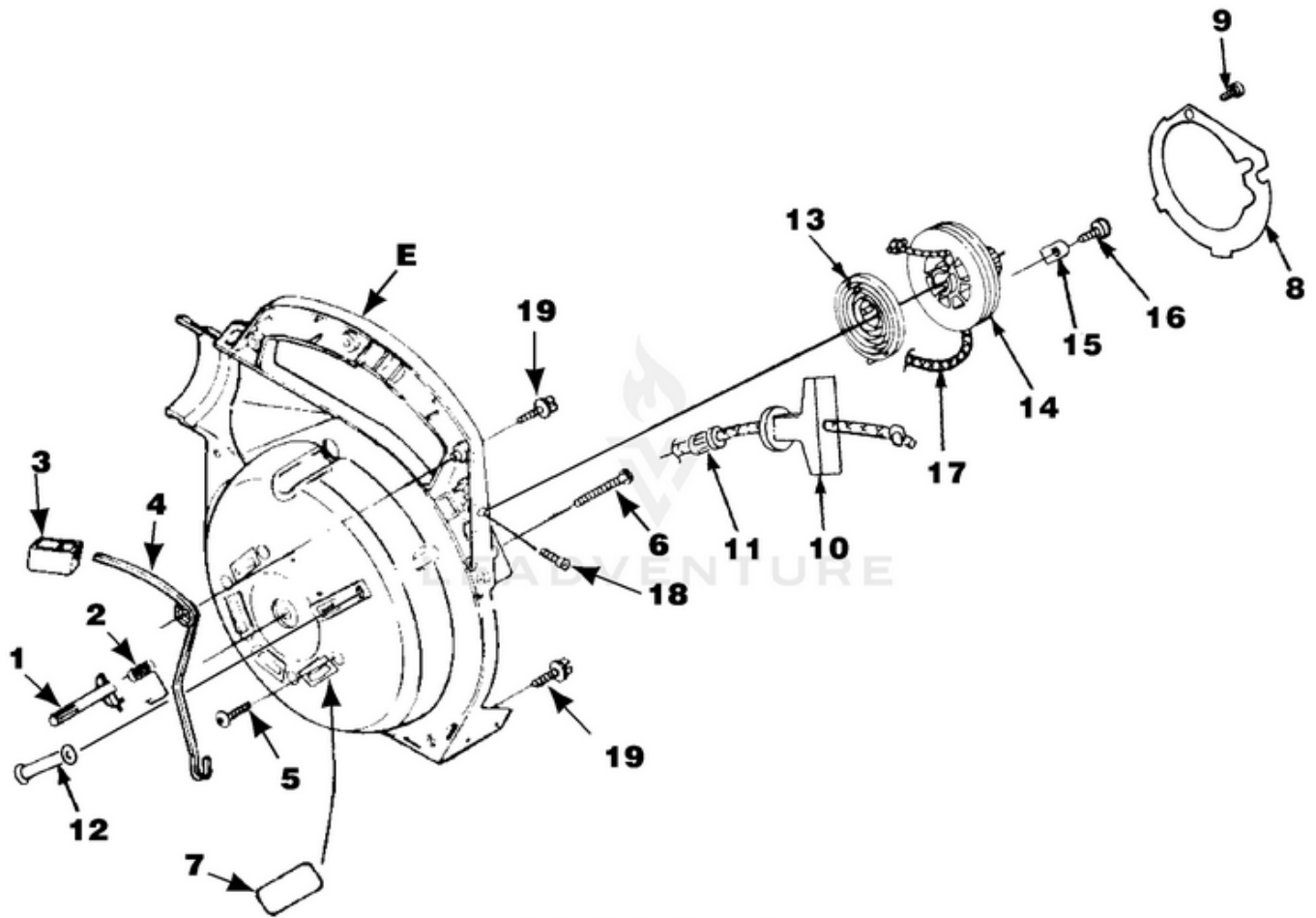


Rendered by LeadVenture, Inc.

| Ref # | Part #  | Description                         | Qty | Context Note                                    |
|-------|---------|-------------------------------------|-----|-------------------------------------------------|
| A     | UP04486 | MUFFLER-Complete                    | 1   | Includes items 1-11                             |
| 1     | UP03902 | SCREW-Sems Hex Hd. (10-24 x 2 1/2") | 2   | Torque Specs 40-50 In/Lbs, 4.5-5.6 Nm.          |
| 2     | UP03810 | MUFFLER COVER                       | 1   |                                                 |
| 3     | UP03813 | WASHER-Insulating                   | 1   |                                                 |
| 4     | UP03901 | WASHER-Flat                         | 1   |                                                 |
| 5     | UP03814 | SPRING-Compression                  | 1   |                                                 |
| 6     | UP04289 | DEFLECTOR-Muffler                   | 1   |                                                 |
| 7     | UP03860 | SPACER-Muffler                      | 1   |                                                 |
| 8     | UP03815 | SCREEN-Spark Arrestor               | 1   |                                                 |
| 9     | UP03918 | PLATE-Reinforcing                   | 1   |                                                 |
| 10    | UP04305 | BODY-Muffler                        | 1   |                                                 |
| 11    | UP03817 | GASKET-Muffler                      | 1   | Also included with Short block & Cylinder Kits. |
| 12    | UP03885 | NUT-Hex (10-24)                     | 2   | Torque Specs 30-40 In/Lbs, 3.4-4.5 Nm.          |
| D     | UP00011 | AIR FILTER KIT                      | 1   | Includes items 13-14                            |
| 13    | UP00012 | AIR FILTER                          | 1   |                                                 |
| 14    | UP03890 | SCREW-Thd. Form. (#8-16 x 3/4")     | 2   | Torque Specs 30-40 In/Lbs, 3.4-4.5 Nm.          |



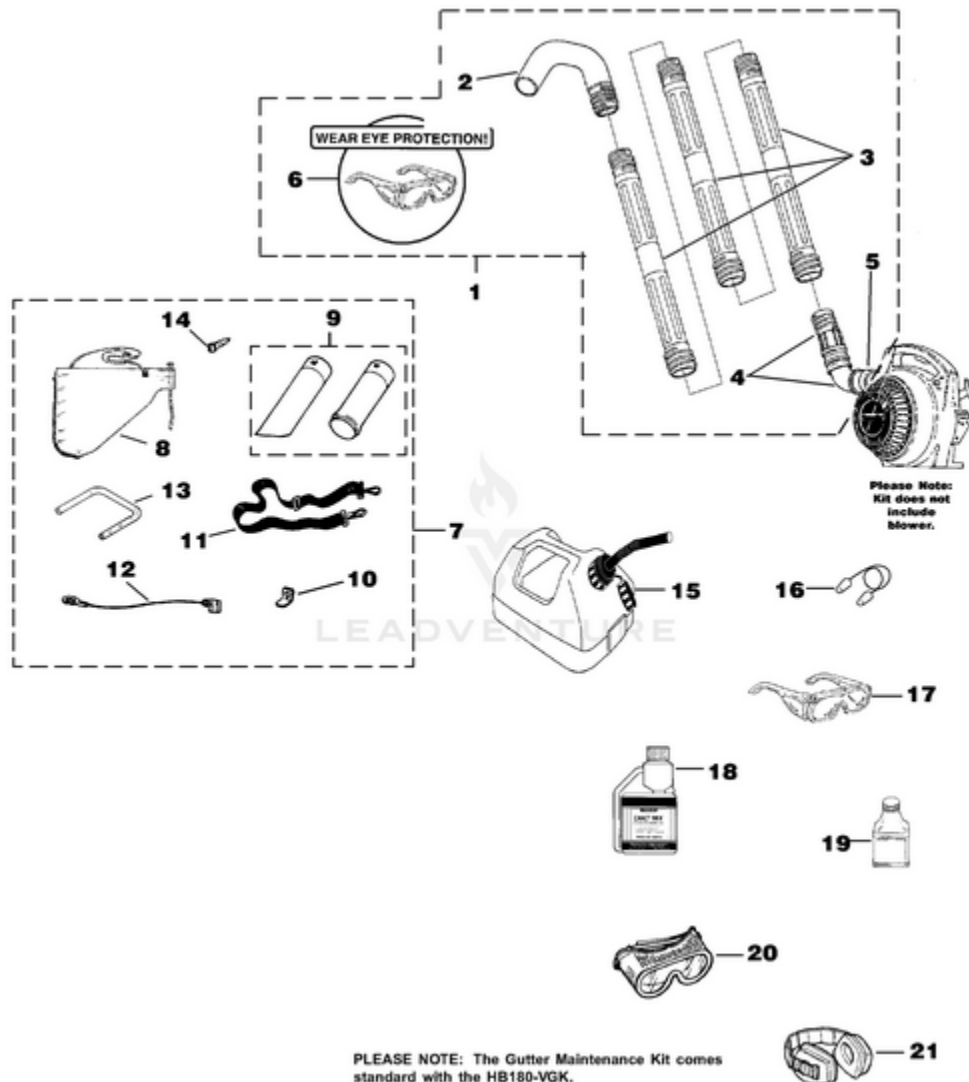
HB180VI Blower UT-08016-G - Starter



Rendered by LeadVenture, Inc.

| Ref # | Part #  | Description                       | Qty | Context Note                           |
|-------|---------|-----------------------------------|-----|----------------------------------------|
| 1     | UP03800 | LATCH-Throttle                    | 1   |                                        |
| 2     | UP03811 | SPRING-Throttle Latch             | 1   |                                        |
| 3     | UP03798 | TRIGGER-Throttle                  | 1   |                                        |
| 4     | UP03803 | LEVER-Throttle                    | 1   |                                        |
| 5     | UP03406 | SCREW-Thread Form. (10-24 X 3/4") | 4   | Torque Specs 55-60 In/Lbs, 6.2-6.8 Nm. |
| 6     | UP03869 | SCREW-Thread Form. (#10 X 1 5/8") | 1   | Torque Specs 20-30 In/Lbs, 2.3-3.4 Nm. |
| E     | UP06792 | VOLUTE HOUSING & STARTER          | 1   | Includes items 7-17                    |
| 7     | UP03822 | KIT-Sealing                       | 1   |                                        |
| 8     | UP04279 | PLATE-Rotor                       | 1   |                                        |
| 9     | UP03894 | SCREW-Thread Form. (#6 X 1 3/8")  | 1   | Torque Specs 8-12 In/Lbs, .9-1.4 Nm.   |
| 10    | UP04276 | GRIP-Starter                      | 1   |                                        |
| 11    | UP03910 | BUSHING-Starter                   | 1   |                                        |
| 12    | UP03809 | BUSHING-Starter Rope              | 1   |                                        |
| 13    | UP03917 | SPRING & CONTAINER                | 1   |                                        |
| 14    | UP04349 | PULLEY-Starter                    | 1   |                                        |
| 15    | UP03919 | BRACKET-Retaining                 | 2   |                                        |
| 16    | UP03897 | SCREW-Thread Form. (#10 X 1/2")   | 2   | Torque Specs 30-40 In/Lbs, 3.4-4.5 Nm. |
| 17    | UP03911 | ROPE-Starter                      | 1   |                                        |
| 18    | UP03887 | SCREW-Phil. Hd. (8-32 X 5/8")     | 1   | Torque Specs 20-30 In/Lbs, 2.3-3.4 Nm. |
| 19    | UP03900 | SCREW-Thread Form. (10-24 X 3/4") | 6   | Torque Specs 20-30 In/Lbs, 2.3-3.4 Nm. |

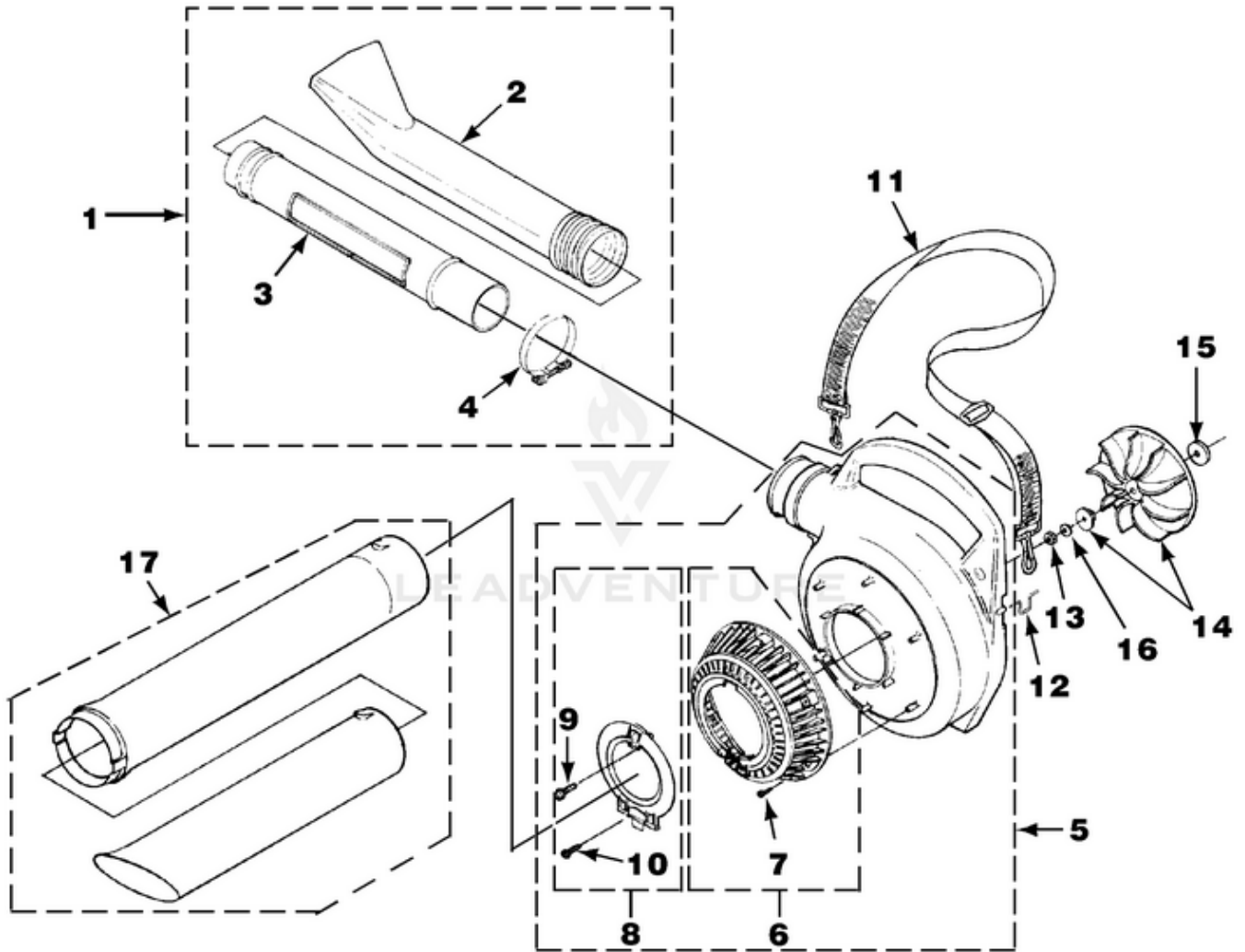
# HB180VI Blower UT-08016-G - Tubes -Accessories



Rendered by LeadVenture, Inc.

| Ref # | Part #  | Description                           | Qty | Context Note                                                                   |
|-------|---------|---------------------------------------|-----|--------------------------------------------------------------------------------|
| 1     | A02514D | GUTTER<br>MAINTENANCE KIT             | 1   | (HB100's, HB180's, HB25150, HB25150V,<br>HB290's, HB390's); Includes items 2-6 |
| 2     | UP06830 | FULL ELBOW                            | 1   |                                                                                |
| 3     | UP05618 | STRAIGHT TUBE                         | 3   |                                                                                |
| 4     | UP06836 | UPPER ELBOW &<br>SWIVEL ADAPTER       | 1   |                                                                                |
| 5     | UP03821 | CLAMP w/Fasteners                     | 1   |                                                                                |
| 6     | UP06835 | SAFETY GLASSES-Clear                  | 1   |                                                                                |
| 7     | UP04152 | VACUUM KIT                            | 1   | (HB180's, HB25150, HB25150V, HB290's,<br>HB390's); Includes items 8-14         |
| 8     | UP04548 | LEAF BAG                              | 1   |                                                                                |
| 9     | UP06705 | VACUUM TUBE KIT w/<br>Decal           | 1   |                                                                                |
| 10    | UP03834 | TAB-Male                              | 1   |                                                                                |
| 11    | UP06723 | HARNESS-Shoulder                      | 1   |                                                                                |
| 12    | UP03823 | LEAD-Ground                           | 1   |                                                                                |
| 13    | UP03816 | HANDLE                                | 1   |                                                                                |
| 14    | UP03889 | SCREW                                 | 1   |                                                                                |
| 15    | A02976A | GAS CAN 1 1/4 Gallon                  |     |                                                                                |
| 16    | UP06839 | EAR PLUGS                             |     |                                                                                |
| 17    | UP06835 | SAFETY GLASSES-Clear                  |     |                                                                                |
| 18    | 01231D  | EXACT MIX(TM) Oil - 1<br>pint (50:1)  |     |                                                                                |
| 19    | 08581   | EXACT MIX(TM) Oil - 2.6<br>oz. (50:1) |     |                                                                                |
| 20    | UP06778 | GOGGLES                               |     |                                                                                |
| 21    | UP07694 | EAR PROTECTORS                        |     |                                                                                |

HB180VI Blower UT-08016-G - Volute, Fan & Tubes



Rendered by LeadVenture, Inc.

| Ref # | Part #  | Description                       | Qty | Context Note                               |
|-------|---------|-----------------------------------|-----|--------------------------------------------|
| 1     | UP06741 | BLOWER TUBE KIT                   | 1   | Includes items 2-4                         |
| 2     | UP03812 | NOZZLE-Sweeper                    | 1   |                                            |
| 3     | UP04365 | TUBE                              | 1   |                                            |
| 4     | UP03821 | CLAMP w/Fasteners                 | 1   |                                            |
| 5     | UP03861 | VOLUTE HOUSING KIT                | 1   | Includes items 6-10                        |
| 6     | UP06720 | BLOWER VAC GRILLE KIT             | 1   | Includes item 7                            |
| 7     | UP03894 | SCREW-Thread Form. (#6 X 3/8")    | 6   | Torque Specs 8-12 In/Lbs, .9-1.4 Nm.       |
| 8     | UP06613 | ACCESS DOOR KIT                   | 1   | Includes items 9-10                        |
| 9     | UP03888 | SCREW-Thread Rolling (#10 X 5/8") | 1   | Torque Specs 10-20 In/Lbs, 1.1-2.3 Nm.     |
| 10    | UP03893 | SCREW-Thread Form. (#8 X 1/2")    | 1   | Torque Specs 8-12 In/Lbs, .9-1.4 Nm.       |
| 11    | UP06723 | SHOULDER STRAP                    | 1   |                                            |
| 12    | UP03818 | WIRE LOOP                         | 1   |                                            |
| 13    | UP03884 | NUT-Hex (3/8-24)                  | 1   | Torque Specs 130-150 In/Lbs, 14.7-16.9 Nm. |
| 14    | UP06826 | BLOWER FAN KIT                    | 1   |                                            |
| 15    | UP03836 | WASHER-Flat                       | 2   |                                            |
| 16    | UP03835 | WASHER-Bellville (3/8")           | 1   |                                            |
| 17    | UP06705 | TUBE Kit w/Decals                 | 1   | (Vacuum units only)                        |