



BOSCH

Angle Grinder

GWS 6-100 | 0 601 375 043

Table of Content

Spare parts list.....	2
Illustration - Type.....	4

Spare parts list

Item	Part Number	Description		
1	1 619 P09 772	Motor Housing		
2	1 604 220 328	Field	220-240V	
3	1 604 010 626	Armature	220-240V	
3/50	1 606 610 141	Fan		
4	1 607 200 146	Switch		
5	1 604 460 263	Power supply cord H05 W-F	CN 2,65m 2 x 0,75mm	
6	2 600 703 012	Grommet	Ø6,5-Ø6,9x95 MM	
7	1 601 302 017	Fastening Clamp		
9	2 609 130 611	Manufacturer's nameplate	GWS 6-100	
12	1 619 P07 647	Suppression Filter		
13	2 600 905 032	Ball Bearing	7x19x6	
14	1 619 P11 240	groove ball bearing		
16	1 619 P01 811	Brush Holder		
17	1 604 652 013	Spiral Spring		
18	1 604 611 031	Compression Spring		
22	1 602 319 009	Adjusting Slide		
23	1 602 026 068	Switch Handle	BLACK	
25	1 605 500 194	Housing Cover	BLUE	
26	1 600 502 024	Intermediate Ring		
27	1 600 206 025	Rubber Ring		
29	1 600 591 023	Air-Deflector Ring		
30	1 600 591 024	Air-Deflector Ring		
32	1 603 523 111	Grinding Spindle	M10, SW12	
33	1 600 210 041	O-Ring	42,0x1,1 MM	
35	1 600 136 016	Shim	0,1 MM	THICK
35	1 600 136 017	Shim	0,2 MM	THICK
37	1 600 100 033	Cover Disc		
38	2 609 110 150	Conversion Gear		
39	2 609 110 149	Pinion		
45	2 915 011 007	Hex Nut	DIN 934-M6-8-A	
47	2 609 110 052	Special Screw		
48	1 619 P00 220	Torx Oval-Head Screw	3x10	
49	1 603 435 068	Thread-forming tap. Screw	DIN 7500, M4x10, SR10.2	
50	2 910 611 020	Tapping Screw	DIN 7981-ST3,9x19-C-H	

Spare parts list

Item	Part Number	Description	
55	2 910 611 022	Tapping Screw	DIN 7981-ST3,9x25-C-H
80	1 619 P09 390	Cover Disc	
808	1 619 P00 565	Nameplate	
810	1 607 014 145	Carbon-Brush Set	
821	1 605 806 466	Gear Housing	
828	1 605 805 090	Bearing Flange	BLACK
840	1 607 000 298	Push-Button	BLACK
841	1 600 910 018	Needle bearing	Ø8xØ12x8 MM
650/10	1 602 025 09T	Auxiliary Handle	
650/20	1 619 P09 976	Round Nut With 2 Holes	
650/30	2 609 110 015	Pin-Type Face-Wrench	
650/50	1 605 703 113	Clamping-Flange	M10, 16-20 MM
651	2 609 110 050	Protective Guard	Ø 115 MM

Illustration - Type - E

0 601 375 043
Stand 03-07
Issue 08-01-28

Fig./Abb. 1

Gerad - Verzahnung

- Vor Demontage des Ankers Kohlebürsten 5mm zurückziehen !
Before the armature is removed the carbon brushes must be withdrawn by at least 5mm !

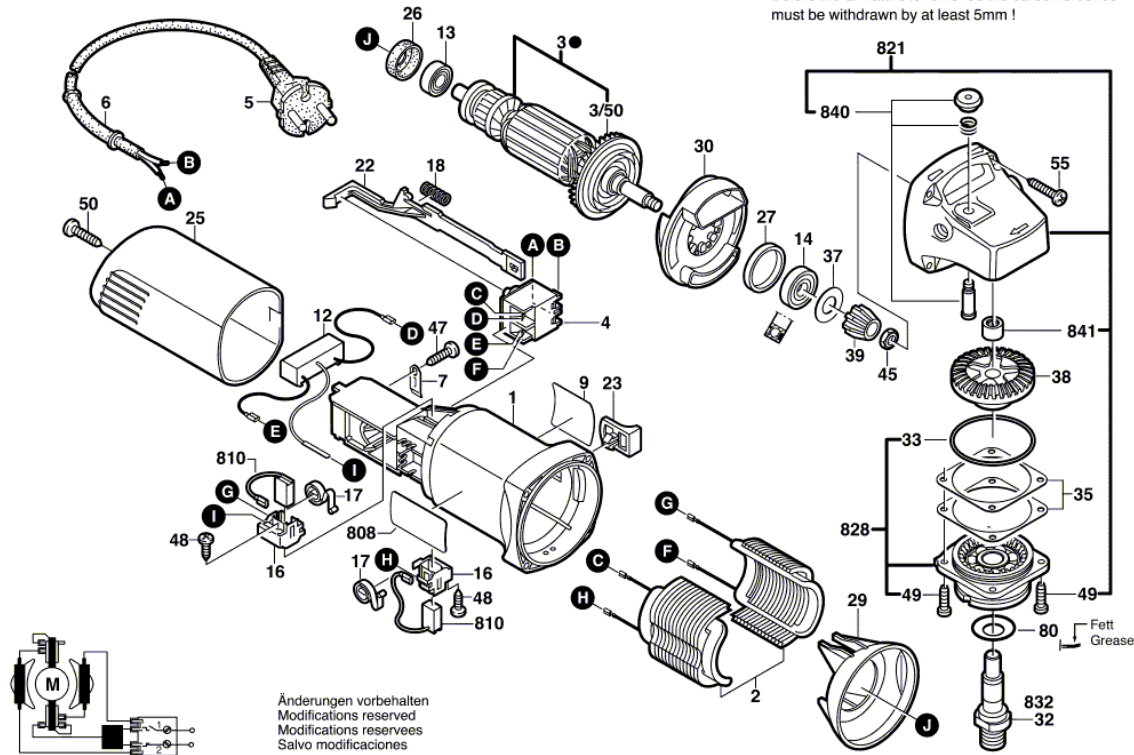
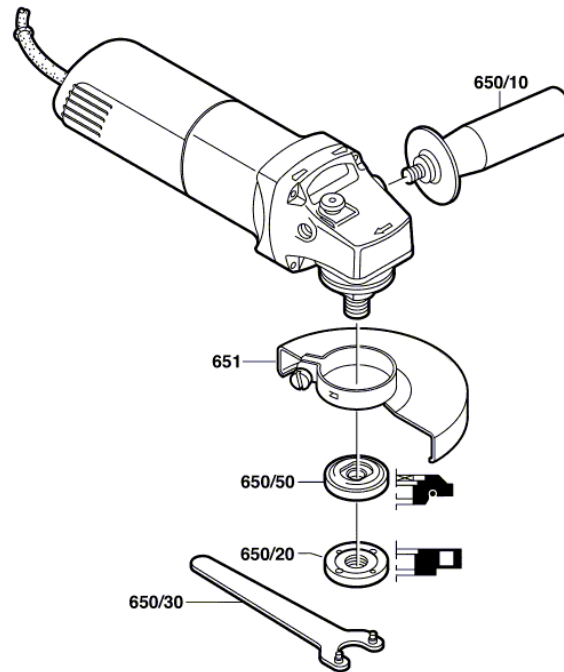


Illustration - Type - E

0 601 375 043
Stand } 03-04-09 **Fig./Abb. 2**
Issue }



Änderungen vorbehalten
Modifications reserved
Modificaciones reservadas
Salvo modificaciones