



BOSCH

Cordless Drill Driver

GSR 180-LI | 3 601 JF8 180

Table of Content

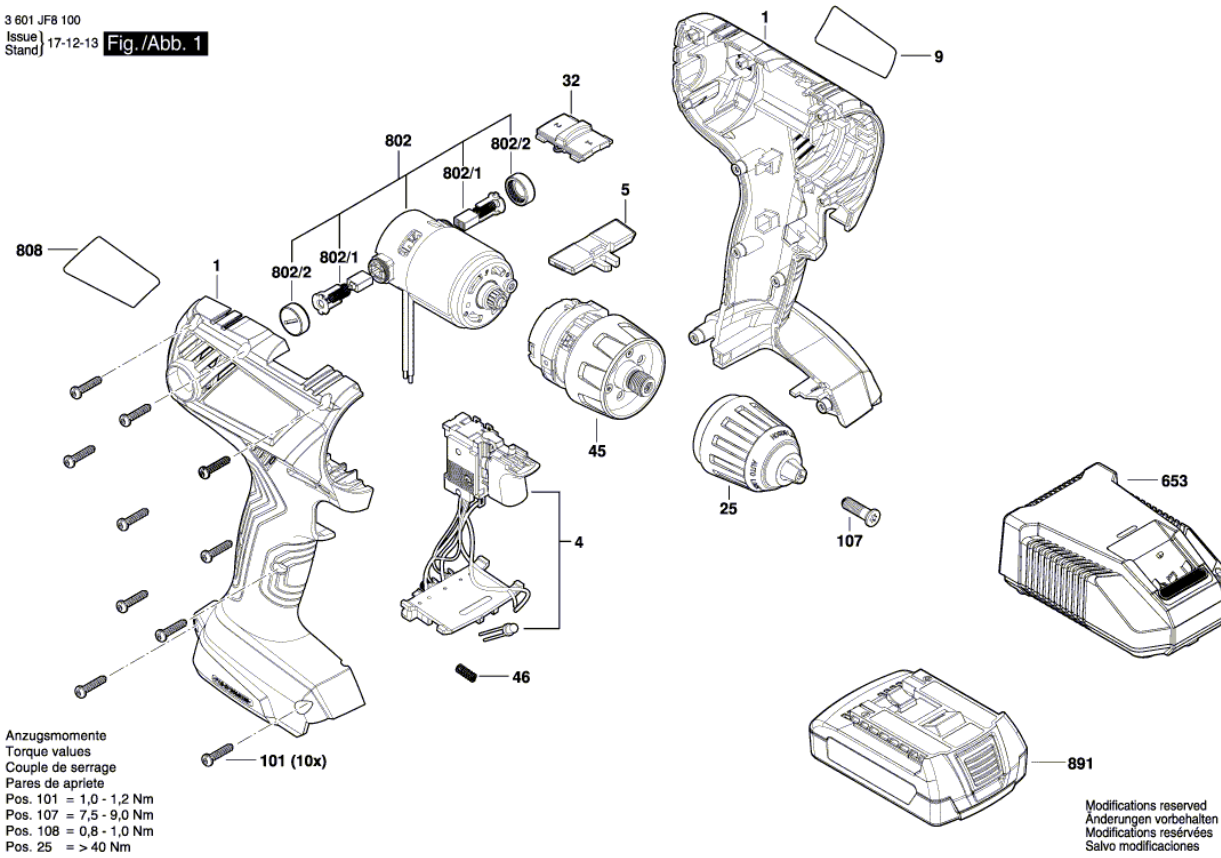
Spare parts list.....	2
Illustration - Type.....	3

Spare parts list

Item	Part Number	Description	
1	2 609 101 741	Housing	
4	2 607 202 346	Electronics Module	
5	2 609 101 484	Adjusting lever	
9	2 609 138 606	Manufacturer's nameplate	GSR 180-LI
25	2 609 112 190	Keyless Chuck	
32	2 609 199 812	Switchover Unit	
45	1 600 A00 P8Z	Gear Box	
46	1 609 280 477	Compression Spring	
101	2 609 110 201	Torx Flat-Head Screw	3x16
107	2 603 421 229	Countersunk-Head Screw LEFTHAND THREADS	M6x23
653	2 607 226 297	Fast Charger 2A	CN GAL 18V-20 220V 12V-18V
802	1 607 022 66N	DC motor	18V
802/1	1 607 000 CZ1	Carbon-Brush Set	
802/2	2 609 199 049	Sealing cap	
808	1 601 11A 6YM	Nameplate	
891	1 607 A35 0JR	Battery Pack	GBA 18V 1.5Ah
891	1 607 A35 0MA	Battery Pack	GBA 18V 2.0Ah

Illustration - Type - E

3 601 JF8 100
 Issue |
 Stand | 17-12-13 Fig./Abb. 1



Anzugsmomente
 Torque values
 Couple de serrage
 Pares de apriete
 Pos. 101 = 1,0 - 1,2 Nm
 Pos. 107 = 7,5 - 9,0 Nm
 Pos. 108 = 0,8 - 1,0 Nm
 Pos. 25 = > 40 Nm

Modifications reserved
 Änderungen vorbehalten
 Modifications réservées
 Salvo modificaciones