

## Cordless Drill Driver - 3 601 JF6 010 - GSR12V-140...

[www.powertools-aftersaleservice.com](http://www.powertools-aftersaleservice.com)



**BOSCH**

Item	Part Number	Description	Illustration	Price	Quantity	Price Group
1	2 609 100 824	Housing BLUE	1	-,-	1	29
4	1 607 233 5DK	Electronics Module	1	-,-	1	34
5	2 609 100 825	Changeover Lever	1	-,-	1	10
9	1 601 11C 12K	Manufacturer's nameplate GSR12V-140FC	1	-,-	1	13
20	2 609 100 826	Lens	1	-,-	1	10
32	2 609 199 279	Switchover Unit	1	-,-	1	10
41	2 609 132 378	Sticker	1	-,-	1	13
45	1 600 A00 9AN	Gear Box	1	-,-	1	37
70	2 609 110 537	Clip	1	-,-	1	11
91	1 607 A35 0C8	Battery Pack BAT 414 10,8/12V 2,0Ah	1	-,-	1	-
101	2 609 110 883	Screw	1	-,-	8	10
108	2 609 160 063	Screwdriver Bit	1	-,-	1	15
653	2 607 225 519	Fast Charger USA 120/3,6-10,8V,1h	1	-,-	1	39
802	2 609 199 258	DC motor 10,8V - 12V	1	-,-	1	29
808	1 601 11A 3RC	Nameplate	1	-,-	1	13
855	1 607 000 CD7	Chuck attachment	2	-,-	1	34
856	1 607 000 CD8	Bit holder	2	-,-	1	33
857	1 607 000 CE0	Right-angle attachment	2	-,-	1	40
858	1 607 000 CE1	Eccentric attachment	2	-,-	1	40

Illustration - Type E

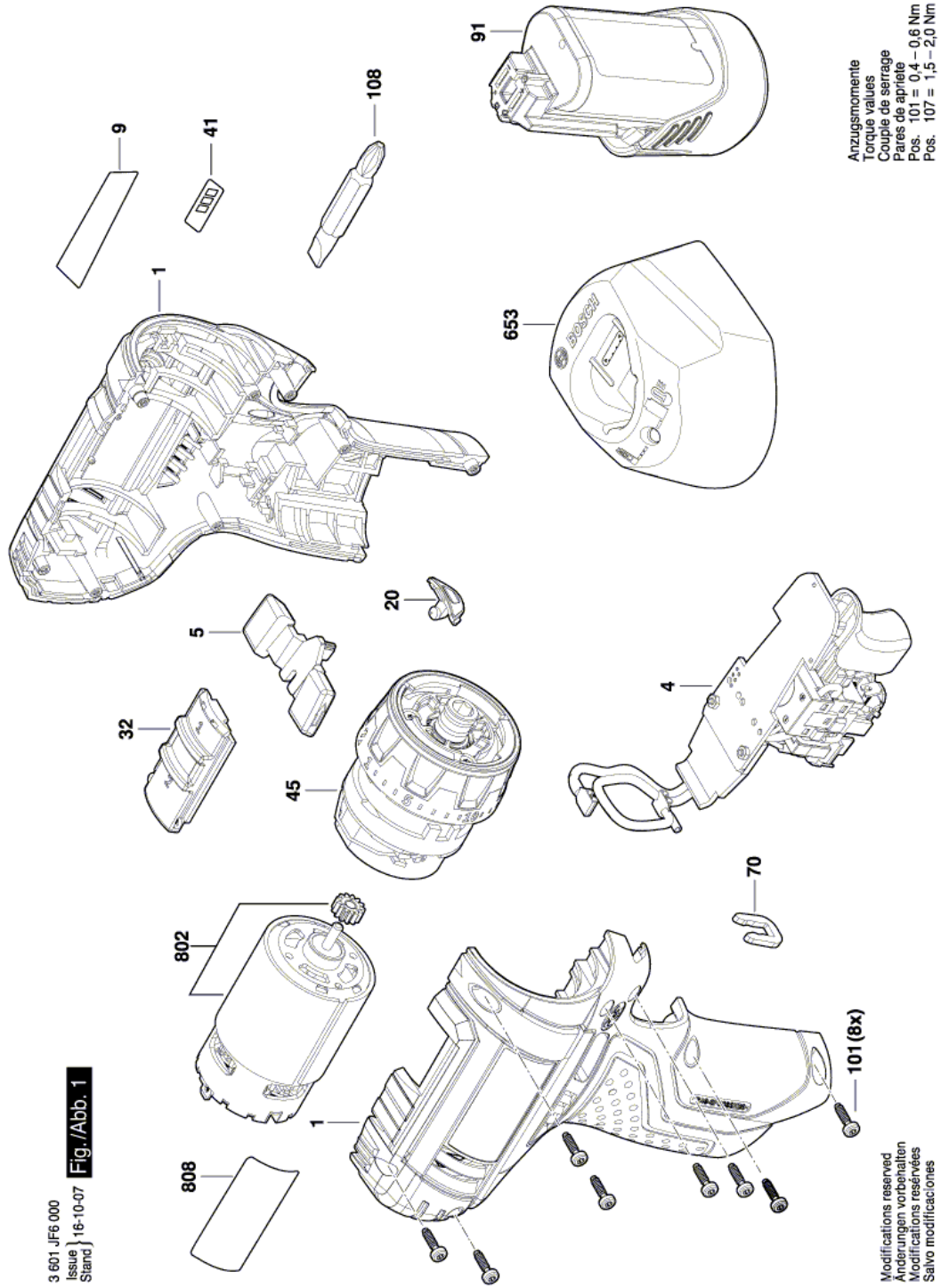
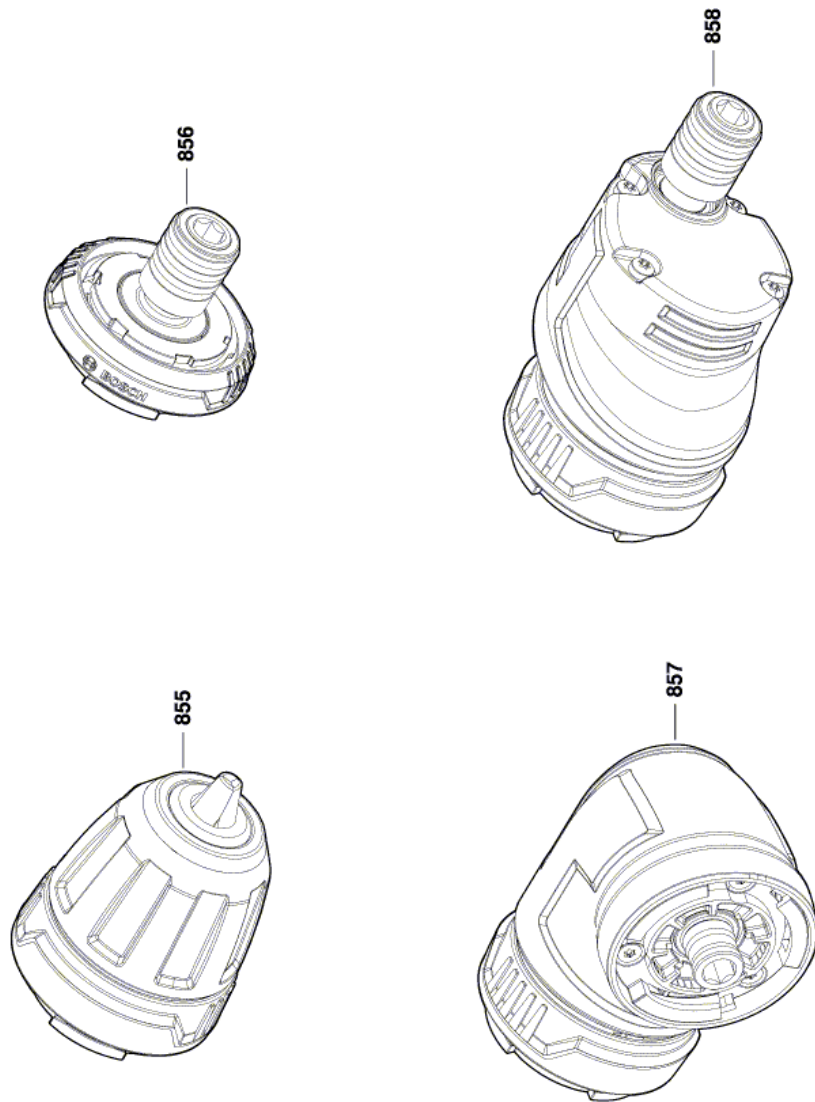


Illustration - Type E



3 601 JF6 000  
Issue } 17-08-10  
Stand } **Fig./Abb. 2**

Modifications reserved  
Änderungen vorbehalten  
Modifications réservées  
Salvo modificaciones

Information subject to change without further notice.