



BOSCH

Cordless Circular Saw

GKS18V-25L | 3 601 FB9 010

Table of Content

Spare parts list.....	2
Illustration - Type.....	4

Cordless Circular Saw | GKS18V-25L | 3 601 FB9 010

				Spare parts list	
Item	Part Number	Description		Illustration	
1	1 605 108 2L2	Housing		1	
4	1 604 400 01S	Cable		1	
5	1 607 233 5NK	Electronics Module		1	
6	1 600 A02 5GS	Cover		1	
26	1 619 P06 237	Flange Bushing		1	
31	1 600 A01 NS1	Protection cover		1	
32	2 610 386 516	Torx Oval-Head Screw	M4x12	1	
33	1 600 210 041	O-Ring	42,0x1,1 MM	1	
37	2 605 730 067	Suction Socket		1	
51	1 600 A01 D0W	Locking Washer		1	
52	1 600 A01 Z45	Screw		1	
54	1 619 P06 238	Locking Washer		1	
56	1 600 A02 4PF	Scale		1	
58	1 600 A01 VV1	Lower guard		1	
60	1 600 A00 XC9	Extension Spring		1	
61	1 619 P06 236	Bumper	BLACK	1	
62	1 604 612 02N	Compression Spring		1	
64	1 600 A02 B0J	Lever		1	
67	1 619 P11 929	Screw		1	
68	2 609 003 491	Hex Nut		1	
72	1 609 280 477	Compression Spring		1	
73	1 600 A01 BV3	Ratchet Cap		1	
74	1 600 A01 YS8	Set screw		1	
77	2 916 011 014	Plain Washer	DIN 125-A 6,4-ST	1	
79	1 600 A01 NS6	Safety Switch		1	
80	1 600 A02 7XG	Lever		1	
82	1 600 A01 P78	Rod		1	
84	2 610 957 469	Hex Socket Head Cap Screw		1	
85	1 603 480 018	Wing Screw	M6	1	
86	2 609 007 156	Washer		1	
87	2 916 080 014	Locking Washer	DIN 6799-12-FST	1	
88	1 600 A01 DD4	Corrugated Washer		1	
91	2 603 490 022	Screw	4x16	1	
92	2 914 491 413	Screw		1	
94	1 619 P06 246	Screw		1	

Spare parts list

Item	Part Number	Description	Illustration
97	1 600 A01 VL3	Locking Lever	1
98	1 600 A01 VL4	Screw	1
99	1 600 A01 VL5	Hex Nut	1
101	1 603 430 03T	Screw	1
106	1 600 A02 4ET	Contact Plate	1
120	1 600 A02 8YL	Wafer	1
121	1 600 A00 0LE	Lens	1
137	1 600 A01 S1S	Disc 1,4 MM	1
137	2 916 190 013	Shim ring 1,0 MM	1
138	1 600 100 632	Shim 0,2 MM THICK	1
140	1 600 A02 4PG	Scale	1
150	1 600 A02 1DZ	Cover	1
180	1 601 11C 42C	Warning Plate	1
181	1 601 11C 2YM	Warning Plate	1
182	1 601 11C 42D	Warning Plate	1
183	1 601 11C 2YR	Warning Plate	1
620	2 610 364 015	Hexagon Socket Screw Key 5 MM	1
660	1 619 P06 341	Washer	1
808	1 601 11A 8FZ	Nameplate	1
822	1 607 000 DL5	Auxiliary Handle	1
853	1 607 000 E5S	Drive Unit	1
869	1 607 000 E5T	Base Plate	1
653	1 607 A35 0CH	Battery Pack GBA18V80 8.0Ah ProCore SCM	2
653	1 607 A35 0CM	Battery Pack USA GBA18V120	2
654	2 607 225 927	Charger USA BC 1880 CV 13,3-18V/120V	2

Illustration - Type - E

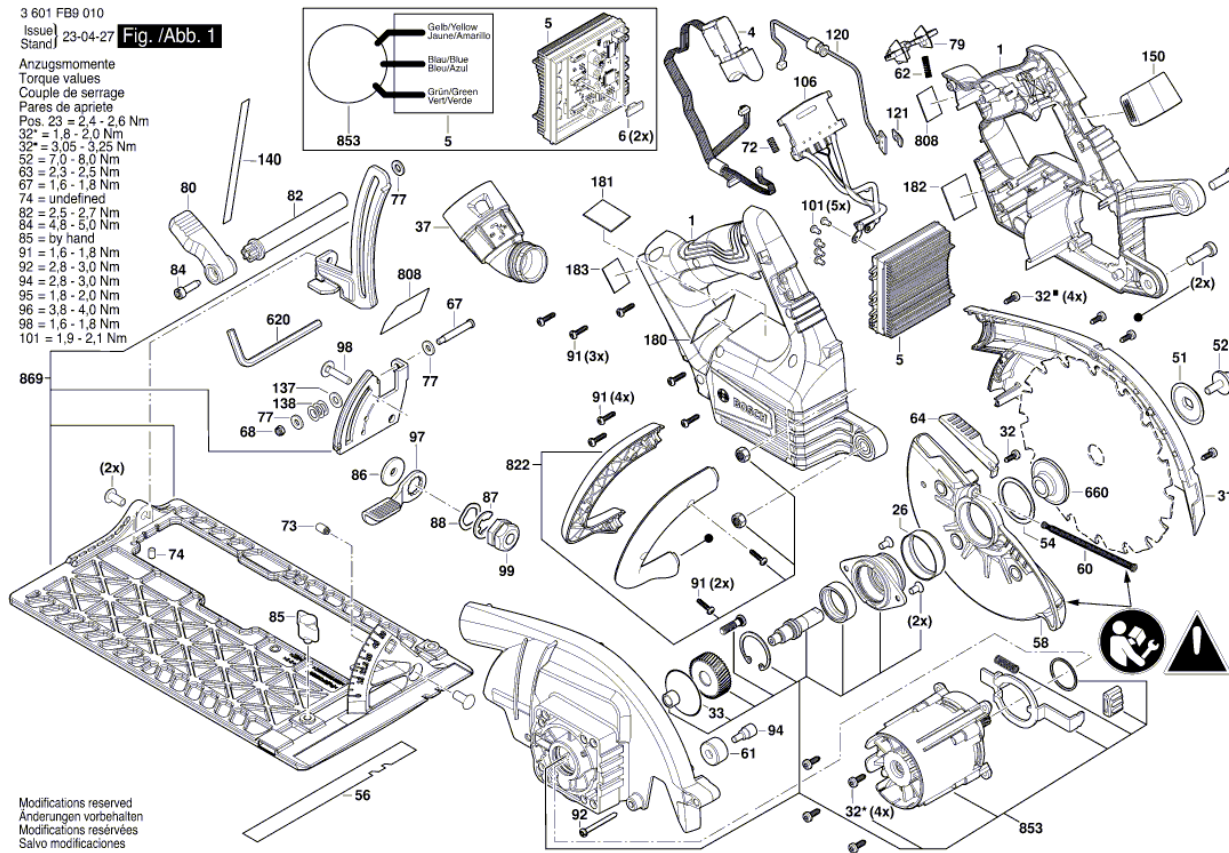
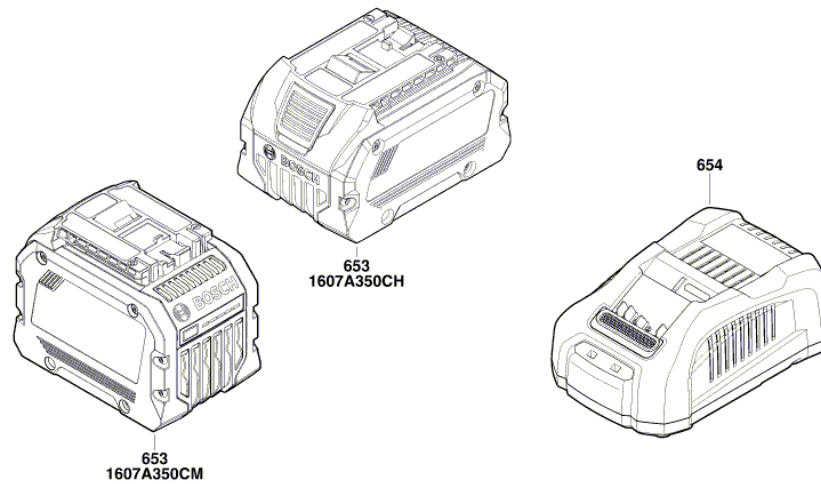


Illustration - Type - E

3 601 FB9 010
Issue |
Stand | 21-07-15 Fig. /Abb. 2



Modifications reserved
Änderungen vorbehalten
Modifications réservées
Salvo modificaciones