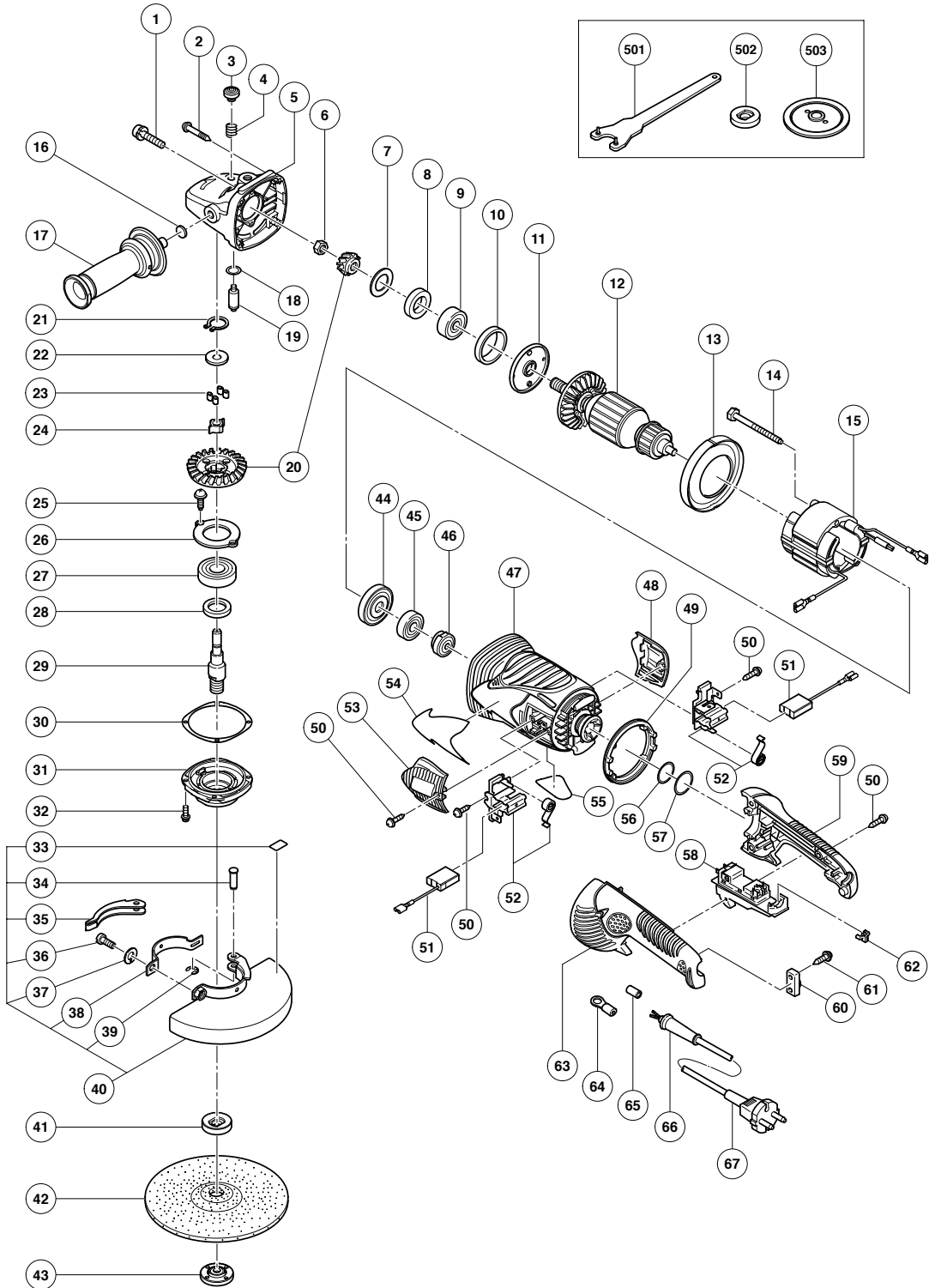


## ELECTRIC TOOL PARTS LIST

DISC GRINDER  
Model G 18SCY

2006 · 10 · 19

(E1)



## PARTS

G 18SCY

ITEM NO.	CODE NO.	DESCRIPTION	NO. USED	REMARKS
1	984-509	SEAL LOCK HEX. SOCKET HD. BOLT M5X14	2	
2	323-209	TAPPING SCREW (W/FLANGE) D5X35 (BLACK)	4	
3	306-888	PUSHING BUTTON	1	
4	320-219	SPRING	1	
5	326-717	GEAR COVER ASS'Y	1	INCLUD. 3, 4, 16, 18, 19
6	320-226	SPECIAL NUT M10	1	
7	320-221	SEAL WASHER	1	
8	320-222	FELT PACKING	1	
9	630-1VV	BALL BEARING 6301VVCMP2L	1	
10	994-208	RUBBER RING (B)	1	
11	320-220	BEARING COVER (A)	1	
* 12	360-594U	ARMATURE ASS'Y 110V-120V	1	INCLUD. 8, 9, 44, 45
* 12	360-777E	ARMATURE 220V-230V	1	
* 12	360-594F	ARMATURE 240V	1	
13	320-215	FAN GUIDE	1	
14	984-271	HEX. HD. TAPPING SCREW D5X75	2	
* 15	340-682C	STATOR 110V-120V	1	
* 15	340-682E	STATOR 220V-240V	1	
16	937-033	FELT WASHER	1	
17	322-411	SIDE HANDLE	1	
18	320-218	O-RING	1	
19	306-890	LOCK PIN	1	
* 20	326-719	GEAR AND PINION SET	1	
* 20	326-718	GEAR AND PINION SET	1	FOR USA, CAN
21	939-540	RETAINING RING FOR D10 SHAFT (10 PCS.)	1	
22	326-722	COUPLING COVER	1	
23	326-721	COUPLING DAMPER	4	
24	326-720	COUPLING	1	
25	949-236	MACHINE SCREW M5X10 (10 PCS.)	2	
26	326-723	BEARING COVER (B)	1	
27	630-2VV	BALL BEARING 6302VVCMP2L	1	
28	990-852	FELT PACKING (B)	1	
* 29	326-727	SPINDLE	1	
* 29	326-728	SPINDLE	1	FOR USA, CAN
30	320-228	SEAL PLATE	1	
31	320-227	PACKING GLAND	1	
32	994-192	HEX. SOCKET HD. BOLT (W/FLANGE) M5X16	4	
33	311-492	LABEL	1	
34	321-546	SET PIN	1	
35	321-545	LEVER	1	
36	306-887	BOLT M8X22	1	
37	949-457	SPRING WASHER M8 (10 PCS.)	1	
38	321-544	SET PIECE	1	
39	673-489	RETAINING RING (E-TYPE) FOR D5 SHAFT	1	
* 40	321-543	WHEEL GUARD ASS'Y	1	INCLUD. 33-39
* 40	324-266	WHEEL GUARD ASS'Y	1	INCLUD. 33-39 FOR USA, CAN
* 41	937-907Z	WHEEL WASHER (A)	1	
* 41	937-922P	WHEEL WASHER (B) FOR D5/8" HOLE	1	FOR USA, CAN
* 41	937-908Z	WHEEL WASHER (B)	1	FOR AUS
* 42	316-824	D. C. WHEELS 180MM A24R (25 PCS.)	1	EXCEPT FOR GBR, HOL, ESP, SWE, AUT, USA, CAN
* 43	937-909Z	WHEEL NUT M14X2	1	

# PARTS

G 18SCY

ITEM NO.	CODE NO.	DESCRIPTION	NO. USED	REMARKS	
* 43	937-923P	WHEEL NUT 5/8"-11UNC	1	FOR USA, CAN	
* 43	937-917Z	WHEEL NUT (B)	1	FOR AUS	
44	320-216	DUST SEAL	1		
45	600-0VV	BALL BEARING 6000VVCMP2L	1		
46	321-536	BEARING BUSHING	1		
47	326-712	HOUSING ASS'Y	1	INCLUD. 46	
48	326-716	BRUSH COVER	1		
49	326-726	HANDLE DAMPER	1		
50	305-812	TAPPING SCREW (W/FLANGE) D4X16 (BLACK)	6		
* 51	999-061	CARBON BRUSH 7X17X22.5 (1 PAIR)	2		
* 51	999-061	CARBON BRUSH 7X17X22.5 (1 PAIR)	1	FOR EUROPE	
* 51	999-089	CARBON BRUSH (AUTO STOP TYPE) (1 PAIR)	1	FOR EUROPE	
52	322-323	BRUSH HOLDER SET	2		
53	326-715	BRUSH COVER	1		
54		HITACHI LABEL	1		
55		NAME PLATE	1		
56	326-724	O-RING	1		
57	326-725	O-RING	1		
* 58	320-238	SWITCH (2P PILLAR TYPE) W/SAFETY LOCK	1	OFF/LOCK	
* 58	320-239	SWITCH (2P PILLAR TYPE) W/SAFETY LOCK	1	W/LOCK	
* 58	322-614	SWITCH (2P PILLAR TYPE) W/SAFETY LOCK	1	W/LOCK INCLUD. 62 FOR USA,CAN	
59	326-714	HANDLE (B)	1		
60	960-266	CORD CLIP	1		
61	984-750	TAPPING SCREW (W/FLANGE) D4X16	2		
* 62	322-549	SWITCH COVER	1	FOR USA, CAN	
63	326-713	HANDLE (A)	1		
* 64	930-804	TERMINAL M4.0 (10 PCS.)	2	FOR USA, CAN	
65	981-373	TUBE (D)	2		
* 66	940-778	CORD ARMOR D10.7	1		
* 66	958-049	CORD ARMOR D8.2	1	FOR AUS, SIN, INA	
* 67	321-537	CORD	1	(CORD ARMOR D10.7)	
* 67	321-539	CORD	1	(CORD ARMOR D10.7) FOR GBR (110V)	
* 67	500-460Z	CORD	1	(CORD ARMOR D10.7) FOR GBR (230V)	
* 67	321-538	CORD	1	(CORD ARMOR D10.7) FOR USA, CAN	
* 67	500-408Z	CORD	1	(CORD ARMOR D8.8) FOR AUS	
* 67	500-245Z	CORD	1	(CORD ARMOR D10.7) FOR SYR	
* 67	500-234Z	CORD	1	(CORD ARMOR D8.8) FOR INA	
* 67	500-474Z	CORD	1	(CORD ARMOR D10.7) FOR TPE, VEN	
* 67	500-423Z	CORD	1	(CORD ARMOR D8.8) FOR SIN	

**STANDARD ACCESSORIES**

G 18SCY

ITEM NO.	CODE NO.	DESCRIPTION	NO. USED	REMARKS	
501	937-913Z	WRENCH	1		
502	937-907Z	WHEEL WASHER (A)	1		
503	937-917Z	WHEEL NUT (B)	1	FOR AUS	

**OPTIONAL ACCESSORIES**

ITEM NO.	CODE NO.	DESCRIPTION	NO. USED	REMARKS	
601	316-824	D. C. WHEELS 180MM A24R (25 PCS.)	1		
602	310-337	SUPER WASHER	1		
603	323-993	PIPE HANDLE SET	1	INCLUD. 604	
604	985-597	BOLT M14	1	FOR PIPE HANDLE	