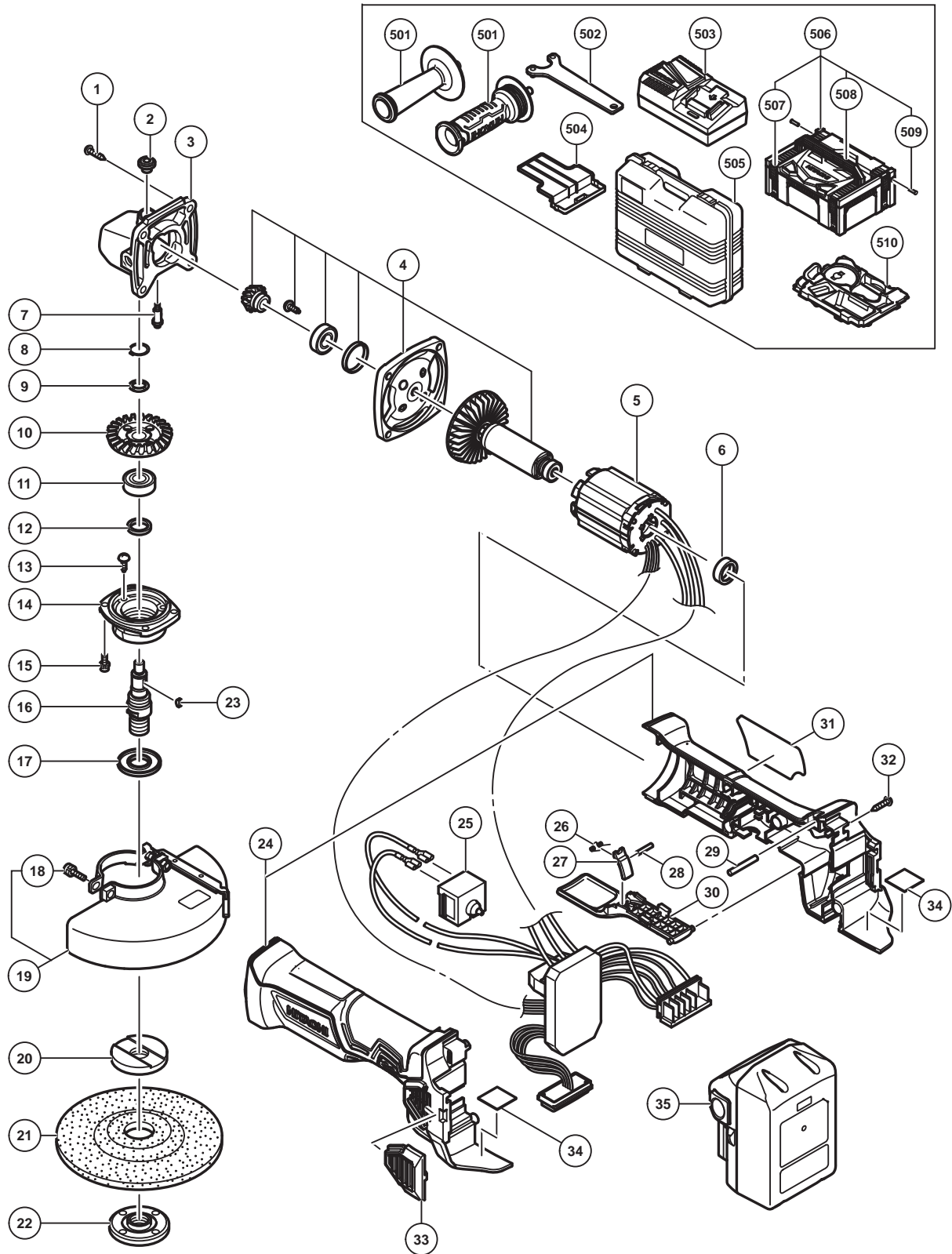


## ELECTRIC TOOL PARTS LIST

### ■ CORDLESS DISC GRINDER Model G 18DBAL

2015· 5 · 13  
(E1)



**PARTS**

G 18DBAL

ITEM NO.	CODE NO.	DESCRIPTION	NO. USED	REMARKS	
1	328643	TAPPING SCREW (W/FLANGE) D4 X 23 (BLACK)	4		
2	301944	PUSHING BUTTON	1		
3	339183	GEAR COVER ASS'Y	1	INCLUD.2,7	
4	360991	ROTOR INNER COVER SET	1		
5	339227	WIRING (18V SINGLE)	1	INCLUD.25	
6	338867	BUSHING	1		
7	301943	LOCK PIN	1		
8	316487	RETAINING RING FOR D11 SHAFT	1		
9	316486	WAVE WASHER	1		
10	328364	GEAR	1		
11	6001VV	BALL BEARING 6001VVCMP2L	1		
12	301946	FELT PACKING	1		
13	301936	SLOTTED HD. SCREW (SEAL LOCK) M4 X 10	3		
14	328198	PACKING GLAND	1		
15	307127	SEAL LOCK SCREW (W/SP. WASHER) M4 X 12	4		
*	16	328359	SPINDLE M14	1	
*	16	328360	SPINDLE 5/8"-11UNC	1	FOR USA,CAN
	17	301945	FRINGER	1	
	18	338868	SLOTTED PLUS SCREW M5	1	
*	19	338579	TOOLLESS WHEEL GUARD 115MM	1	INCLUD.18
*	19	333840	TOOLLESS WHEEL GUARD 125MM	1	INCLUD.18
*	20	937817Z	WHEEL WASHER	1	
*	20	319373	WHEEL WASHER	1	FOR USA,CAN
*	21	316821	D. C. WHEELS 115MM A36Q (25 PCS.)	1	
*	21	316822	D. C. WHEELS 125MM A36Q (25 PCS.)	1	
*	22	337329	WHEEL NUT M14	1	
*	22	937923P	WHEEL NUT 5/8"-11UNC	1	FOR USA,CAN
	23	302047	WOODRUFF KEY	1	
	24	338866	HOUSING (C).(D) SET	1	
	25	329057	PUSHING BUTTON SWITCH	1	
	26	337874	SPRING	1	
	27	337873	LOCK LEVER	1	
	28	339032	PIN	1	
	29	338869	PIN	1	
	30	337872	PADDLE LEVER	1	
	31		NAME PLATE	1	
	32	301653	TAPPING SCREW (W/FLANGE) D4 X 20 (BLACK)	5	
	33	338870	FILTER	2	
	34	338871	RUBBER CUSHION (B)	2	
*	35	336385	BATTERY BSL 1850 (EUROPE,AUS,NZL)(2 PCS.)	2	INCLUD.504
*	35	335791	BATTERY BSL 1850 (USA,CAN)	2	INCLUD.504

**STANDARD ACCESSORIES**

G 18DBAL

ITEM NO.	CODE NO.	DESCRIPTION	NO. USED	REMARKS
* 501	318312	SIDE HANDLE	1	
* 501	336865	SIDE HANDLE	1	FOR VIBRATION-ABSORBING
502	938332Z	WRENCH	1	
503		CHARGER (MODEL UC 18YFSL)	1	
504	329897	BATTERY COVER	1	
* 505	337867	CASE	1	
* 506	336471	CASE ASS'Y (STACKABLE)	1	INCLUD.507-509
* 507	336472	LATCH	4	
* 508	336473	HANDLE	1	
* 509	336474	HINGE	2	
* 510	338872	INNER TRAY	1	

**OPTIONAL ACCESSORIES**

ITEM NO.	CODE NO.	DESCRIPTION	NO. USED	REMARKS
* 601	332788	WHEEL GUARD (FOR CUTTING)	1	EXCEPT FOR GBR,USA,CAN
* 602	332787	WHEEL GUARD BASE SET	1	EXCEPT FOR GBR,USA,CAN
* 603	339151	WHEEL WASHER	1	FOR ITEM NO.601,602
* 604	338497	DUST COLLECTION ADAPTER	1	EXCEPT FOR GBR,USA,CAN
* 605	332785	WHEEL GUARD (FOR CUTTING)	1	FOR GBR
* 606	937826Z	WASHER NUT	1	EXCEPT FOR USA,CAN
* 607	938318	WASHER NUT	1	FOR USA,CAN
* 608	937825Z	RUBBER PAD	1	EXCEPT FOR USA,CAN
* 609	938317	RUBBER PAD	1	FOR USA,CAN
* 610	314095	SANDING DISCS 115MM C-P16 (10 PCS.)	1	FOR GBR,USA,CAN
* 611	314096	SANDING DISCS 115MM C-P20 (10 PCS.)	1	FOR GBR,USA,CAN
* 612	314097	SANDING DISCS 115MM C-P24 (10 PCS.)	1	FOR GBR,USA,CAN
* 613	314098	SANDING DISCS 115MM C-P30 (10 PCS.)	1	FOR GBR,USA,CAN
* 614	314099	SANDING DISCS 115MM C-P36 (10 PCS.)	1	FOR GBR,USA,CAN
* 615	314100	SANDING DISCS 115MM C-P40 (10 PCS.)	1	FOR GBR,USA,CAN
* 616	314101	SANDING DISCS 115MM C-P50 (10 PCS.)	1	FOR GBR,USA,CAN
* 617	314102	SANDING DISCS 115MM C-P60 (10 PCS.)	1	FOR GBR,USA,CAN
* 618	314103	SANDING DISCS 115MM C-P80 (10 PCS.)	1	FOR GBR,USA,CAN
* 619	314104	SANDING DISCS 115MM C-P100 (10 PCS.)	1	FOR GBR,USA,CAN
* 620	314105	SANDING DISCS 115MM C-P120 (10 PCS.)	1	FOR GBR,USA,CAN
* 621	314062	SANDING DISCS 125MM C-P16 (10 PCS.)	1	EXCEPT FOR GBR,USA,CAN
* 622	314063	SANDING DISCS 125MM C-P20 (10 PCS.)	1	EXCEPT FOR GBR,USA,CAN
* 623	314064	SANDING DISCS 125MM C-P24 (10 PCS.)	1	EXCEPT FOR GBR,USA,CAN
* 624	314065	SANDING DISCS 125MM C-P30 (10 PCS.)	1	EXCEPT FOR GBR,USA,CAN
* 625	314066	SANDING DISCS 125MM C-P36 (10 PCS.)	1	EXCEPT FOR GBR,USA,CAN
* 626	314067	SANDING DISCS 125MM C-P40 (10 PCS.)	1	EXCEPT FOR GBR,USA,CAN
* 627	314068	SANDING DISCS 125MM C-P50 (10 PCS.)	1	EXCEPT FOR GBR,USA,CAN
* 628	314069	SANDING DISCS 125MM C-P60 (10 PCS.)	1	EXCEPT FOR GBR,USA,CAN
* 629	314070	SANDING DISCS 125MM C-P80 (10 PCS.)	1	EXCEPT FOR GBR,USA,CAN
* 630	314071	SANDING DISCS 125MM C-P100 (10 PCS.)	1	EXCEPT FOR GBR,USA,CAN

