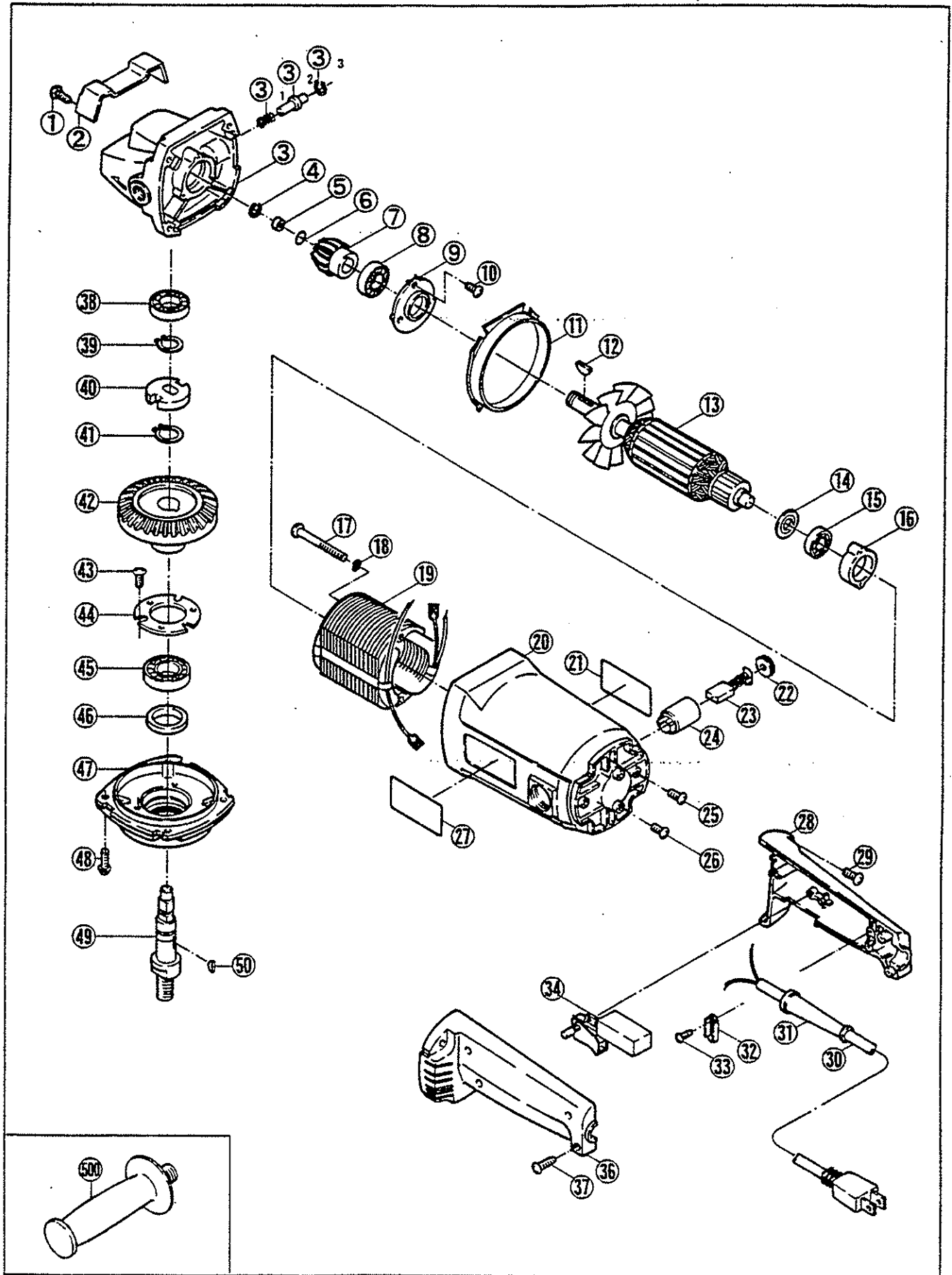


SANDER-GRINDER

G-1815C, G-2315C



PARTS LIST FOR AFTER SALES SERVICE MODEL G1815C, G2315C

PART NO.	DESCRIPTION	MODEL	QTY	REF	PART NO.	DESCRIPTION	MODEL	QTY
9060535	TAPPING SCREW (B) M5X35		4	26	9060516	TAPPING SCREW (B) M5X16		2
2 6370134	TOOL REST		1	27	6920358	"RYOBI" MARK	G1815C	1
3 6080105	GEAR CASE		1	--	6920359	"RYOBI" MARK	G2315C	1
3-1 6180090	COMPRESSION SPRING		1	28	6830697	HANDLE (A)		1
3-2 6120084	STOPPER PIN		1	29	9060530	TAPPING SCREW (B) M5X30		4
3-3 6100079	RETAINING RING R-13		1	30	6520236	CORD ASS'Y AWG16X2X2	G1815C	1
4 6100007	RETAINING RING		1	--	6520237	CORD ASS'Y AWG14X2X2	G2315C	1
5 6900090	COLLAR		1	31	6560047	CORD HOLDER		1
6 9760012	O-RING P-12		1	32	6560057	CORD CLAMP		1
7 6200102	PINION GEAR		1	33	9060412	TAPPING SCREW (B) M4X12		2
8 9896201	BALL BEARING #6201LLH		1	34	6550450	TRIGGER SWITCH		1
9 6151124	CLAMP PLATE		1	36	6830700	HANDLE (B)		1
10 9040514	TAPPING SCREW (S) M5X14		3	37	9060420	TAPPING SCREW (B) M4X20		3
11 6490180	FAN CASING		1	38	9846200	BALL BEARING #6200LLB		1
12 6100630	WOODRUFF KEY		1	39	9511400	RETAINING RING S-14		1
13 6031065	ARMATURE	G1815C	1	40	6220027	STOPPER		1
-- 6031070	ARMATURE	G2315C	1	41	9511700	RETAINING RING S-17		1
14 9791029	DUST SEAL S-10-29-2		1	42	6200060	FINAL GEAR		1
15 9896200	BALL BEARING #6200LLH		1	43	9040514	TAPPING SCREW (S) M5X14		3
16 6290030	BEARING HOUSE		1	44	6151127	CLAMP PLATE		1
17 9060585	TAPPING SCREW (B) M5X85		2	45	9896203	BALL BEARING #6203LLH		1
18 9550500	SPRING WASHER M5		2	46	6390027	FELT		1
19 6500826	FIELD COIL	G1815C	1	47	6820252	GEAR CASE COVER		1
-- 3500831	FIELD COIL	G2315C	1	48	9040518	TAPPING SCREW (S) M5X18		4
20 6800826	MOTOR HOUSING	G1815C	1	49	6110070	GEAR SHAFT		1
-- 6800829	MOTOR HOUSING	G2315C	1	50	6100630	WOODRUFF KEY		1
21 6911419	NAME PLATE	G1815C	1	--	6530209	FASTEN CONNECTOR		1
-- 6911420	NAME PLATE	G2315C	1	--	9674316	LEAD WIRE		1
22 6570033	BRUSH CAP		2					
23 6540603	CARBON BRUSH SET		1					
STANDARD ACCESSORY								
24 6570052	BRUSH HOLDER		2	500	6830536	SIDE HANDLE		1
25 9040410	TAPPING SCREW (S) M4X10		2					

SERVICE NOTES:

