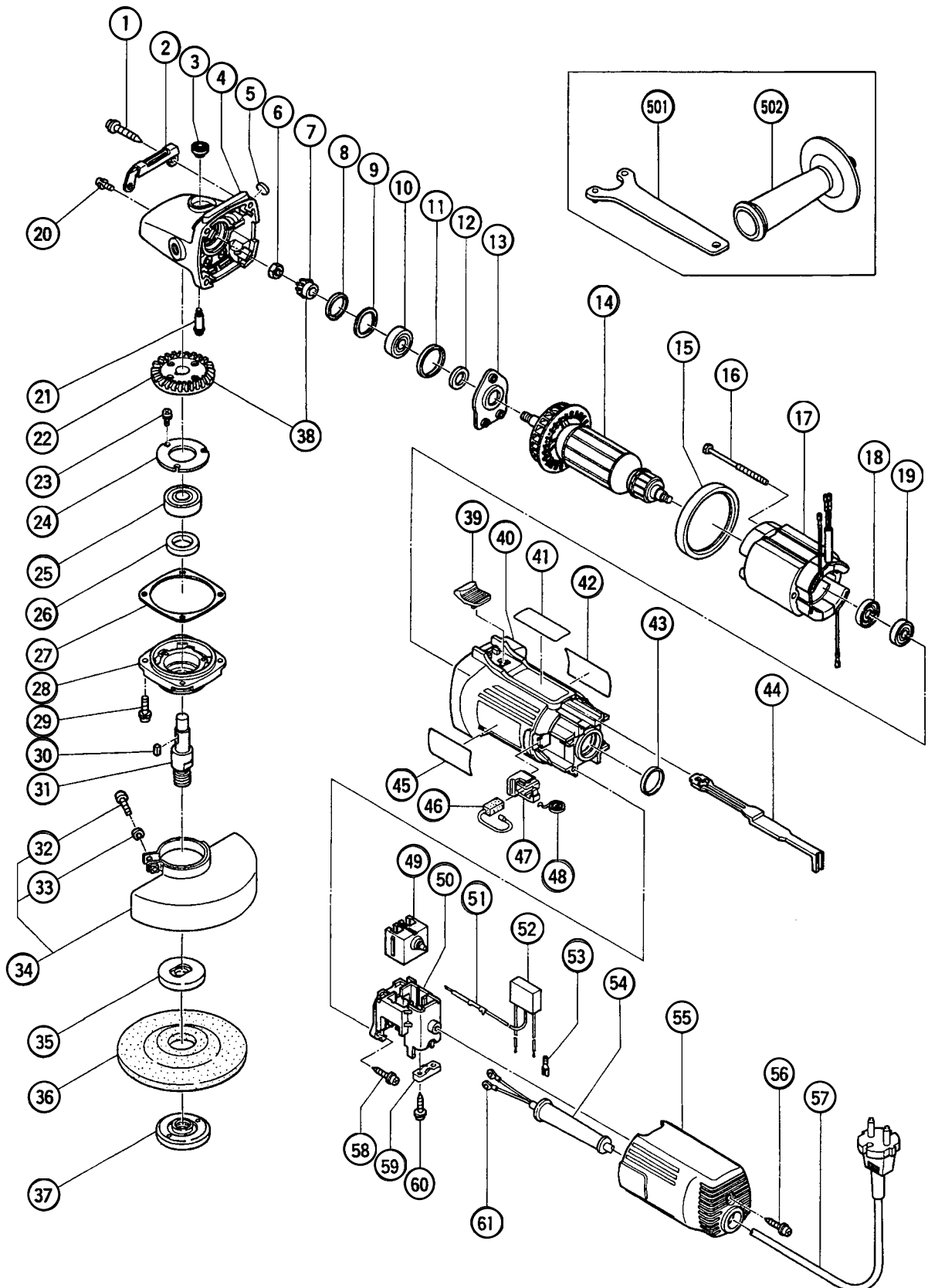


## ELECTRIC TOOL PARTS LIST

■ DISC GRINDER  
Model G 12SA2

2000・11・15  
(E1)



## PARTS

G 12SA2

ITEM NO.	CODE NO.	DESCRIPTION	NO. USED	REMARKS	
1	937-807	TAPPING SCREW D5X25	4		
2	319-315	GUARD PLATE	1		
3	301-944	PUSHING BUTTON	1		
4	308-542	GEAR COVER ASS'Y	1	INCLUD.3,5,21	
5	315-049	FELT WASHER	1		
6	301-941	SPECIAL NUT M7	1		
7	308-541	PINION	1		
8	308-543	SEAL RING (A)	1		
9	980-866	WASHER (C)	1		
10	629-T12	BALL BEARING 629T12DDC3PS2-L	1		
11	957-754	RUBBER RING	1		
12	994-320	FELT	1		
13	308-538	BEARING COVER	1		
*	14	360-541U	ARMATURE ASS'Y 120V	1	INCLUD.10,12,18,19
*	14	360-541E	ARMATURE 230V	1	
15	308-537	FAN GUIDE	1		
16	982-021	HEX. HD. TAPPING SCREW D4X70	2		
*	17	340-485D	STATOR 120V	1	
*	17	340-485E	STATOR 230V	1	
18	315-877	DUST SEAL	1		
19	608-VVM	BALL BEARING 608VVC2PS2L	1		
20	303-255	SEAL LOCK SCREW (W/SP. WASHER) M4X10	3		
21	301-943	LOCK PIN	1		
22	308-540	GEAR	1		
23	991-207	SEAL LOCK SCREW (W/SP. WASHER) M4X8	3		
24	936-680	BEARING COVER (B)	1		
25	620-1DD	BALL BEARING 6201DDCMPS2L	1		
26	308-546	FELT PACKING	1		
27	308-547	SEAL PACKING	1		
28	308-545	PACKING GLAND	1		
29	307-046	SEAL LOCK SCREW (W/SP. WASHER) M5X16	4		
30	944-109	FEATHER KEY 3X3X8	1		
*	31	994-301	SPINDLE (A)	1	
*	31	994-302	SPINDLE (B)	1	FOR USA,CAN
32	949-241	MACHINE SCREW M5X20 (10 PCS.)	1		
33	949-454	SPRING WASHER M5 (10 PCS.)	1		
34	315-157	WHEEL GUARD (A) ASS'Y	1	INCLUD.32,33	
*	35	937-817Z	WHEEL WASHER	1	
*	35	937-928Z	WHEEL WASHER (A) FOR D16 HOLE	1	FOR USA,CAN
36	316-821	D. C. WHEELS 115MM A36Q (25 PCS.)	1		
*	37	994-324	WHEEL NUT M14	1	
*	37	937-923P	WHEEL NUT 5/8"-11UNC	1	FOR USA,CAN
38	308-539	GEAR ASS'Y	1	INCLUD.7,22	
39	314-428	SLIDE KNOB	1		
40	319-314	HOUSING	1		
*	41		CAUTION PLATE	1	
*	42		NAME PLATE	1	
43	995-662	RUBBER RING	1		
44	319-317	SLIDE BAR	1		
45		HITACHI LABEL	1		
46	999-088	CARBON BRUSH (1 PAIR)	2		

\* : ALTERNATIVE PARTS

11 - 00

**PARTS**

ITEM NO.	CODE NO.	DESCRIPTION	NO. USED	REMARKS
47	317-810	BRUSH HOLDER	2	
48	308-536	SPRING	2	
49	319-319	PUSHING BUTTON SWITCH	1	
50	319-318	SWITCH HOLDER	1	
* 51	314-854	EARTH TERMINAL	1	FOR NOISE SUPPRESSOR
* 52	994-273	NOISE SUPPRESSOR	1	EXCEPT FOR USA,CAN
* 53	319-320	FASTON TERMINAL	2	FOR NOISE SUPPRESSOR
54	953-327	CORD ARMOR D8.8	1	
55	319-316	TAIL COVER	1	
56	307-811	TAPPING SCREW (W/FLANGE) D4X16 (BLACK)	1	
* 57	500-234Z	CORD	1	
* 57	500-439Z	CORD	1	FOR NZL
* 57	500-240Z	CORD	1	FOR USA,CAN
58	305-095	TAPPING SCREW (W/FLANGE) D4X20	2	
59	937-631	CORD CLIP	1	
60	984-750	TAPPING SCREW (W/FLANGE) D4X16	2	
61	980-063	TERMINAL	2	

**STANDARD ACCESSORIES**

G 12SA2

ITEM NO.	CODE NO.	DESCRIPTION	NO. USED	REMARKS
501	938-332Z	WRENCH	1	
502	994-322	SIDE HANDLE	1	

**OPTIONAL ACCESSORIES**

ITEM NO.	CODE NO.	DESCRIPTION	NO. USED	REMARKS
* 601	937-826Z	WASHER NUT	1	
* 601	938-318	WASHER NUT	1	FOR USA,CAN
602	937-825Z	RUBBER PAD	1	
* 602	938-317	RUBBER PAD	1	FOR USA,CAN
* 603	994-312	WHEEL WASHER (C) FOR D20 HOLE	1	FOR USA,CAN
* 604	310-338	SUPER WASHER	1	EXCEPT FOR USA,CAN
605	314-095	SANDING DISCS 115MM C-P16 (10 PCS.)	1	
606	314-096	SANDING DISCS 115MM C-P20 (10 PCS.)	1	
607	314-097	SANDING DISCS 115MM C-P24 (10 PCS.)	1	
608	314-098	SANDING DISCS 115MM C-P30 (10 PCS.)	1	
609	314-099	SANDING DISCS 115MM C-P36 (10 PCS.)	1	
610	314-100	SANDING DISCS 115MM C-P40 (10 PCS.)	1	
611	314-101	SANDING DISCS 115MM C-P50 (10 PCS.)	1	
612	314-102	SANDING DISCS 115MM C-P60 (10 PCS.)	1	
613	314-103	SANDING DISCS 115MM C-P80 (10 PCS.)	1	
614	314-104	SANDING DISCS 115MM C-P100 (10 PCS.)	1	
615	314-105	SANDING DISCS 115MM C-P120 (10 PCS.)	1	

\* : ALTERNATIVE PARTS