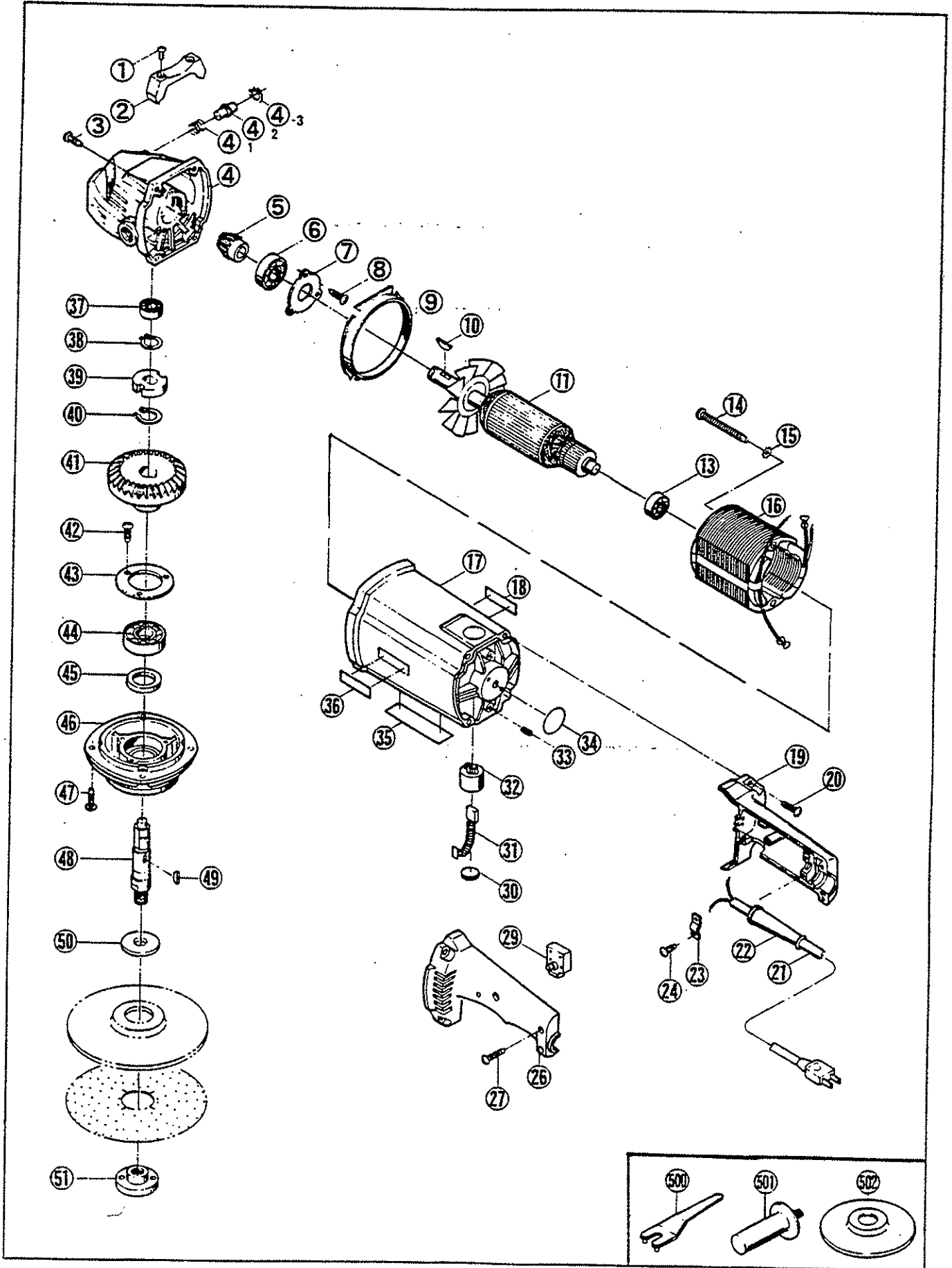


# DISC SANDER

## G-1250SC



## PARTS LIST FOR AFTER SALES SERVICE MODEL G1250SC

REF	PART NO.	DESCRIPTION	QTY	REF	PART NO.	DESCRIPTION	QTY
	9000512	PHILLIPS PAN SCREW M5X12	2	30	6570070	BRUSH CAP	2
2	6370076	TOOL REST	1	31	6540123	CARBON BRUSH SET	1
3	9060525	TAPPING SCREW (B) M5X25	4	32	6570007	BRUSH HOLDER	2
4	6080751	GEAR CASE	1	33	9280508	CLAMP SCREW M6X8	2
4-1	6180090	COMPRESSION SPRING	1	34	6930057	DUST SEAL	1
4-2	6120087	STOPPER PIN	1	35	6911035	NAME PLATE	1
4-3	6100079	RETAINING RING R-13	1	36	6920004	"RYOBI" MARK #9	1
5	6200063	PINION GEAR	1	37	9846000	BALL BEARING #6000LLB	1
6	9856200	BALL BEARING #6200LLU	1	38	9511400	RETAINING RING S-14	1
7	6150425	BEARING CLAMP	1	39	6220026	STOPPER BLOCK	1
8	9040410	TAPPING SCREW (S) M4X10	1	40	9511500	RETAINING RING S-15	1
9	6490118	FAN CASING	1	41	6200065	BEVEL GEAR	1
10	6100225	WOODRUFF KEY	1	42	9040510	TAPPING SCREW (S) M5X10	3
11	6030684	ARMATURE	1	43	6150641	BEARING CLAMP	1
13	9850608	BALL BEARING #608LLU	1	44	9846202	BALL BEARING #6202LLB	1
14	9060565	TAPPING SCREW (B) M5X65	2	45	6900233	FELT WASHER	1
15	9610500	TOOTHED LOCK WASHER M5	2	46	6820245	GEAR CASE COVER	1
16	6500626	FIELD COIL	1	47	9040516	TAPPING SCREW (S) M5X16	4
17	6800578	MOTOR HOUSING	1	48	6110067	GEAR SHAFT	1
18	6920004	"RYOBI" MARK #9	1	49	6100630	WOODRUFF KEY	1
19	6830543	HANDLE (A)	1	50	6900223	COLLAR	1
20	9060525	TAPPING SCREW (B) M5X25	4	51	6072873	CLAMP NUT	1
21	6520331	CORD ASS'Y AWG18X2X2	1	—	6560024	TERMINAL	4
2*	6560047	CORD HOLDER	1				
2.	6560067	CORD CLAMP	1				
24	9060416	TAPPING SCREW (B) M4X16	2	STANDARD ACCESSORIES			
26	6830546	HANDLE (B)	1	500	6240403	LOCK-NUT WRENCH 35	1
27	9060418	TAPPING SCREW (B) M4X18	3	501	6830536	SIDE HANDLE	1
29	6550010	TRIGGER SWITCH	1	502	6940484	4 1/2" SANDING PAD	1

**SERVICE NOTES:**