

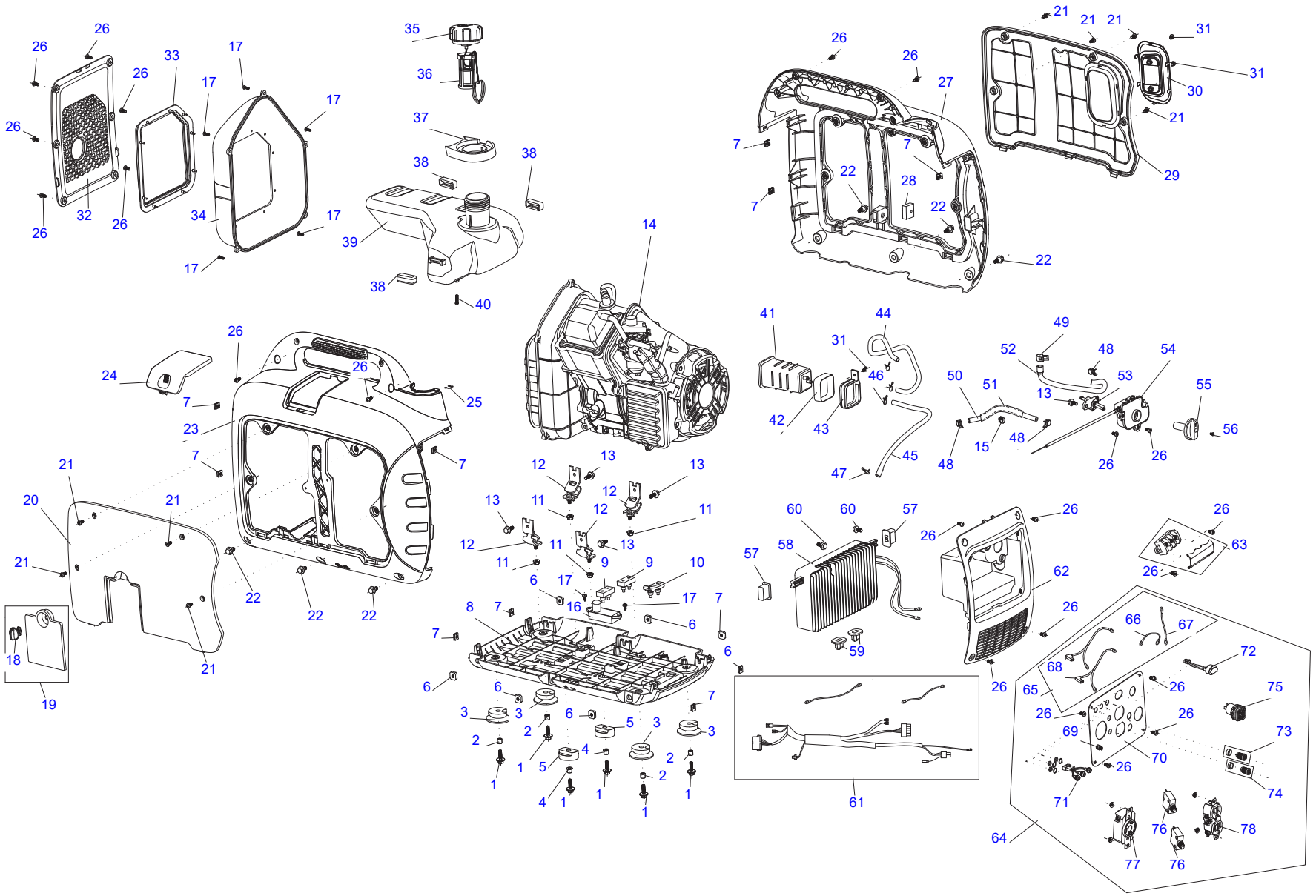


GP3000i Portable Generator
Parts Manual

Model G0071290

The information in this manual is accurate based on products produced at the time of publication. The manufacturer reserves the right to make technical updates, corrections, and product revisions at any time without notice.

www.generac.com or 1-888-GENERAC



009510

ITEM	PART NO.	DESCRIPTION	QTY
1	10000021818	FLANGED HEX HEAD BOLT	6
2	10000021860	BUSHING	4
3	10000021777	RUBBER FOOT	4
4	10000021852	BUSHING	2
5	10000021768	VIBRATION PAD	2
6	10000021861	SQUARE NUT	6
7	10000021769	CLIP NUT	10
8	10000021842	FRAME FLOOR	1
9	10000021778	RUBBER BUFFER	2
10	10000021839	RUBBER BUFFER	1
11	10000021871	NUT (M6)	4
12	10000021890	FRAME SHOCK ABSORBER SEAT	4
13	0G84420194	BOLT (M5X12MM)	5
14	10000017443	ENGINE 149CC	1
15	0J4968	BOLT (M5X16MM) (NOT SHOWN)	1
16	10000021900	IGNITION MODULE	1
17	10000021809	TAPPING SCREW (ST4.0X15MM)	7
18	10000021843	OIL COVER KNOB	1
19	10000021853	OIL ACCESS COVER	1
20	10000021903	LEFT SIDE COVER	1
21	10000021845	SCREW	8
22	10000021904	FLANGED HEX HEAD BOLT	6
23	10000021863	LEFT SIDE SHELL	1
24	10000021886	SPARK PLUG COVER	1
25	10000021905	CLIP	1
26	10000021873	SCREW (M5X12MM)	22
27	10000021888	RIGHT SIDE SHELL	1
28	10000021906	RUBBER BUFFER	1
29	10000021914	RIGHT SIDE COVER	1
30	10000021889	PLATE, HANDLE STOP	1
31	10000021867	SCREW	3
32	10000021855	EXHAUST END PANEL	1
33	10000021848	EXHAUST PORT	1
34	10000021907	MUFFLER COVER	1
35	10000021849	FUEL CAP	1
36	10000021917	FUEL FILTER	1
37	10000021859	FUEL SPILL COVER	1

ITEM	PART NO.	DESCRIPTION	QTY
38	10000021930	RUBBER TANK CUSHION	3
39	10000021922	FUEL TANK	1
40	10000021950	FUEL FILTER	1
41	10000021931	CARBON CANISTER	1
42	10000021933	RUBBER BUFFER	1
43	10000021960	CARBON CANISTER SUPPORT	1
44	10000021894	CARBON CANISTER HOSE	1
45	10000021918	CARBON CANISTER HOSE	1
46	048031B	HOSE CLAMP	3
47	10000021919	HOSE CLAMP	1
48	0J88870130	HOSE CLAMP	3
49	0H9838C110	HOSE CLAMP	1
50	10000021875	FUEL HOSE	1
51	10000021934	THERMAL WRAP	1
52	10000021876	FUEL HOSE	1
53	10000021970	FUEL SWITCH	1
54	10000021953	CHOKE SWITCH	1
55	10000021971	FUEL SWITCH KNOB	1
56	10000021895	SCREW (M4X18MM)	1
57	10000021896	RUBBER BUFFER	2
58	10000021941	INVERTER	1
59	10000021942	RUBBER BUFFER	2
60	10000021973	BOLT (M5X10MM)	2
61	10000021879	WIRE HARNESS	1
62	10000021974	CONTROL PANEL HOUSING	1
63	10000021976	TERMINAL BLOCK	1
64	10000021938	ASSEMBLY, CONTROL PANEL	1
65	A0000221178	KIT, GROUND LEAD	1
66	ORDER ITEM 65	GROUND LEAD	1
67	ORDER ITEM 65	GROUND LEAD	1
68	ORDER ITEM 65	GROUND LEAD	1
69	A0000221172	GROUND BOLT (M4X6MM)	1
70	ORDER ITEM 64	FACE PLATE	1
71	10000021956	LED INDICATOR LIGHT	1

ITEM	PART NO.	DESCRIPTION	QTY
72	10000021957	SHUT OFF SWITCH	1
73	10000022000	PARALLEL SOCKET (RED)	1
74	10000021948	PARALLEL SOCKET (BLACK)	1
75	10000022020	USB/AUX DC PORT	1
76	0H0265C	CIRCUIT BREAKER (20A)	2
77	G068868	RECEPTACLE (125V L5-30R TWISTLOCK)	1
78	0H2928	RECEPTACLE (120V 20A DUPLEX)	1

NOTE: To order replacement engine parts, see manual 10000023723.

Part No. 10000017695 Rev. B 03/10/2020
 ©2020 Generac Power Systems, Inc.
 All rights reserved.
 Specifications are subject to change without notice.
 No reproduction allowed in any form without prior written
 consent from Generac Power Systems, Inc.

GENERAC®

Generac Power Systems, Inc.
 S45 W29290 Hwy. 59
 Waukesha, WI 53189
 1-888-GENERAC (1-888-436-3722)
www.generac.com