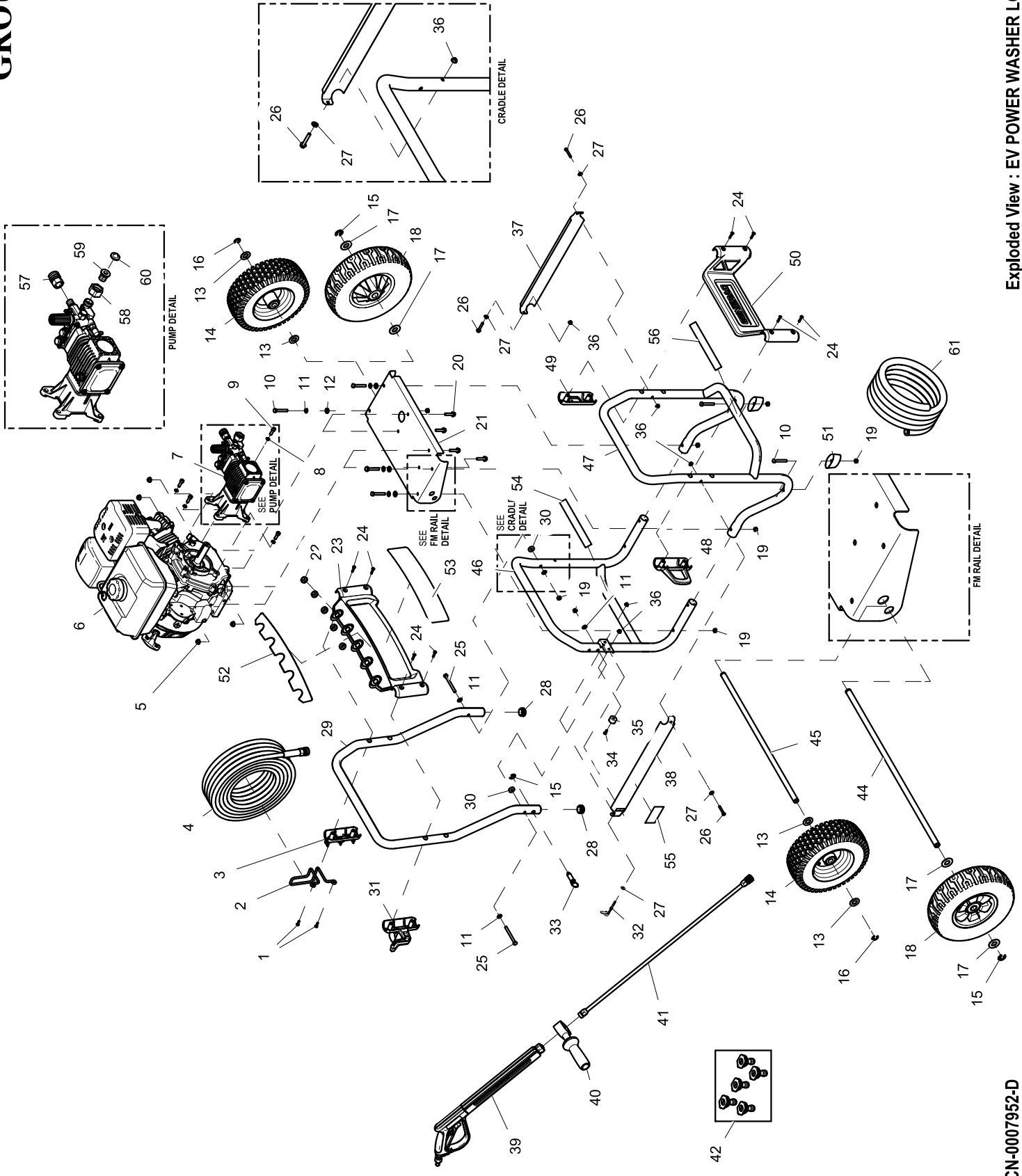


GROUP EV



EXPLODED VIEW: EV POWER WASHER LG GP

DRAWING #: 0K1743

GROUP EV

| ITEM | PART# | QTY. | DESCRIPTION |
|------|---------|------|--|
| 1 | 0J1545 | 2 | SCREW BHSP M6-2.5 X 19MM |
| 2 | 0J0211 | 1 | HOOK GP HOSE |
| 3 | 0H9637 | 1 | BILLBOARD CAP W/HOSE HOOK GP |
| 4 | OK1775A | 1 | HOSE 3/8" X 35' W/QC DISK (3500 PSI) |
| | OK1775B | 1 | HOSE 3/8" X 50' W/QC DISK (4000 PSI) |
| 5 | 067989 | 4 | NUT HEX FL WHIZ M8-1.25 |
| 6 | OK1045 | 1 | ENGINE 302CC (3500 PSI) |
| | 0J7442 | 1 | ENGINE 420CC (4000 PSI) |
| | OK2293 | 1 | ENGINE 420CC (4000 PSI INT) |
| 7 | OK1669 | 1 | PUMP TRIPLEX 3.3 GPM (3500 PSI INT) |
| | 0J0480 | 1 | PUMP,TRIPLEX (4000 PSI) |
| 8 | 092479 | 4 | WASHER LOCK M8 RIBBED |
| 9 | 0J3315 | 4 | SCREW SHC M8-1.25 X 25 C8.8 ZP |
| 10 | 0J3317 | 6 | SCREW HHC M8-1.25X55 8.8 BL ZP |
| 11 | 022145 | 8 | WASHER FLAT 5/16-M8 ZINC |
| 12 | 0D4417 | 4 | WASHER,RUBBER 1/4" X 1/8" THK |
| 13 | 045900 | 4 | WASHER FLAT 3/4 ZINC (4000 PSI) |
| 14 | 0H9590 | 2 | WHEEL, 12"OD PNUM 3/4"OD AXLE (4000 PSI) |
| 15 | 0J2686 | 3 | RING, SNAP - 5/8" TYPE E (3500 PSI) |
| | 0J2686 | 1 | RING, SNAP - 5/8" TYPE E (4000 PSI) |
| 16 | 0J3255 | 2 | RING, SNAP - 3/4" TYPE E (4000 PSI) |
| 17 | 022247 | 4 | WASHER FLAT 5/8 ZINC (3500 PSI) |
| 18 | 0H9589B | 2 | WHEEL 10"DIA X 3" (3500 PSI) |
| 19 | 049820 | 8 | NUT HEX LOCK M8-1.25 NY INS |
| 20 | 089230 | 4 | SCREW HHFC M8-1.25 X 35 G8.8 |
| 21 | 0J6839 | 1 | FM RAIL-ENGINE GP SERIES |
| 22 | 0J3079 | 5 | GROMMET-NOZZLE |
| 23 | 0H9620 | 1 | BILLBOARD-UPPER GP SERIES |
| 24 | 0J1544 | 8 | SCREW BHSP M6-2.5 X 25MM |
| 25 | 061906 | 2 | SCREW HHC M8-1.25 X 85 C8.8 |
| 26 | 051753 | 3 | SCREW HHC M6-1.0 X 40 C8.8 FTH |
| 27 | 022473 | 4 | WASHER FLAT 1/4-M6 ZINC |
| 28 | 0H9731 | 2 | TUBE END CAP - 1-1/4" OD TUBE |
| 29 | 0H9601 | 1 | TUBE-GP HANDLE |
| 30 | 0J0688 | 2 | WASHER, NYLON .325 X .875 X .25 |
| 31 | 0J0141 | 1 | BILLBOARD CAP W/GUN HOOK |
| 32 | 0J2422 | 1 | ASSY-WIRE PULL START CORD |
| 33 | 0J0050 | 1 | PULL PIN ASSEMBLY |
| 34 | 0J5086 | 1 | SCREW BHSC M6-1.0 X 20 ZP |
| 35 | 0J5254 | 1 | BUMPER-HANDLE STOP |
| 36 | 0E8388 | 5 | NUT HEX FL WHIZ M6-1.0 |
| 37 | 0J5156A | 1 | BRACKET-SIDE W/O CUTOUT |
| 38 | 0J5156B | 1 | BRACKET-SIDE W/CUTOUT |
| 39 | OK6183 | 1 | GUN 4200PSI PROF W/QC |
| 40 | 0J1052 | 1 | GUN SUPPORT HANDLE |
| 41 | 0H9625A | 1 | LANCE ASSY-33" LONG SS |
| 42 | 0H9617D | 1 | KIT-NOZZLE (3500 PSI) |
| | 0H9617E | 1 | KIT-NOZZLE (4000 PSI) |
| 44 | 0H9603B | 1 | AXLE, 5/8" DIA (3500 PSI) |
| 45 | 0J3252 | 1 | AXLE, 3/4" DIA (4000 PSI) |
| 46 | 0H9765 | 1 | WLDMNT, GP TUBE FRAME RR |
| 47 | 0H9592 | 1 | WLDMNT, GP TUBE FRAME FT |
| 48 | 0J0140 | 1 | BILLBOARD CAP W/WAND HOOK GP |
| 49 | 0J0139 | 1 | BILLBOARD CAP W/O HOOK GP |
| 50 | 0H9623 | 1 | BILLBOARD-LOWER GP SERIES |
| 51 | 0G9055A | 2 | FOOT |
| 52 | OK1437 | 1 | DECAL-NOZZLE ID LG PRO (3500/4000 PSI) |
| 53 | OK1440A | 1 | DECAL-GENERAC (3500 PSI) |
| | OK1440B | 1 | DECAL-GENERAC (4000 PSI) |
| 54 | 0J3376 | 1 | DECAL QUICK START GP |
| 55 | 0J3452 | 1 | DECAL-ON/OFF |
| 56 | 0J3375 | 1 | DECAL QUICK START GP |
| 57 | 0H9568 | 1 | COUPLING-FEMALE QDISK |
| 58 | 0J1445 | 1 | NUT-GARDEN HOSE INLET |
| 59 | 0J1443 | 1 | NIPPLE-GARDEN HOSE INLET |
| 60 | 0J1444 | 1 | SCREEN-GARDEN HOSE INLET |
| 61 | 0J5710 | 1 | DETERGENT HOSE AND FILTER |