



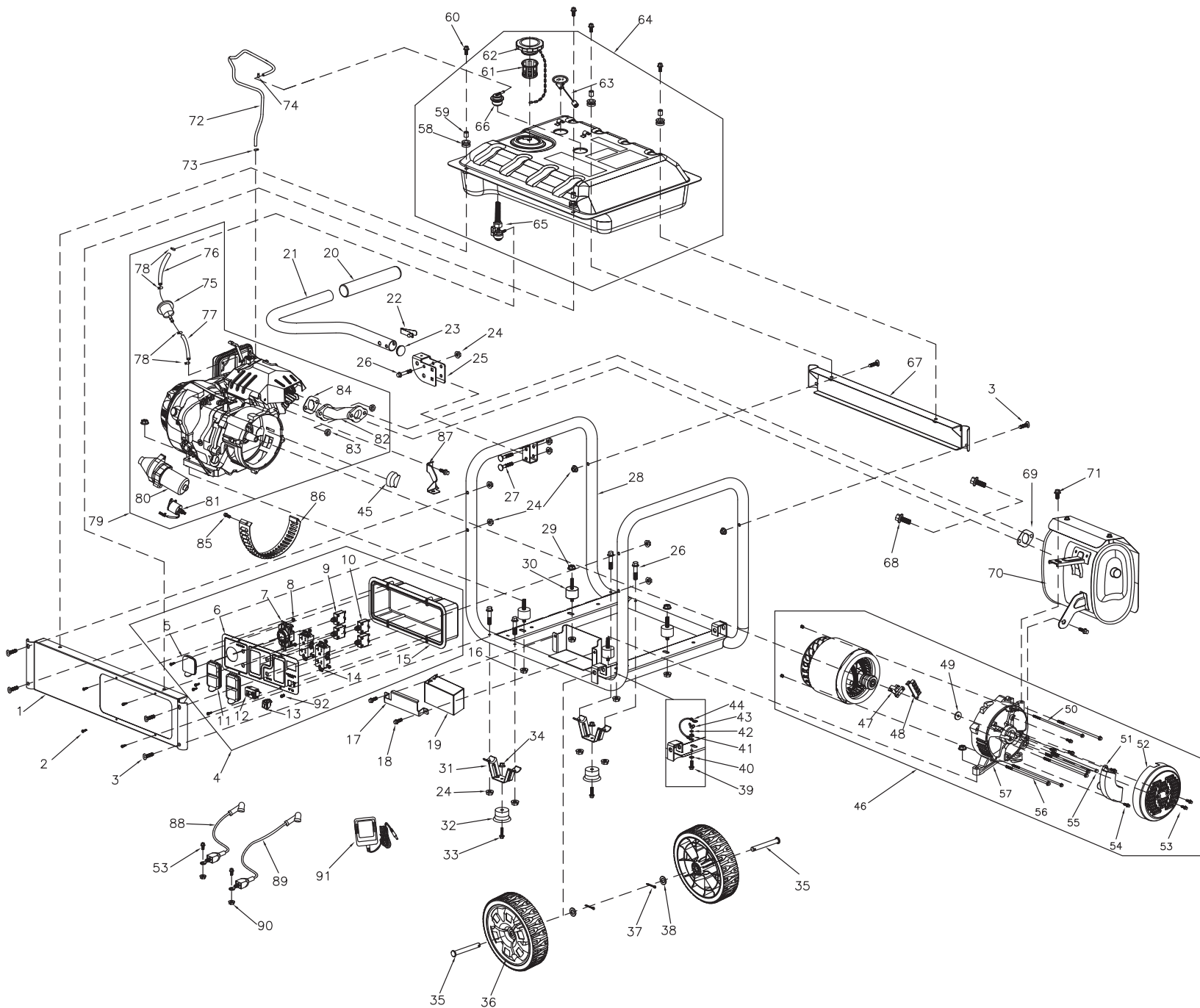
# Parts Manual

**GP6500E 389CC** (Models 0059414 & 0065151)

## **NOTICE!**

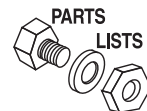
The information in this manual is known to be accurate as of the date of release shown on the cover. However, engineering changes can occur without notice. To obtain the proper parts, please be sure to use the serial number of the unit being serviced when ordering from this manual. Always refer to any parts notes and changes before ordering. All other parts not shown in this manual can be found on Generac's exploded view drawings online on GENservice at [www.generac.com](http://www.generac.com).

2



GP6500E

# GP6500E



Item	Part #	Qty	Description
1	0H97480ST03	1	FRAME RAIL
2	0H91980159	8	PAN HEAD SCREW (ST4.0X16)
3	0H1780	6	CURVED HEAD BOLT (M8X40)
4	0H9775E	1	CONTROL PANEL ASSEMBLY
5	0G9391	1	OUTLET COVER
6	0J4536A	1	CONTROL PANEL FACE PLATE
7	0G8758	1	RECEPTACLE (30A, 125V/250V)
8	0J86620108	6	NUT (M4)
9	0K20680112	2	CIRCUIT BREAKER (30A)
10	0H0265C	2	CIRCUIT BREAKER (20A)
11	0G9392	2	OUTLET COVER
12	0G8321	1	HOUR METER
13	0J0251	1	ENGINE SWITCH
14	0D4968	2	RECEPACLE (20A,125V)
15	0G9756A	1	CONTROL PANEL BACK COVER
16	067989	4	NUT (M8)
17	0J06940ST15	1	BATTERY BRACKET COVER
18	0G84420194	3	BOLT (M6X12)
19	0G9449	1	BATTERY
20	0G8442C113	1	HANDLE GRIP
21	0H97560ST15	1	HANDLE
22	0J5347	1	SNAP BUTTON
23	0H9760	1	HANDLE PLUG
24	067989	9	NUT (M8)
25	0H97670ST15	1	HANDLE BRACKET
26	073144	5	BOLT (M8X45)
27	0H1781	2	CARRIAGE HEAD BOLT (M8X46)
28	0J86620100	1	FRAME
29	0J4029	4	NUT (M10X1.25)
30	0K09150110	4	RUBBER VIBRATION MOUNT
31	0K0097	2	BENT FOOT FRAME
32	0K0099	2	RUBBER FOOT
33	0K0100	2	BOLT (M6X28)
34	0K0105	2	NUT (M6)
35	0H0204	2	AXLE PIN
36	0L1366	2	WHEEL ASSEMBLY
37	0D4999	2	COTTER PIN
38	022304	2	FLAT WASHER (13x2)
39	0J35220156	1	BOLT (M6X20)
40	0K0093	1	SPECIAL LOCK WASHER
41	0G84420196	1	NUT (M6)
42	0J47870118	1	FLAT WASHER
43	0K0094	1	NUT (M6)

Item	Part #	Qty	Description
44	0K20670114	1	GROUND WIRE ASSEMBLY
45	0J86620104	1	BAFFLE
46	0K9546	1	ROTOR AND STATOR ASSEMBLY
47	0H0919	1	BRUSH ASSEMBLY
48	0J83630111	1	WIRE CONNECTOR TERMINAL
49	0J86620102	1	FLAT WASHER (M10X4)
50	0L11890110	1	STATOR BOLT (M5X198)
51	0H2579B	1	AUTOMATIC VOLTAGE REGULATOR
52	0H3049	1	GENERATOR END COVER
53	0J4967	8	BOLT (M5X12)
54	0J4968	3	BOLT (M5X16)
55	0L11890111	1	ROTOR BOLT (M10X250)
56	0J6071	4	STATOR BOLT (M6X160)
57	0H91980171	1	REAR BEARING HOUSING
58	0H1411B	4	FUEL TANK RUBBER MOUNT
59	0H1610A	4	ANTI-CRUSH LINING INSERT
60	0E9507C	4	BOLT (M8X20)
61	0H1326	1	FUEL FILTER
62	0H0958	1	FUEL CAP
63	0H9005	1	FUEL GAUGE
64	0H7510ABSRV	1	FUEL TANK (7 GALLON)
65	0J0974	1	FUEL SHUTOFF VALVE
66	0J7921	1	ROLL-OVER VALVE
67	0H9749AST03	1	BACK FRAME RAIL
68	0E9507B	2	BOLT (M8X25)
69	0J4691	1	MUFFLER EXHAUST GASKET
70	0J8672	1	MUFFLER
71	0E9470	2	BOLT (M8X16)
72	0K0091	1	PREFORMED HOSE (ROLL-OVER VALVE TO AIR BOX)
73	0K97920112	1	HOSE CLAMP
74	0J35220174	1	HOSE CLAMP
75	0G9757A	1	FUEL HOSE (8X55)
76	0G9914	1	FUEL FILTER
77	0G9757B	1	FUEL HOSE (8X80)
78	0J25910115	4	HOSE CLAMP
79	0G8442E	1	ENGINE 389CC
80	0H98380101	1	STARTER MOTOR
81	0H98380102	1	STARTER RELAY
82	0J4535A	1	EXHAUST MANIFOLD
83	0J35220161	2	NUT (M8)
84	0G9028	1	CYLINDER EXHAUST GASKET
85	0J00620100	1	BOLT (M5X10)



# GP6500E

Item	Part #	Qty	Description
86	0H9761	1	ALTERNATOR SCROLL
87	0G8442C112	1	AIR CLEANER BRACKET
88	0J4157B	1	BATTERY CABLE (POSITIVE, RED)
89	0J4157A	1	BATTERY CABLE (NEGATIVE, GREEN)
90	0G84420271	2	NUT (M5)
91	0G5744	1	BATTERY CHARGER
92	0J4959	1	12VDC CHARGER INPUT ASSEMBLY

©2015 Generac Power Systems, Inc. All rights reserved.  
Specifications are subject to change without notice  
No reproduction allowed in any form without prior written consent from Generac Power Systems, Inc.