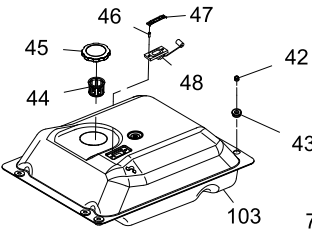
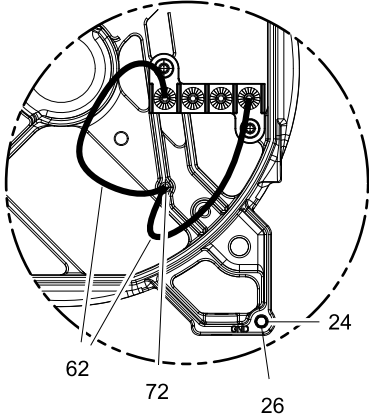


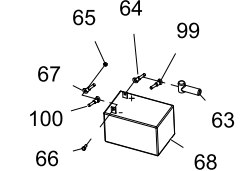
ROUTE HOSE THROUGH CLIP
DETAIL OF FRONT OF ENGINE



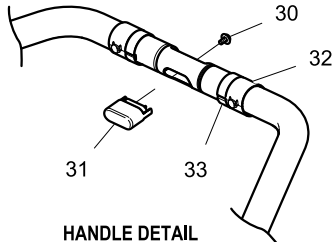
DETAIL OF GAS TANK



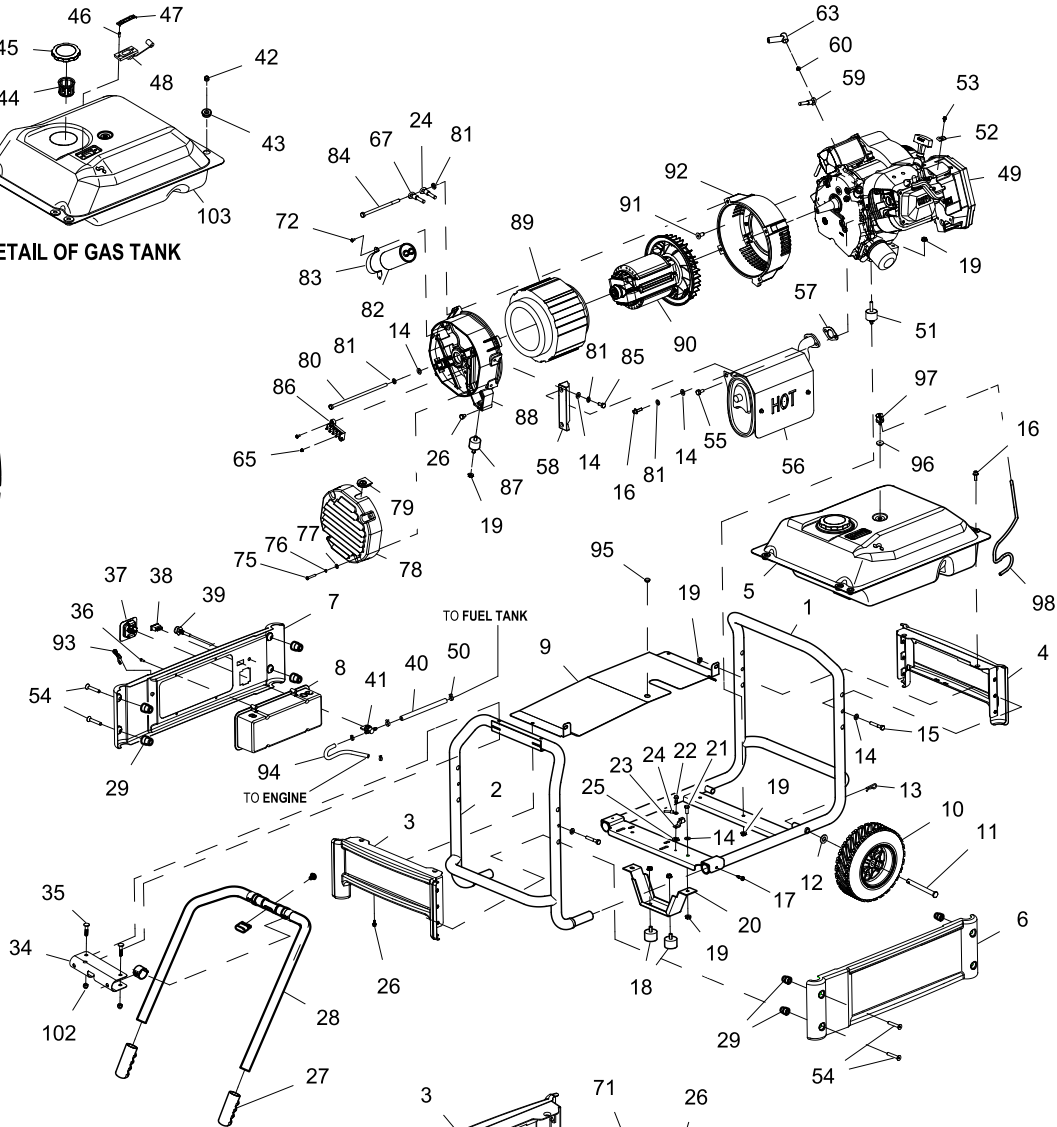
JUMPER WIRE DETAIL
ON THE BEARING CARRIER



DETAIL OF BATTERY



HANDLE DETAIL

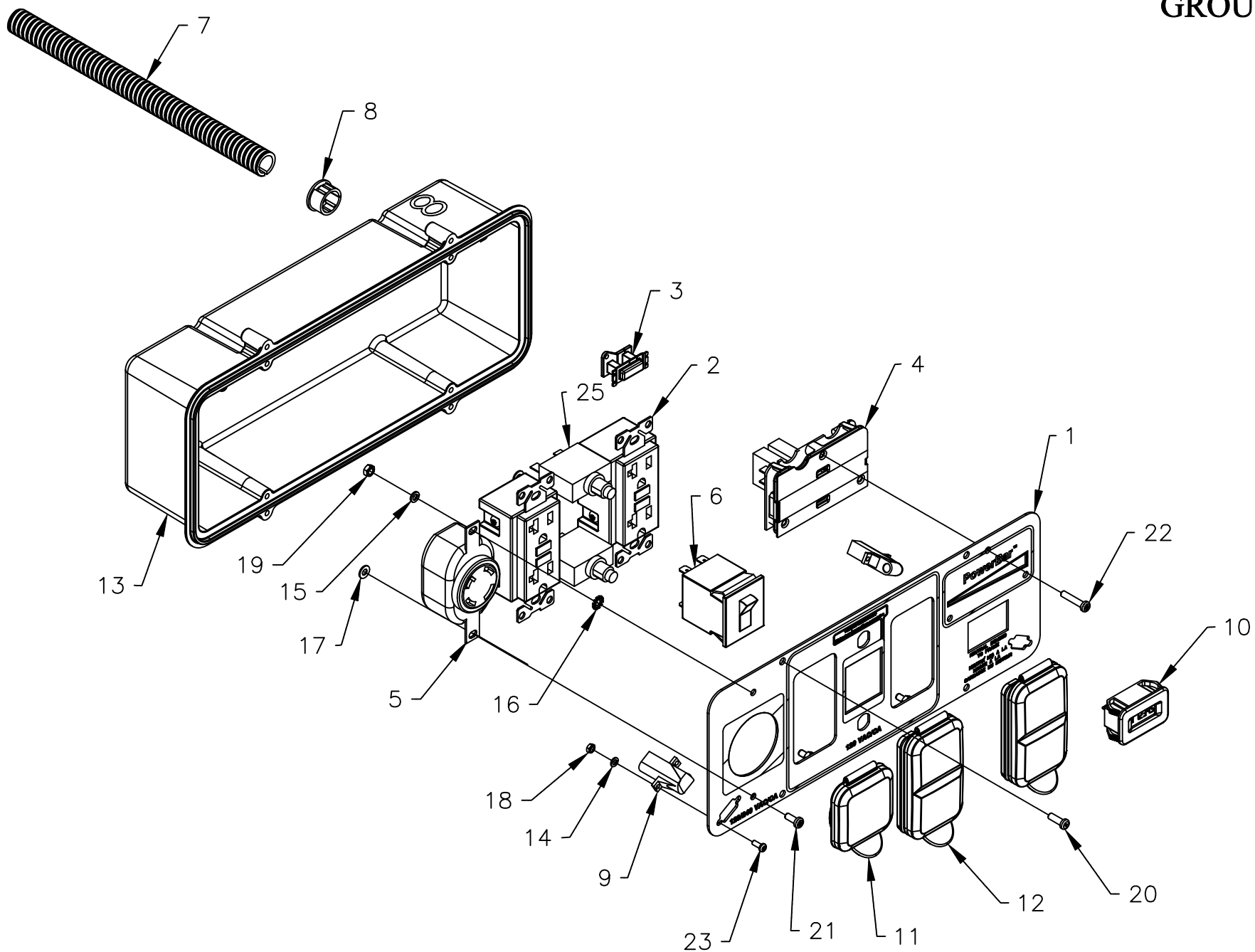


DETAIL OF BACK PANEL

GROUP EV

ITEM	PART	QTY.	DESCRIPTION
1	0J4654	1	FRAME BASE ASSY XG8000
2	0J4653	1	FRAME END ASSY XG8000
3	0H2392C	1	ASSY.END PNL ALT. END
4	0H2392A	1	ASSY.END PANEL XG8
5	0H2564A	1	ASSY.FUEL TANK XG8 9GAL CARB
6	0H2394B	1	PANEL, SIDE
7	0H2394A	1	PANEL,C/PNL SIDE
8	0H5285C	1	ASSY RECP PANEL XG8KW CAL/CSA
9	0H6371	1	HEAT SHIELD, XG6,5-8
10	0H4420	2	WHEEL,9.5",1/2" AXLE,XG RALLYE
11	0H1129	2	AXLE, PIN, 1/2 IN, XG
12	087171	2	WASHER FLAT 1/2 SS
13	0H3443	2	COTTER HAIRPIN 2.56 X
14	022145	11	WASHER FLAT 5/16-M8 ZINC
15	051731	4	SCREW HHC M8-1.25 X 50 C8.8
16	0G5445	6	SCREW HHTT M8-1.25 X 20
17	0H5030	2	SCREW HHSD 1/4-14 X 7/8 BZ
18	0H3590	2	VIB MNT 38.4 X 30.5 X M8-1.25
19	067989	12	NUT HEX FL WHIZ M8-1.25
20	0H0720	1	BRACKET, BENT, FOOT, GX
21	039253	2	SCREW HHC M8-1.25 X 20 C8.8
22	0G2018	1	SCREW HHSD 1/4-14 X 7/8
23	055414	1	LUG SLDLSS #2-#8 X 17/64 CU
24	0742600186	1	GROUND WIRE BRG CAR-LUG 4KW
25	0A1658	1	WASHER LOCK SPECIAL 1/4"
26	090388	5	SCREW HHTT M6-1.0 X 12 ZINC
27	0G8465	2	GRIP NUBBED 1-1/4"X4-3/8"
28	0J1208B	1	ASSY HANDLE XG
29	0H5307	8	SPACER, SELF LOCATING
30	0F2659	1	SCREW HHTT M3-0.5 X 6 BP
31	0H9527	1	ASSY BUTTON HANDLE XG
32	0H2205	2	BEARING,HANDLE,XG
33	0H9525	2	BEARING EXTERNAL HANDLE XG
34	0H9529	1	BRACKET, HANDLE
35	0H6887	2	BOLT CARR 5/16-18X2 BLCK ZINC
36	0G8382	4	SCREW PPPH #8-16 X .66" BZC
37	0H2142	1	VALVE HOLDER,FUEL SHUTOFF
38	0G9549	1	SWITCH SPDT (ON)-OFF-ON 20A
39	0G9560A	1	CABLE CHOKE PORT NOM 382
40	0H3455E	1	FUEL HOSE, 160 MM LONG
41	0H3419	1	VALVE,FUEL SHUTOFF
42	0H1411	5	RUBBER MOUNT, 10.8 ID X 9 TALL
43	0H1610	4	INSERT, ANTI-CRUSH FOR TANKS
44	0H1326	1	FILTER, FUEL
45	0H0958	1	ASSY GAS CAP SEALED - CHROME
46	0H1357	2	SCREW PFHM M5-0.8 X 12
47	0H1359	1	PLATE, FUEL GAGE
48	0H1345	1	FUEL GAGE, 153 MM LONG ARM
49	0J2533	1	410CC ENGINE XG 8000E
50	048031G	4	CLAMP HOSE BAND .41
51	0H2043	2	VIB MOUNT 35 X 12 X M8-1.25
52	0E4190	1	CLAMP, 3/16" COATED CABLE

ITEM	PART	QTY.	DESCRIPTION
53	0F5579	1	SCREW HHC SHLDR M5-0.8X20 G8.8
54	0H6059	8	SCREW FHSC M8-1.25 X 60 BZC
55	0G3730	2	SCREW SHC M8-1.25 X 20 SEMS
56	0H3034	1	ASSY MUFFLER 410CC XG 8KW
57	090239	1	GASKET, EXHAUST
58	0H2856	1	BRACKET,MOUNTING,MUFFLER,410
59	0742600191	1	WIRE ASSEMBLY
60	0B2236	1	NUT HEX LOCK M6-1 NY INS
61	0H0228C	1	WIRE ASSY RED SOL TO SOL
62	0H4768B	2	JUMPER WIRE ASSEMBLY, 5.00" N
63	0G6392	4	BOOT, VINYL STARTER-SOLENOID
64	0742600189	1	WIRE ASSEMBLY
65	0H3535	6	NUT FLANGE M5-0.8 NYLOCK
66	052618	2	SCREW HHC M5-0.8 X 12 C8.8
67	0742600193	1	WIRE ASSEMBLY
68	0G9449	1	BATTERY 12V10AH SEALED
69	0H2764	1	BRACKET,BATTERY,HOLD DOWN
70	092079	2	SCREW HHTT M6-1.0 X 25 BP
71	086729	1	CONTACTOR, STARTER SOLENOID
72	0F4795	6	SCREW PPHM M4-0.7 X 10 SEMS
73	089338	2	NUT HEX LOCK #8-32 NY INS BRS
74	027529	2	NUT HEX LOCK 1/4-20 NY INS
75	020911	4	SCREW PPHM M5-0.8 X 30 ZINC
76	022152	4	WASHER LOCK #10
77	023897	4	WASHER FLAT #10 ZINC
78	0G5002A	1	COVER ALTERNATOR INLET
79	0G5206	1	GROMMET WIRE SLEEVE
80	075431	1	SCREW IHHC 5/16-24 X 8-1/2 G5
81	022129	9	WASHER LOCK M8-5/16
82	0G5958	1	CAP MOTOR RUN 47MF 440V
83	0G5088	1	CLAMP, CAPACITOR
84	0G5148	4	SCREW IHHC M8-1.25 X 140 G8.8
85	0C3181	2	SCREW BHSC M8-1.25 X 20 SS
86	0H3935	1	ASSY TERM BLK M5-0.8X20
87	085652	2	VIB MNT 25.0 X 31.8 X M8-1.25
88	0H1551	1	BEARING CARRIER, PORTABLE
89	0H2734C	1	STR-230-8.0AD1 XP PORT,CHI-1
90	0G5211C	1	RTR-230-8.0AD1
91	030205	4	SCREW FHSC 3/8-16 X 3/4 W/LOCK
92	0G2397	1	HOUSING ENGINE ADAPTER
93	0H0025	1	ASSY 12VDC POWER JACK W/LUGS
94	0H5762	1	FUEL LINE FORMED VLV TO ENG XG
95	023484E	1	BUSHING SNAP SB-687-8
96	0H3631	1	GROMMET, ROLLOVER VALVE
97	0H3630	1	ROLLOVER VALVE
98	0J1699	1	EVAP HOSE FORMED
99	0742600192	1	WIRE ASSEMBLY
100	0742600188	1	WIRE ASSEMBLY
101	0H4218	1	HARNESS, ENGINE, GH410 ES
102	0G8486	2	CAP NUT 5/16-18 ZBC
103	0H2565A	1	WELDMNT,FUEL TANK XG 9GAL CARB



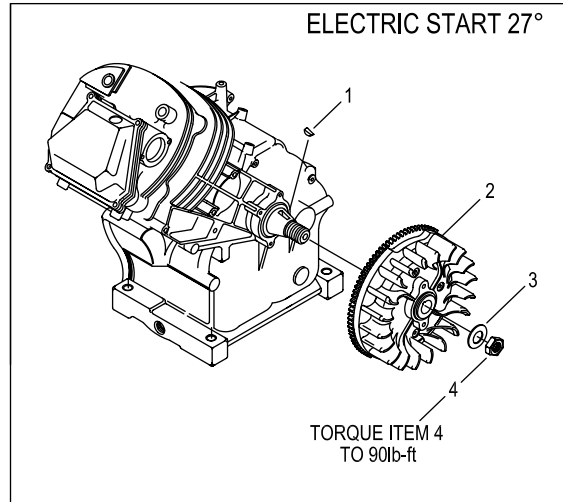
EXPLODED VIEW: PANEL PARTS
DRAWING #: 0H5299

GROUP

APPLICABLE TO: 005847-0

ITEM	PART #	QTY.	DESCRIPTION
1	0H5280C	1	ASSY, RECEPTACLE PANEL
2	0H3346	2	OUTLET, 20A GFCI DUPLEX BLACK
3	0D4804B	1	TRANSFORMER IDLE CURRENT
4	0H3362D	1	POWERBAR ASSY 8.0KW
5	0H2929	1	OUTLET 30A 125/250V L1430R SPECGR
6	0H5283B	1	CB, 250W 30A M-SERIES CSA
7	077043B	1	FLEX GUARD 13MM IS X 203MM
8	0A5489	1	SNAP BUSHING 0.75 OPEN
9	0H3345	2	120V LED ASSY
10	0G8321	1	HOUR METER
11	0G9391	1	COVER 30A 120/240V OUTLET
12	0G9392	2	COVER 20A 120V GFCI/DUPLEX
13	0G9756	1	RECEPTACLE PANEL STORM GEN
14	022155	4	WASHER LOCK #6
15	022264	6	WASHER LOCK #8-M4
16	026579	1	WASHER SHAKEPROOF EXT #8 STEEL
17	043180	6	WASHER, FLAT, M4
18	051714	4	HEX NUT M3-0.5 G8 CLEARZINC
19	051715	9	HEX NUT M4-0.7
20	0G8382	4	SCREW PHTT #8-16 X 1/2" BZC
21	0G9060	2	SCREW PPHM M4-0.7 X 10 BZC
22	0H3968	3	SCREW PPHM M4-0.7 X 20 BKZ
23	0H3969	4	SCREW PPHM M3-0.5 X 8 BKZ
24	0H5276	1	WIRE HARNESS XG8KW CAL/CSA (NOT SHOWN)
25	0H0265C	2	CB 20A 1P 120V CUL/CSA

FLYWHEEL OPTION
ENGINE PRODUCTION LEVEL 10E



1	082774	1	KEY, WOODRUFF 4 x 19D
2	091222C	1	ASSY, FLYWHEEL W/RING GEAR 27 DEGREE
3	067198N	1	WASHER, BELV-20 X 2.2
4	067890	1	NUT, HEX – FLYWHEEL