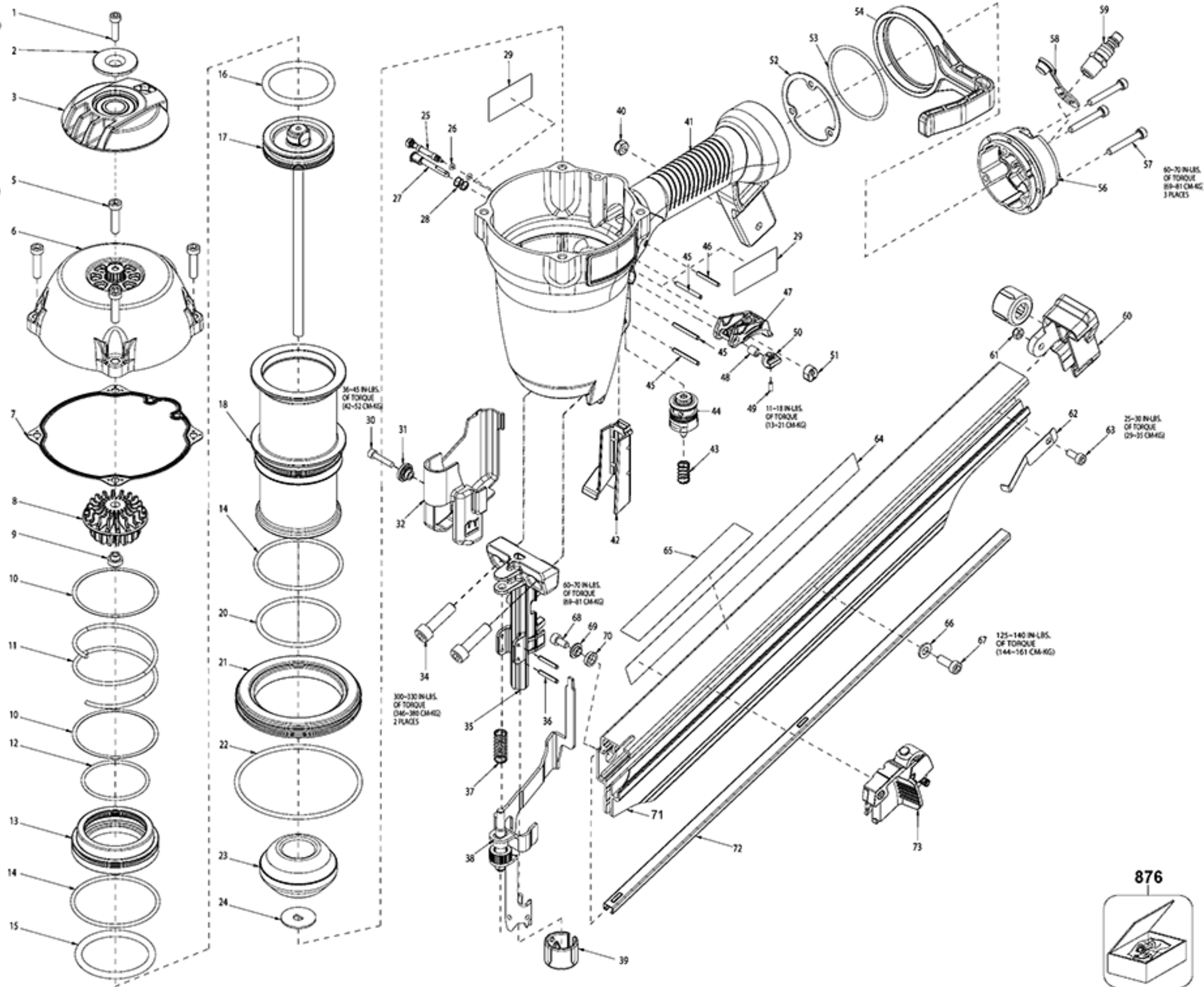


60-70 IN. LBS.
OF TORQUE
(69-81 CM-KG)

SE

125-140 IN. LBS.
OF TORQUE
(144-161 CM-KG)
4 PLACES



Part List

#1 - SOC HD CAP M5 X20,Qty Req in Model:
Part #: N494651 **Description:** SOC HD CAP M5 X20

#2 - EXHAUST COVER BUSH.,Qty Req in Model:
Part #: 9R199767 **Description:** EXHAUST COVER BUSH.

#3 - EXHAUST DEFLECTOR,Qty Req in Model:
Part #: 9R194985 **Description:** EXHAUST DEFLECTOR

#5 - BOLT,Qty Req in Model:
Part #: MSC6100-25 **Description:** BOLT

#6 - FRAME CAP,Qty Req in Model:
Part #: 9R195509 **Description:** FRAME CAP

#7 - GASKET,Qty Req in Model:
Part #: 9R199772 **Description:** GASKET

#7 - GASKET,Qty Req in Model:
Part #: 9R205703 **Description:** GASKET

#8 - HEAD VALVE SEAL,Qty Req in Model:
Part #: 9R195500 **Description:** HEAD VALVE SEAL

#9 - FLANGE NUT,Qty Req in Model:
Part #: 9R194940 **Description:** FLANGE NUT

#10 - HEAD VALVE PLATE,Qty Req in Model:
Part #: 9R194952 **Description:** HEAD VALVE PLATE

#11 - HEAD VALVE SPRING,Qty Req in Model:
Part #: 9R194954 **Description:** HEAD VALVE SPRING

#12 - O RING,Qty Req in Model:
Part #: 149828 **Description:** O RING

#13 - HEAD VALVE,Qty Req in Model:
Part #: 9R195501 **Description:** HEAD VALVE

#14 - O-RING,Qty Req in Model:
Part #: 184449 **Description:** O-RING

#15 - O-RING,Qty Req in Model:
Part #: 184450 **Description:** O-RING

#16 - O RING,Qty Req in Model:
Part #: 851606-S **Description:** O RING

#17 - PISTON DRIVER ASSY.,Qty Req in Model:
Part #: 9R194944 **Description:** PISTON DRIVER ASSY.

#18 - CYLINDER SLEEVE,Qty Req in Model:
Part #: 9R199768 **Description:** CYLINDER SLEEVE

#20 - O RING,Qty Req in Model:

Part #: 105815 **Description:** O RING

#21 - CYLINDER SPACER,Qty Req in Model:

Part #: 9R194948 **Description:** CYLINDER
SPACER

#22 - O-RING,Qty Req in Model:

Part #: 9R194953 **Description:** O-RING

#23 - BUMPER,Qty Req in Model:

Part #: 9R195526 **Description:** BUMPER

#24 - DRIVER GUIDE,Qty Req in Model:

Part #: 9R194950 **Description:** DRIVER GUIDE

#25 - PIN,Qty Req in Model:

Part #: 184519 **Description:** PIN

#26 - O RING,Qty Req in Model:

Part #: 9R195625 **Description:** O RING

#27 - PIN,Qty Req in Model:

Part #: 184507 **Description:** PIN

#28 - SPRING,Qty Req in Model:

Part #: 9R188850 **Description:** SPRING

#29 - LABEL,Qty Req in Model:

Part #: 9R195721 **Description:** LABEL

#30 - SCREW,Qty Req in Model:

Part #: 182237 **Description:** SCREW

#31 - COVER BUSHING,Qty Req in Model:

Part #: 9R199769 **Description:** COVER BUSHING

#32 - COVER,Qty Req in Model:

Part #: 9R194960 **Description:** COVER

#34 - SCREW,Qty Req in Model:

Part #: MSC8125-30 **Description:** SCREW

#35 - NOSE,Qty Req in Model:

Part #: 9R199774 **Description:** NOSE

#36 - PIN,Qty Req in Model:

Part #: 180475 **Description:** PIN

#37 - CONTACT ARM SPRING,Qty Req in Model:

Part #: 9R195738 **Description:** CONTACT ARM
SPRING

#38 - CONTACT ARM ASSY.,Qty Req in Model:

Part #: 9R195074 **Description:** CONTACT ARM
ASSY.

#39 - CONTACT ARM FOOT,Qty Req in Model:

Part #: 9R191793 **Description:** CONTACT ARM
FOOT

#40 - NUT,Qty Req in Model:

Part #: MHE6100-100 **Description:** NUT

#41 - FRAME OVERMOLD,Qty Req in Model:

Part #: 9R194937 **Description:** FRAME
OVERMOLD

#42 - CONTACT ARM GUIDE,Qty Req in Model:

Part #: 9R194976 **Description:** CONTACT ARM
GUIDE

#43 - TRIGGER SPRING,Qty Req in Model:

Part #: 9R195767 **Description:** TRIGGER
SPRING

#44 - VALVE,Qty Req in Model:

Part #: 9R202265-TW **Description:** VALVE

#45 - PIN,Qty Req in Model:

Part #: 174345 **Description:** PIN

#46 - SPRING PIN,Qty Req in Model:

Part #: 9R195514 **Description:** SPRING PIN

#47 - TRIGGER ASSY.,Qty Req in Model:

Part #: 9R195082 **Description:** TRIGGER ASSY.

#48 - BUSHING,Qty Req in Model:

Part #: 184508 **Description:** BUSHING

#49 - SCREW,Qty Req in Model:

Part #: 180484 **Description:** SCREW

#50 - BUTTON-MODE SWITCH,Qty Req in Model:

Part #: 9R195079 **Description:** BUTTON-MODE
SWITCH

#51 - BUTTON-TRIGGER LOCK,Qty Req in Model:

Part #: 9R195078 **Description:** BUTTON-
TRIGGER LOCK

#52 - GASKET (END CAP),Qty Req in Model:

Part #: 9R194989 **Description:** GASKET (END
CAP)

#53 - O RING,Qty Req in Model:

Part #: 9R199765 **Description:** O RING

#54 - HOOK,Qty Req in Model:

Part #: 9R194977 **Description:** HOOK

#56 - END CAP,Qty Req in Model:

Part #: 9R199776 **Description:** END CAP

#57 - SOCKET HEAD CAP SCRE,Qty Req in Model:

Part #: 9R195515 **Description:** SOCKET HEAD
CAP SCRE

#58 - COVER,Qty Req in Model:

Part #: 184432 **Description:** COVER

#59 - FITTING,Qty Req in Model:

Part #: 9R195624 **Description:** FITTING

#60 - END CAP-MAGAZINE,Qty Req in Model:

Part #: 9R194965 **Description:** END CAP-MAGAZINE

#61 - LOCK NUT,Qty Req in Model:

Part #: MHE5080-100 **Description:** LOCK NUT

#62 - REAR PLATE,Qty Req in Model:

Part #: 9R194964 **Description:** REAR PLATE

#63 - SCREW,Qty Req in Model:

Part #: 9R199720 **Description:** SCREW

#63 - SCREW,Qty Req in Model:

Part #: MSC5080-12 **Description:** SCREW

#64 - WARNING LABEL,Qty Req in Model:

Part #: 9R195727 **Description:** WARNING LABEL

#65 - WARNING LABEL,Qty Req in Model:

Part #: 9R195722 **Description:** WARNING LABEL

#66 - WASHER,Qty Req in Model:

Part #: MPW6.3 **Description:** WASHER

#67 - SCREW,Qty Req in Model:

Part #: MSC6100-16 **Description:** SCREW

#68 - SOCKET HEAD CAP SCRE,Qty Req in Model:

Part #: 9R195448 **Description:** SOCKET HEAD
CAP SCRE

#69 - SPACER,Qty Req in Model:

Part #: 9R194992 **Description:** SPACER

#70 - RUBBER SPACER,Qty Req in Model:

Part #: 9R195000 **Description:** RUBBER SPACER

#71 - MAGAZINE,Qty Req in Model:

Part #: 9R195813 **Description:** MAGAZINE

#72 - STEEL CHANNEL,Qty Req in Model:

Part #: 9R194966 **Description:** STEEL CHANNEL

#73 - PUSHER ASSEMBLY,Qty Req in Model:

Part #: 9R194993 **Description:** PUSHER
ASSEMBLY

#876 - DRIVER ASSEMBLY KIT,Qty Req in Model:

Part #: FR350B-DK **Description:** DRIVER
ASSEMBLY KIT

#876 - OVERHAUL KIT,Qty Req in Model:

Part #: FR350B/FC350BOK**Description:** OVERHAUL KIT

- SPRING,Qty Req in Model:

Part #: 188850 **Description:** SPRING

- **SCREW**,Qty Req in Model:

Part #: MSC5080-20 **Description:** SCREW

- **VALVE**,Qty Req in Model:

Part #: TVA15 **Description:** VALVE