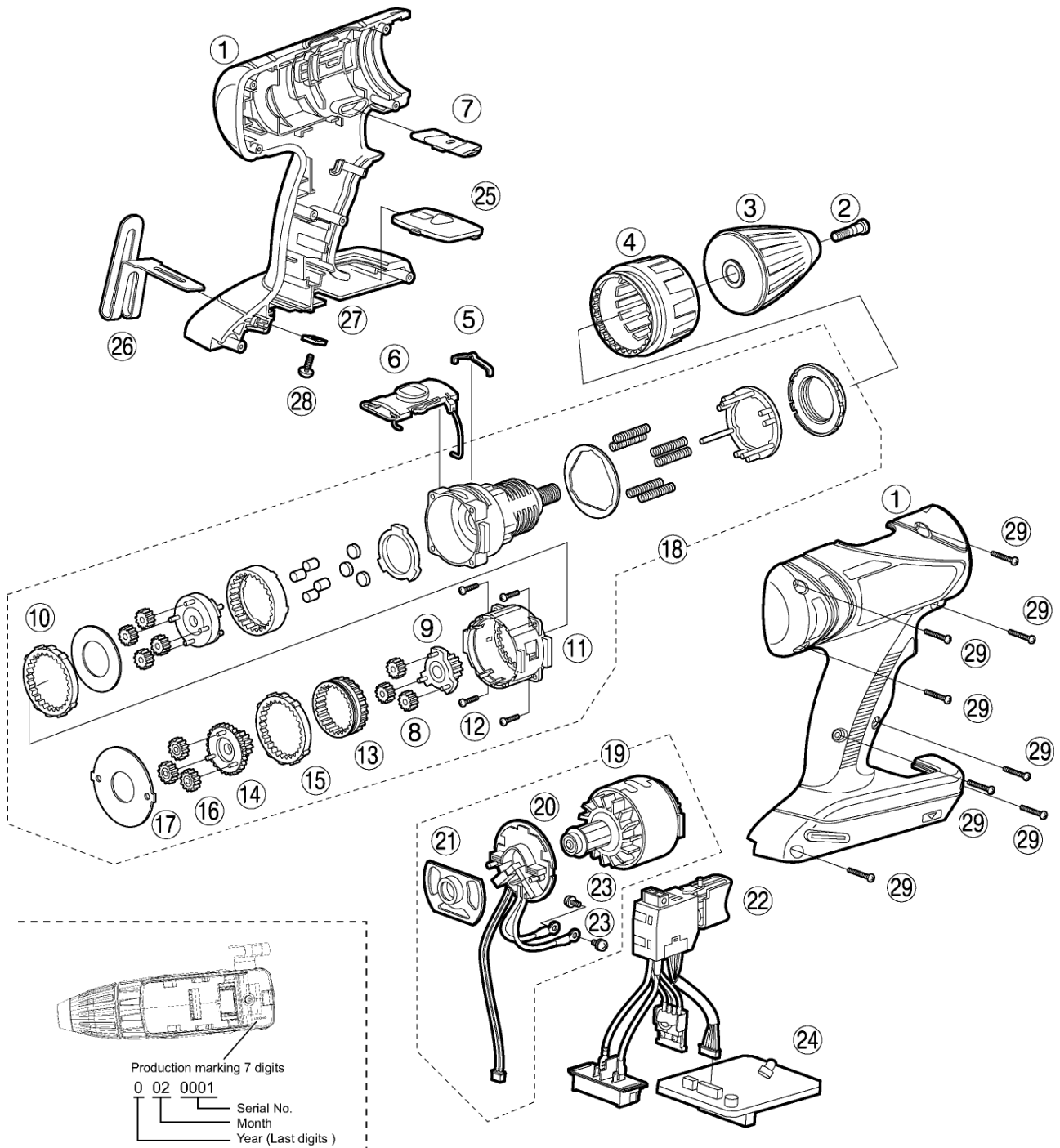


Model No. : EY7940 Exploded View for EY7940



Model No. : EY7940 Parts List

Safety	Ref. No.	Part No.	Part Name & Description	Q'ty	Remarks
EY7940					
	1	WEY7940K3078	HOUSING AB SET	1	
	2	WEY6450L6806	CHUCK FASTENING SCREW	1	
	3	WEY7441K7917	KEYLESS CHUCK	1	
	4	WEY7940K3227	CLUTCH HANDLE	1	
	5	WEYT107L0457	CLICK SPRING A	1	
	6	WEY7460H3237	H/L CHANGE HANDLE	1	
	7	WEY7460H3248	F/R SELECTOR HANDLE	1	
	8	WEY7441L1348	PLANET GEAR	6	(3PCS/PK)
	9	WEY7441L1118	CARRIER	1	
	10	WEY7441L0268	STOPPER	1	
	11	WEY7441L1768	GEAR CASE	1	
	12	WEY7940K9628	TAPPING SCREW	4	(K3-12)
	13	WEY7441L1458	RING GEAR A	1	
	14	WEY7441L1128	CARRIER B	1	
	15	WEY7441L1468	RING GEAR B	1	
	16	WEY7940L1368	PLANET GEAR B	3	(3PCS/PK)
	17	WEY7441L0888	THRUST PLATE	1	(ϕ 37.8)
	18	WEY7940L4057	GEAR BOX BLOCK	1	
	19	WEY7441L1007	MOTOR ASSEMBLY	1	
	20	WEY7441L2577	MOTOR BRUSH ASSEMBLY	1	
	21	WEY7441L0127	FIXING PLATE	1	
	22	WEY7441L2007	SWITCH ASSEMBLY	1	
	23	WEY7441L6028	SCREW	2	(K3-6)
	24	WEY7441L2117	CONTROL PCB	1	
	25	WEY7460K3958	OPERATION PANEL	1	
	26	WEY7543K3187	PLATE HOOK	1	
	27	WEY7441L6487	NUT	1	(M4)
	28	WEY7441K6217	SCREW	1	(4*14)
	29	WEY7441K9038	TAPPING SCREW	8	(K3-20)
	-	WEY9633K7019	TOOL CASE	1	
	-	WEY7441K8108	OPERATING INSTRUCTIONS	1	