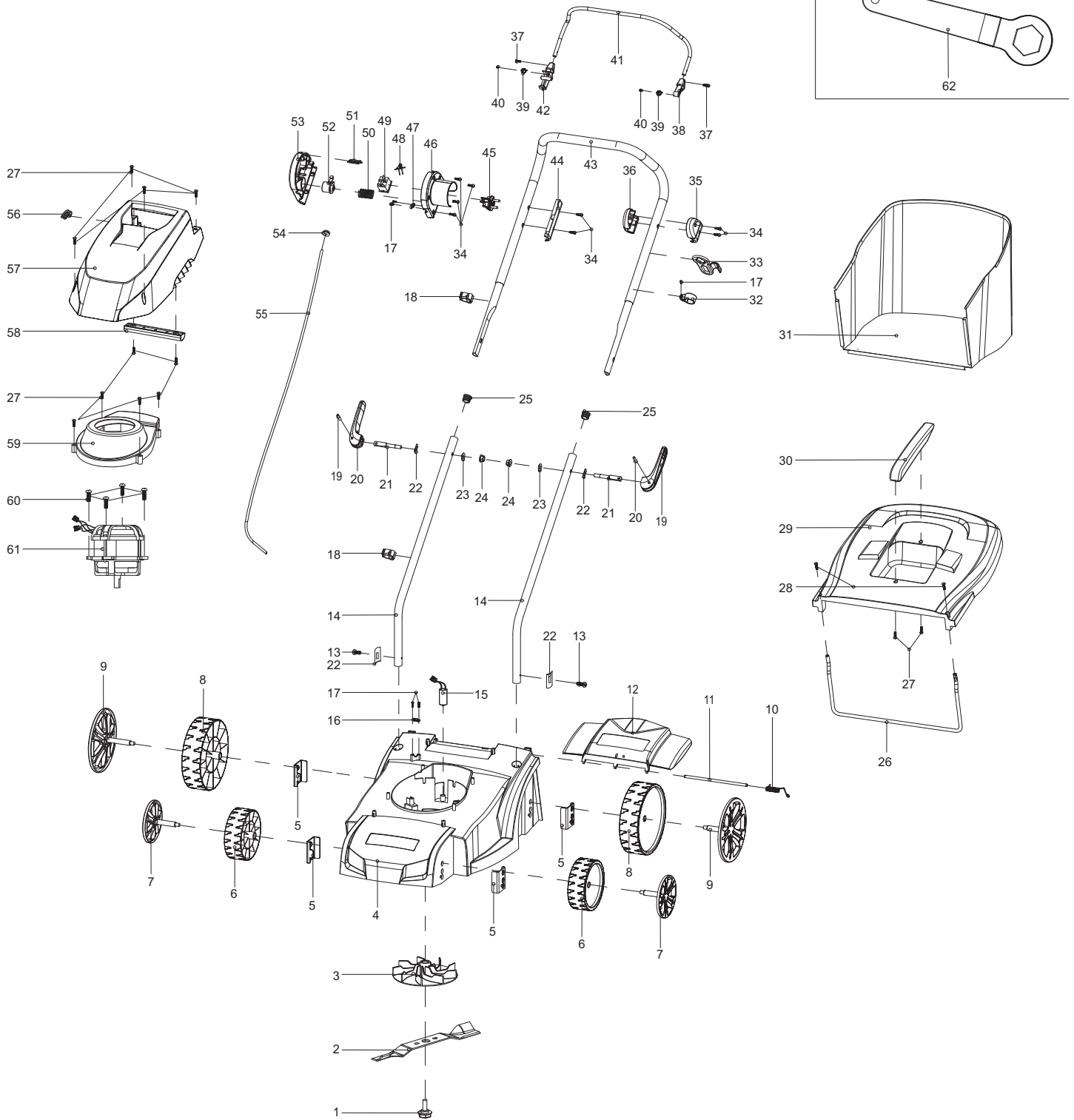


ELM3310, ELM3710,  
ELM4110, ELM4610, ELM4611

1

EM-33,37; ELM3310,3710  
EM-33,37; ELM3310,3710  
EM-33,37; ELM3310,3710  
EM-33,37; ELM3310,3710



ELM3310, ELM3710,  
ELM4110, ELM4610, ELM4611

1

EM-33,37; ELM3310,3710  
EM-33,37; ELM3310,3710  
EM-33,37; ELM3310,3710  
EM-33,37; ELM3310,3710



| Seite / Page | Pos. | ELM3310 | ELM3710 | Teil-Nr.<br>Part No.<br>No. de pièce<br>No. de pieza | Hinweise<br>Notes<br>Renseign.<br>Nota | Bezeichnung                | Spezifikation<br>Specification | Description             | Désignation                  | Denominación             |
|--------------|------|---------|---------|--|--|----------------------------|--------------------------------|-------------------------|------------------------------|--------------------------|
| 1            | 1    | 1       | 1       | 671 001 008  |  | MESSERSCHRAUBE             | M10x1.35x35                    | SCREW                   | VIS                          | TORNILLO                 |
| 1            | 2    | 1       |         | 671 001 422  |  | MESSER                     | 330x40x3mm                     | BLADE                   | LAME                         | CUCHILLA ESTÁNDAR        |
| 1            | 2    |         | 1       | 671 001 414  |  | MESSER                     | 330x40x3mm                     | BLADE                   | LAME                         | CUCHILLA ESTÁNDAR        |
| 1            | 3    | 1       | 1       | 671 492 001  |  | MESSERHALTER               |                                | BLADE PLATE WITH FAN    | MOYEU                        | SOPORTE DE LA CUCHILLA   |
| 1            | 4    | 1       |         | 671 439 001  |  | GEHÄUSE BLAU               | MAKITA                         | DECK BLUE               | CHÂSSIS BLEU                 | CAJA AZUL                |
| 1            | 4    |         | 1       | 671 436 001  |  | GEHÄUSE BLAU               | MAKITA                         | DECK BLUE               | CHÂSSIS BLEU                 | CAJA AZUL                |
| 1            | 5    | 4       | 4       | 671 014 150  |  | GEWINDEPLATTE              |                                | THREAD PLATE            | PLAQUE                       | PLACA                    |
| 1            | 6    | 2       | 2       | 671 421 001  |  | RAD                        | 5"                             | WHEEL                   | ROUE                         | RUEDA                    |
| 1            | 7    | 2       | 2       | 671 001 188  |  | RADKAPPE                   | 5"                             | WHEEL COVER WITH SHAFT  | CHAPEAU DE MOYEU             | CAPERUZA DE RUEDA        |
| 1            | 8    | 2       | 2       | 671 419 001  |  | RAD                        | 7"                             | WHEEL                   | ROUE                         | RUEDA                    |
| 1            | 9    | 2       | 2       | 671 001 189  |  | RADKAPPE                   | 7"                             | WHEEL COVER WITH SHAFT  | CHAPEAU DE MOYEU             | CAPERUZA DE RUEDA        |
| 1            | 10   | 1       | 1       | 671 011 121  |  | DREHFEDER                  |                                | TORSION SPRING          | RESSORT DE TENSION           | RESORTE DE TORSIÓN       |
| 1            | 11   | 1       |         | 671 010 260  |  | ACHSE                      |                                | SHAFT                   | AXE                          | EJE                      |
| 1            | 11   |         | 1       | 671 001 027  |  | ACHSE                      |                                | SHAFT                   | AXE                          | EJE                      |
| 1            | 12   | 1       |         | 671 438 001  |  | HECKKLAPPE                 |                                | DECK LID                | HAYON                        | PORTÓN TRASERO           |
| 1            | 12   |         | 1       | 671 422 001  |  | HECKKLAPPE                 |                                | DECK LID                | HAYON                        | PORTÓN TRASERO           |
| 1            | 13   | 2       | 2       | 671 001 054  |  | SCHRAUBE SELBSTSCHNEIDEN D | 5x12                           | SELF-TAPPING SCREW      | VIS DE FORAGE                | TORNILLO PERFORADOR      |
| 1            | 14   | 2       | 2       | 671 001 421  |  | HOLM, UNTERTEIL            |                                | HANDLE, LOWER PART      | MANCHERON, PARTIE INFÉRIEURE | MANILLAR, PARTE INFERIOR |
| 1            | 15   | 1       |         | 671 001 004  |  | KONDENSATOR                | 16µF                           | CAPACITOR               | CONDENSATEUR                 | CONDENSADOR              |
| 1            | 15   |         | 1       | 671 001 007  |  | KONDENSATOR                | 18µF                           | CAPACITOR               | CONDENSATEUR                 | CONDENSADOR              |
| 1            | 16   | 1       | 1       | 671 001 023  |  | KABELKLEMME                |                                | CABLE HOLDER            | CRAMP                        | COLLIER DE SERRAGE       |
| 1            | 17   | 5       | 5       | 671 001 003  |  | SCHRAUBE SELBSTSCHNEIDEN D | 4x12                           | SELF-TAPPING SCREW      | VIS DE FORAGE                | TORNILLO PERFORADOR      |
| 1            | 18   | 2       | 2       | 671 001 051  |  | KABELKLIPP                 |                                | CABLE CLIP              | CLIP DE CÂBLE                | CLIP PARA CABLE          |
| 1            | 19   | 2       | 2       | 671 090 040  |  | ZYLINDERSTIFT              | φ5.3x20                        | CYLINDRICAL PIN         | GOUPILLE CYLINDRIQUE         | PASADOR CILÍNDRICO       |
| 1            | 20   | 2       | 2       | 671 431 001  |  | VERSTELLGRIFF              |                                | SHIFT HANDLE            | POIGNÉE DE RÉGLAGE           | AGARRE AJUSTABLE         |
| 1            | 21   | 2       | 2       | 671 001 466  |  | SCHRAUBE                   | M6x60                          | TIGHTEN LOCKING BOLT    | VIS                          | TORNILLO                 |
| 1            | 22   | 4       | 4       | 671 001 420  |  | BEFESTIGUNGSBLECH          |                                | FIXING PLATE            | TÔLE DE FIXATION             | CHAPA DE FIJACIÓN        |
| 1            | 23   | 2       | 2       | 671 007 007  |  | SCHEIBE                    | φ8                             | WASHER                  | RONDELLE                     | ARANDELA                 |
| 1            | 24   | 2       | 2       | 671 005 016  |  | 6KT-MUTTER                 | M6                             | HEX. LOCK NUT           | ECROU                        | TUERCA                   |
| 1            | 25   | 2       | 2       | 671 001 198  |  | ROHRSTOPFEN                | φ19mm                          | TUBE PLUGS              | BOUCHON DE TUBE              | TAPÓN DE TUBO            |
| 1            | 26   | 1       |         | 671 001 424  |  | RAHMEN                     |                                | GRASS CATCHER BRACKET   | CADRE                        | MARKO                    |
| 1            | 26   |         | 1       | 671 001 417  |  | RAHMEN                     |                                | GRASS CATCHER BRACKET   | CADRE                        | MARKO                    |
| 1            | 27   | 12      | 12      | 671 001 047  |  | SCHRAUBE SELBSTSCHNEIDEN D | 4.2x15                         | SELF-TAPPING SCREW      | VIS DE FORAGE                | TORNILLO PERFORADOR      |
| 1            | 28   | 2       | 2       | 671 002 007  |  | SCHRAUBE                   | M4x12                          | TRIGGER SCREW           | VIS                          | TORNILLO                 |
| 1            | 29   | 1       |         | 671 440 001  |  | KORB, OBERTEIL             |                                | GRASS-BOX, UPPER        | SAC, PARTIE                  | CESTO, SUPERIOR          |
| 1            | 29   |         | 1       | 671 424 001  |  | KORB, OBERTEIL             |                                | GRASS-BOX, UPPER        | SAC, PARTIE                  | CESTO, SUPERIOR          |
| 1            | 30   | 1       | 1       | 671 423 001  |  | HANDGRIFF                  |                                | HANDLE OF GRASS CATCHER | POIGNÉE                      | MANGO                    |
| 1            | 31   | 1       |         | 671 001 415  |  | GRASFANGKORB               | Nylon, 27L, MAKITA LOGO        | GRASS CATCHER           | SAC                          | CESTO                    |

ELM3310, ELM3710,  
ELM4110, ELM4610, ELM4611

1

EM-33,37; ELM3310,3710  
EM-33,37; ELM3310,3710  
EM-33,37; ELM3310,3710  
EM-33,37; ELM3310,3710



| Seite / Page | Pos. | ELM3310 | ELM3710 | Teil-Nr.<br>Part No.<br>No. de pièce<br>No. de pieza | Hinweise<br>Notes<br>Renseign.<br>Nota | Bezeichnung                      | Spezifikation<br>Specification | Description                        | Désignation                        | Denominación                  |
|--------------|------|---------|---------|--|--|----------------------------------|--------------------------------|------------------------------------|------------------------------------|-------------------------------|
| 1            | 31   |         | 1       | 671 014 140  |  | GRASFANGKORB                     | Nylon, 35L,<br>MAKITA LOGO     | GRASSCATCHER                       | SAC                                | CESTO                         |
| 1            | 32   | 1       | 1       | 671 001 083  |  | SCHELLE                          |                                | CLAMP                              | BRIDE DE FIXATION                  | ABRAZADERA                    |
| 1            | 33   | 1       | 1       | 671 001 052  |  | KABELHALTERUNG                   |                                | CABLE HOLDER                       | ATTACHE POUR<br>CÂBLES             | SOPORTE DE<br>CABLES          |
| 1            | 34   | 8       | 8       | 671 001 005  |  | SCHRAUBE<br>SELBSTSCHNEIDEN<br>D | 4x16                           | SELF-TAPPING<br>SCREW              | VIS DE FORAGE                      | TORNILLO<br>PERFORADOR        |
| 1            | 35   | 1       | 1       | 671 434 002  |  | GRIFFTRÄGER<br>LINKS             |                                | LEFT HANDLE<br>SUPPORT             | SUPPORT DE<br>POIGNÉE GAUCHE       | SOPORTE DE ASA<br>IZQUIERDO   |
| 1            | 36   | 1       | 1       | 671 434 001  |  | GRIFFTRÄGER<br>RECHTS            |                                | RIGHT HANDLE<br>SUPPORT            | SUPPORT DE<br>POIGNÉE DROITE       | SOPORTE DE ASA<br>DERECHO     |
| 1            | 37   | 2       | 2       | 671 002 025  |  | SCHRAUBE                         | M4x8                           | TRIGGER BOLT                       | VIS                                | TORNILLO                      |
| 1            | 38   | 1       | 1       | 671 279 005  |  | STECKVERBINDUN<br>G, LINKS       |                                | LEFT PLUG-IN OF<br>HANDLE          | CONNECTEUR,<br>GAUCHE              | CONEXIÓN, IZQ.                |
| 1            | 39   | 2       | 2       | 671 011 124  |  | FEDER                            |                                | SPRING                             | RESSORT                            | MUELLE                        |
| 1            | 40   | 2       | 2       | 671 001 036  |  | SCHRAUBE<br>SELBSTSCHNEIDEN<br>D | 3x10                           | SELF-TAPPING<br>SCREW              | VIS DE FORAGE                      | TORNILLO<br>PERFORADOR        |
| 1            | 41   | 1       |         | 671 001 425  |  | HEBEL,<br>MOTORBREMSE            |                                | LEVER, MOTOR<br>BRAKE              | LEVIER FREIN<br>MOTEUR             | PALANCA, FRENO<br>MOTOR       |
| 1            | 41   |         | 1       | 671 014 180  |  | HEBEL,<br>MOTORBREMSE            |                                | LEVER, MOTOR<br>BRAKE              | LEVIER FREIN<br>MOTEUR             | PALANCA, FRENO<br>MOTOR       |
| 1            | 42   | 1       | 1       | 671 429 001  |  | STECKVERBINDUN<br>G, RECHTS      |                                | RIGHT PLUG-IN OF<br>HANDLE         | CONNECTEUR,<br>DROITE              | CONEXIÓN,<br>DERECHA          |
| 1            | 43   | 1       |         | 671 001 426  |  | HOLM, OBERTEIL                   |                                | HANDLE, UPPER<br>PART              | MANCHERON,<br>PARTIE<br>SUPERIEURE | MANILLAR, PARTE<br>SUPERIOR   |
| 1            | 43   |         | 1       | 671 001 419  |  | HOLM, OBERTEIL                   |                                | HANDLE, UPPER<br>PART              | MANCHERON,<br>PARTIE<br>SUPERIEURE | MANILLAR, PARTE<br>SUPERIOR   |
| 1            | 44   | 1       | 1       | 671 428 001  |  | DRUCKPLATTE                      |                                | PRESSING PLATE<br>OF SWITCH BOX    | PLAQUE                             | PLACE                         |
| 1            | 45   | 1       | 1       | 671 001 022  |  | STECKER                          |                                | PLUG                               | PRISE                              | ENCHUFE                       |
| 1            | 46   | 1       | 1       | 671 426 002  |  | SCHALTERGEHÄUS<br>E, LINKS       |                                | SWITCH BOX, LEFT                   | CARTER                             | CÁRTER                        |
| 1            | 47   | 1       | 1       | 671 491 001  |  | ZUGENTLASTUNG<br>KABEL           |                                | STRAIN RELIEF<br>CABLE             | DÉCONTRACTION<br>CÂBLE             | CABLE DESCARGA<br>DE TRACCIÓN |
| 1            | 48   | 1       | 1       | 671 009 002  |  | KONTROLLLAMPE                    |                                | INDICATOR LIGHT                    | LMPE DE<br>CONTRÔLE                | LÁMPARA<br>INDICADORA         |
| 1            | 49   | 1       | 1       | 671 010 040  |  | SCHALTER                         |                                | SWITCH                             | INTERRUPTEUR                       | INTERRUPTOR                   |
| 1            | 50   | 1       | 1       | 671 011 079  |  | FEDER                            |                                | SPRING OF SAFETY<br>BUTTON         | RESSORT                            | MUELLE                        |
| 1            | 51   | 1       | 1       | 671 001 043  |  | LAMPENABDECKUN<br>G              |                                | LAMPSHADE                          | ABAT-JOUR                          | PANTALLA                      |
| 1            | 52   | 1       | 1       | 671 425 002  |  | SICHERHEITSTAST<br>E             |                                | SAFETY BUTTON                      | BOUCHON                            | BOTON                         |
| 1            | 53   | 1       | 1       | 671 426 001  |  | SCHALTERGEHÄUS<br>E, RECHTS      |                                | SWITCH BOX,<br>RIGHT               | CARTER                             | CÁRTER                        |
| 1            | 54   | 1       | 1       | 671 283 001  |  | KABELDURCHFÜHR<br>UNG            |                                | JACKET 1 OF<br>CABLE<br>CONNECTION | PASSE-FIL                          | BOQUILLA DE<br>CAUCHO         |
| 1            | 55   | 1       |         | 671 010 050  |  | VERBINDUNGSKAB<br>EL             | 1150mm                         | CABLE<br>CONNECTION                | CÂBLE                              | CABLE                         |
| 1            | 55   |         | 1       | 671 001 010  |  | VERBINDUNGSKAB<br>EL             | 1250mm                         | CABLE<br>CONNECTION                | CÂBLE                              | CABLE                         |
| 1            | 56   | 1       | 1       | 671 284 001  |  | KABELDURCHFÜHR<br>UNG            |                                | JACKET 2 OF<br>CABLE<br>CONNECTION | PASSE-FIL                          | BOQUILLA DE<br>CAUCHO         |
| 1            | 57   | 1       |         | 671 442 001  |  | MOTORABDECKUN<br>G               |                                | MOTOR COVER                        | COUVERCLE<br>MOTEUR                | CUBIERTA DEL<br>MOTOR         |
| 1            | 57   |         | 1       | 671 433 001  |  | MOTORABDECKUN<br>G               |                                | MOTOR COVER                        | COUVERCLE<br>MOTEUR                | CUBIERTA DEL<br>MOTOR         |
| 1            | 58   | 1       |         | 671 441 001  |  | HANDGRIFF                        |                                | HANDLE                             | POIGNÉE                            | MANGO                         |

ELM3310, ELM3710,  
ELM4110, ELM4610, ELM4611

1

EM-33,37; ELM3310,3710  
EM-33,37; ELM3310,3710  
EM-33,37; ELM3310,3710  
EM-33,37; ELM3310,3710



| Seite / Page | Pos. | ELM3310 | ELM3710 | Teil-Nr.<br>Part No.<br>No. de pièce<br>No. de pieza | Hinweise<br>Notes<br>Renseign.<br>Nota | Bezeichnung                | Spezifikation<br>Specification | Description        | Désignation      | Denominación        |
|--------------|------|---------|---------|--|--|----------------------------|--------------------------------|--------------------|------------------|---------------------|
| 1            | 58   |         | 1       | 671 432 001  |  | HANDGRIFF                  |                                | HANDLE             | POIGNÉE          | MANGO               |
| 1            | 59   | 1       |         | 671 437 001  |  | MOTORABDECKUNG             |                                | MOTOR WIND SHEATH  | COUVERCLE MOTEUR | CUBIERTA DEL MOTOR  |
| 1            | 59   |         | 1       | 671 417 001  |  | MOTORABDECKUNG             |                                | MOTOR WIND SHEATH  | COUVERCLE MOTEUR | CUBIERTA DEL MOTOR  |
| 1            | 60   | 4       | 4       | 671 001 053  |  | SCHRAUBE SELBSTSCHNEIDEN D | 6x30                           | SELF-TAPPING SCREW | VIS DE FORAGE    | TORNILLO PERFORADOR |
| 1            | 61   | 1       |         | 671 002 015  |  | MOTOR                      | CE/GS , 230V~50 Hz, 1100W      | MOTOR              | MOTEUR           | MOTOR               |
| 1            | 61   |         | 1       | 671 002 014  |  | MOTOR                      | CE/GS , 230V~50 Hz             | MOTOR              | MOTEUR           | MOTOR               |
| 1            | 62   | 1       | 1       | 671 002 009  |  | RINGSCHLÜSSEL              |                                | BOX SPANNER        | CLÉ POLYGONALE   | LLAVE DE ESTRÍAS    |