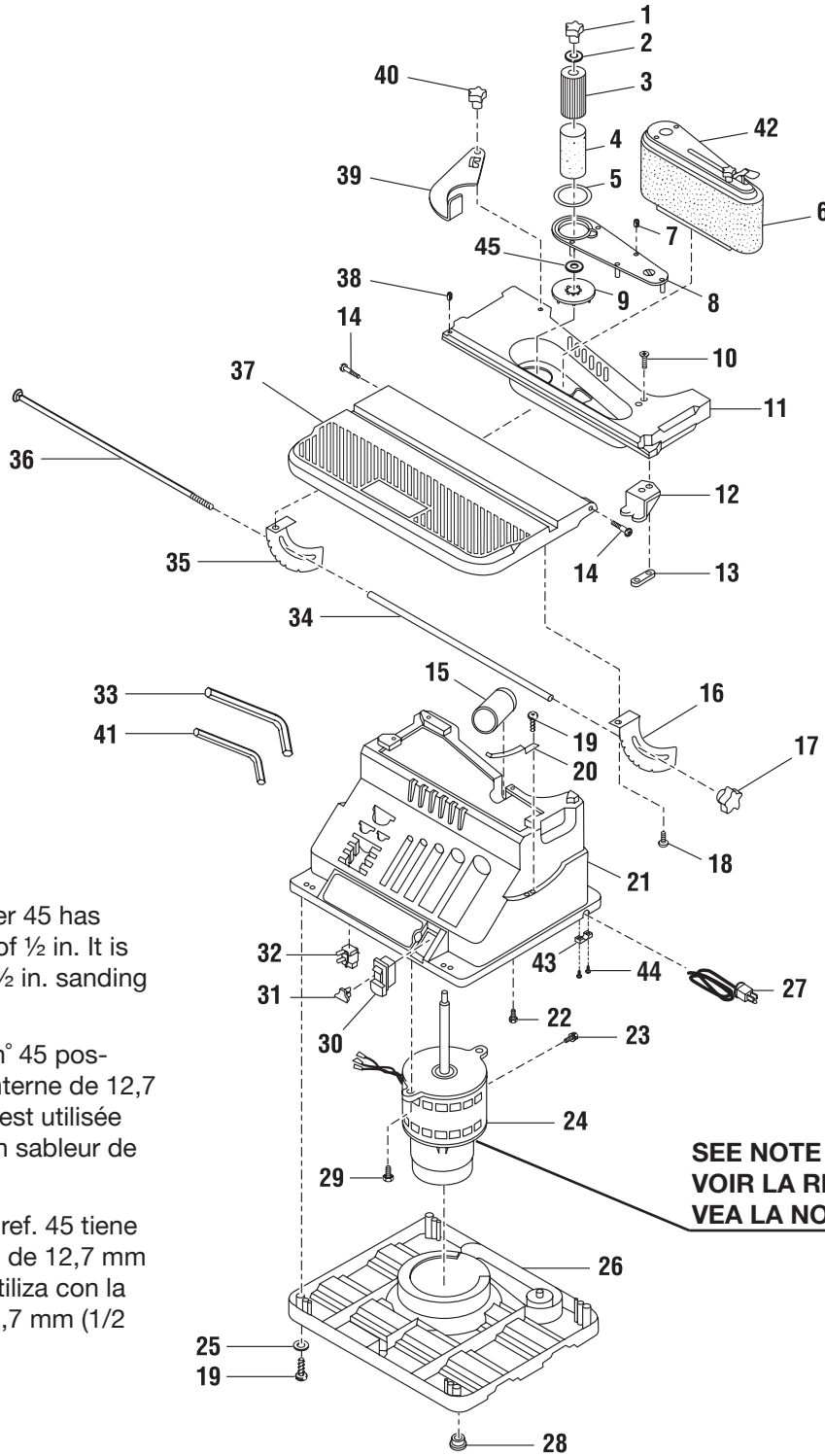


# RIDGID OSCILLATING EDGE BELT/SPINDLE SANDER – MODEL NUMBER EB44241



**\*NOTE:** Key Number 45 has an inside diameter of ½ in. It is only used with the ½ in. sanding sleeve.”

**\*NOTE :** La pièce n° 45 possède un diamètre interne de 12,7 mm (1/2 po). Elle n’est utilisée qu’avec le manchon sableur de 12,7 mm (1/2 po).

**\*NOTA:** El núm. de ref. 45 tiene un diámetro interno de 12,7 mm (½ pulg.). Sólo se utiliza con la manga de lija de 12,7 mm (1/2 pulg.)

**SEE NOTE  
VOIR LA REMARQUE  
VEA LA NOTA**

**NOTE:** The assembly shown represents an important part of the double insulated system. To avoid the possibility of alteration or damage to the system, service should be performed by your nearest Authorized Service Center.

**REMARQUE :** L’assemblage représenté constitue une importante partie du système de double isolation. Pour éviter tout risque de modification ou d’endommagement du système, confier toutes les réparations au centre de réparations agréé le plus proche.

**NOTA:** El conjunto ilustrado representa una parte importante del sistema de doble aislamiento. Para evitar la probabilidad de modificación o daños al sistema, el servicio debe ser realizado en el centro de servicio autorizado de su preferencia.

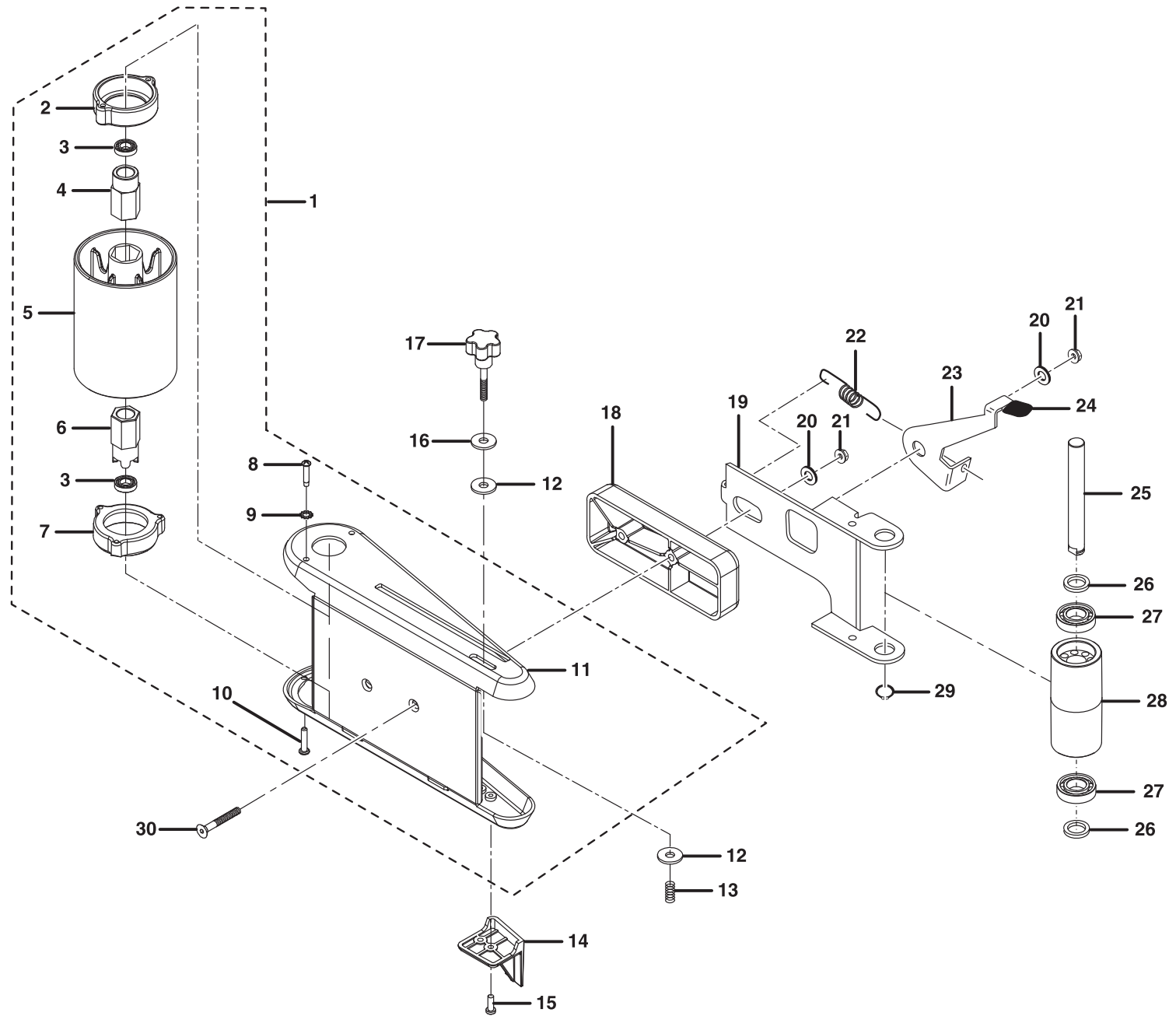
# RIDGID OSCILLATING EDGE BELT/SPINDLE SANDER – MODEL NUMBER EB44241

The model number will be found on a label attached to the motor housing. Always mention the model number in all correspondence regarding your **BELT/SPINDLE SANDER** or when ordering repair parts.

## PARTS LIST

Key Part No.	Part Number	Description	Qty.	Key Part No.	Part Number	Description	Qty.
1	826358-1	SPINDLE KNOB.....	1	18	159572-138	SCREW (10-32 x 3/8 in. WASHER HD.) .....	2
2	805553-2	WASHER (21/64 in. x 5/8 in. x 1/32 in.) .....	1	19	808380-7	SCREW (10-14 x 1/2 in. PAN HD.) .....	2
	805553-30	WASHER (5/8 in. x 1-3/4 in. x 1/8 in.).....	1	20	825840	DETENT SPRING .....	1
	805553-24	WASHER (21/64 in. x 7/8 in. x 3/64 in.) .....	1	21	830456	BASE.....	1
3	822304	SANDING DRUM (3/4 in.) .....	1	22	159572-186	SCREW (1/4-20 x 1 in. HEX HD.).....	4
	822304-1	SANDING DRUM (1 in.) .....	1	23	824604	SCREW (8-32 x 3/8 in. HEX WASHER HD.)	1
	822304-2	SANDING DRUM (1-1/2 in.).....	1	24	080038001497	MOTOR/DRIVE ASSEMBLY.....	1
	822304-3	SANDING DRUM (2 in.) .....	1	25	805549-22	WASHER (13/64 in. x 3/8 in. x 1/32 in.) .....	4
4	822297-10	MEDIUM SANDING SLEEVE (1/2 in.) .....	1	26	826801	ENCLOSURE .....	1
	822297-11	FINE SANDING SLEEVE (3/4 in.) .....	1	27	080038001494	POWER CORD.....	1
	822297-12	FINE SANDING SLEEVE (1 in.) .....	1	28	819012	FOOT .....	4
	822297-13	FINE SANDING SLEEVE (1-1/2 in.) .....	1	29	9416630	HEX SCREW (5/16-18 x 1 in.).....	2
	822297-14	MEDIUM SANDING SLEEVE (2 in.) .....	1	30	080038001493	LOCKING SWITCH.....	1
5	825808	THROAT PLATE (2 in.).....	1	31	AC1000	RIDGID SAFETY LOCKOUT KEY ....	1
	825808-1	THROAT PLATE (1-1/2 in.).....	1	32	817399-11	RELAY.....	1
	825808-2	THROAT PLATE (1 in.).....	1	33	37837	HEX WRENCH (5/32 in.) .....	1
	825808-3	THROAT PLATE (1/2 in.).....	1	34	825549	TABLE LOCK SPACER .....	1
6	825533	SANDING BELT .....	1	35	825537-1	LEFT TABLE LOCK BRACKET.....	1
7	810993-2	HALF DOG SET SCREW (10-32 x 1/2 in.).....	6	36	825543	TABLE LOCK BOLT .....	1
8	825841	THROAT PLATE ADAPTER .....	1	37	825524	FRONT TABLE .....	1
9	830291	FAN.....	1	38	803309-2	SET SCREW (10-32 x 3/8 in. SOC. HD.).....	2
10	805297-9	SCREW (1/4-20 x 5/8 in. FLAT HEAD) .....	2	39	825525	STOP PLATE.....	1
11	825523	REAR TABLE.....	1	40	825539-1	KNOB.....	1
12	825548	WEAR PLATE.....	1	41	37836	HEX WRENCH (3/32 in.) .....	1
13	825844	NUT, SPECIAL TWIN (1/4-20).....	1	42	080038001503	BELT SANDING ASSEMBLY (SEE FIG.2)	
14	825842	SHOULDER SCREW (1/4-20).....	2	43	080038001495	CORD CLAMP .....	1
15	830246	SAWDUST CHUTE .....	1	44	080038001496	SCREW (M4 x 12 mm).....	2
16	825537	RIGHT TABLE LOCK BRACKET .....	1	45	41201B093	* WASHER (1/2 in. x 7/8 in. x 1/16 in.)..	1
17	825852	KNOB (1/4-20 x 3/4 in.) .....	1		983000482	OPERATOR'S MANUAL (080038001900)	
					9-23-13 (REV:03)		

# RIDGID OSCILLATING EDGE BELT/SPINDLE SANDER - MODEL NUMBER EB44241



**RIDGID OSCILLATING EDGE BELT/SPINDLE SANDER – MODEL NUMBER EB44241**

The model number will be found on a plate attached to the motor housing. Always mention the model number in all correspondence regarding your **BELT/SPINDLE SANDER** or when ordering repair parts.

**PARTS LIST**

<b>Key No.</b>	<b>Part Number</b>	<b>Description</b>	<b>Qty.</b>
1	080038001700	PLATEN AND ROLLER ASSEMBLY (INC. KEY NOS. 2-11) .....	1
2	080038001516	UPPER BEARING SEAT .....	1
3	825541	BALL BEARING (6203LLU) .....	2
4	080038001515	UPPER BUSHING .....	1
5	080038001514	DRIVE DRUM .....	1
6	080038001513	LOWER BUSHING .....	1
7	080038001512	LOWER BEARING SEAT .....	1
8	080038001509	SCREW (M4 x 12 mm PAN HD.) .....	2
9	080038001510	LOCK WASHER (4 mm) .....	2
10	080038001511	SCREW (M4 x 12 mm FLAT HD.) .....	3
11	080038001504	PLATEN .....	1
12	805549-4	WASHER (13/64 in. x 1/2 in. x 3/64 in.) .....	2
13	30521	SWIVEL SPRING .....	1
14	080038001505	LOCATION GUIDE.....	1
15	080038001506	SCREW (M4 x 10 mm) .....	2
16	820175	RUBBER WASHER .....	1
17	825539	KNOB (10-32 x 1-1/4 in.).....	1
18	080038001507	SPACER .....	1
19	830305	GUIDE .....	1
20	9416712	WASHER (3/16 in. x 5/8 in. x 1/6 in.) .....	2
21	37482	LOCK NUT (10-32).....	2
22	825531	EXTENSION SPRING .....	1
23	825529	LEVER .....	1
24	826163-2	GRIP CAP.....	1
25	830304	IDLE SHAFT .....	1
26	830306	WASHER (M12) .....	2
27	420010002-A	BALL BEARING (6001LLU) .....	2
28	080038001508	DRUM/IDLE.....	1
29	817453	RETAINING RING.....	1
30	821166-1	SCREW (10-32 x 1-1/2 in. HEX FLAT HD.).....	2