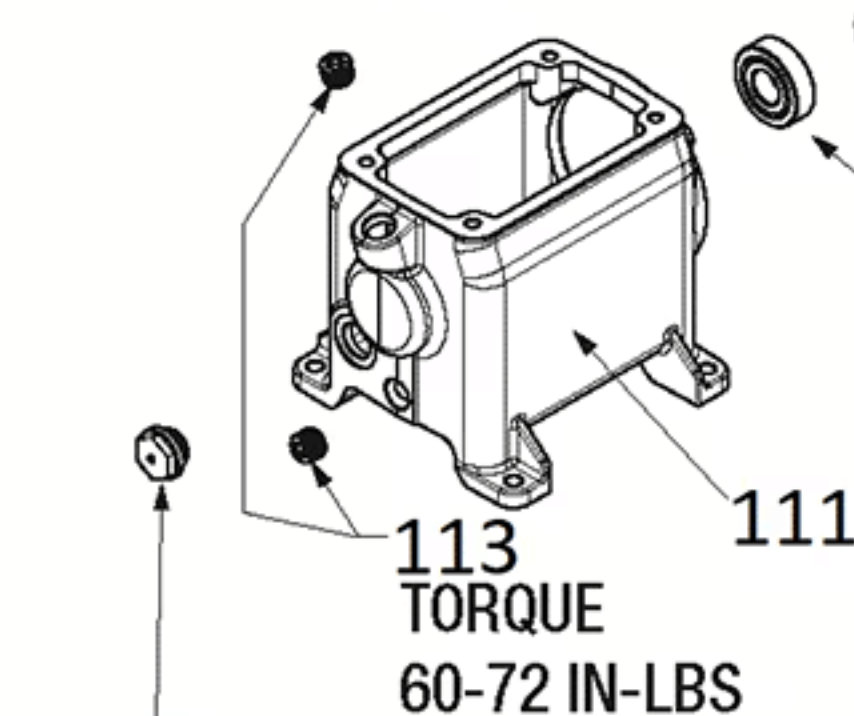
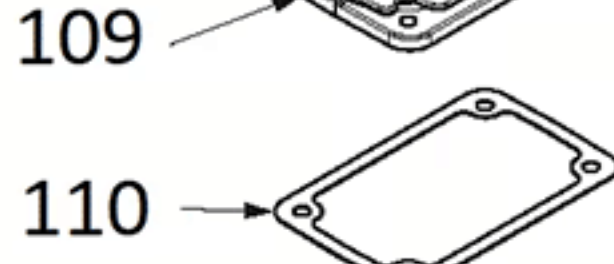
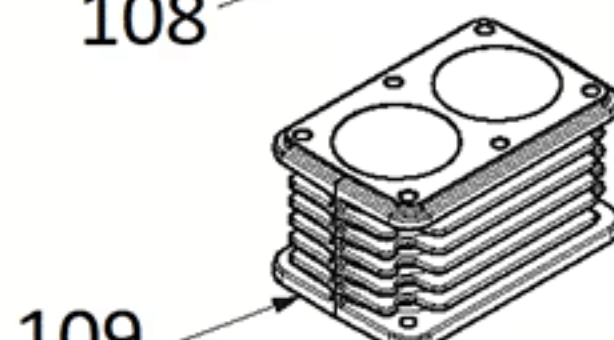
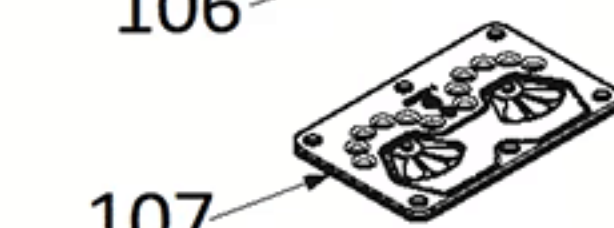
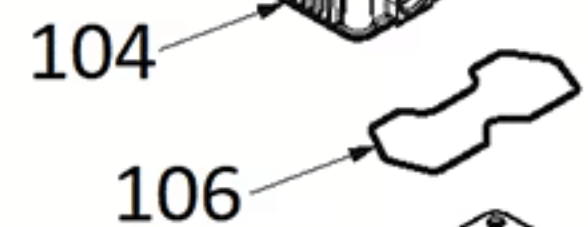
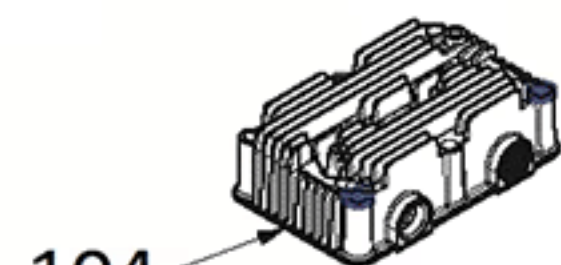
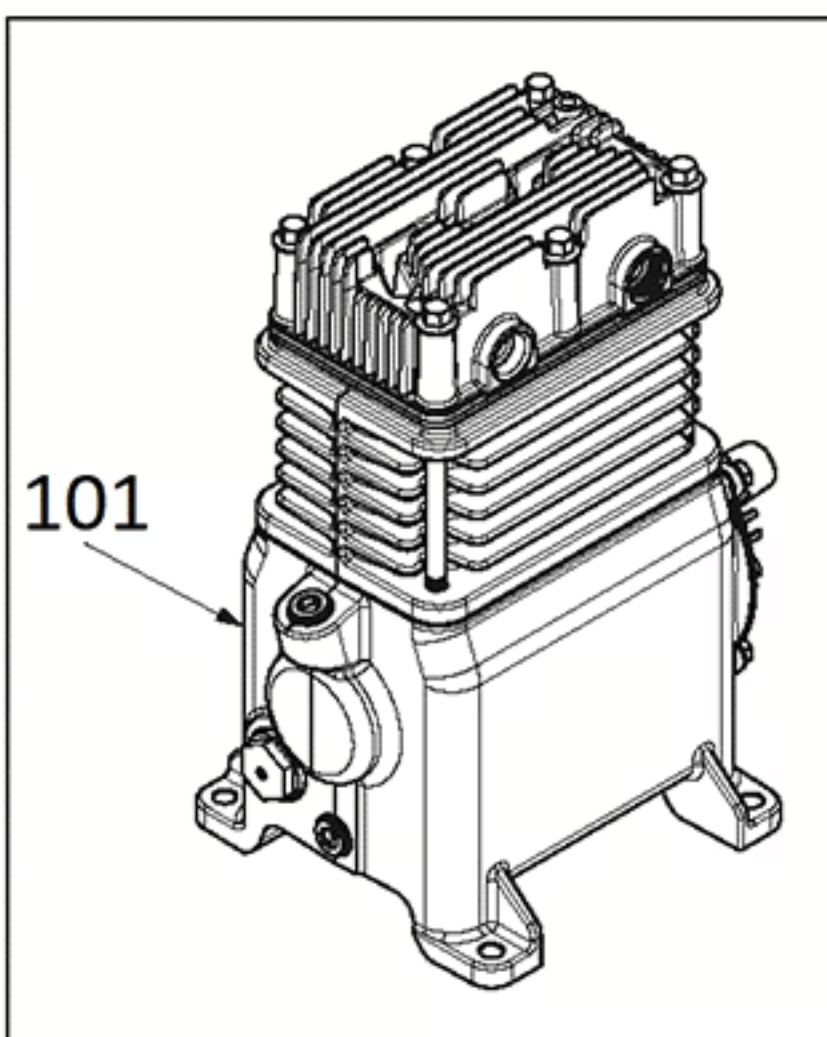
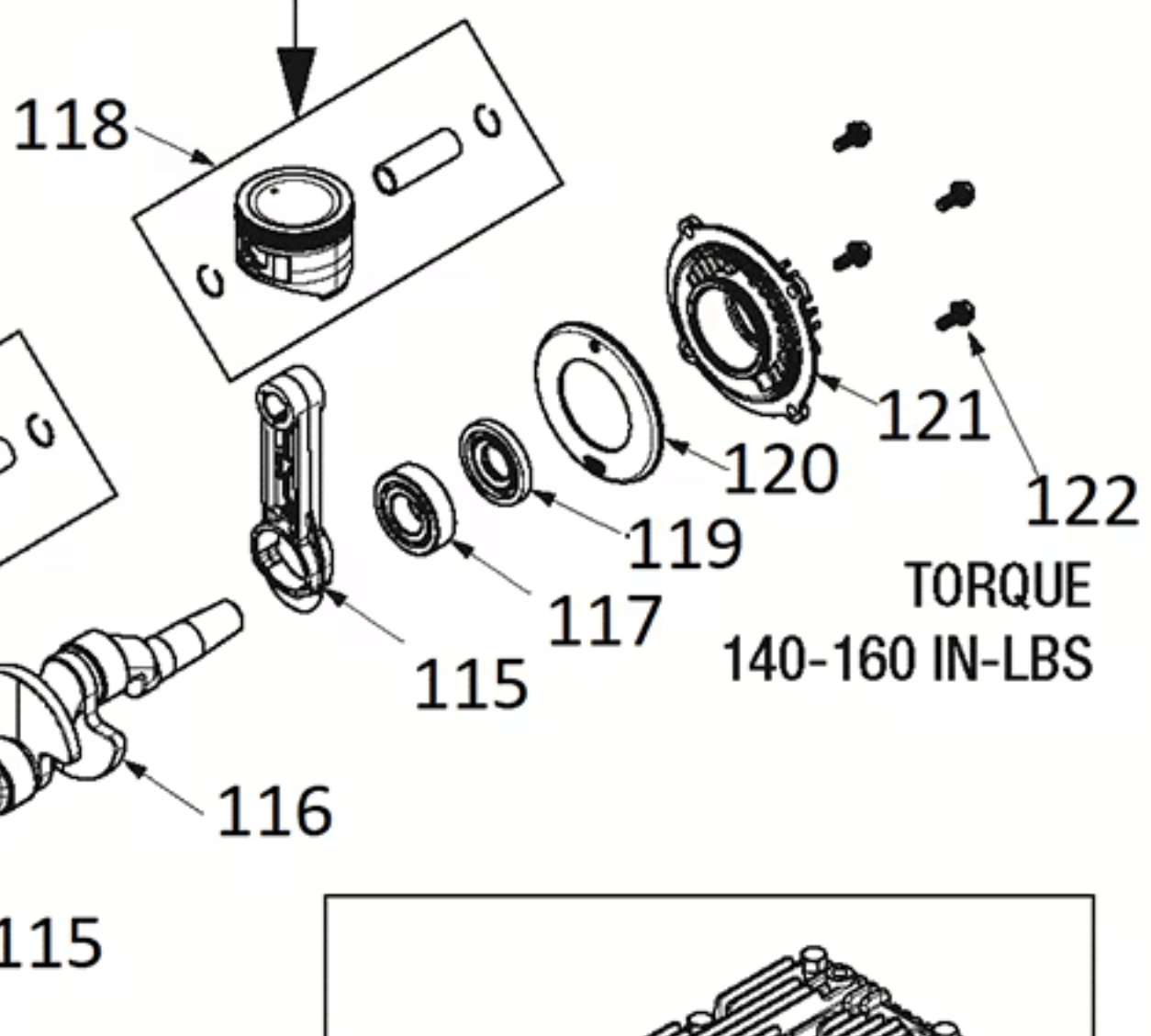
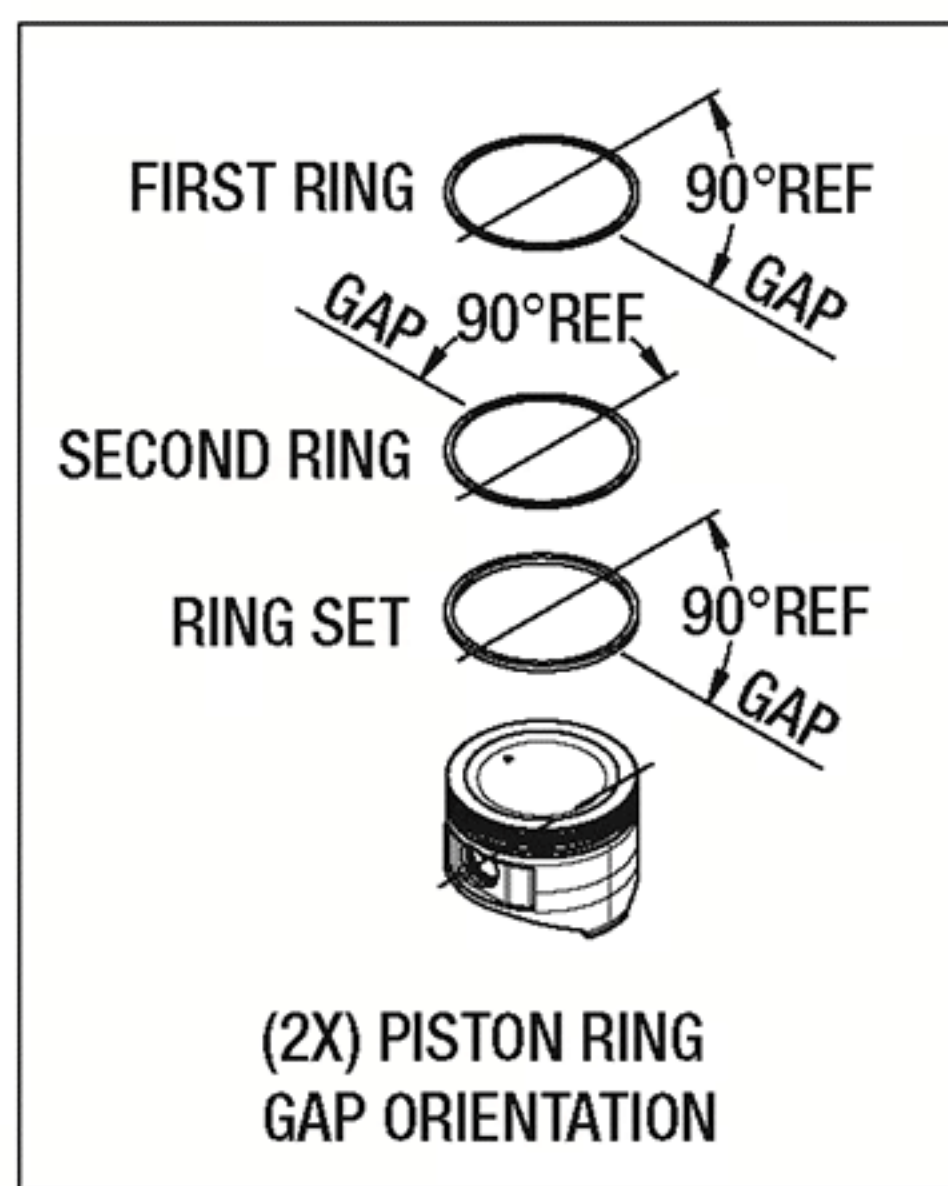
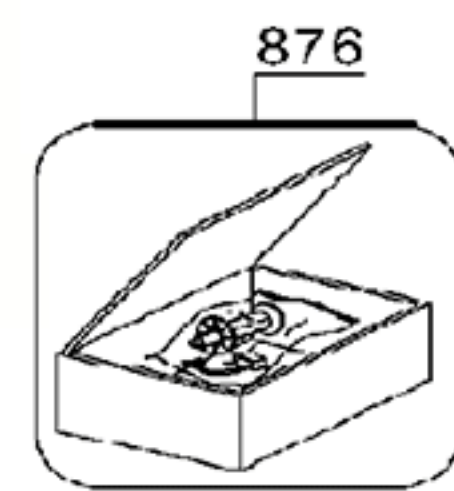


103  
TORQUE  
15-20 FT-LBS

102  
TORQUE  
15-20 FT-LBS



112  
TORQUE  
50-60 IN-LBS



**#1 - GUARD**,Qty Req in Model: 1

**Part #:** 5140232-63**Description:** GUARD

**#2 - SCREW**,Qty Req in Model: 4

**Part #:** 5140235-74**Description:** SCREW

**#3 - SCREW**,Qty Req in Model: 3

**Part #:** 5140235-73**Description:** SCREW

**#4 - WASHER**,Qty Req in Model: 3

**Part #:** 5140235-75**Description:** WASHER

**#5 - GUARD**,Qty Req in Model: 1

**Part #:** 5140235-76**Description:** GUARD

**#6 - NUT**,Qty Req in Model: 4

**Part #:** 5140235-77**Description:** NUT

**#7 - SCREW**,Qty Req in Model: 2

**Part #:** 5140235-78**Description:** SCREW

**#8 - PULLEY KIT**,Qty Req in Model: 1

**Part #:** 5140235-79**Description:** PULLEY KIT

**#9 - V-BELT**,Qty Req in Model: 1

**Part #:** 5140235-80**Description:** V-BELT

**#10 - RUN CAPACITOR**,Qty Req in Model: 1

**Part #:** 5140236-17**Description:** RUN CAPACITOR

**#10 - START CAPACITOR**,Qty Req in Model: 1

**Part #:** 5140236-18**Description:** START CAPACITOR

**#10 - CAPACITOR COVER**,Qty Req in Model: 1

**Part #:** 5140236-19**Description:** CAPACITOR COVER

**#10 - START CAP COVER**,Qty Req in Model: 1

**Part #:** 5140236-20**Description:** START CAP COVER

**#10 - RUN CAPACITOR**,Qty Req in Model: 1

**Part #:** 5140236-21**Description:** RUN CAPACITOR

**#10 - START CAPACITOR**,Qty Req in Model: 1

**Part #:** 5140236-22**Description:** START CAPACITOR

**#10 - COVER**,Qty Req in Model: 1

**Part #:** 5140236-23**Description:** COVER

**#10 - START CAP COVER**,Qty Req in Model: 1

**Part #:** 5140236-24**Description:** START CAP COVER

**#10 - MOTOR SA**,Qty Req in Model: 1



**Part #:** 5170055-52**Description:** MOTOR SA

**#11 - KEY**,Qty Req in Model: 1

**Part #:** 5140235-81**Description:** KEY

**#12 - SCREW**,Qty Req in Model: 4

**Part #:** 5140235-82**Description:** SCREW

**#13 - NUT**,Qty Req in Model: 4

**Part #:** 5140235-83**Description:** NUT

**#14 - CORD**,Qty Req in Model: 1

**Part #:** 5140169-21**Description:** CORD

**#15 - BUSHING**,Qty Req in Model: 1

**Part #:** 5140169-40**Description:** BUSHING

**#15 - O-RING**,Qty Req in Model: 2

**Part #:** 5140169-41**Description:** O-RING

**#15 - BUSHING**,Qty Req in Model: 1

**Part #:** 5140169-42**Description:** BUSHING

**#15 - DRAIN VALVE**,Qty Req in Model: 1

**Part #:** 5140236-31**Description:** DRAIN VALVE

**#16 - SCREW**,Qty Req in Model: 4

**Part #:** 5140235-84**Description:** SCREW

**#17 - FILTER**,Qty Req in Model: 1

**Part #:** 5140235-85**Description:** FILTER

**#18 - FLYWHEEL**,Qty Req in Model: 1

**Part #:** 5140235-86**Description:** FLYWHEEL

**#19 - SCREW**,Qty Req in Model: 1

**Part #:** 5140235-87**Description:** SCREW

**#20 - VALVE**,Qty Req in Model: 1

**Part #:** 5140235-88**Description:** VALVE

**#21 - PRESSURE RELIEF TUBE**,Qty Req in Model: 1

**Part #:** 5140169-44**Description:** PRESSURE RELIEF  
TUBE

**#22 - TUBE SA**,Qty Req in Model: 1

**Part #:** 5140235-89**Description:** TUBE SA

**#23 - TUBE OUTLET**,Qty Req in Model: 1

**Part #:** 5140235-90**Description:** TUBE OUTLET

**#24 - NUT SLEEVE 1/2**,Qty Req in Model: 1

**Part #:** 5140230-45**Description:** NUT SLEEVE 1/2

**#25 - NUT**,Qty Req in Model: 1

**Part #:** 5140235-91**Description:** NUT

**#26 - PRESSURE SWITCH**,Qty Req in Model: 1

**Part #:** 5140169-46**Description:** PRESSURE SWITCH

**#27 - SAFETY VALVE**,Qty Req in Model: 1

**Part #:** 5140169-22**Description:** SAFETY VALVE

**#28 - PRESSURE GAUGE**,Qty Req in Model: 1

**Part #:** 5140169-12**Description:** PRESSURE GAUGE

**#29 - NIPPLE**,Qty Req in Model: 1

**Part #:** 5140235-92**Description:** NIPPLE

**#30 - SCREW**,Qty Req in Model: 1

**Part #:** 5140238-00**Description:** SCREW

**#31 - ISOLATOR**,Qty Req in Model: 1

**Part #:** 5140169-47**Description:** ISOLATOR

**#101 - PUMP**,Qty Req in Model: 1

**Part #:** 5140235-94**Description:** PUMP

**#102 - SCREW**,Qty Req in Model: 2

**Part #:** 5140235-95**Description:** SCREW

**#103 - SCREW**,Qty Req in Model: 4

**Part #:** 5140235-96**Description:** SCREW

**#104 - CYLINDER HEAD**,Qty Req in Model: 1

**Part #:** 5140235-97**Description:** CYLINDER HEAD

**#106 - O RING**,Qty Req in Model: 1

**Part #:** 5140235-99**Description:** O RING

**#107 - PLATE**,Qty Req in Model: 1

**Part #:** 5140236-00**Description:** PLATE

**#108 - O RING**,Qty Req in Model: 2

**Part #:** 5140236-01**Description:** O RING

**#109 - CYLINDER**,Qty Req in Model: 1

**Part #:** 5140236-02**Description:** CYLINDER

**#110 - GASKET**,Qty Req in Model: 1

**Part #:** 5140236-03**Description:** GASKET

**#111 - CRANKCASE**,Qty Req in Model: 1

**Part #:** 5140236-04**Description:** CRANKCASE

**#112 - VIEWING GLASS**,Qty Req in Model: 1

**Part #:** 5140236-05**Description:** VIEWING GLASS

**#113 - PLUG**,Qty Req in Model: 2

**Part #:** 5140236-06**Description:** PLUG

**#114 - BEARING**,Qty Req in Model: 1

**Part #:** 5140236-07**Description:** BEARING

**#115 - CONNECTING ROD**,Qty Req in Model: 2

**Part #:** 5140236-08**Description:** CONNECTING ROD

**#116 - CRANKSHAFT**,Qty Req in Model: 1

**Part #:** 5140236-09**Description:** CRANKSHAFT

**#117 - BEARING**,Qty Req in Model: 1

**Part #:** 5140236-10**Description:** BEARING

**#118 - PISTON SA**,Qty Req in Model: 2

**Part #:** 5140236-11**Description:** PISTON SA

**#119 - SEAL**,Qty Req in Model: 1

**Part #:** 5140236-12**Description:** SEAL

**#120 - BAFFLE**,Qty Req in Model: 1

**Part #:** 5140236-13**Description:** BAFFLE

**#121 - COVER**,Qty Req in Model: 1

**Part #:** 5140236-14**Description:** COVER

**#122 - SCREW**,Qty Req in Model: 4

**Part #:** 5140236-15**Description:** SCREW

**#876 - GASKET SET**,Qty Req in Model: 1

**Part #:** 5140235-98**Description:** GASKET SET