

**#1 - THROAT PLATE**,Qty Req in Model: 1  
**Part #:** N433484      **Description:** THROAT PLATE

**#7 - RAIL REAR**,Qty Req in Model: 1  
**Part #:** N689415      **Description:** RAIL REAR

**#8 - SCREW.SPECIAL**,Qty Req in Model: 8  
**Part #:** N694571      **Description:**  
SCREW.SPECIAL

**#9 - TABLE SA**,Qty Req in Model: 1  
**Part #:** N773300      **Description:** TABLE SA

**#10 - RAIL SA**,Qty Req in Model: 2  
**Part #:** 5140179-60      **Description:** RAIL SA

**#11 - SCALE LABEL**,Qty Req in Model: 1  
**Part #:** N440453      **Description:** SCALE LABEL

**#12 - RAIL SA**,Qty Req in Model: 1  
**Part #:** N688778      **Description:** RAIL SA

**#13 - INDICATOR**,Qty Req in Model: 1  
**Part #:** N773301      **Description:** INDICATOR

**#14 - SCREW.SPECIAL**,Qty Req in Model: 2  
**Part #:** N695962      **Description:**  
SCREW.SPECIAL

**#15 - WASHER**,Qty Req in Model: 4  
**Part #:** 5140135-36      **Description:** WASHER

**#16 - SPRING**,Qty Req in Model: 2  
**Part #:** 5140135-37      **Description:** SPRING

**#17 - LEVER SA**,Qty Req in Model: 1  
**Part #:** 5140032-26      **Description:** LEVER SA

**#18 - NUT M8**,Qty Req in Model: 1  
**Part #:** 5140134-76      **Description:** NUT M8

**#19 - ADJUSTER**,Qty Req in Model: 1  
**Part #:** 5140032-17      **Description:** ADJUSTER

**#20 - SPRING**,Qty Req in Model: 1  
**Part #:** 5140134-75      **Description:** SPRING

**#21 - WASHER M8**,Qty Req in Model: 2  
**Part #:** 5140032-15      **Description:** WASHER M8

**#22 - SHAFT SA**,Qty Req in Model: 1

**Part #:** 5140179-62      **Description:** SHAFT SA

**#23 - PLATE**,Qty Req in Model: 2

**Part #:** 5140032-77      **Description:** PLATE

**#24 - SCREW.SPECIAL**,Qty Req in Model: 26

**Part #:** N697013      **Description:**  
SCREW.SPECIAL

**#25 - PLATE**,Qty Req in Model: 1

**Part #:** 5140179-73      **Description:** PLATE

**#26 - LOCK HANDLE**,Qty Req in Model: 1

**Part #:** N440620      **Description:** LOCK HANDLE

**#27 - WASHER**,Qty Req in Model: 1

**Part #:** 5140134-74      **Description:** WASHER

**#28 - NUT M6**,Qty Req in Model: 1

**Part #:** 5140032-25      **Description:** NUT M6

**#31 - SHAFT**,Qty Req in Model: 1

**Part #:** N697158      **Description:** SHAFT

**#32 - PIN**,Qty Req in Model: 2

**Part #:** 5140032-34      **Description:** PIN

**#33 - LOCKING RING**,Qty Req in Model: 2

**Part #:** 5140032-33      **Description:** LOCKING RING

**#34 - GUARD**,Qty Req in Model: 2

**Part #:** 5140118-01      **Description:** GUARD

**#35 - BLOCK**,Qty Req in Model: 2

**Part #:** N697163      **Description:** BLOCK

**#36 - SCREW.SPECIAL**,Qty Req in Model: 4

**Part #:** N697169      **Description:**  
SCREW.SPECIAL

**#37 - BEARING BLOCK**,Qty Req in Model: 2

**Part #:** N697164      **Description:** BEARING  
BLOCK

**#38 - SPRING**,Qty Req in Model: 2

**Part #:** 5140032-37      **Description:** SPRING

**#39 - PINION GEAR**,Qty Req in Model: 2

**Part #:** 5140032-29      **Description:** PINION GEAR

**#40 - FENCE KNOB**,Qty Req in Model: 1

**Part #:** 5140032-28      **Description:** FENCE KNOB

**#41 - WASHER M10**,Qty Req in Model: 3

**Part #:** 5140032-27      **Description:** WASHER M10

**#42 - NUT**,Qty Req in Model: 2

**Part #:** 5140134-78      **Description:** NUT

**#100 - GUARD ASSEMBLY**,Qty Req in Model: 1

**Part #:** N436623      **Description:** GUARD  
ASSEMBLY

**#201 - BRACKET SA**,Qty Req in Model: 1

**Part #:** N773286      **Description:** BRACKET SA

**#202 - LEAF SPRING**,Qty Req in Model: 2

**Part #:** N696419      **Description:** LEAF SPRING

**#203 - PLATE**,Qty Req in Model: 2

**Part #:** N696416      **Description:** PLATE

**#204 - SCREW**,Qty Req in Model: 2

**Part #:** N696421      **Description:** SCREW

**#205 - BOLT**,Qty Req in Model: 1

**Part #:** N696422      **Description:** BOLT

**#206 - CLIP**,Qty Req in Model: 1

**Part #:** 5140134-60      **Description:** CLIP

**#207 - FENCE**,Qty Req in Model: 1

**Part #:** N773351      **Description:** FENCE

**#208 - SCREW**,Qty Req in Model: 2

**Part #:** 5140134-61      **Description:** SCREW

**#209 - STRAP**,Qty Req in Model: 1

**Part #:** 5140134-62      **Description:** STRAP

**#210 - BRACKET SA**,Qty Req in Model: 1

**Part #:** N773292      **Description:** BRACKET SA

**#211 - BRACKET**,Qty Req in Model: 1

**Part #:** N696410      **Description:** BRACKET

**#212 - FENCE**,Qty Req in Model: 1

**Part #:** N696403      **Description:** FENCE

**#213 - PLATE**,Qty Req in Model: 2

**Part #:** N696408      **Description:** PLATE

**#214 - SCREW**,Qty Req in Model: 2

**Part #:** N696425      **Description:** SCREW

**#215 - BRACKET**,Qty Req in Model: 1

**Part #:** N696409      **Description:** BRACKET

**#216 - SCREW.SPECIAL**,Qty Req in Model: 4

**Part #:** 5140135-70      **Description:**  
SCREW.SPECIAL

**#216 - SCREW.SPECIAL**,Qty Req in Model: 4

**Part #:** 5140135-70      **Description:**  
SCREW.SPECIAL

**#217 - SCREW**,Qty Req in Model: 2

**Part #:** N696417      **Description:** SCREW

**#220 - FENCE SA**,Qty Req in Model: 1

**Part #:** N878752      **Description:** FENCE SA

**#300 - MITRE FENCE**,Qty Req in Model: 1

**Part #:** N696327      **Description:** MITRE FENCE

**#400 - KICK BACK SA**,Qty Req in Model: 1

**Part #:** A26148      **Description:** KICK BACK SA

**#601 - SCREW**,Qty Req in Model: 2

**Part #:** N697215      **Description:** SCREW

**#602 - CLIP**,Qty Req in Model: 1

**Part #:** 5140032-43      **Description:** CLIP

**#603 - WASHER M4**,Qty Req in Model: 1

**Part #:** 5140032-06      **Description:** WASHER M4

**#604 - SCREW**,Qty Req in Model: 2

**Part #:** N697221      **Description:** SCREW

**#605 - CAP**,Qty Req in Model: 1

**Part #:** N697218      **Description:** CAP

**#606 - SPRING**,Qty Req in Model: 1

**Part #:** N697216      **Description:** SPRING

**#607 - NUT**,Qty Req in Model: 1

**Part #:** N697217      **Description:** NUT

**#608 - BRACKET**,Qty Req in Model: 1

**Part #:** N697213      **Description:** BRACKET

**#609 - SCREW.SPECIAL**,Qty Req in Model: 3

**Part #:** 5140135-11      **Description:**  
SCREW.SPECIAL

**#610 - SCREW**,Qty Req in Model: 2

**Part #:** 5140135-17      **Description:** SCREW

**#611 - RIVING KNIFE**,Qty Req in Model: 1

**Part #:** N695948      **Description:** RIVING KNIFE

**#612 - PLATE**,Qty Req in Model: 1

**Part #:** N697214      **Description:** PLATE

**#613 - WASHER LOCK**,Qty Req in Model: 1

**Part #:** 5140177-80      **Description:** WASHER LOCK

**#614 - KNOB**,Qty Req in Model: 1

**Part #:** N697224      **Description:** KNOB

**#800 - GREASE**,Qty Req in Model: 1

**Part #:** 583534-00      **Description:** GREASE

**#856 - BLADE**,Qty Req in Model: 1

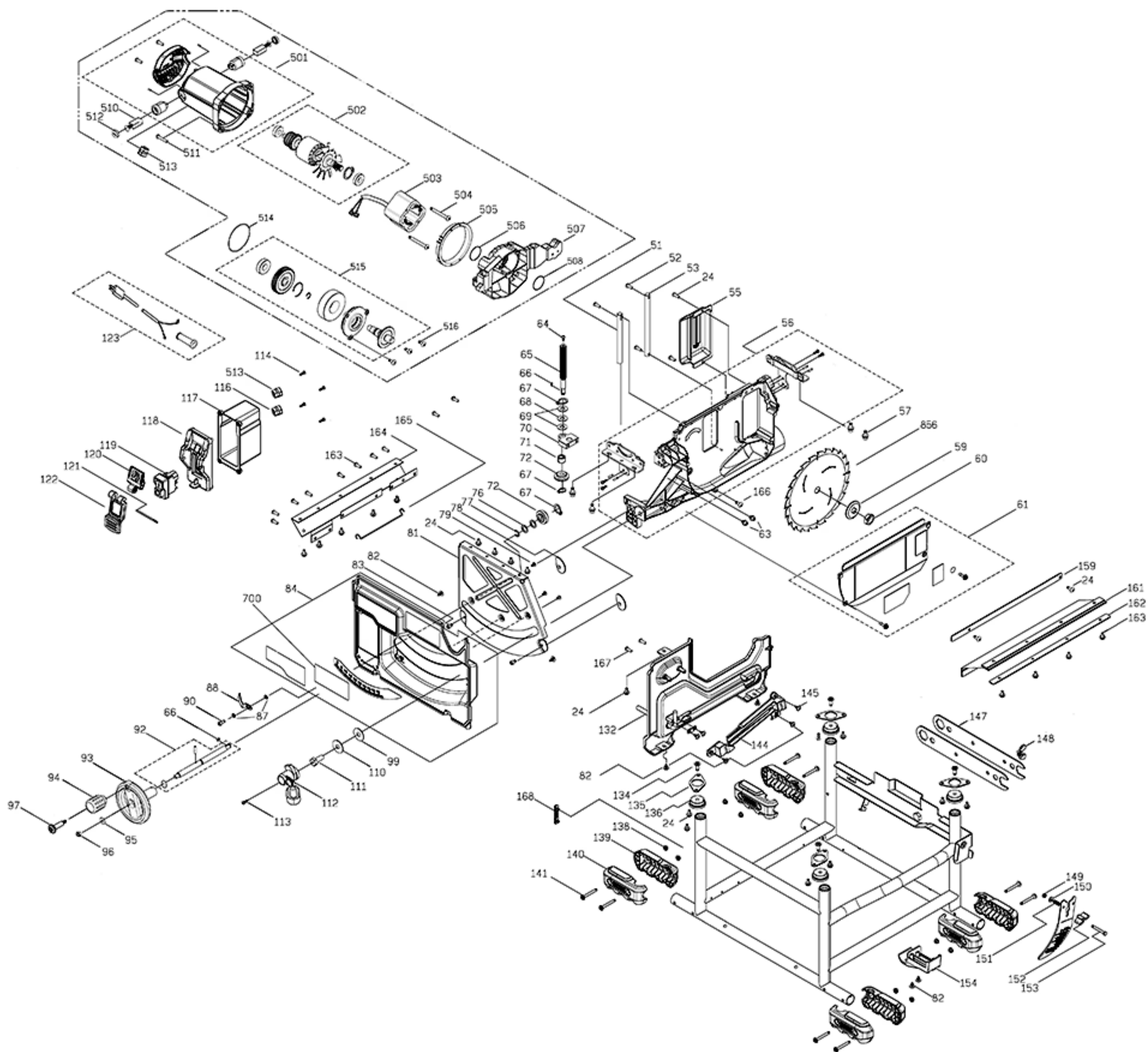
**Part #:** DWA181424      **Description:** BLADE

**#856 - BLADE SET**,Qty Req in Model: 1

**Part #:** DWA181424B10**Description:** BLADE SET

**#856 - SAW BLADE**,Qty Req in Model: 1

**Part #:** DWA181440      **Description:** SAW BLADE



**#24 - SCREW.SPECIAL**,Qty Req in Model: 26

**Part #:** N697013      **Description:** SCREW.SPECIAL

**#51 - SHAFT**,Qty Req in Model: 1

**Part #:** N434666      **Description:** SHAFT

**#52 - SCREW.SPECIAL**,Qty Req in Model: 3

**Part #:** 5140135-60      **Description:** SCREW.SPECIAL

**#53 - SHAFT**,Qty Req in Model: 1

**Part #:** N434667      **Description:** SHAFT

**#55 - GUARD**,Qty Req in Model: 1

**Part #:** N434696      **Description:** GUARD

**#56 - CASTING**,Qty Req in Model: 1

**Part #:** N773338      **Description:** CASTING

**#57 - SCREW.SPECIAL**,Qty Req in Model: 4

**Part #:** 5140135-29      **Description:** SCREW.SPECIAL

**#59 - WASHER**,Qty Req in Model: 1

**Part #:** N695942      **Description:** WASHER

**#60 - NUT**,Qty Req in Model: 1

**Part #:** 429989-94      **Description:** NUT

**#61 - PANEL SA**,Qty Req in Model: 1

**Part #:** N773312      **Description:** PANEL SA

**#64 - SCREW.SPECIAL**,Qty Req in Model: 1

**Part #:** 5140134-90      **Description:** SCREW.SPECIAL

**#65 - SHAFT**,Qty Req in Model: 1

**Part #:** N434670      **Description:** SHAFT

**#66 - KEY**,Qty Req in Model: 2

**Part #:** 5140032-50      **Description:** KEY

**#67 - RETAINER**,Qty Req in Model: 3

**Part #:** N697197      **Description:** RETAINER

**#68 - WASHER BOW**,Qty Req in Model: 1

**Part #:** 5140032-75      **Description:** WASHER BOW

**#69 - WASHER THRUST**,Qty Req in Model: 2

**Part #:** 5140032-72      **Description:** WASHER THRUST

**#70 - BLOCK**,Qty Req in Model: 1



**Part #:** N697202      **Description:** BLOCK

**#71 - SPACER**,Qty Req in Model: 1

**Part #:** 5140179-64      **Description:** SPACER

**#72 - BEVEL GEAR**,Qty Req in Model: 1

**Part #:** 5140061-65      **Description:** BEVEL GEAR

**#76 - WASHER**,Qty Req in Model: 2

**Part #:** 5140033-42      **Description:** WASHER

**#77 - RETAINER**,Qty Req in Model: 1

**Part #:** N697168      **Description:** RETAINER

**#78 - CAM**,Qty Req in Model: 2

**Part #:** N441179      **Description:** CAM

**#79 - SCREW**,Qty Req in Model: 3

**Part #:** 5140032-05      **Description:** SCREW

**#81 - SUPPORT PLATE**,Qty Req in Model: 1

**Part #:** N442868      **Description:** SUPPORT  
PLATE

**#82 - SCREW**,Qty Req in Model: 8

**Part #:** 330045-49      **Description:** SCREW

**#83 - SCREW**,Qty Req in Model: 2

**Part #:** 5140135-91      **Description:** SCREW

**#84 - PANEL FRONT**,Qty Req in Model: 1

**Part #:** N773329      **Description:** PANEL FRONT

**#87 - WASHER LOCK**,Qty Req in Model: 2

**Part #:** 5140033-43      **Description:** WASHER LOCK

**#88 - INDICATOR**,Qty Req in Model: 1

**Part #:** N440766      **Description:** INDICATOR

**#90 - SCREW**,Qty Req in Model: 1

**Part #:** 5140032-66      **Description:** SCREW

**#92 - SHAFT SA**,Qty Req in Model: 1

**Part #:** N697188      **Description:** SHAFT SA

**#93 - HANDLE**,Qty Req in Model: 1

**Part #:** 5140117-77      **Description:** HANDLE

**#94 - KNOB**,Qty Req in Model: 1

**Part #:** 5140032-47      **Description:** KNOB

**#95 - WASHER**,Qty Req in Model: 1

**Part #:** 5140011-21      **Description:** WASHER

**#96 - NUT**,Qty Req in Model: 1

**Part #:** 5140135-61      **Description:** NUT

**#97 - SCREW**,Qty Req in Model: 1

**Part #:** 5140032-46      **Description:** SCREW

**#99 - WASHER PLASTIC**,Qty Req in Model: 1

**Part #:** 5140061-68      **Description:** WASHER  
PLASTIC

**#99 - WASHER PLASTIC**,Qty Req in Model: 1

**Part #:** 5140061-68      **Description:** WASHER  
PLASTIC

**#100 - GUARD ASSEMBLY**,Qty Req in Model: 1

**Part #:** N436623      **Description:** GUARD  
ASSEMBLY

**#111 - LOCK SCREW**,Qty Req in Model: 1

**Part #:** 5140032-56      **Description:** LOCK SCREW

**#112 - HANDLE**,Qty Req in Model: 1

**Part #:** N436291      **Description:** HANDLE

**#113 - SCREW.SPECIAL**,Qty Req in Model: 1

**Part #:** 5140179-66      **Description:**  
SCREW.SPECIAL

**#114 - SCREW**,Qty Req in Model: 4

**Part #:** N714330      **Description:** SCREW

**#116 - CORD PROTECTOR**,Qty Req in Model: 1

**Part #:** N714351      **Description:** CORD  
PROTECTOR

**#117 - HOUSING SWITCH**,Qty Req in Model: 1

**Part #:** N697176      **Description:** HOUSING  
SWITCH

**#118 - SWITCH SUPPORT**,Qty Req in Model: 1

**Part #:** N697171      **Description:** SWITCH  
SUPPORT

**#119 - SWITCH 115V**,Qty Req in Model: 1

**Part #:** N603746      **Description:** SWITCH 115V

**#120 - FLAP**,Qty Req in Model: 1

**Part #:** N697172      **Description:** FLAP

**#121 - LOCKING PIN**,Qty Req in Model: 1

**Part #:** N697175      **Description:** LOCKING PIN

**#122 - PADDLE**,Qty Req in Model: 1

**Part #:** N697173      **Description:** PADDLE

**#123 - CORD/10FT/14-2SJ**,Qty Req in Model: 1

**Part #:** 330079-98      **Description:** CORD/10FT/14-  
2SJ

**#132 - PANEL LH**,Qty Req in Model: 1

**Part #:** N695597      **Description:** PANEL LH

**#134 - SCREW**,Qty Req in Model: 4

**Part #:** N695344      **Description:** SCREW

**#135 - PLATE**,Qty Req in Model: 4

**Part #:** 5140032-85      **Description:** PLATE

**#136 - BUMPER**,Qty Req in Model: 4

**Part #:** 5140032-84      **Description:** BUMPER

**#138 - NUT M5**,Qty Req in Model: 8

**Part #:** 5140095-74      **Description:** NUT M5

**#139 - FOOT**,Qty Req in Model: 4

**Part #:** N715236      **Description:** FOOT

**#140 - FOOT**,Qty Req in Model: 4

**Part #:** N715237      **Description:** FOOT

**#141 - SCREW.SPECIAL**,Qty Req in Model: 8

**Part #:** 5140135-64      **Description:**  
SCREW.SPECIAL

**#144 - BRACKET**,Qty Req in Model: 1

**Part #:** 5140179-76      **Description:** BRACKET

**#145 - SCREW.SPECIAL**,Qty Req in Model: 4

**Part #:** 5140135-70      **Description:**  
SCREW.SPECIAL

**#145 - SCREW.SPECIAL**,Qty Req in Model: 4

**Part #:** 5140135-70      **Description:**  
SCREW.SPECIAL

**#147 - WRENCH SPECIAL**,Qty Req in Model: 2

**Part #:** N506977      **Description:** WRENCH  
SPECIAL

**#148 - WING NUT**,Qty Req in Model: 1

**Part #:** 5140032-95      **Description:** WING NUT

**#149 - STOP NUT**,Qty Req in Model: 1

**Part #:** N123103      **Description:** STOP NUT

**#150 - SCREW**,Qty Req in Model: 1

**Part #:** 330016-27      **Description:** SCREW

**#151 - SPRING**,Qty Req in Model: 1

**Part #:** 5140135-73      **Description:** SPRING

**#152 - KNOB**,Qty Req in Model: 1

**Part #:** N695353      **Description:** KNOB

**#153 - BOLT**,Qty Req in Model: 1

**Part #:** N695354      **Description:** BOLT

**#154 - BRACKET**,Qty Req in Model: 1

**Part #:** N695349      **Description:** BRACKET

**#159 - BAR**,Qty Req in Model: 1

**Part #:** 5140179-70      **Description:** BAR

**#161 - GUARD**,Qty Req in Model: 1

**Part #:** N697232      **Description:** GUARD

**#163 - SCREW**,Qty Req in Model: 18

**Part #:** N714337      **Description:** SCREW

**#164 - GUARD**,Qty Req in Model: 1

**Part #:** N694563      **Description:** GUARD

**#165 - PLATE**,Qty Req in Model: 1

**Part #:** N743010      **Description:** PLATE

**#167 - SCREW**,Qty Req in Model: 2

**Part #:** 330019-04      **Description:** SCREW

**#168 - BUMPER**,Qty Req in Model: 1

**Part #:** N765793      **Description:** BUMPER

**#501 - FIELDCASE**,Qty Req in Model: 1

**Part #:** N773307      **Description:** FIELDCASE

**#502 - ARMATURE SA**,Qty Req in Model: 1

**Part #:** N695447      **Description:** ARMATURE SA

**#503 - FIELD**,Qty Req in Model: 1

**Part #:** N695448      **Description:** FIELD

**#504 - SCREW**,Qty Req in Model: 2

**Part #:** N713246      **Description:** SCREW

**#505 - BAFFLE FAN**,Qty Req in Model: 1

**Part #:** N397490      **Description:** BAFFLE FAN

**#506 - O RING**,Qty Req in Model: 1

**Part #:** N705198      **Description:** O RING

**#507 - GEARCASE**,Qty Req in Model: 1

**Part #:** N695375      **Description:** GEARCASE

**#508 - O RING**,Qty Req in Model: 1

**Part #:** N705196      **Description:** O RING

**#510 - BRUSH**,Qty Req in Model: 2

**Part #:** N713244      **Description:** BRUSH

**#511 - SCREW**,Qty Req in Model: 4

**Part #:** N713211      **Description:** SCREW

**#512 - BRUSH CAP**,Qty Req in Model: 2

**Part #:** N713238      **Description:** BRUSH CAP

**#513 - CORD PROTECTOR**,Qty Req in Model: 2

**Part #:** N713241      **Description:** CORD  
PROTECTOR

**#514 - O RING**,Qty Req in Model: 1

**Part #:** N696108      **Description:** O RING

**#515 - ARBOR SA**,Qty Req in Model: 1

**Part #:** N695450      **Description:** ARBOR SA

**#516 - SCREW**,Qty Req in Model: 3

**Part #:** 330045-67      **Description:** SCREW

**#856 - BLADE**,Qty Req in Model: 1

**Part #:** DWA181424      **Description:** BLADE

**#856 - BLADE SET**,Qty Req in Model: 1

**Part #:** DWA181424B10**Description:** BLADE SET

**#856 - SAW BLADE**,Qty Req in Model: 1

**Part #:** DWA181440      **Description:** SAW BLADE