

#1 - PLATE,Qty Req in Model: 1

Part #: N695951 **Description:** PLATE

#7 - RAIL REAR,Qty Req in Model: 1

Part #: N689415 **Description:** RAIL REAR

#8 - SCREW.SPECIAL,Qty Req in Model: 3

Part #: N694571 **Description:** SCREW.SPECIAL

#8 - SCREW.SPECIAL,Qty Req in Model: 3

Part #: N694571 **Description:** SCREW.SPECIAL

#9 - TABLE SA,Qty Req in Model: 1

Part #: N773300 **Description:** TABLE SA

#10 - RAIL SA,Qty Req in Model: 2

Part #: N694553 **Description:** RAIL SA

#11 - SCALE LABEL,Qty Req in Model: 1

Part #: N440453 **Description:** SCALE LABEL

#12 - RAIL SA,Qty Req in Model: 1

Part #: N688778 **Description:** RAIL SA

#13 - INDICATOR,Qty Req in Model: 1

Part #: N773301 **Description:** INDICATOR

#14 - SCREW.SPECIAL,Qty Req in Model: 2

Part #: N695962 **Description:** SCREW.SPECIAL

#15 - WASHER,Qty Req in Model: 4

Part #: N697008 **Description:** WASHER

#16 - SPRING,Qty Req in Model: 2

Part #: N697009 **Description:** SPRING

#17 - SHAFT SA,Qty Req in Model: 1

Part #: N697015 **Description:** SHAFT SA

#18 - NUT M8,Qty Req in Model: 1

Part #: N697154 **Description:** NUT M8

#19 - ADJUSTER BLOCK,Qty Req in Model: 1

Part #: N697018 **Description:** ADJUSTER
BLOCK

#20 - SPRING,Qty Req in Model: 1

Part #: N697156 **Description:** SPRING

#21 - WASHER,Qty Req in Model: 1

Part #: N697155 **Description:** WASHER

#21 - WASHER,Qty Req in Model: 1

Part #: N697155 **Description:** WASHER

#22 - SHAFT SA,Qty Req in Model: 1

Part #: N694584 **Description:** SHAFT SA

#23 - PLATE,Qty Req in Model: 2

Part #: N697014 **Description:** PLATE

#24 - SCREW.SPECIAL,Qty Req in Model: 26
Part #: N697013 **Description:** SCREW.SPECIAL

#25 - PLATE,Qty Req in Model: 1
Part #: N697012 **Description:** PLATE

#31 - SHAFT,Qty Req in Model: 1
Part #: N697158 **Description:** SHAFT

#32 - PIN,Qty Req in Model: 2
Part #: N697159 **Description:** PIN

#33 - RETAINER,Qty Req in Model: 1
Part #: N697168 **Description:** RETAINER

#33 - RETAINER,Qty Req in Model: 1
Part #: N697168 **Description:** RETAINER

#34 - BRACKET,Qty Req in Model: 2
Part #: N697160 **Description:** BRACKET

#36 - SCREW.SPECIAL,Qty Req in Model: 4
Part #: N697169 **Description:** SCREW.SPECIAL

#37 - BEARING BLOCK,Qty Req in Model: 2
Part #: N697164 **Description:** BEARING BLOCK

#38 - SPRING,Qty Req in Model: 2
Part #: N697162 **Description:** SPRING

#39 - GEAR,Qty Req in Model: 2
Part #: N697165 **Description:** GEAR

#40 - KNOB,Qty Req in Model: 1
Part #: N697166 **Description:** KNOB

#41 - WASHER M10,Qty Req in Model: 3
Part #: N697161 **Description:** WASHER M10

#42 - NUT M10,Qty Req in Model: 2
Part #: N697167 **Description:** NUT M10

#100 - GUARD SA,Qty Req in Model: 1
Part #: N805868 **Description:** GUARD SA

#105 - COVER,Qty Req in Model: 1
Part #: N791856 **Description:** COVER

#201 - BRACKET SA,Qty Req in Model: 1
Part #: N773286 **Description:** BRACKET SA

#202 - LEAF SPRING,Qty Req in Model: 2
Part #: N696419 **Description:** LEAF SPRING

#203 - PLATE,Qty Req in Model: 2
Part #: N696416 **Description:** PLATE

#204 - SCREW,Qty Req in Model: 2
Part #: N696421 **Description:** SCREW

#205 - BOLT,Qty Req in Model: 1
Part #: N696422 **Description:** BOLT

#206 - CLIP,Qty Req in Model: 1
Part #: N696411 **Description:** CLIP

#207 - FENCE,Qty Req in Model: 1

Part #: N773351 **Description:** FENCE

#208 - SCREW.SPECIAL,Qty Req in Model: 2
Part #: N696399 **Description:** SCREW.SPECIAL

#209 - CLIP,Qty Req in Model: 1
Part #: N696412 **Description:** CLIP

#210 - BRACKET SA,Qty Req in Model: 1
Part #: N773292 **Description:** BRACKET SA

#211 - BRACKET,Qty Req in Model: 1
Part #: N696410 **Description:** BRACKET

#212 - FENCE,Qty Req in Model: 1
Part #: N696403 **Description:** FENCE

#213 - PLATE,Qty Req in Model: 2
Part #: N696408 **Description:** PLATE

#214 - SCREW,Qty Req in Model: 2
Part #: N696425 **Description:** SCREW

#215 - BRACKET,Qty Req in Model: 1
Part #: N696409 **Description:** BRACKET

#216 - SCREW,Qty Req in Model: 4
Part #: N696423 **Description:** SCREW

#217 - SCREW,Qty Req in Model: 2
Part #: N696417 **Description:** SCREW

#218 - PUSHER,Qty Req in Model: 1
Part #: N696426 **Description:** PUSHER

#220 - FENCE SA,Qty Req in Model: 1
Part #: N878752 **Description:** FENCE SA

#300 - MITRE FENCE,Qty Req in Model: 1
Part #: N696327 **Description:** MITRE FENCE

#400 - KICK BACK SA,Qty Req in Model: 1
Part #: N695964 **Description:** KICK BACK SA

#601 - SCREW,Qty Req in Model: 2
Part #: N697215 **Description:** SCREW

#602 - RING,Qty Req in Model: 1
Part #: N697223 **Description:** RING

#603 - WASHER,Qty Req in Model: 1
Part #: N697222 **Description:** WASHER

#604 - SCREW,Qty Req in Model: 2
Part #: N697221 **Description:** SCREW

#605 - CAP,Qty Req in Model: 1
Part #: N697218 **Description:** CAP

#606 - SPRING,Qty Req in Model: 1
Part #: N697216 **Description:** SPRING

#607 - NUT,Qty Req in Model: 1
Part #: N697217 **Description:** NUT

#608 - BRACKET,Qty Req in Model: 1

Part #: N805568 **Description:** BRACKET

#609 - SCREW,Qty Req in Model: 3

Part #: N697220 **Description:** SCREW

#610 - SCREW,Qty Req in Model: 2

Part #: N697226 **Description:** SCREW

#611 - RIVING KNIFE,Qty Req in Model: 1

Part #: N791852 **Description:** RIVING KNIFE

#612 - PLATE,Qty Req in Model: 1

Part #: N697214 **Description:** PLATE

#613 - WASHER LOCK,Qty Req in Model: 1

Part #: N697219 **Description:** WASHER LOCK

#614 - KNOB,Qty Req in Model: 1

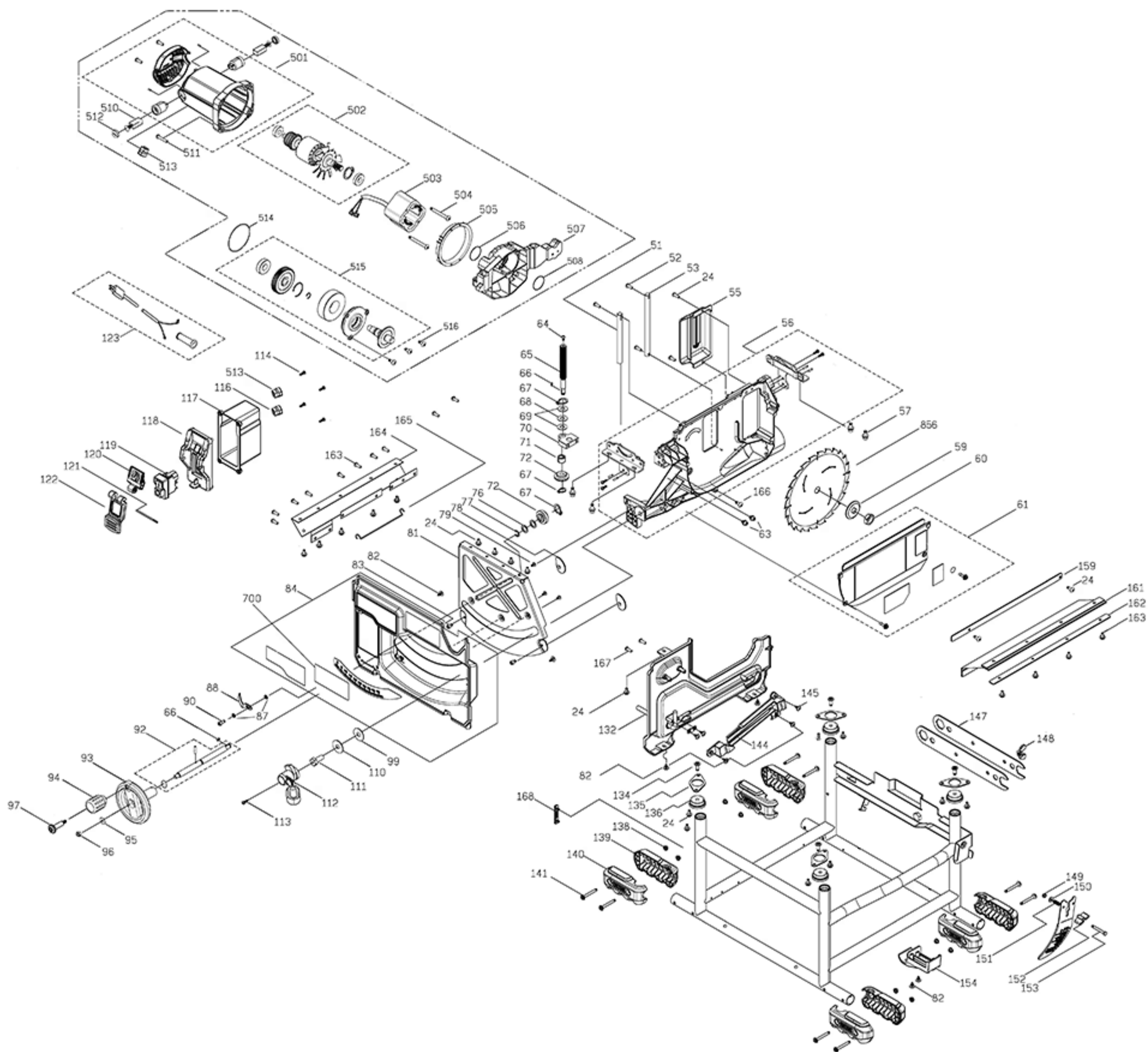
Part #: N697224 **Description:** KNOB

#800 - GREASE,Qty Req in Model: 1

Part #: 429954-00 **Description:** GREASE

#856 - SAW BLADE,Qty Req in Model: 1

Part #: DWA181440**Description:** SAW
BLADE



#76 - WASHER,Qty Req in Model: 2
Part #: N697194 **Description:** WASHER

#77 - RETAINER,Qty Req in Model: 1

Part #: N697168 **Description:** RETAINER

#77 - RETAINER,Qty Req in Model: 1

Part #: N697168 **Description:** RETAINER

#78 - CAM,Qty Req in Model: 2

Part #: N695358 **Description:** CAM

#79 - SCREW,Qty Req in Model: 3

Part #: N695595 **Description:** SCREW

#81 - PLATE,Qty Req in Model: 1

Part #: N695357 **Description:** PLATE

#82 - SCREW,Qty Req in Model: 8

Part #: N697179 **Description:** SCREW

#83 - SCREW,Qty Req in Model: 2

Part #: N695589 **Description:** SCREW

#84 - PANEL FRONT,Qty Req in Model: 1

Part #: N773329 **Description:** PANEL FRONT

#87 - WASHER M5,Qty Req in Model: 2

Part #: N695603 **Description:** WASHER M5

#88 - INDICATOR,Qty Req in Model: 1

Part #: N695604 **Description:** INDICATOR

#90 - SCREW,Qty Req in Model: 1

Part #: N695606 **Description:** SCREW

#92 - SHAFT SA,Qty Req in Model: 1

Part #: N697188 **Description:** SHAFT SA

#93 - WHEEL ADJUSTER,Qty Req in Model: 1

Part #: N695937 **Description:** WHEEL
ADJUSTER

#94 - KNOB,Qty Req in Model: 1

Part #: N695939 **Description:** KNOB

#95 - WASHER,Qty Req in Model: 1

Part #: N697155 **Description:** WASHER

#95 - WASHER,Qty Req in Model: 1

Part #: N697155 **Description:** WASHER

#96 - LOCK NUT,Qty Req in Model: 1

Part #: N695941 **Description:** LOCK NUT

#97 - HANDLE SCREW SA,Qty Req in Model: 1

Part #: N695940 **Description:** HANDLE SCREW
SA

#99 - WASHER PLASTIC,Qty Req in Model: 1

Part #: N695931 **Description:** WASHER
PLASTIC

#110 - WASHER,Qty Req in Model: 1

Part #: N695932 **Description:** WASHER

#111 - SHAFT SA,Qty Req in Model: 1

Part #: N695933 **Description:** SHAFT SA

#112 - HANDLE,Qty Req in Model: 1

Part #: N695934 **Description:** HANDLE

#113 - SCREW,Qty Req in Model: 1
Part #: N695935 **Description:** SCREW

#114 - SCREW,Qty Req in Model: 4
Part #: N714330 **Description:** SCREW

#116 - CORD PROTECTOR,Qty Req in Model: 1
Part #: N714351 **Description:** CORD
PROTECTOR

#117 - HOUSING SWITCH,Qty Req in Model: 1
Part #: N697176 **Description:** HOUSING
SWITCH

#118 - SWITCH SUPPORT,Qty Req in Model: 1
Part #: N697171 **Description:** SWITCH
SUPPORT

#119 - SWITCH,Qty Req in Model: 1
Part #: NA159336 **Description:** SWITCH

#120 - FLAP,Qty Req in Model: 1
Part #: N697172 **Description:** FLAP

#121 - LOCKING PIN,Qty Req in Model: 1
Part #: N697175 **Description:** LOCKING PIN

#122 - PADDLE,Qty Req in Model: 1
Part #: N697173 **Description:** PADDLE

#123 - CORD,Qty Req in Model: 1
Part #: N697177 **Description:** CORD

#132 - PANEL LH,Qty Req in Model: 1
Part #: N695597 **Description:** PANEL LH

#134 - SCREW,Qty Req in Model: 4
Part #: N695344 **Description:** SCREW

#135 - BRACKET,Qty Req in Model: 4
Part #: N694575 **Description:** BRACKET

#136 - BUMPER,Qty Req in Model: 4
Part #: N694577 **Description:** BUMPER

#138 - LOCK NUT,Qty Req in Model: 8
Part #: N695348 **Description:** LOCK NUT

#139 - FOOT,Qty Req in Model: 4
Part #: N715236 **Description:** FOOT

#140 - FOOT,Qty Req in Model: 4
Part #: N715237 **Description:** FOOT

#141 - SCREW.SPECIAL,Qty Req in Model: 8
Part #: N695347 **Description:** SCREW.SPECIAL

#144 - BRACKET,Qty Req in Model: 1
Part #: N695598 **Description:** BRACKET

#145 - SCREW,Qty Req in Model: 1
Part #: N733595 **Description:** SCREW

#147 - SPANNER,Qty Req in Model: 2
Part #: N695950 **Description:** SPANNER

#148 - WING NUT,Qty Req in Model: 1
Part #: N695949 **Description:** WING NUT

#149 - LOCK NUT,Qty Req in Model: 1
Part #: N695351 **Description:** LOCK NUT

#150 - WASHER,Qty Req in Model: 1
Part #: N695352 **Description:** WASHER

#151 - SPRING,Qty Req in Model: 1
Part #: N695355 **Description:** SPRING

#152 - KNOB,Qty Req in Model: 1
Part #: N695353 **Description:** KNOB

#153 - BOLT,Qty Req in Model: 1
Part #: N695354 **Description:** BOLT

#154 - BRACKET,Qty Req in Model: 1
Part #: N695349 **Description:** BRACKET

#159 - BAR,Qty Req in Model: 1
Part #: N697230 **Description:** BAR

#161 - GUARD,Qty Req in Model: 1
Part #: N697232 **Description:** GUARD

#162 - BAR,Qty Req in Model: 1
Part #: N697231 **Description:** BAR

#163 - SCREW,Qty Req in Model: 18
Part #: N714337 **Description:** SCREW

#164 - GUARD,Qty Req in Model: 1
Part #: N694563 **Description:** GUARD

#165 - PLATE,Qty Req in Model: 1
Part #: N743010 **Description:** PLATE

#166 - SCREW,Qty Req in Model: 1
Part #: N719271 **Description:** SCREW

#168 - BUMPER,Qty Req in Model: 1
Part #: N765793 **Description:** BUMPER

#168 - BUMPER,Qty Req in Model: 1
Part #: N765793 **Description:** BUMPER

#501 - FIELD CASE,Qty Req in Model: 1
Part #: N773307 **Description:** FIELD CASE

#502 - ARMATURE SA,Qty Req in Model: 1
Part #: N695447 **Description:** ARMATURE SA

#503 - FIELD,Qty Req in Model: 1
Part #: N695448 **Description:** FIELD

#504 - SCREW,Qty Req in Model: 2
Part #: N713246 **Description:** SCREW

#505 - BAFFLE FAN,Qty Req in Model: 1
Part #: N397490 **Description:** BAFFLE FAN

#506 - O RING,Qty Req in Model: 1
Part #: N705198 **Description:** O RING

#507 - GEAR CASE,Qty Req in Model: 1
Part #: N695375 **Description:** GEAR CASE

#508 - O RING,Qty Req in Model: 1
Part #: N705196 **Description:** O RING

#510 - BRUSH,Qty Req in Model: 2
Part #: N713244 **Description:** BRUSH

#511 - SCREW,Qty Req in Model: 4
Part #: N713211 **Description:** SCREW

#512 - BRUSH CAP,Qty Req in Model: 2
Part #: N713238 **Description:** BRUSH CAP

#513 - CORD PROTECTOR,Qty Req in Model: 2
Part #: N713241 **Description:** CORD
PROTECTOR

#514 - O RING,Qty Req in Model: 1
Part #: N696108 **Description:** O RING

#515 - ARBOR SA,Qty Req in Model: 1
Part #: N695450 **Description:** ARBOR SA

#516 - SCREW.SPECIAL,Qty Req in Model: 3
Part #: N694571 **Description:** SCREW.SPECIAL

#516 - SCREW.SPECIAL,Qty Req in Model: 3
Part #: N694571 **Description:** SCREW.SPECIAL

#856 - SAW BLADE,Qty Req in Model: 1
Part #: DWA181440**Description:** SAW
BLADE