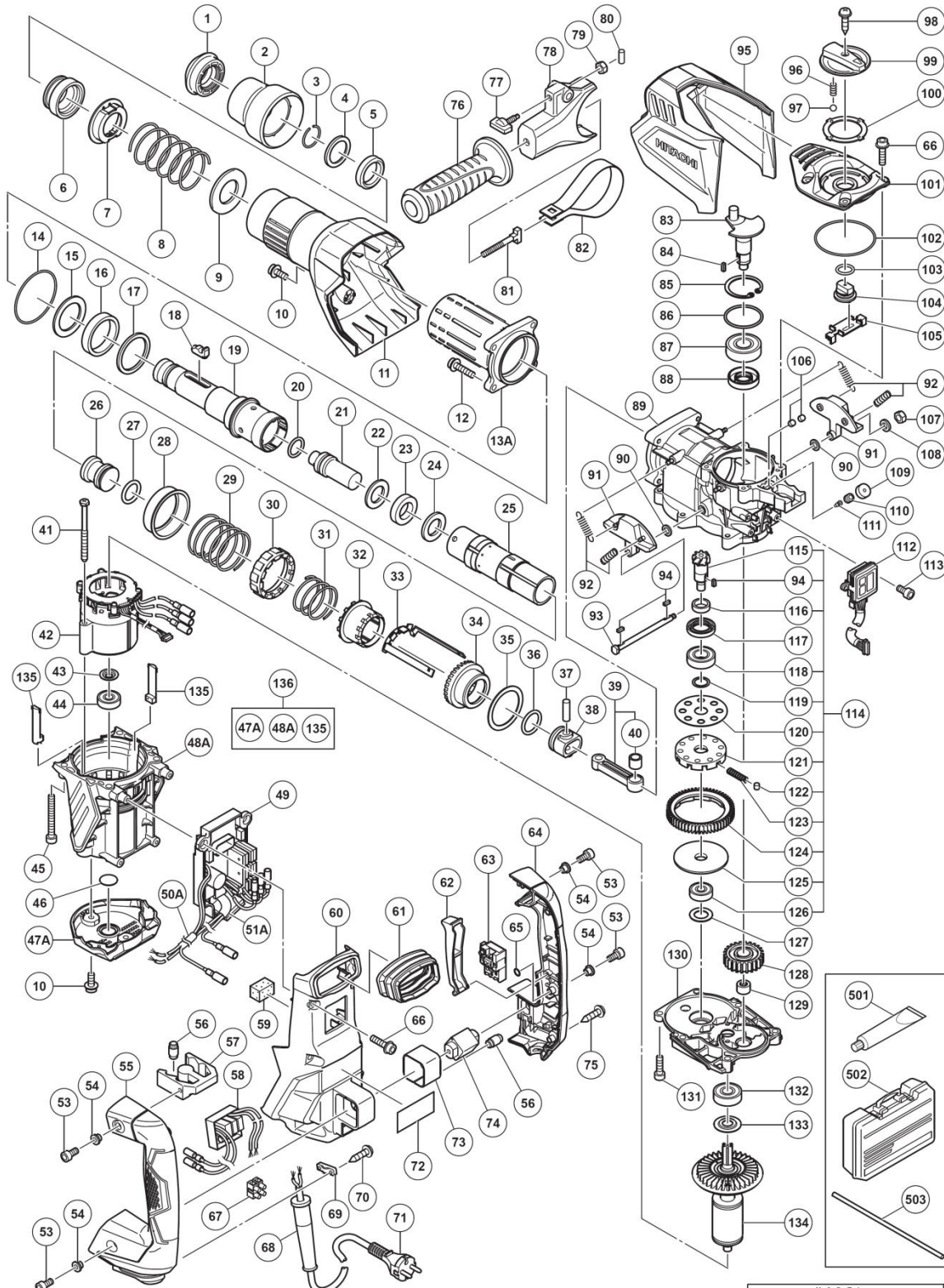


ELECTRIC TOOL PARTS LIST

■ BRUSHLESS ROTARY HAMMER
Model DH 40MEY

2016 • 05 • 19
(E2b)



PARTS

DH40MEY

ITEM NO.	CODE NO.	DESCRIPTION	NO. USED	REMARKS
1	337562	FRONT CAP	1	
2	337560	GRIP	1	
3	318590	STOPPER RING	1	
4	337561	RETAINER WASHER	1	
5	337559	RETAINER DAMPER (A)	1	
6	337558	BIT LOCK HOLDER	1	
7	337555	THRUST PLATE	1	
8	337556	RETAINER SPRING	1	
9	337557	SPRING HOLDER (A)	1	
10	998471	HEX. SOCKET HD. BOLT (W/FLANGE) M5X12	3	
11	337553	CYLINDER CASE COVER	1	
12	991712	HEX. SOCKET HD. BOLT (W/FLANGE) M6X25	4	
13A	337552	CYLINDER CASE	1	
14	956996	O-RING (1AS-60)	1	
15	337549	RETAINER DAMPER HOLDER	1	
16	337548	RETAINER DAMPER (B)	1	
17	337547	RETAINER DAMPER WASHER	1	
18	337554	BIT LOCK	2	
19	337536	RETAINER SLEEVE	1	
20	313396	O-RING (C)	1	
21	337537	SECOND HAMMER	1	
22	337538	DAMPER WASHER	1	
23	321835	DAMPER	1	
24	337539	DAMPER HOLDER	1	
25	337540	CYLINDER	1	
26	337541	STRIKER	1	
27	986104	O-RING	1	
28	337550	SPRING HOLDER (B)	1	
29	337551	LOCK SPRING	1	
30	331535	LOCK SLEEVE	1	
31	337542	CLUTCH SPRING	1	
32	337543	CLUTCH	1	
33	337544	SLIDER	1	
34	337545	BEVEL GEAR	1	
35	337546	THRUST WASHER	1	
36	986104	O-RING	1	
37	980708	PISTON PIN	1	
38	326369	PISTON	1	
39	337535	CONNECTING ROD ASS'Y	1	INCLUD.40
40	335303	NEEDLE BEARING	1	
41	953174	HEX. HD. TAPPING SCREW D5X55	2	
*42	340884	STATOR SENSOR PCB SET 100V-127V	1	
*42	340885E	STATOR SENSOR PCB SET 220V-240V	1	
43	958915	WASHER (A)	1	
44	629VVM	BALL BEARING 629VVC2PS2L	1	
45	986940	SEAL LOCK HEX. SOCKET HD. BOLT M6X45	4	
46	333263	DUST SEAL	1	
47A	370002	TAIL COVER	1	SINCE 10.2015
48A	370001	HOUSING	1	SINCE 10.2015
*49	337579	CONTROLLER SET 100V-127V	1	
50A	370074	VINYL TUBE L50	1	
51A	370073	VINYL TUBE L35	1	
53	991690	SEAL LOCK HEX. SOCKET HD. BOLT M5X12	4	
54	991711	DISTANCE PIECE (B)	4	
55	337590	HANDLE (B)	1	
56	310124	HANDLE DAMPER	8	
57	310123	TRANSATORY UNIT	1	
*58	337585	FILTER PCB SET 100V-127V	1	
59	338447	SPONGE (B)	1	

Parts

DH40MEY

ITEM NO.	CODE NO.	DESCRIPTION	NO. USED	REMARKS
60	337573	BACK COVER	1	
61	337591	BELLOWS	1	
62	337588	TRIGGER	1	
63	337587	SWITCH	1	
64	337589	HANDLE (A)	1	
65	320218	O-RING	1	
66	994192	HEX. SOCKET HD. BOLT (W/FLANGE) M5X16	10	
67	958308Z	PILLAR TERMINAL (A)	1	
*68	958049	CORD ARMOR D8.2	1	
*68	940778	CORD ARMOR D10.7	1	
69	960266	CORD CLIP	1	
70	984750	TAPPING SCREW (W/FLANGE) D4X16	2	
*71	500390Z	CORD	1	(CORD ARMOR D10.7)
*71	500434Z	CORD	1	(CORD ARMOR D10.7) FOR USA.CAN.MEX
*71	500446Z	CORD	1	(CORD ARMOR D10.7) FOR GBR (230V)
*71	500465Z	CORD	1	(CORD ARMOR D10.7) FOR GBR (110V)
*71	500439Z	CORD	1	(CORD ARMOR D8.2) FOR AUS
*71	500408Z	CORD	1	(CORD ARMOR D8.2) FOR NZL
*71	500235Z	CORD	1	(CORD ARMOR D8.2) FOR INA
*71	500424Z	CORD	1	(CORD ARMOR D8.2) FOR MAL
72		NAME PLATE	1	
73	337574	HOLDER	1	
74	326377	HANDLE SHAFT	1	
75	301653	TAPPING SCREW (W/FLANGE) D4X20 (BLACK)	3	
76	330209	SIDE HANDLE	1	
77	337577	WING BOLT	1	
78	337576	MOUNT	1	
79	949556	NUT M6 (10 PCS.)	1	
80	949859	ROLL PIN D2X8 (10 PCS.)	1	
81	331247	HANDLE BOLT	1	
82	337575	BAND	1	
83	337531	CRANK SHAFT	1	
84	940533	FEATHER KEY 3X3X10	1	
85	948391	RETAINING RING FOR D40 HOLE	1	
86	996363	O-RING (S-40)	1	
87	6203DD	BALL BEARING 6203DDCMPS2L	1	
88	321274	OIL SEAL (B)	1	
89	337530	CRANK CASE	1	
90	337571	WASHER	2	
91	337569	WEIGHT	2	
92	337572	WEIGHT SPRING	4	
93	337570	WEIGHT SHAFT	1	
94	944109	FEATHER KEY 3X3X8	3	
95	337592	CRANK CASE COVER	1	
96	337567	LEVER SPRING	1	
97	959149	STEEL BALL D4.76 (10 PCS.)	1	
98	307811	TAPPING SCREW (W/FLANGE) D4X16 (BLACK)	1	
99	337566	CHANGE LEVER	1	
100	337568	GUIDE PLATE	1	
101	337564	CRANK COVER	1	
102	877315	CYLINDER O-RING (I.D 63.9)	1	
103	338312	O-RING	1	
104	337565	LEVER SHAFT	1	
105	337563	CHANGE PLATE	1	
106	338315	FELT (B)	2	
107	949555	NUT M5 (10 PCS.)	1	
108	949424	WASHER M5 (10 PCS.)	1	
109	338314	FELT (A)	1	
110	338313	CAP SCREW	1	
111	995396	VALVE	1	

