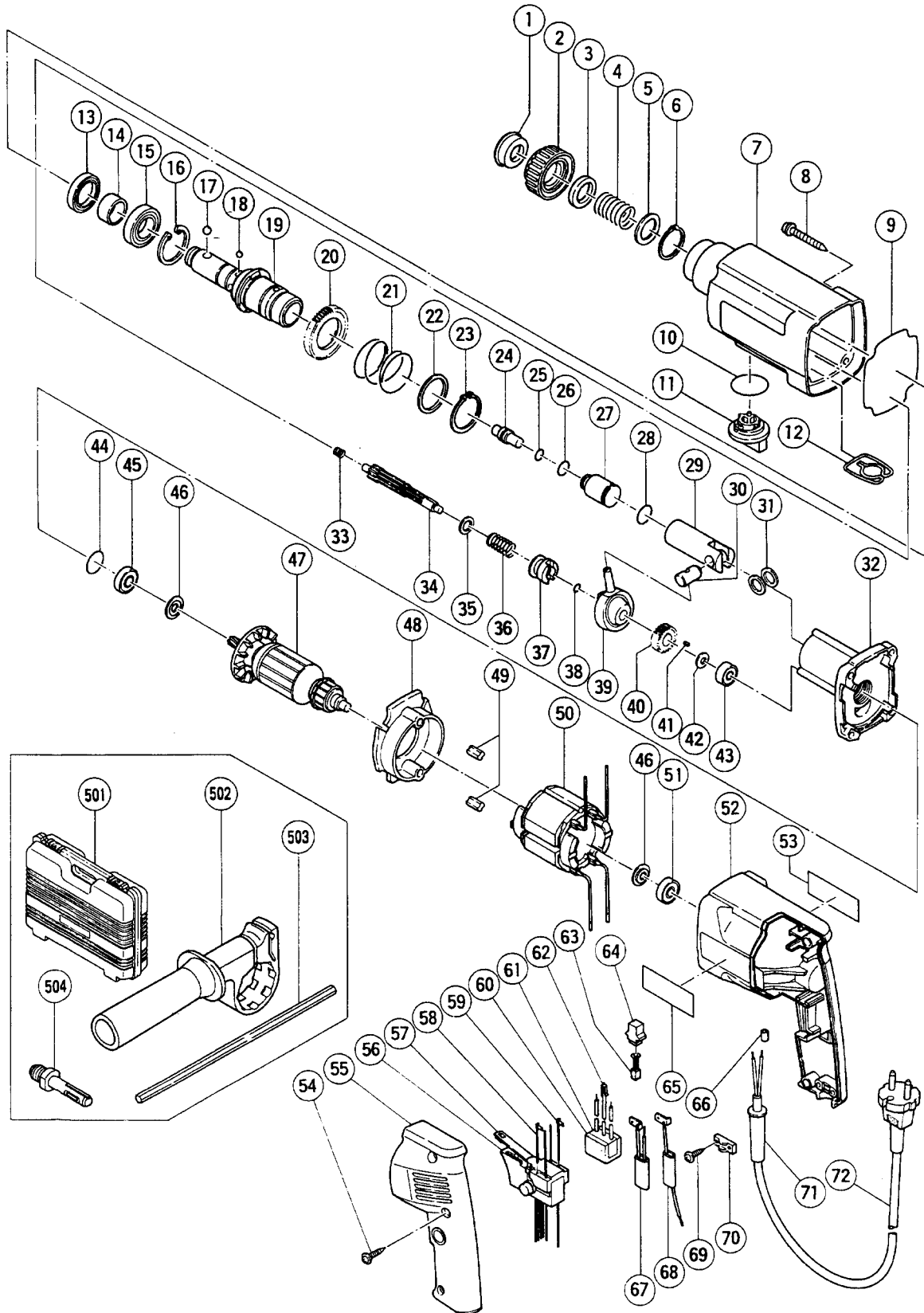


ELECTRIC TOOL PARTS LIST

■ HAMMER DRILL
Model DH 24VB

1994 • 3 • 20
(E1)



PARTS

DH 24VB

ITEM NO.	CODE NO.	DESCRIPTION	NO. USED	REMARKS
1	306-345	FRONT CAP	1	
2	306-992	GRIP	1	
3	306-343	BALL HOLDER	1	
4	306-342	HOLDER SPRING	1	
5	984-118	WASHER (B)	1	
6	939-547	RETAINING RING FOR D20 SHAFT (10 PCS.)	1	
7	307-689	GEAR COVER	1	
8	301-654	TAPPING SCREW (W/FLANGE) D5X35	4	
9	301-657	RUBBER SEAL	1	
10	301-684	O - RING (S - 30)	1	
11	301-651	CHANGE LEVER	1	
12	301-685	SPRING (C)	1	
13	307-688	OIL SEAL	1	
14	307-690	SLEEVE	1	
15	690-4CM	BALL BEARING 6904CM	1	
16	986-147	RETAINING RING FOR D37 HOLE	1	
17	959-156	STEEL BALL D7.0 (10 PCS.)	2	
18	959-154	STEEL BALL D5.556 (10 PCS.)	4	
19	306-987	CYLINDER	1	
20	301-677	SECOND GEAR	1	
21	301-678	SPRING (A)	1	
22	301-679	WASHER (A)	1	
23	948-310	RETAINING RING FOR D30 SHAFT	1	
24	301-671	SECOND HAMMER	1	
25	301-672	O - RING (B)	1	
26	301-680	O - RING (FPM 810)	1	
27	301-669	STRIKER	1	
28	301-670	O - RING (A)	1	
29	301-668	PISTON	1	
30	301-666	PISTON PIN	1	
31	301-667	WASHER (C)	2	
32	301-658	INNER COVER	1	
33	301-664	SPRING (B)	1	
34	301-658	SECOND SHAFT	1	
35	301-659	WASHER (B)	1	
36	301-660	CLUTCH SPRING	1	
37	301-661	CLUTCH	1	
38	992-912	O - RING (S - 8)	1	
39	306-990	RECIPROCATING BEARING	1	
40	301-665	FIRST GEAR	1	
41	944-109	FEATHER KEY 3X3X8	1	
42	301-663	SPACER	1	
43	626-VVM	BALL BEARING 626VVMC2ERPS2S	1	
44	876-798	O - RING (P - 22)	1	
45	608-DDM	BALL BEARING 608DDMC2EPS2S	1	
46	982-631	WASHER (A)	2	
* 47	360-149C	ARMATURE 110V - 115V	1	
* 47	360-149D	ARMATURE 120V - 127V	1	
* 47	360-149E	ARMATURE 220V	1	
* 47	360-149F	ARMATURE 230V - 240V	1	
48	301-655	FAN GUIDE ASS'Y	1	INCLUD.49

*: ALTERNATIVE PARTS

STANDARD ACCESSORIES

DH 24VB

ITEM NO.	CODE NO.	DESCRIPTION	NO. USED	REMARKS
501	307-786	CASE	1	
502	307-894	SIDE HANDLE	1	
503	303-709	DEPTH GAUGE	1	
* 504	303-824	CHUCK ADAPTER (D) (SDS PLUS)	1	FOR AUS

OPTIONAL ACCESSORIES

ITEM NO.	CODE NO.	DESCRIPTION	NO. USED	REMARKS
601	306-369	DRILL BIT (SLENDER SHAFT) D3.4X90	1	
602	306-368	DRILL BIT (SLENDER SHAFT) D3.5X90	1	
603	306-370	ADAPTER FOR SLENDER SHAFT (SDS PLUS)	1	
604	944-460	TAPER SHANK DRILL BIT D11X100	1	
605	944-461	TAPER SHANK DRILL BIT D12.3X110	1	
606	993-038	TAPER SHANK DRILL BIT D12.7X110	1	
607	944-462	TAPER SHANK DRILL BIT D14.3X110	1	
608	944-500	TAPER SHANK DRILL BIT D14.5X110	1	
609	944-463	TAPER SHANK DRILL BIT D17.5X120	1	
610	944-464	TAPER SHANK DRILL BIT D21.5X140	1	
611	303-617	TAPER SHANK ADAPTER (SDS PLUS) NO.1	1	
612	303-618	TAPER SHANK ADAPTER (SDS PLUS) NO.2	1	
613	303-619	A – TAPER SHANK ADAPTER (SDS PLUS)	1	
614	303-620	B – TAPER SHANK ADAPTER (SDS PLUS)	1	
615	944-477	COTTER	1	
616	303-332	HAMMER DRILL CHUCK SET 13MM	1	INCLUD.617,618
617	303-334	CHUCK HANDLE	1	
618	303-335	RUBBER CAP	1	
619	302-976	ANCHOR SETTING ADAPTER A (SDS+)W1/4X260L	1	
620	302-975	ANCHOR SETTING ADAPTER A(SDS+)W5/16X260L	1	
621	303-621	ANCHOR SETTING ADAPTER A (SDS+)W3/8X160L	1	
622	302-974	ANCHOR SETTING ADAPTER A (SDS+)W3/8X260L	1	
623	302-979	ANCHOR SETTING ADAPTER B (SDS+)W1/4X260L	1	
624	302-978	ANCHOR SETTING ADAPTER B(SDS+)W5/16X260L	1	
625	303-622	ANCHOR SETTING ADAPTER B (SDS+)W3/8X160L	1	
626	302-977	ANCHOR SETTING ADAPTER B (SDS+)W3/8X260L	1	
627	971-794	ANCHOR SETTING ADAPTER A W1/4" (MANUAL)	1	
628	971-795	ANCHOR SETTING ADAPTER A W5/16" (MANUAL)	1	
629	971-796	ANCHOR SETTING ADAPTER A W3/8" (MANUAL)	1	
630	971-797	ANCHOR SETTING ADAPTER A W1/2" (MANUAL)	1	
631	971-798	ANCHOR SETTING ADAPTER A W5/8" (MANUAL)	1	
632	971-799	ANCHOR SETTING ADAPTER B W1/4" (MANUAL)	1	
633	971-800	ANCHOR SETTING ADAPTER B W5/16" (MANUAL)	1	
634	971-801	ANCHOR SETTING ADAPTER B W3/8" (MANUAL)	1	
635	971-802	ANCHOR SETTING ADAPTER B W1/2" (MANUAL)	1	
636	971-803	ANCHOR SETTING ADAPTER B W5/8" (MANUAL)	1	

*: ALTERNATIVE PARTS

