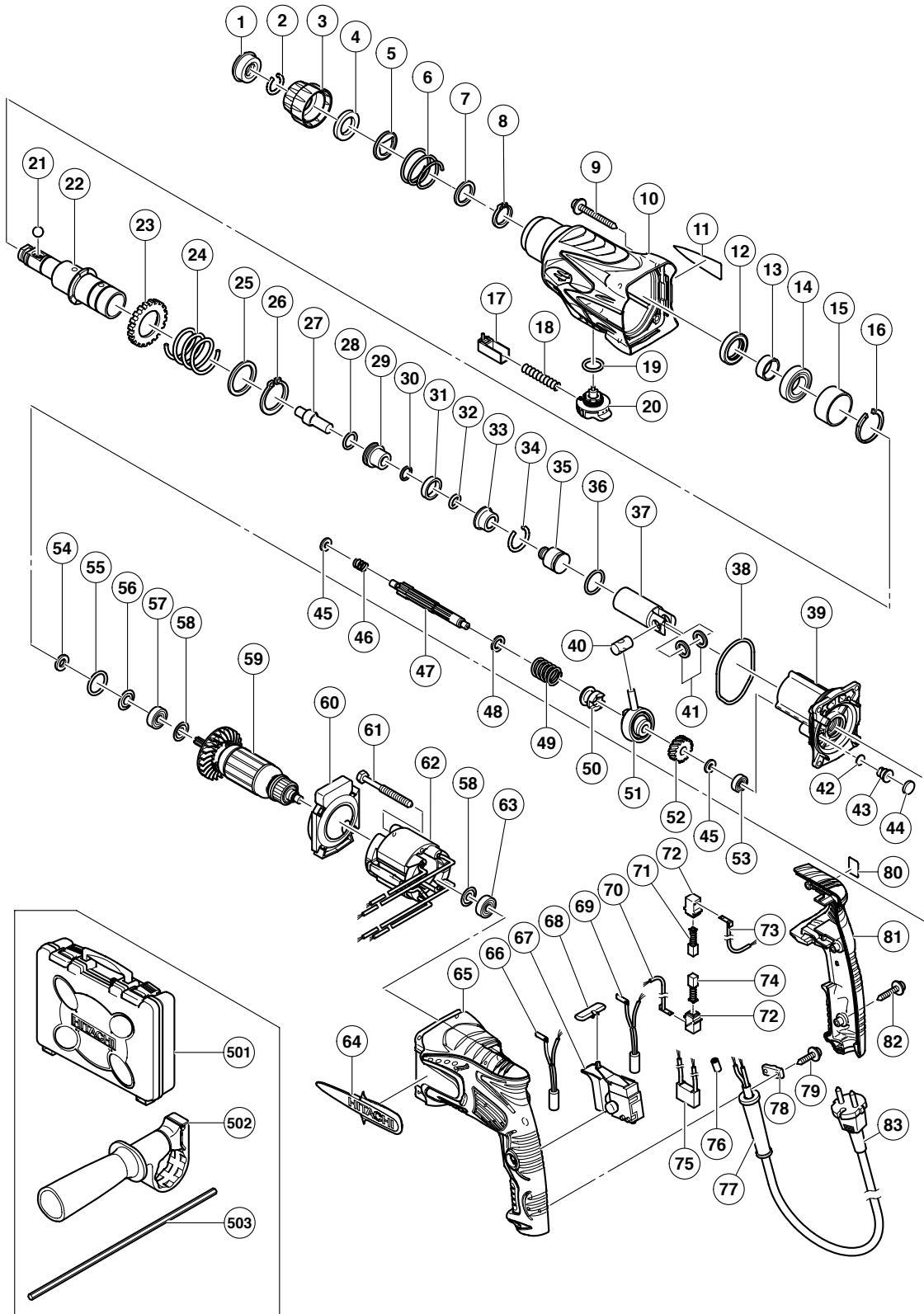


ELECTRIC TOOL PARTS LIST

■ ROTARY HAMMER Model DH 24PB3

2005 · 5 · 20

(E1)



PARTS

DH 24PB3

ITEM NO.	CODE NO.	DESCRIPTION	NO. USED	REMARKS
1	306-345	FRONT CAP	1	
2	306-340	STOPPER RING	1	
3	324-527	GRIP	1	
4	324-528	BALL HOLDER	1	
5	324-526	HOLDER PLATE	1	
6	322-812	HOLDER SPRING	1	
7	984-118	WASHER (B)	1	
8	939-547	RETAINING RING FOR D20 SHAFT (10 PCS.)	1	
9	301-654	TAPPING SCREW (W/FLANGE) D5X35	4	
10	324-546	GEAR COVER	1	
11		NAME PLATE	1	
12	307-688	OIL SEAL	1	
13	322-815	SLEEVE	1	
14	690-4DD	BALL BEARING 6904DDPS2L	1	
15	324-522	SLEEVE (A)	1	
16	322-813	RETAINING RING 37MM	1	
17	324-530	PUSHING BUTTON	1	
18	317-223	PUSHING SPRING	1	
19	878-885	O-RING (S-18)	1	
20	324-529	CHANGE LEVER	1	
21	959-156	STEEL BALL D7.0 (10 PCS.)	1	
22	322-814	CYLINDER	1	
23	301-677	SECOND GEAR	1	
24	301-678	SPRING (A)	1	
25	301-679	WASHER (A)	1	
26	948-310	RETAINING RING FOR D30 SHAFT	1	
27	324-525	SECOND HAMMER	1	
28	944-486	O-RING (1AP-20)	1	
29	324-523	HAMMER HOLDER	1	
30	322-802	O-RING (B)	1	
31	322-805	DAMPER (A)	1	
32	322-808	O-RING (C)	1	
33	324-524	DAMPER HOLDER	1	
34	322-807	STOPPER RING	1	
35	324-535	STRIKER	1	
36	322-834	O-RING (I.D. 16)	1	
37	324-534	PISTON	1	
38	322-793	O-RING (I.D. 66.5)	1	
39	324-542	INNER COVER ASS'Y	1	INCLUD. 42-44
40	322-798	PISTON PIN	1	
41	322-799	WASHER (C)	2	
42	324-543	FELT PACKING (A)	1	
43	324-545	VALVE	1	
44	324-544	FELT PACKING (B)	1	
45	322-795	SPACER	2	
46	322-796	SPRING (B)	1	
47	322-794	SECOND SHAFT	1	
48	301-659	WASHER (B)	1	
49	301-660	CLUTCH SPRING	1	
50	324-532	CLUTCH	1	
51	324-533	RECIPROCATING BEARING	1	

PARTS

DH 24PB3

ITEM NO.	CODE NO.	DESCRIPTION	NO. USED	REMARKS
52	322-797	FIRST GEAR	1	
53	626-VVM	BALL BEARING 626VVC2PS2L	1	
54	322-816	FELT PACKING	1	
55	876-796	O-RING (P-22)	1	
56	322-818	PACKING WASHER	1	
57	608-DDM	BALL BEARING 608DDC2PS2L	1	
58	982-631	WASHER (A)	2	
* 59	360-720U	ARMATURE ASS'Y 110V-120V	1	INCLUD. 57, 58, 63
* 59	360-720E	ARMATURE 220V-230V	1	
* 59	360-720F	ARMATURE 240V	1	
60	324-531	FAN GUIDE	1	
61	961-672	HEX. HD. TAPPING SCREW D4X50	2	
* 62	340-635C	STATOR 110V-120V	1	
* 62	340-635E	STATOR 220V-230V	1	
* 62	340-635F	STATOR 240V	1	
63	608-VVM	BALL BEARING 608VVC2PS2L	1	
64	324-539	HITACHI PLATE	1	
65	324-553	HOUSING	1	
* 66	324-549	CHOKE COIL (A) BROWN	1	EXCEPT FOR TPE, THA, INA, SYR, SIN, HKG, KUW, GBR (110V), USA, CAN, IND
* 66	324-550	CHOKE COIL (A) BROWN	1	FOR TPE, GBR (110V)
67	324-536	SWITCH (1P PILLAR TYPE)	1	
68	322-853	PUSHING BUTTON	1	
* 69	324-551	CHOKE COIL (A) BLUE	1	EXCEPT FOR TPE, THA, INA, SYR, SIN, HKG, KUW, GBR (110V), USA, CAN, IND
* 69	324-552	CHOKE COIL (A) BLUE	1	FOR TPE, GBR (110V)
* 70	324-538	INTERNAL WIRE (A) (BLUE)	1	FOR THA, INA, SYR, SIN, HKG, KUW, USA, CAN, IND
71	999-041	CARBON BRUSH (1 PAIR)	1	
72	955-203	BRUSH HOLDER	2	
* 73	324-537	INTERNAL WIRE (A) (BROWN)	1	FOR THA, INA, SYR, SIN, HKG, KUW, USA, CAN, IND
74	999-072	CARBON BRUSH (AUTO STOP TYPE) (1 PAIR)	1	
* 75	930-039	NOISE SUPPRESSOR	1	FOR TPE, NZL, AUS, GBR, SAF, EUROPE, FIN, NOR, SWE, DEN, AUT, SUI, CHN, KOR
* 76	981-373	TUBE (D)	2	FOR CORD
* 77	953-327	CORD ARMOR D8.8	1	
* 77	938-051	CORD ARMOR D10.1	1	
78	937-631	CORD CLIP	1	
79	984-750	TAPPING SCREW (W/FLANGE) D4X16	2	
80		LABEL (WEEE)	1	
81	324-554	HANDLE COVER	1	
82	301-653	TAPPING SCREW (W/FLANGE) D4X20 (BLACK)	3	
* 83	500-390Z	CORD	1	(CORD ARMOR D8.8)
* 83	500-245Z	CORD	1	(CORD ARMOR D10.1) FOR SYR
* 83	500-424Z	CORD	1	(CORD ARMOR D8.8) FOR SIN, KUW
* 83	500-239Z	CORD	1	(CORD ARMOR D10.1) FOR THA
* 83	500-235Z	CORD	1	(CORD ARMOR D8.8) FOR INA, IND
* 83	500-408Z	CORD	1	(CORD ARMOR D8.8) FOR NZL, AUS
* 83	500-249Z	CORD	1	(CORD ARMOR D8.8) FOR USA, CAN
* 83	323-974	CORD	1	(CORD ARMOR D10.1) FOR TPE
* 83	500-440Z	CORD	1	(CORD ARMOR D8.8) FOR HKG
* 83	500-391Z	CORD	1	(CORD ARMOR D8.8) FOR SUI

STANDARD ACCESSORIES

DH 24PB3

ITEM NO.	CODE NO.	DESCRIPTION	NO. USED	REMARKS
501	324-555	CASE	1	
502	324-548	SIDE HANDLE	1	
* 503	303-709	DEPTH GAUGE	1	
* 503	310-331	DEPTH GAUGE	1	FOR USA, CAN

OPTIONAL ACCESSORIES

ITEM NO.	CODE NO.	DESCRIPTION	NO. USED	REMARKS
601	981-840	GREASE (A) FOR HAMMER. HAMMER DRILL (30G)	1	
602	308-471	GREASE FOR HAMMER. HAMMER DRILL (70G)	1	
603	980-927	GREASE FOR HAMMER. HAMMER DRILL (500G)	1	
604	306-885	DUST COLLECTOR (B) ASS'Y	1	INCLUD. 605, 613
605	986-802	DUST COLLECTOR ASS'Y	1	INCLUD. 606-612
606	986-803	DUST COVER	1	
607	986-804	SEAL COVER	1	
608	948-310	RETAINING RING FOR D30 SHAFT	1	
609	958-063	WASHER	1	
610	959-150	STEEL BALL D6.35 (10 PCS.)	19	
611	986-805	OUTER RACE	1	
612	986-806	SOCKET	1	
613	306-910	SOCKET ADAPTER (B)	1	
614	971-787	DUST CUP	1	
615	931-844	STOPPER	1	
616	321-814	DRILL CHUCK 13VLRB-D	1	INCLUD. 617
617	995-344	FLAT HD. SCREW (A) (LEFT HAND) M6X25	1	
618	321-813	DRILL CHUCK 13VLD-D	1	
619	971-511Z	+ DRIVER BIT (A) NO. 2 25L	1	
620	971-512Z	+ DRIVER BIT (A) NO. 3 25L	1	
621	944-477	COTTER	1	
622	982-684	CENTER PIN (A) 109L FOR CORE BIT D32-38	1	
623	982-685	CENTER PIN (B) 104L FOR CORE BIT D45-90	1	
624	982-672	CORE BIT (A) 25MM	1	
625	982-673	CORE BIT (A) 29MM	1	
626	982-674	CORE BIT (A) 32MM	1	INCLUD. 627
627	982-686	GUIDE PLATE (FOR CORE BIT 32MM)	1	
628	982-675	CORE BIT (A) 35MM	1	INCLUD. 629
629	982-687	GUIDE PLATE (FOR CORE BIT 35MM)	1	
630	982-676	CORE BIT (A) 38MM	1	INCLUD. 631
631	982-688	GUIDE PLATE (FOR CORE BIT 38MM)	1	
632	982-677	CORE BIT (B) 45MM	1	INCLUD. 633
633	982-689	GUIDE PLATE (FOR CORE BIT 45MM)	1	
634	982-678	CORE BIT (B) 50MM	1	INCLUD. 635
635	982-690	GUIDE PLATE (FOR CORE BIT 50MM)	1	
636	971-794	ANCHOR SETTING ADAPTER A W1/4" (MANUAL)	1	
637	971-795	ANCHOR SETTING ADAPTER A W5/16" (MANUAL)	1	
638	971-796	ANCHOR SETTING ADAPTER A W3/8" (MANUAL)	1	
639	971-797	ANCHOR SETTING ADAPTER A W1/2" (MANUAL)	1	
640	971-798	ANCHOR SETTING ADAPTER A W5/8" (MANUAL)	1	
641	971-799	ANCHOR SETTING ADAPTER B W1/4" (MANUAL)	1	

