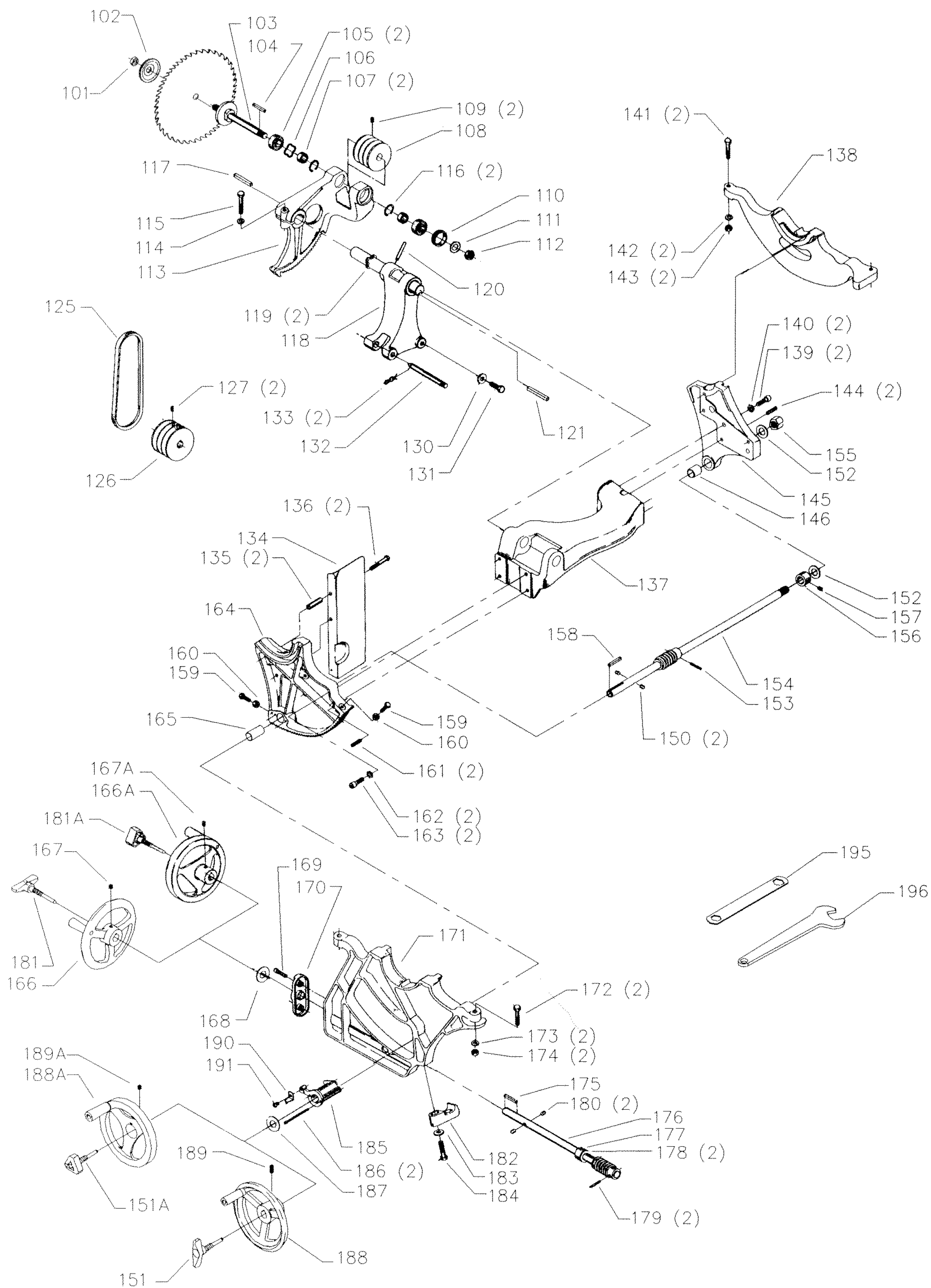


REPLACEMENT PARTS

REF NO	<u>PART NUMBER</u>	<u>DESCRIPTION</u>
*	34-895	MITER GAGE, CONST OF:
1	422-02-074-0001	HOLE PLUG
2	422-02-060-0003	HANDLE
3	904-07-010-5555	1/4" FIBER WASHER
4	422-01-355-0004	MITER GAGE BODY, INCL:
5	901-04-150-1181	1/4-28 X 3/16" HEX SOC SET SCREW
6	901-04-150-9428	#08-32 X 1/2" HEX SOC SET SCREW
7	422-01-075-0001	POINTER
8	422-04-004-0001	BAR, INCL:
9	422-01-088-0004	STOP LINK
10	901-04-150-1181	1/4-28 X 3/16" HEX SOC SET SCREW
11	422-01-112-0001	SCREW
12	422-04-072-0001	PLATE
13	901-02-030-5750	1/4-28 X 5/16" FLAT HD SCREW
25	43-349	EXTENSION WING, INCL:
26	901-01-060-9964	7/16-20 X 1 1/4" HEX HD SCREW
27	904-10-031-2097	WASHER
28	34-154	STANDARD INSERT, INCL:
29	901-04-461-5297	1/4-28 X 3/8" HEX SOC SET SCREW
30	422-04-391-0003	TABLE
31	422-04-318-0003	CABINET ASSY, INCL:
32	1087794	RIVET
33	422-04-132-0002	TILT SCALE
34	1087794	RIVET
35	422-04-137-0005	NAMEPLATE
36	36-828	HINGED MOTOR COVER, INCL:
37	901-05-213-1498	#10 X 1/2" HEX WASHER HD SCREW
38	400-06-416-0001	GASKET
39	537-85-004-0001	LATCH W/BUSHING & NUT
40	422-04-752-0175	WARNING LABEL
41	422-04-026-0003	DUST CHUTE
42	438-01-011-0021	INSULATOR
45	904-10-031-2097	WASHER
46	901-03-010-1487	7/16-20 X 3/4" HEX SOC HD SCREW
47	438-01-011-0065	PLUG
48	438-01-011-0074	HOLE PLUG - 2" DIA
49	901-11-020-0834	5/16-18 X 3/4" CARRIAGE HD SCREW
50	422-04-305-0001	SUB BASE
51	904-01-010-1620	FLAT WASHER
52	904-02-010-1703	5/16" LOCK WASHER
53	902-02-040-1303	5/16-18 SQUARE NUT
54	422-04-014-0034	BRACKET
55	901-05-213-1498	#10 X 1/2" HEX WASHER HD SCREW
56	422-35-014-0001	MITER GAGE HOLDER
57	901-05-213-1498	#10 X 1/2" HEX WASHER HD SCREW
58	422-35-060-0001	WRENCH HOOK
60	955-03-010-0001	1/8" HEX WRENCH
61	955-03-010-2155	5/64" HEX WRENCH

* NOT SHOWN ASSEMBLED

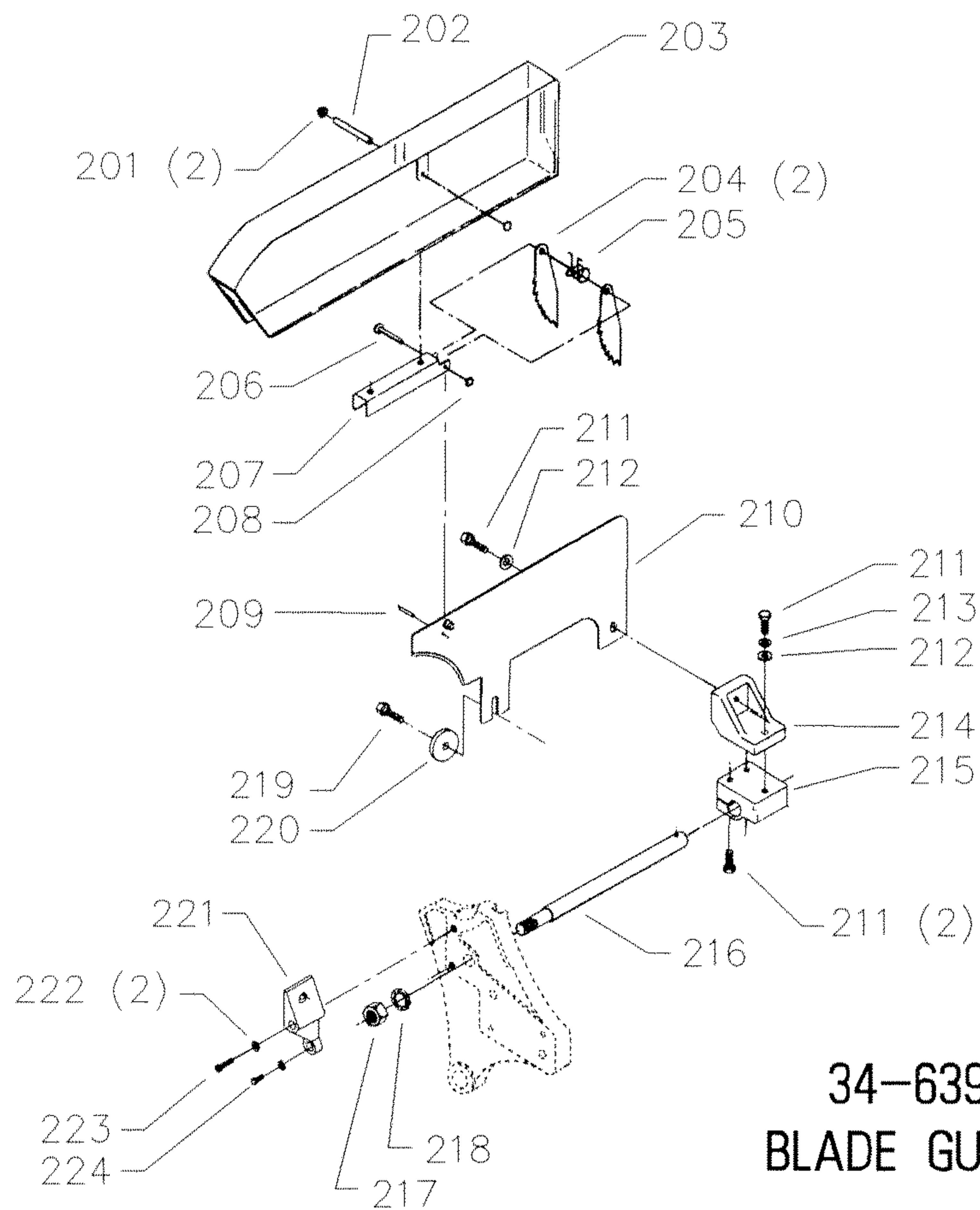


REPLACEMENT PARTS

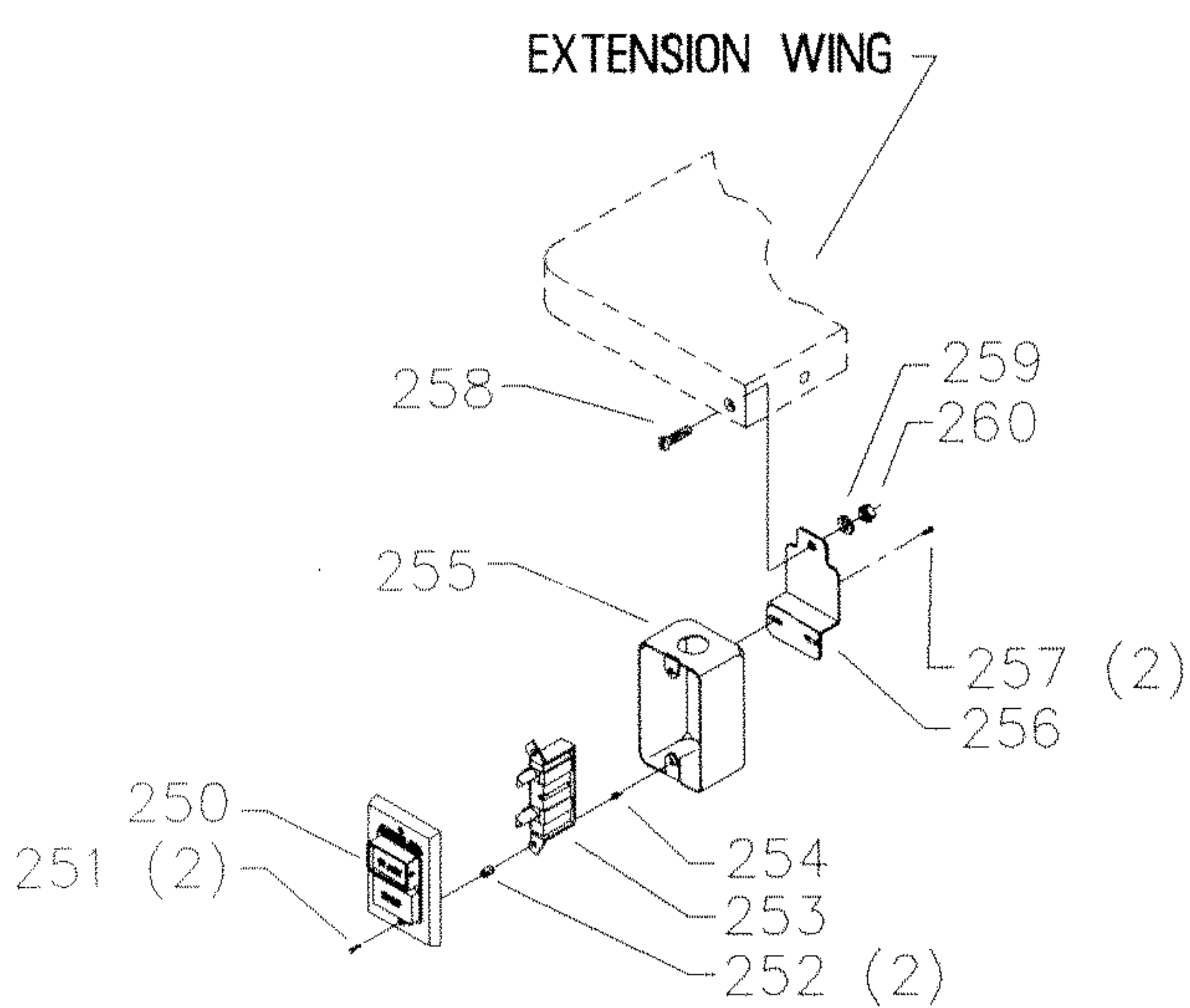
REF NO	PART NUMBER	DESCRIPTION	REF NO	PART NUMBER	DESCRIPTION
*	422-04-314-5003	ARBOR BRACKET, CONST OF:	156	434-01-404-0001	COLLAR, INCL:
101	902-01-200-9848	ARBOR NUT - LH	157	901-04-190-0201	5/16-18 X 5/16" HEX SOC SET SCREW
102	422-04-103-5001	FLANGE	158	927-03-010-2650	1 3/8" KEY
103	422-04-303-0003	ARBOR & FLANGE	159	901-01-060-5769	5/16-24 X 1" HEX HD SCREW
104	927-03-020-2660	1 1/2" KEY	160	902-01-020-1228	5/16-24 JAM NUT
105	1086894	BALL BEARING	161	905-01-010-2734	SPRING PIN
106	928-06-020-7382	LOAD SPRING	162	904-02-020-1704	3/8" LOCK WASHER
107	422-04-104-0002	SPACER	163	901-03-010-0775	3/8-16 X 1" HEX SOC HD SCREW
108	926-03-991-2328	ARBOR PULLEY	164	422-04-395-5001	FRONT TRUNNION, INCL:
109	0908653	5/16-18 X 3/8" HEX SOC HD SCREW	165	920-75-011-3935	BUSHING
110	902-07-020-7176	BEARING CLOSURE NUT	166	422-04-400-0005	HANDWHEEL (<i>Current Models Only</i>), INCL:
111	904-05-010-6664	LOCK WASHER	167	901-04-190-0201	5/16-18 X 5/16" HEX SOC SET SCREW
112	902-01-200-9847	SPECIAL NUT	166A	930-03-991-0468	HANDWHEEL (<i>Early Models Only</i>), INCL:
113	422-04-314-5002	ARBOR BRACKET, INCL:	167A	901-04-190-0201	5/16-18 X 5/16" HEX SOC SET SCREW
114	904-02-020-1704	3/8" LOCK WASHER	168	904-07-010-5569	3/4" FIBER WASHER
115	901-01-060-3102	3/8-16 X 1 3/4" HEX HD SCREW	169	901-03-010-0750	5/16-18 X 1" HEX SOC HD SCREW
116	904-15-101-7147	INT RET RING	170	422-04-031-0015	COVER PLATE
117	927-03-010-2653	1 15/16" KEY	171	422-04-014-5001	FRONT BRACKET
118	422-04-314-5004	MOTOR BRACKET W/SHAFT, INCL:	172	901-01-060-0682	3/8-24 X 1 1/2" HEX HD SCREW
119	928-06-011-4128	1 1/4" WAVE WASHER	173	904-02-020-1704	3/8" LOCK WASHER
120	905-01-010-5072	1/4" X 2" SPRING PIN	174	902-01-010-1207	3/8-24 HEX NUT
121	927-03-010-2657	2.937 KEY	175	927-03-010-2650	1 3/8" KEY
125	49-124	V-BELTS (MATCHED SET OF THREE)	176	422-04-406-5001	TILT SHAFT W/WORM, INCL:
126	41-644	MOTOR PULLEY, INCL:	177	904-10-031-4509	COLLAR
127	0908653	5/16-18 X 3/8" HEX SOC HD SCREW	178	904-01-021-3577	3/4" FIBER WASHER
130	904-10-031-2097	WASHER	179	905-01-010-2706	3/16" X 1" SPRING PIN
131	901-01-060-0664	7/16-20 X 1" HEX HD SCREW	180	422-04-074-0001	PLUG
132	422-04-071-5001	STEEL PIN	181	422-04-412-0009	LOCK KNOB (<i>Current Models Only</i>)
133	422-04-079-5001	SPRING CLIP	181A	422-04-412-0007	LOCK KNOB (<i>Early Models Only</i>)
134	422-04-036-5001	DEFLECTOR	182	422-04-055-0006	GUIDE BLOCK
135	422-04-104-5005	SLEEVE	183	904-10-031-2097	WASHER
136	901-01-060-0613	5/16-18 X 1 3/4" HEX HD SCREW	184	901-01-060-0681	7/16-20 X 1 1/2" HEX HD SCREW
137	422-04-102-5002	YOKE	185	422-04-014-2008	POINTER BRACKET
138	422-04-014-0042	REAR BRACKET	186	0919714	#08-32 X 2" FILL HD SCREW
139	901-03-010-0775	3/8-16 X 1" HEX SOC HD SCREW	187	904-07-010-5569	3/4" FIBER WASHER
140	904-02-020-1704	3/8" LOCK WASHER	188	422-04-400-0005	HANDWHEEL (<i>Current Models Only</i>), INCL:
141	901-01-060-0682	3/8-24 X 1 1/2" HEX HD SCREW	189	901-04-190-0201	5/16-18 X 5/16" HEX SOC SET SCREW
142	904-02-020-1704	3/8" LOCK WASHER	188A	930-03-991-0468	HANDWHEEL (<i>Early Models Only</i>), INCL:
143	902-01-010-1207	3/8-24 HEX NUT	189A	901-04-190-0201	5/16-18 X 5/16" HEX SOC SET SCREW
144	905-01-010-2734	5/16" X 1" SPRING PIN	190	422-04-075-0002	POINTER
145	422-04-395-5002	REAR TRUNNION, INCL:	191	901-06-110-3036	1/4-20 X 3/8" ROUND HD SCREW
146	920-75-011-3934	BEARING	**	438-01-004-0054	CABLE TIE (<i>See Service Note A</i>)
*	422-04-406-5002	RAISING SHAFT ASSY, CONST OF:	195	422-39-101-0001	WRENCH - 7/8 X 1/2"
150	422-04-074-0001	PLUG	196	955-01-050-1472	WRENCH
151	422-04-412-0009	LOCK KNOB (<i>Current Models Only</i>)	*		NOT SHOWN ASSEMBLED
151A	422-04-412-0007	LOCK KNOB (<i>Early Models Only</i>)	**		NOT SHOWN
152	904-01-021-3577	3/4" FIBER WASHER			
153	905-01-010-2706	3/16" X 1" SPRING PIN			
154	422-04-406-0001	SHAFT W/WORM, INCL:			
155	902-01-210-1036	3/4-16 LOCK NUT			

SERVICE NOTES:

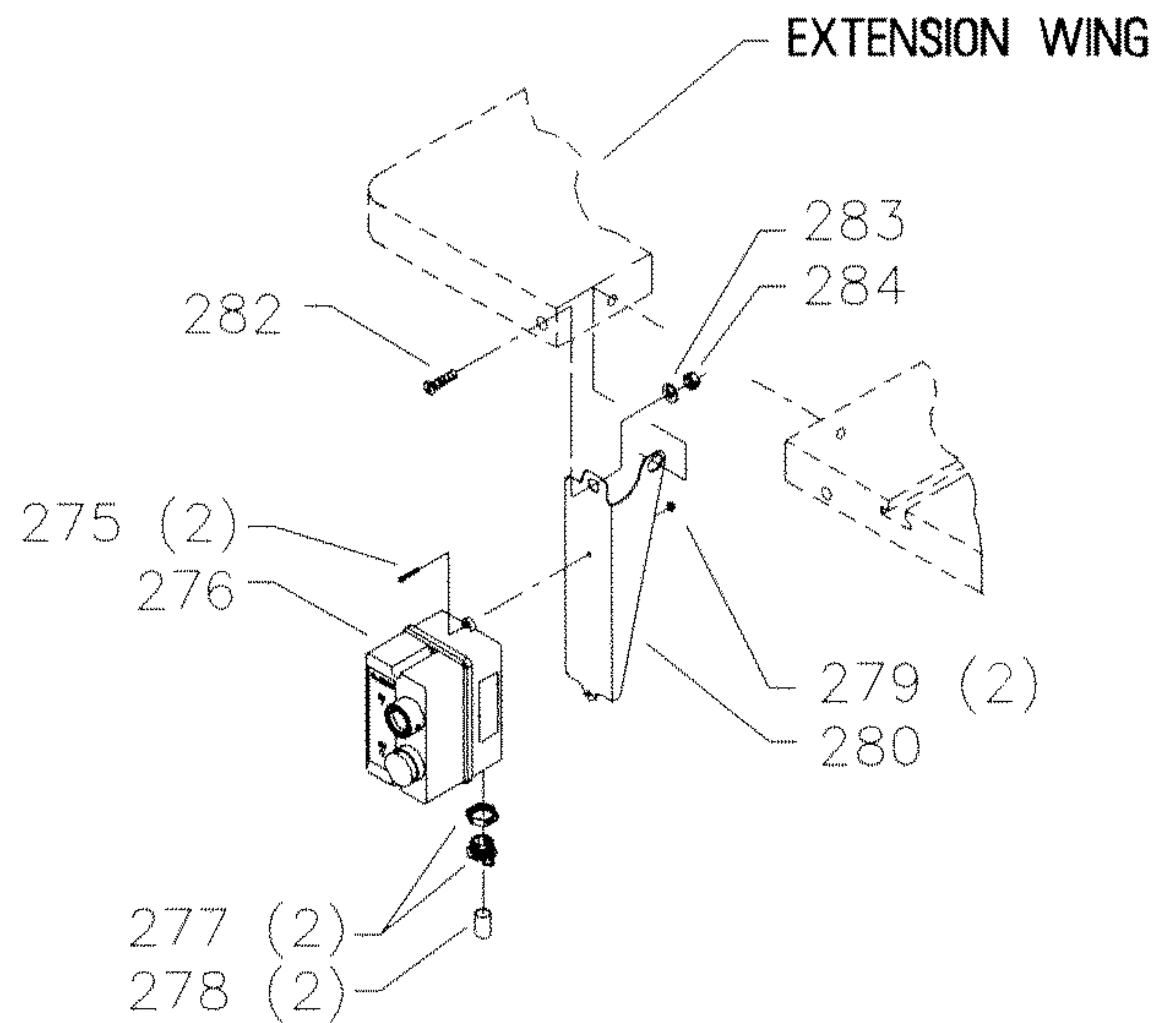
A - Used to secure motor and switch cords. See owners manual for details.



**34-639
BLADE GUARD**



FOR USE WITH LVC MODELS ONLY

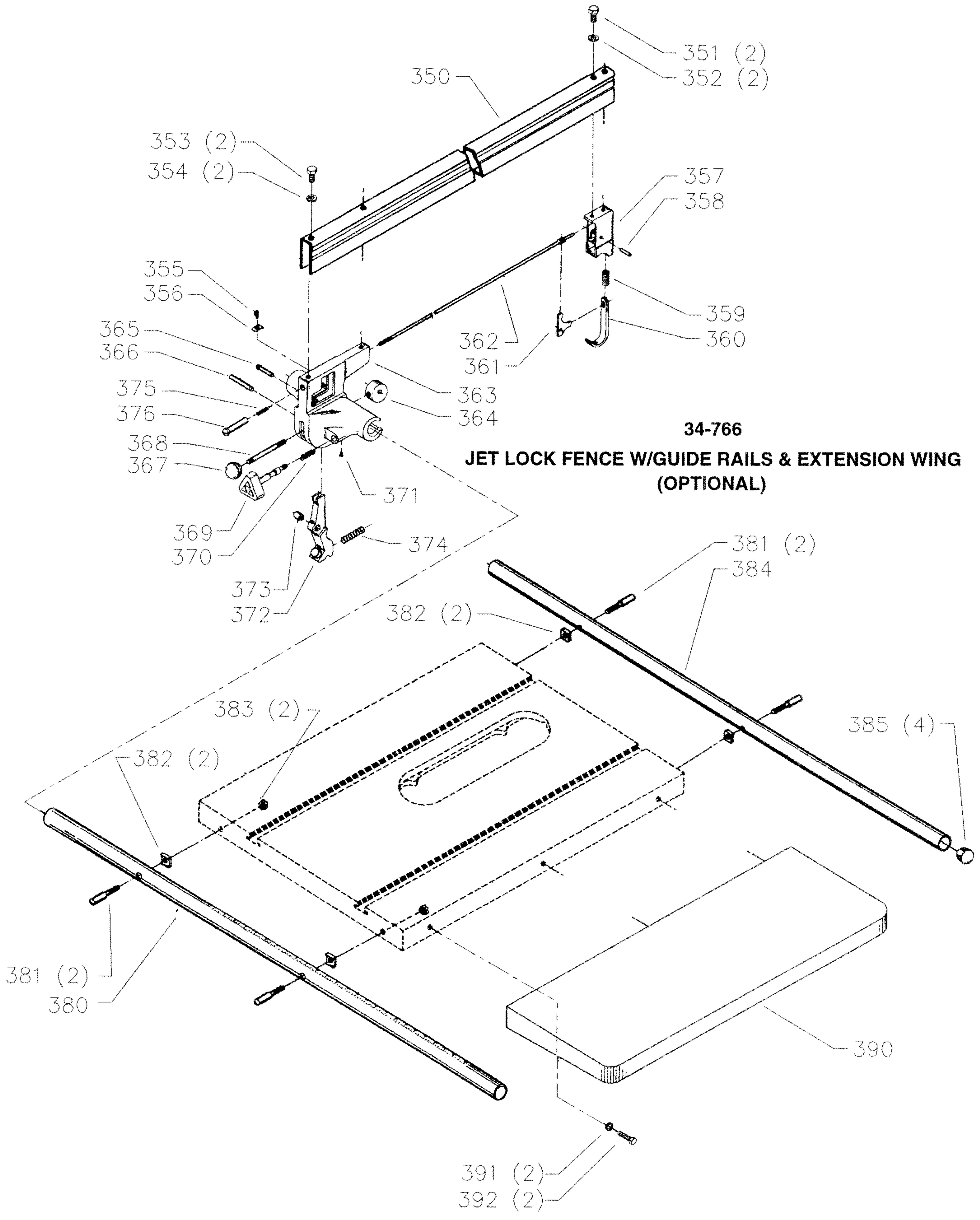


**FOR SPECIAL EDITION
(GPE) MODELS ONLY**

REPLACEMENT PARTS

REF NO	PART NUMBER	DESCRIPTION
*	34-639	BLADE GUARD COMPLETE, CONST OF:
*	1086935	BLADE GUARD, CONST OF:
201	1086388	PUSH NUT CAP
202	1087811	PIN
203	1086334	SEE THRU GUARD
204	422-16-047-0001	KICK BACK FINGER
205	1086353	SPRING
206	422-04-071-0007	PIN
207	1086337	PIVOT BRACKET
208	1086387	PUSH NUT
209	905-01-010-6729	5/32" X 11/16" SPRING PIN
210	422-04-086-0002	SPLITTER W/BUSHING
211	901-01-060-0649	5/16-18 X 1" HEX HD SCREW
212	904-01-010-1620	FLAT WASHER
213	904-02-010-1703	5/16" LOCK WASHER
214	422-04-014-0018	BRACKET
215	422-04-014-0019	BRACKET
216	422-04-089-0003	SUPPORT ROD
217	902-01-020-1226	5/8-18 JAM NUT
218	904-03-020-1751	5/8" INT TOOTH WASHER
219	901-01-060-0649	5/16-18 X 1" HEX HD SCREW
220	422-03-072-0001	PLATE
221	422-04-014-0037	SPLITTER BRACKET
222	904-01-031-2934	1/4" FLAT WASHER
223	901-03-010-0230	1/4-20 X 2" HEX SOC HD SCREW
224	901-03-010-0755	1/4-20 X 3/4" HEX SOC HD SCREW
250	1340100	SWITCH COVER ASSY
251	901-02-010-0567	#06-32 X 1/4" ROUND HD SCREW
252	402-07-104-5007	SPACER
253	438-01-017-0101	MAGNETIC SWITCH
254	402-07-111-5002	STUD
255	438-01-001-0036	SWITCH BOX
256	422-40-014-0006	MOUNTING BRACKET - LVC
257	901-05-163-1126	#08-32 X 5/16" PAN HD SCREW
258	901-03-033-1046	5/16-18 X 1" FLAT HD SCREW
259	904-01-010-1620	FLAT WASHER
260	902-01-010-1300	5/16-18 HEX NUT
275	901-02-453-1123	#10-32 X 1/2" PAN HD SCREW
276	438-01-016-0194	STARTER, GPE, 1PH, 230V, INCL:
277	438-01-004-0007	CORD CLAMP
278	438-01-011-0054	INSULATOR SLEEVE
279	902-01-293-1513	#10-32 KEPS NUT
280	422-40-014-0007	MOUNTING BRACKET - GPE
282	901-03-033-1046	5/16-18 X 1" FLAT HD SCREW
283	904-01-010-1620	FLAT WASHER
284	902-01-010-1300	5/16-18 HEX NUT

* NOT SHOWN ASSEMBLED



34-766
JET LOCK FENCE W/GUIDE RAILS & EXTENSION WING
(OPTIONAL)

REPLACEMENT PARTS

REF NO	PART NUMBER	DESCRIPTION
*	34-766	JET LOCK FENCE W/GUIDE RAILS & EXT WING (See Service Note C), CONST OF:
*	34-896	JET LOCK FENCE, CONST OF:
350	422-19-043-0001	FENCE BODY
351	901-01-060-0605	5/16-18 X 1/2" HEX HD SCREW
352	904-01-010-1620	FLAT WASHER
353	901-01-060-0677	3/8-24 X 1/2" HEX HD SCREW
354	904-01-033-1451	FLAT WASHER
355	901-02-010-0551	#10-32 X 1/4" ROUND HD SCREW
356	951-01-020-7849	POINTER
357	422-04-010-5002	REAR SLIDE BLOCK
358	905-04-071-4459	1/4" X .797" DOWEL PIN
359	928-01-041-4118	COIL SPRING
360	422-04-027-0001	HOOK
361	422-04-067-5001	LEVER
362	422-04-108-5001	ROD
*	422-04-312-5008	FRONT CLAMP, CONST OF:
363	422-04-012-5005	FRONT CLAMP BODY
364	422-04-042-5005	ECCENTRIC
365	422-04-071-5005	PIN
366	422-04-071-5004	PIN
367	931-01-011-4091	BALL HANDLE
368	422-04-111-5002	LEVER
369	422-04-351-5002	KNOB & PINION
370	928-01-201-5898	SPRING
371	901-04-160-6218	1/4-20 X 1/4" HEX SOC SET SCREW
372	422-04-327-5002	FRONT CLAMP SHOE, INCL:
373	904-08-021-4550	RUBBER BUSHING
374	928-01-041-4123	SPRING
375	928-01-021-5301	SPRING
376	422-04-105-5001	SLEEVE
*	34-812	RAILS W/HARDWARE, CONST OF:
380	422-04-055-0001	FRONT GUIDE RAIL
381	422-04-112-5007	SPECIAL SCREW
382	422-04-104-0001	SPACER
383	902-01-010-1207	3/8-24 HEX NUT
384	422-04-055-0002	REAR GUIDE RAIL
385	961-01-010-7462	END PLUG
390	43-349	EXTENSION WING, INCL:
391	904-01-010-1638	FLAT WASHER
392	901-01-060-9964	7/16-20 X 1 1/4" HEX HD SCREW
*	NOT SHOWN ASSEMBLED	

SERVICE NOTE:

C - The 10" TILTING ARBOR UNISAW is available with the JET LOCK FENCE, the UNIFENCE (Parts List CS-4K-9A), or the BIESEMEYER FENCE SYSTEM (Parts List CS-15).

STANDARD SAFETY EQUIPMENT

In order to promote tool safety, Delta International Machinery Corp. strictly enforces the policy of repairing or replacing any damaged or missing standard safety equipment on machines presented to Delta Authorized Service Center for service/repairs. Any product which is presented to a Delta Authorized Service Center for repairs which contains missing or damaged standard safety equipment will have that equipment repaired or replaced and the customer will be charged for any such service/repairs. Customers can avoid such charges only if the missing safety component is supplied to the service center at the time of repair.

This parts list is provided to aid in obtaining service parts. Copies of the instruction and maintenance literature can be obtained through the Delta Technical Publications Department or through your local service outlet.