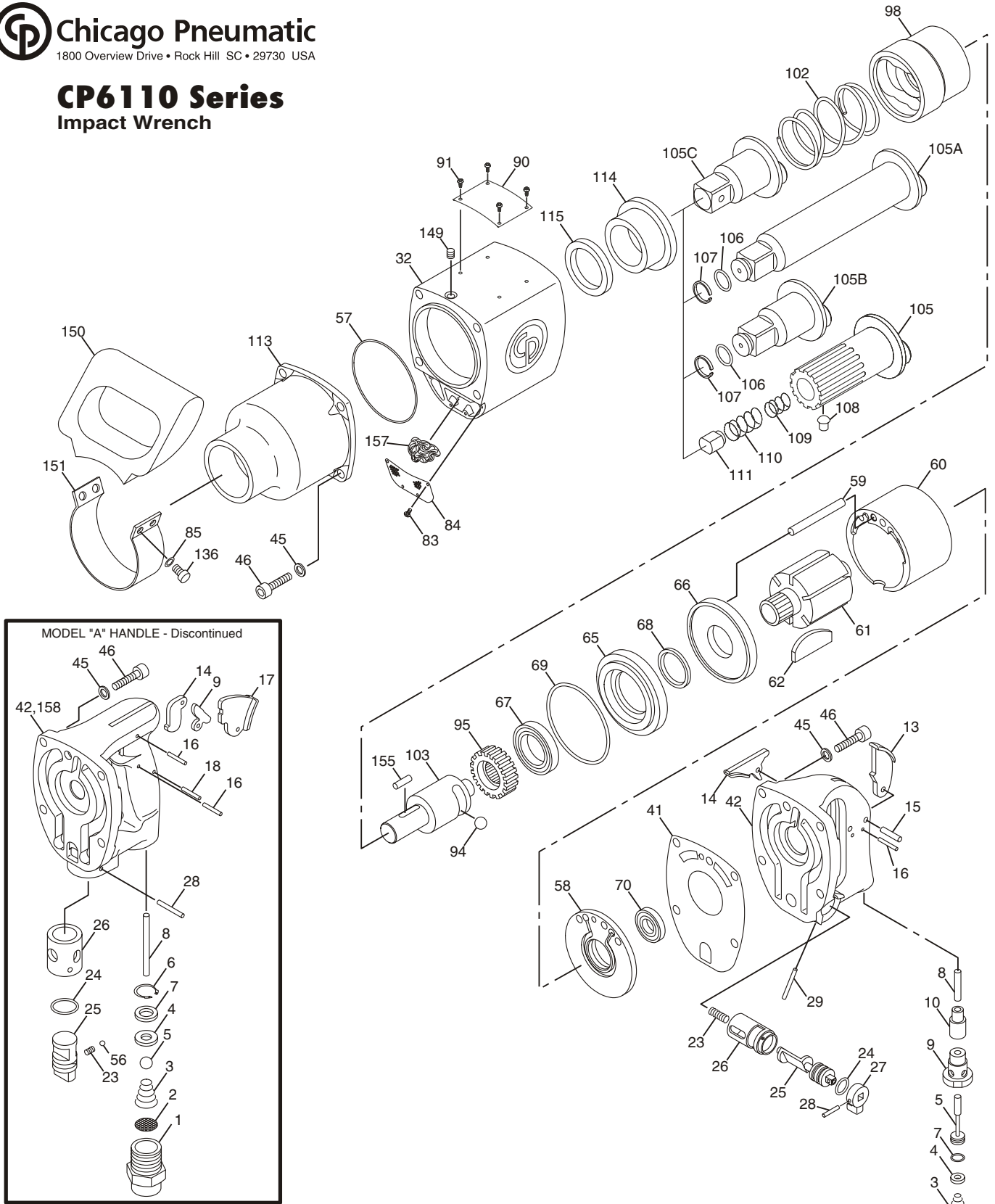




**Chicago Pneumatic**  
1800 Overview Drive • Rock Hill SC • 29730 USA

# CP6110 Series Impact Wrench



**THROTTLE HANDLE**

**MOTOR**

**CLUTCH HOUSING**

**CLUTCH**

**SHANK**

**P** Closed Grip Inside Trigger  
**G** Closed Grip Outside Trigger

**A** Standard Motor

**S** Steel Clutch Housing

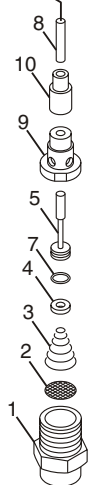
**E** Twin Lobe Clutch

**D** 1" Square Drive Hole for Socket Pin  
**L** # Spline Drive Integral Retainer

Finding information using your Catalog Code Letter  
Example:

**CP-6110- PASED**

THROTTLE HANDLE MOTOR HOUSING CLUTCH SHANK



## CP6110 PARTS LIST

| <b>Index No.</b> | <b>Part No.</b> | <b>Description</b>           | <b>No. Req'd.</b> |
|------------------|-----------------|------------------------------|-------------------|
| 1                | CA128148        | Bushing-Air Inlet            | 1                 |
| 2                | P002019         | Screen-Air                   | 1                 |
| 3                | CA128158        | Spring                       | 1                 |
| 4                | CA129707        | Retainer-O-Ring              | 1                 |
| 5                | CA128150        | Valve-Throttle               | 1                 |
| 7                | C102551         | O-Ring (012)                 | 1                 |
| 8                | C136011         | Pin-Push                     | 1                 |
| 9                | CA128164        | Bushing Throttle Valve       | 1                 |
| 10               | C136008         | Bushing (Incl: Index No. 42) | 1                 |
| 13               | C062112         | Trigger-Outside              | 1                 |
| 14               | C063747         | Trigger-Inside               | 1                 |
| 15               | CA132086        | Pin (.188 x .875)            | 1                 |
| 16               | C114089         | Pin-Roll (.125 x .875)       | 1                 |
| 23               | C051372         | Spring                       | 1                 |
| 24               | C055373         | O-Ring (015)                 | 1                 |
| 25               | C136010         | Valve-Reverse                | 1                 |
| 26               | C036009         | Bushing (Incl: Index No. 42) | 1                 |
| 27               | C068664         | Lever-Reverse Valve          | 1                 |
| 28               | G071613         | Pin (.125 x .75)             | 1                 |
| 29               | C137726         | Pin (.094 x 1.37)            | 1                 |
| 32               | C145947         | Housing-Motor                | 1                 |
| 41               | C145948         | Gasket-Handle                | 1                 |
| 42               | C148391         | Handle                       | 1                 |
| 45               | C127947         | Lockwasher (M8)              | 8                 |
| 46               | CA128505        | Screw (M8 x 30 MM)           | 8                 |
| 56               | C014143         | Ball (.218 in. dia.)         | 1                 |
| 57               | C137325         | O-Ring (-040)                | 1                 |
| 58               | C144673         | Plate-Upper End              | 1                 |
| 59               | CA128038        | Pin-Alignment                | 1                 |
| 60               | C144675         | Liner                        | 1                 |
| 61               | C144676         | Rotor                        | 1                 |
| 62               | C144677         | Blade-Rotor                  | 6                 |
| 65               | C144674         | Plate-Bearing                | 1                 |
| 66               | C144678         | Plate-Lower End              | 1                 |
| 67               | C064755         | Bearing-Ball                 | 1                 |
| 68               | C137324         | Oil-Seal                     | 1                 |
| 69               | C145949         | O-Ring (-237)                | 1                 |
| 70               | C068659         | Bearing-Ball                 | 1                 |
| 83               | KF129065        | Screw-Self Tapping           | 4                 |
| 84               | C068659         | Plate-Exhaust                | 1                 |

| <b>Index No.</b> | <b>Part No.</b> | <b>Description</b>  | <b>No. Req'd.</b> |
|------------------|-----------------|---|-------------------|
| 85               | C127505         | Lockwasher (M6)   | 4                 |
| 90               | C147458         | Plate-Name (Not Shown)  | 1                 |
| 91               | C086065         | Screw-Name Plate (Not Shown)  | 4                 |
| 94               | P004254         | Ball-Steel (.500 dia.)  | 1                 |
| 95               | C144681         | Coupling  | 1                 |
| 98               | C144682         | Dog   | 1                 |
| 102              | C144683         | Spring-Release  | 1                 |
| 103              | C144690         | Shaft-Timing  | 1                 |
| 105              | C144687         | Anvil #5 Spline (Incl: Index Nos. 108, 109, 110 & 111)              | 1                 |
| 105A             | C144686         | Anvil-1 in. Sq. Drive (6 in. Extended) (Incl: Index Nos. 106 & 107) | 1                 |
| 105B             | C144684         | Anvil-1 in. Sq. Drive (Ring-Retainer) (Incl: Index Nos. 106 & 107)  | 1                 |
| 105C             | C144685         | Anvil-1 in. Sq. Drive (Pin Retainer)                                | 1                 |
| 105D             | C155465         | Anvil-1 in. Sq. Drive (6 in. extended Pin Retainer) (Not Shown)     | 1                 |
| 105E             | C155231         | Anvil-6 in. Extended #5 Spline (Not Shown)                          | 1                 |
| 106              | H082651         | O-Ring (-115)(RSR)  | 1                 |
| 107              | CA094791        | Ring-Friction (RSR)   | 1                 |
| 108              | C047620         | Button-Lock   | 1                 |
| 109              | C112202         | Spring-Inner  | 1                 |
| 110              | C112185         | Spring-Outter   | 1                 |
| 111              | C112191         | Plunger   | 1                 |
| 113              | C144689         | Housing-Clutch  | 1                 |
| 114              | C144688         | Bushing-Clutch  | 1                 |
| 115              | C144708         | Seal-Oil  | 1                 |
| 136              | C127944         | Screw (Support Handle)  | 1                 |
| 149              | C102507         | Plug-Pipe (1/16 Flush)  | 1                 |
| 150              | C145892         | Handle-Support  | 1                 |
| 151              | C116388         | Band-Support Handle   | 1                 |
| 155              | CA050746        | Pin-Clutch  | 1                 |
| 157              | P089109         | Exhaust-Muffler   | 2                 |
| 158              | CA144007        | Label-Safety Warning (Not Shown)                                    | 1                 |
| 159              | C134724         | Label-Retainer Warning (Not Shown)                                  | 1                 |
| 160              | C134691         | Ring-Socket Retainer (1 - 15/16 in.) (Not Shown)                    | 1                 |

## MODEL "A" HANDLE PARTS LIST

| <b>Index No.</b> | <b>Part No.</b> | <b>Description</b>         | <b>No. Req'd.</b> |
|------------------|-----------------|----------------------------|-------------------|
| 1                | C144670         | Bushing-Air Inlet          | 1                 |
| 2                | P002019         | Screen-Air                 | 1                 |
| 3                | C144671         | Spring                     | 1                 |
| 4                | C139037         | Seat-Valve                 | 1                 |
| 5                | C138682         | Ball (.562 in. dia.)       | 1                 |
| 6                | C129842         | Ring-Retaining             | 1                 |
| 7                | C139038         | Spacer-Valve               | 1                 |
| 8                | C144672         | Pin-Push (Outside Trigger) | 1                 |
|                  | C146161         | Pin-Push (Inside Trigger)  | 1                 |
| 9                | C145940         | Link-Trigger               | 1                 |
| 14               | C145941         | Trigger-Inside             | 1                 |
| 16               | CA088617        | Pin-Roll (.156 x 1 in.)    | 2                 |

| <b>Index No.</b> | <b>Part No.</b> | <b>Description</b>               | <b>No. Req'd.</b> |
|------------------|-----------------|----------------------------------|-------------------|
| 17               | C148123         | Trigger-Outside                  | 1                 |
| 18               | C109531         | Pin (.156 x .86 in.)             | 1                 |
| 23               | C121535         | Spring-Detent                    | 1                 |
| 24               | P092536         | O-Ring (-020)                    | 1                 |
| 25               | C145945         | Valve-Reverse                    | 1                 |
| 26               | C145946         | Bushing-Reverse Valve            | 1                 |
| 28               | C148144         | Pin-Retaining                    | 1                 |
| 42               | C144693         | Handle                           | 1                 |
| 45               | C127947         | Lockwasher (M8)                  | 4                 |
| 46               | CA128505        | Screw (M8 x 30 MM)               | 4                 |
| 56               | C14143          | Ball (.218 in. dia.)             | 1                 |
| 158              | CA144007        | Label-Safety Warning (Not Shown) | 1                 |

## ACCESSORIES

| <b>CP Ret Ring Part No.</b> | <b>Identification Number Molded into Ring</b> | <b>Inside Diameter of Ret Ring (in.)</b> | <b>For Use on Square Drive (in.)</b> |
|-----------------------------|---|--|--------------------------------------|
| C-155470                    | 10008S  | 1-3/4"                                   | 1"                                   |
| C-155471                    | 10010S  | 2"                                       | 1"                                   |
| C-155472*                   | 10015S  | 2-1/8"                                   | 1"                                   |
| C-134692                    | 10016S  | 2-1/4"                                   | 1"                                   |
| C-155473                    | 10017S  | 2-1/2"                                   | 1"                                   |
| C-155474                    | 10019S  | 2-5/8"                                   | 1"                                   |

\*Supplied with Tool