

# CN665D

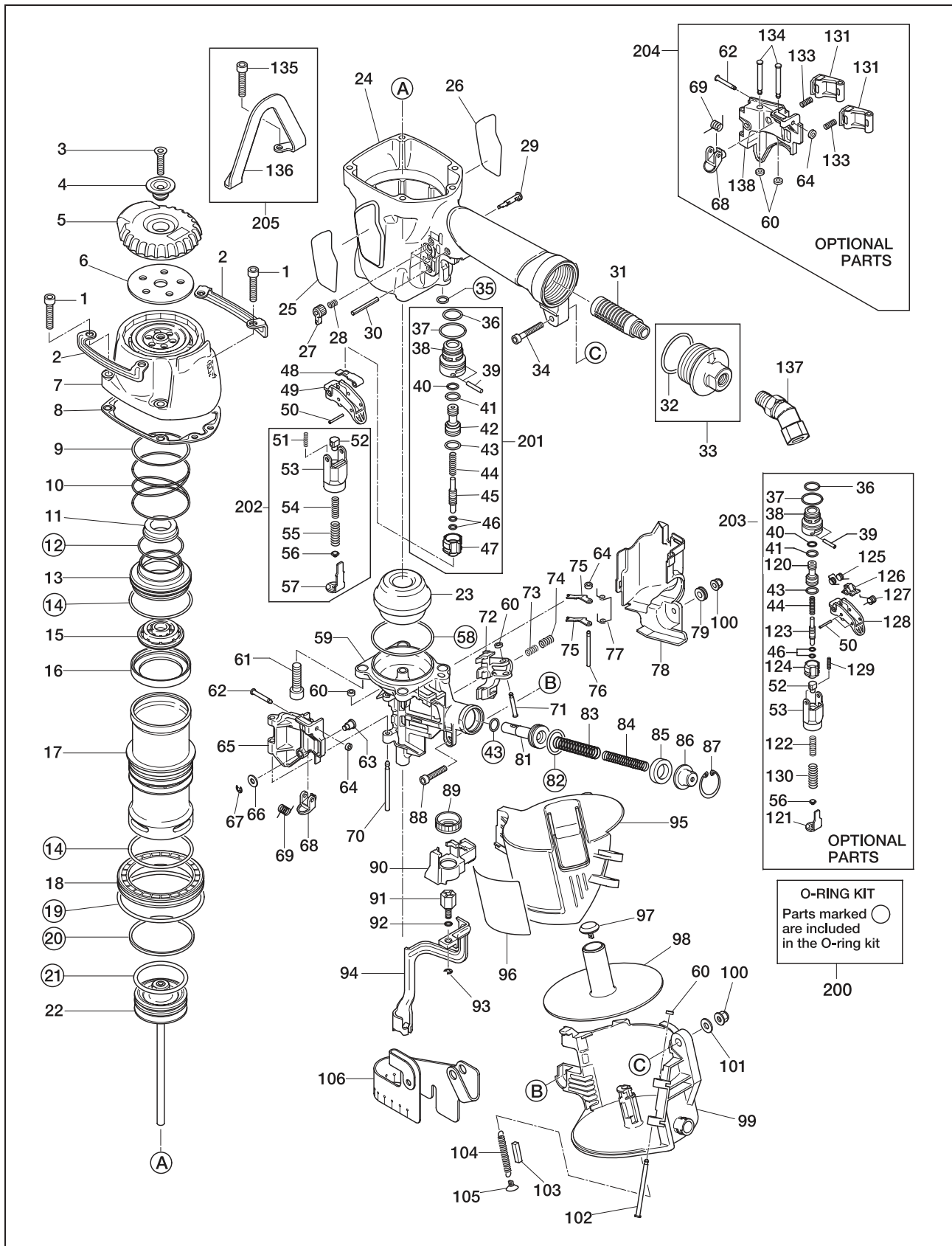
EXPLODED  
VIEW AND SPARE  
PARTS LIST

SCHEMA ECLATE ET  
LISTE DES PIECES  
DE RECHANGE

DESPIECE DE LA  
MAQUINA Y LISTA  
DE RECAMBIOS

EINZELTEILDAR-  
STELLUNG UND  
ERSATZTEILLISTE

ESPLOSO DEI  
COMPONENTI ED  
ELENCO DELLE  
PARTI DI RICAMBIO



| Tool Model | Part NO | Part Code | Description                  |
|------------|---------|-----------|------------------------------|
| CN665D     | 1       | BB40422   | BOLT 6X30 FOR CC00402        |
| CN665D     | 2       | CN36348   | PROTECTOR                    |
| CN665D     | 3       | AA82411   | SCREW M6X27                  |
| CN665D     | 4       | KN11393   | EXHAUST COVER HOLDER         |
| CN665D     | 5       | CN35294   | EXHAUST COVER                |
| CN665D     | 6       | KN11392   | FILTER B                     |
| CN665D     | 7       | CN70541   | CYLINDER CAP UNIT            |
| CN665D     | 8       | CN36308   | CYLINDER CAP SEAL            |
| CN665D     | 9       | CN36331   | WASHER, CYLINDER CAP         |
| CN665D     | 10      | KK23655   | COMP. SPRING 3655            |
| CN665D     | 11      | CN36107   | PLAIN WASHER B               |
| CN665D     | 12      | HH11141   | O-RING ARP568-130            |
| CN665D     | 13      | CN35290   | HEAD VALVE PISTON            |
| CN665D     | 14      | HH12101   | O-RING AG55                  |
| CN665D     | 15      | CN35289   | PISTON STOP                  |
| CN665D     | 16      | CN34994   | HEAD VALVE SEAL              |
| CN665D     | 17      | CN38471   | CYLINDER                     |
| CN665D     | 18      | CN36312   | CYLINDER RING                |
| CN665D     | 19      | HH14152   | O-RING AS568-231             |
| CN665D     | 20      | CN36330   | CHECK VALVE                  |
| CN665D     | 21      | HH11809   | O-RING P53                   |
| CN665D     | 22      | CN70154   | MAIN PISTON UNIT             |
| CN665D     | 23      | KN11219   | BUMPER                       |
| CN665D     | 24      | CN81357   | FRAME                        |
| CN665D     | 25      | CN38464   | NAME PLATE A                 |
| CN665D     | 26      | CN38465   | NAME PLATE B                 |
| CN665D     | 27      | KN12622   | TRIGGER LOCK LEVER           |
| CN665D     | 28      | KK23507   | SPRING 3507                  |
| CN665D     | 29      | KN12621   | TRIGGER LOCK DIAL            |
| CN665D     | 30      | FF21611   | ROLL PIN 3X32 AW             |
| CN665D     | 31      | TA17024   | FILTER A                     |
| CN665D     | 32      | HH12118   | O RING 1AG35                 |
| CN665D     | 33      | CN81224   | END CAP ASSY                 |
| CN665D     | 34      | BB40470   | SCREW 5X32                   |
| CN665D     | 35      | HH11105   | O-RING AP7 N5525             |
| CN665D     | 36      | HH11125   | O-RING AP12 CN65086          |
| CN665D     | 37      | HH11138   | O-RING AP20                  |
| CN665D     | 38      | CN31323   | TRIGGER VALVE HOUSING        |
| CN665D     | 39      | FF30161   | PIN 161                      |
| CN665D     | 40      | HH11119   | O-RING AP6 N10027            |
| CN665D     | 41      | HH11209   | O-RING 1BP7 N10028           |
| CN665D     | 42      | CN33010   | PILOT VALVE                  |
| CN665D     | 43      | HH11113   | O-RING AP9 N5528             |
| CN665D     | 44      | KK24123   | COMPRESSION SPRING 4123      |
| CN665D     | 45      | CN35779   | TRIGGER VALVE STEM           |
| CN665D     | 46      | HH11901   | O-RING 1.4 X 2.5 CN65020     |
| CN665D     | 47      | CN33009   | TRIGGER VALVE CAP            |
| CN665D     | 48      | CN35115   | CONTACT LEVER                |
| CN665D     | 49      | CN35714   | TRIGGER                      |
| CN665D     | 50      | FF22402   | SPRING PIN 3X16 (LIGHT LOAD) |
| CN665D     | 51      | KK23129   | COMPRESSION SPRING 3129      |

| <b>Tool Model</b> | <b>Part NO</b> | <b>Part Code</b> | <b>Description</b>                         |
|-------------------|----------------|------------------|--|
| CN665D            | 52             | CN35059          | CONTACT ARM GUIDE B                        |
| CN665D            | 53             | CN37842          | CONTACT ARM GUIDE A                        |
| CN665D            | 54             | KK23735          | COMPRESSION SPRING 3735                    |
| CN665D            | 55             | KK23736          | COMPRESSION SPRING 3736                    |
| CN665D            | 56             | CN35004          | CONTACT BUMPER                             |
| CN665D            | 57             | CN37845          | CONTACT ARM A                              |
| CN665D            | 58             | HH11162          | O-RING ARP568-140                          |
| CN665D            | 59             | CN36315          | NOSE                                       |
| CN665D            | 60             | EE39602          | WASHER 7                                   |
| CN665D            | 61             | BB40443          | SCREW M8 X 28                              |
| CN665D            | 62             | FF41599          | PIN 1599 (REPLACES FF41587)                |
| CN665D            | 63             | FF41837          | STEP PIN 1837                              |
| CN665D            | 64             | EE39609          | RUBBER WASHER 1.8X6X2                      |
| CN665D            | 65             | CN36336          | DOOR                                       |
| CN665D            | 66             | EE39814          | PLAIN WASHER D                             |
| CN665D            | 67             | JJ10405          | E-RING 4                                   |
| CN665D            | 68             | CN33679          | DOOR LUTCH                                 |
| CN665D            | 69             | KK33261          | TORSION SPRING 3261 (REPLACES KK33169)     |
| CN665D            | 70             | FF31257          | STRAIGHT PIN 1257                          |
| CN665D            | 71             | FF41817          | STEP PIN 1817                              |
| CN665D            | 72             | CN36349          | FEED PAWL                                  |
| CN665D            | 73             | KK23710          | COMP. SPRING 3710                          |
| CN665D            | 74             | KK23788          | COMP. SPRING 3788                          |
| CN665D            | 75             | CN34486          | CHECK PAWL                                 |
| CN665D            | 76             | FF31264          | STRAIGHT PIN 1264                          |
| CN665D            | 77             | KK33259          | TORSION SPRING 3259                        |
| CN665D            | 78             | CN36323          | COVER                                      |
| CN665D            | 79             | CN32170          | COLLAR                                     |
| CN665D            | 81             | CN36317          | FEED PISTON                                |
| CN665D            | 82             | HH11107          | O-RING AP18                                |
| CN665D            | 83             | KK23335          | COM. SPRING 3335                           |
| CN665D            | 84             | KK23627          | COMP. SPRING 3627                          |
| CN665D            | 85             | CN37998          | FEED PISTON STOP                           |
| CN665D            | 86             | CN35285          | SPRING COLLER                              |
| CN665D            | 87             | JJ22408          | C-RING 24                                  |
| CN665D            | 88             | BB40405          | BOLT 5X25                                  |
| CN665D            | 89             | CN37836          | ADJUST DIAL                                |
| CN665D            | 90             | CN36322          | SPACER                                     |
| CN665D            | 91             | CN35006          | CONTACT BOLT                               |
| CN665D            | 92             | HH11903          | O-RING 1A 1.2 X 4 T29051(REPLACES TA15277) |
| CN665D            | 93             | JJ10404          | E-RING 3.2                                 |
| CN665D            | 94             | CN70163          | CONTACT ARM B UNIT                         |
| CN665D            | 95             | CN35651          | MAGAZINE COVER                             |
| CN665D            | 96             | CN38467          | WARNING LABEL USA (MAGAZINE)               |
| CN665D            | 97             | CN37428          | POST CAP                                   |
| CN665D            | 98             | HN10389          | NAIL SUPPORT                               |
| CN665D            | 99             | CN35388          | MAGAZINE                                   |
| CN665D            | 100            | CC00401          | ELASTIC STOP NUT M5                        |
| CN665D            | 101            | EE31105          | PLAIN WASHER 1-6                           |
| CN665D            | 102            | FF41287          | PIN 1287                                   |
| CN665D            | 103            | CN30601          | SPACER CN65091                             |

| <b>Tool Model</b> | <b>Part NO</b> | <b>Part Code</b> | <b>Description</b>                 |
|-------------------|----------------|------------------|------------------------------------|
| CN665D            | 104            | KK13051          | SPRING 3051                        |
| CN665D            | 105            | CN30602          | SPRING HOOK                        |
| CN665D            | 106            | CN36339          | DUST COVER                         |
| CN665D            | 120            | CN33627          | PILOT VALVE                        |
| CN665D            | 121            | CN35140          | CONTACT ARM A                      |
| CN665D            | 122            | KK23735          | COMPRESSION SPRING 3735            |
| CN665D            | 123            | CN33723          | TRIGGER VALVE STEM                 |
| CN665D            | 124            | CN31346          | TRIGGER VALVE CAP                  |
| CN665D            | 125            | KK33247          | SPRING 3247                        |
| CN665D            | 126            | TA16138          | S.T. LEVER                         |
| CN665D            | 127            | KK33144          | TORSION SPRING 3144                |
| CN665D            | 128            | CN35714          | TRIGGER                            |
| CN665D            | 129            | KK23282          | COM. SPRING 3282                   |
| CN665D            | 131            | CN36319          | RATCHET B                          |
| CN665D            | 133            | KK23332          | COM.SPRING 3332                    |
| CN665D            | 134            | FF41839          | PIN 1839                           |
| CN665D            | 135            | BB40438          | BOLT 6X32                          |
| CN665D            | 136            | CN36332          | HANGER                             |
| CN665D            | 137            | CN70572          | SWIVEL JOINT                       |
| CN665D            | 138            | CN36318          | DOOR                               |
| CN665D            | 200            | CN81072          | O-RING KIT CN665                   |
| CN665D            | 201            | CN81010          | TRIGGER VALVE KIT                  |
| CN665D            | 202            | CN81012          | ARM GUIDE KIT CN565D               |
| CN665D            | 203            | CN80535          | SEQUENTIAL TRIP KIT                |
| CN665D            | 204            | CN81071          | DOR KIT FOR PLASTIC SHEET COLLATED |
| CN665D            | 205            | CN81068          | HANGER KIT                         |