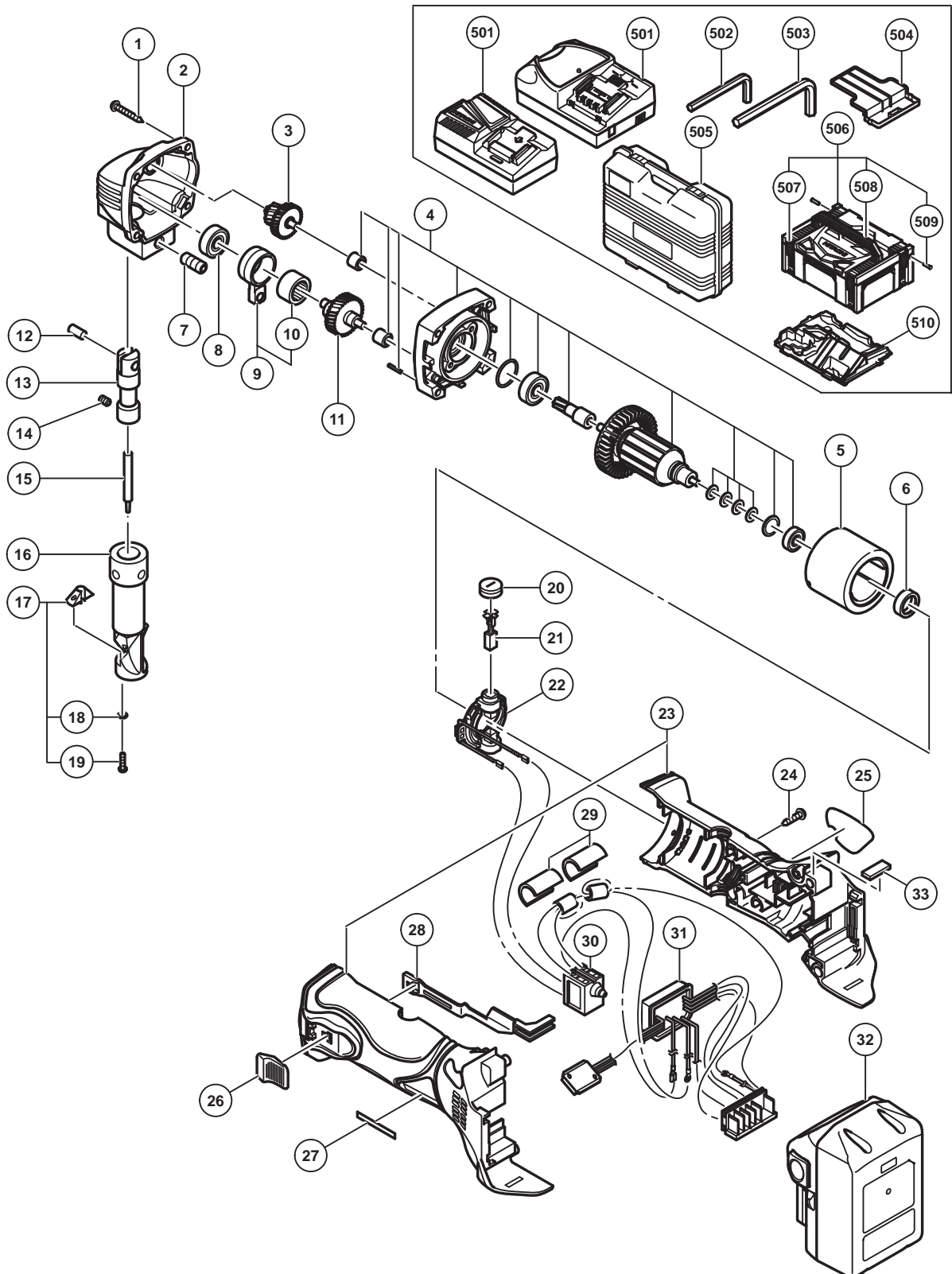


## ELECTRIC TOOL PARTS LIST

### CORDLESS NIBBLER Model CN 18DSL

2016-4-15  
(E1)



**PARTS**

CN 18DSL

ITEM NO.	CODE NO.	DESCRIPTION	NO. USED	REMARKS	
1	303694	TAPPING SCREW (W/FLANGE) D4 X 35 (BLACK)	4		
2	339996	GEAR COVER	1		
3	339997	SECOND PINION AND GEAR SET	1		
4	339995	ARMATURE AND PINION SET	1		
5	328195	MAGNET	1		
6	338867	BUSHING	1		
7	998008	HEX. SOCKET SET SCREW M8 X 20	1		
8	333945	BALL BEARING 608VV	1		
9	998004	CONNECTING ROD ASS'Y	1	INCLUD.10	
10	993163	NEEDLE BEARING (M152112)	1		
11	998035	SPINDLE AND GEAR SET	1		
12	993546	PIN D6	1		
13	998034	PISTON	1		
14	998037	HEX. SOCKET SET SCREW M5 X 6	1		
15	998030	PUNCH	1		
16	998038	DIE HOLDER	1		
17	998039	DIE ASS'Y	1	INCLUD.18,19	
18	949451	SPRING WASHER M3 (10 PCS.)	2		
19	949206	MACHINE SCREW M3 X 14 (10 PCS.)	2		
20	328200	BRUSH CAP	2		
21	999054	CARBON BRUSH 5 X 6 X 11.5 (1 PAIR)	2		
*	22	328202	BRUSH BLOCK	1	
*	22	334696	BRUSH BLOCK	1	FOR EUROPE,GBR
23	370161	HOUSING (A).(B) SET	1		
24	301653	TAPPING SCREW (W/FLANGE) D4 X 20 (BLACK)	5		
25		NAME PLATE	1		
26	314428	SLIDE KNOB	1		
27		HITACHI LABEL	1		
28	328199	SLIDE BAR	1		
*	29	339343	SUPPORT (D)	2	FOR EUROPE,GBR
30	329057	PUSHING BUTTON SWITCH	1		
*	31	370523	CONTROLLER TERMINAL SET	1	
*	31	370524	CONTROLLER TERMINAL SET	1	FOR EUROPE,GBR
*	32	336385	BATTERY BSL 1850 (EUROPE,AUS,NZL)(2 PCS.)	2	INCLUD.504
*	32	336265	BATTERY BSL 1850 (CHN)	2	INCLUD.504
*	32	330068	BATTERY BSL 1830 (EUROPE,AUS,NZL)	2	INCLUD.504
33	328709	PACKING	1		

