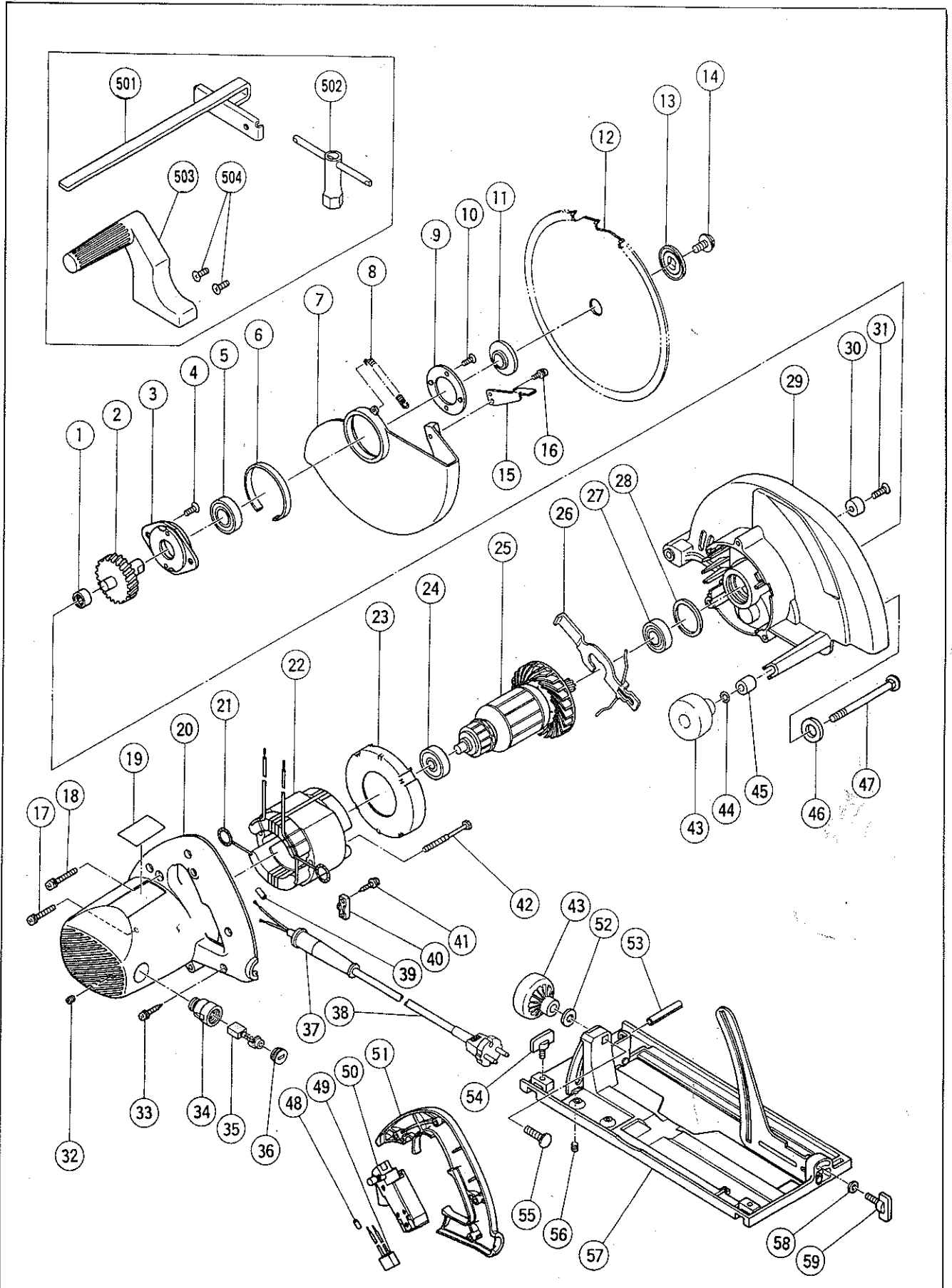


Assembly Diagram for C 9



PARTS

C 9

ITEM NO.	CODE NO.	DESCRIPTION	NO. USED	REMARKS	
1	673-002	NEEDLE BEARING (HK1212)	1		
2	303-789	SPINDLE GEAR	1		
3	303-790	BEARING HOLDER	1		
4	303-797	SEAL LOCK FLAT HD. SCREW M6X14	2		
5	620-3VV	BALL BEARING 6203VVCMP2S	1		
6	998-887	LINER	1		
7	303-905	SAFETY COVER	1		
8	303-906	RETURN SPRING	1		
9	303-804	BEARING COVER	1		
10	992-013	SEAL LOCK FLAT HD. SCREW M5X14	2		
*	11	303-365	WASHER (A)	1	FOR D25 HOLE
*	11	302-443	WASHER (A)	1	FOR D16 HOLE FOR NZL,AUS
*	12	304-066	SAW BLADE (COMBINATION) 235MM -- D25 HOLE	1	
*	12	303-892	TCT SAW BLADE 235MM - D25 HOLE - NT20	1	
*	12	303-809A	TCT SAW BLADE 235MM - D16.0 HOLE - NT20	1	FOR USA,CAN
	13	302-423	WASHER (B)	1	
	14	302-427	FLANGE BOLT M8X15.5	1	
	15	302-464	KNOB	1	
	16	986-662	MACHINE SCREW (W/WASHERS) M4X10	1	
	17	997-234	MACHINE SCREW (W/WASHERS) M5X35	1	
	18	303-796	MACHINE SCREW (W/WASHERS) M5X40	2	
	19		NAME PLATE	1	
*	20	303-807	HOUSING ASS'Y	1	INCLUD.32,34
*	20	303-808	HOUSING ASS'Y	1	INCLUD.32,34 FOR USA,CAN
	21	937-623	BRUSH TERMINAL	2	
*	22	340-226C	STATOR ASS'Y 110V -- 115V	1	INCLUD.21
*	22	340-226D	STATOR ASS'Y 120V -- 127V	1	INCLUD.21
*	22	340-226H	STATOR ASS'Y 220V -- 230V	1	INCLUD.21
*	22	340-226F	STATOR ASS'Y 240V	1	INCLUD.21
	23	303-794	FAN GUIDE	1	
	24	630-0VV	BALL BEARING 6300VVCMAV2S	1	
*	25	360-213C	ARMATURE ASS'Y 110V -- 115V	1	
*	25	360-213D	ARMATURE 120V -- 127V	1	
*	25	360-213E	ARMATURE 220V -- 230V	1	
*	25	360-213F	ARMATURE 240V	1	
	26	303-793	LOCK LEVER	1	
	27	620-2VV	BALL BEARING 6202VVCMP2S	1	
	28	303-792	RUBBER RING	1	
	29	303-850	GEAR COVER ASS'Y	1	INCLUD.1,28,30,31
	30	961-729	CUSHION	1	
	31	949-794	FLAT HD. SCREW M6X20 (10 PCS.)	1	
	32	938-477	HEX. SOCKET SET SCREW M5X8	2	
	33	301-653	TAPPING SCREW (W/FLANGE) D4X20	4	
	34	983-362	BRUSH HOLDER	2	
	35	999-038	CARBON BRUSH (1 PAIR)	2	
	36	961-781	BRUSH CAP	2	
*	37	958-049Z	CORD ARMOR D8.2	1	
*	37	940-778	CORD ARMOR D10.7	1	
*	38	500-214Z	CORD	1	(CORD ARMOR D10.7)
*	38	500-234Z	CORD	1	(CORD ARMOR D8.2) FOR INA,SUR,HKG
*	38	500-423Z	CORD	1	(CORD ARMOR D8.2) FOR SIN,KUW

