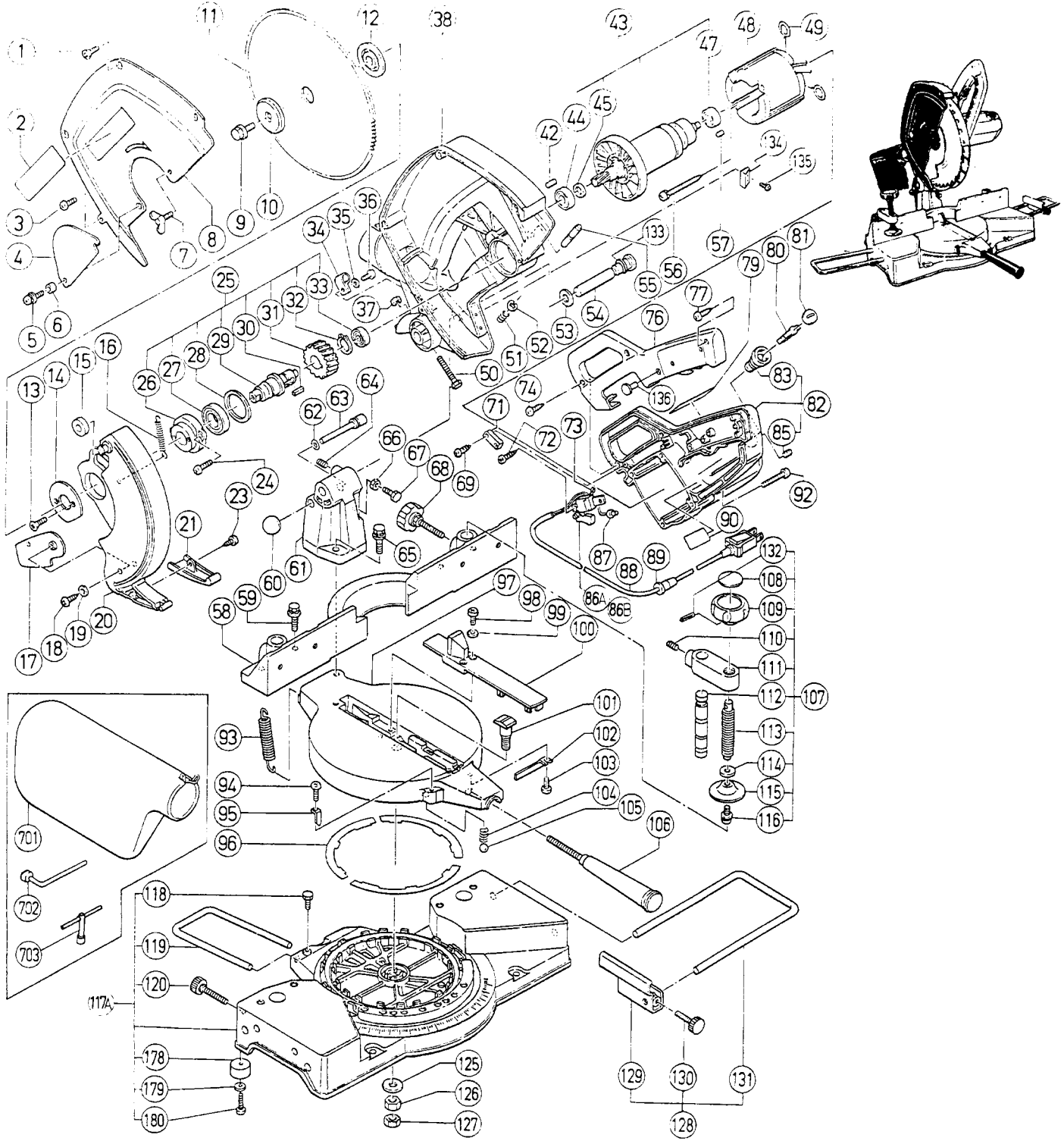




# HITACHI

## 12" MITER SAW

### Model C 12FA



**IMPORTANT**-To assure product **SAFETY** and **RELIABILITY**, repairs maintenance or adjustments should be performed by **HITACHI** Service Centers or other qualified service organizations. Always use **HITACHI** replacement parts.



# 12" MITER SAW

# Model C 12FA

ITEM NO.	PART NO.	NO. USED	DESCRIPTION	SUPPLY Q'TY	ITEM NO.	PART NO.	NO. USED	DESCRIPTION	SUPPLY Q'TY
1	996249	3	Flat Hd. Screw M5×10		72	301771	1	Tapping Screw D4×12	
2	998842	1	Hitachi Label		73	988894	1	Tube (D)	
3	949236	1	Machine Screw M5×10	10	74	301865	2	Tapping Screw D4×18	
4	301788	1	Sub Cover (A)		76	301786	1	Handle Cover	
5	996274	1	Machine Screw M5×8		77	988889	2	Tapping Screw D4×25	
6	998980	1	Spacer		79	—	1	Name Plate	
7	949396	1	Wing Bolt M5×8	10	80	999044	2	Carbon Brush	2
8	301785	1	Saw Cover		81	978445	2	Brush Cap	
9	976811	1	Bolt (Left Hand) M8		82	301965	1	Housing Ass'y (Includes Item 83, 85)	
10	301778	1	Washer (B)		83	974567	2	Brush Holder	
11	301722	1	Combination Saw Blade		85	966426	2	Hex. Socket Set Screw M5×6	
12	301777	1	Washer (A)		86 A	302406	1	Switch And Handle Cover	
13	949322	2	Flat Hd. Screw M4×10	10	86 B	988925	1	Switch (B)	
14	301764	1	Cover		87	959141	1	Connector	10
15	301842	1	Rubber Cushion		88	5002422	1	Cord	
16	301763	1	Return Spring		89	940778	1	Cord Armor	
17	301784	2	Sub Cover		90	—	1	Caution Plate	
18	974572	2	Tapping Screw D4×10		92	997234	4	Machine Screw M5×35	
19	976448	2	Washer (B)		93	301761	2	Spring	
20	301762	1	Safety Cover		94	949216	1	Machine Screw M4×10	10
21	301765	1	Plate (A)		95	977587	1	Indicator	
23	301771	1	Tapping Screw D4×12		96	998811	3	Liner	
24	949239	2	Machine Screw M5×16	10	97	301967	1	Turn Table	
25	301766	1	Spindle Ass'y (Includes Item 26~33)		98	949239	2	Machine Screw M5×16	
26	301769	1	Bearing Holder		99	949431	2	Bolt Washer M5	10
27	6005DD	1	Ball Bearing 6005DDUCMPS2S		100	301754	1	Table Insert	10
28	301770	1	Bearing Collar		101	301752	1	Shaft (A)	
29	301767	1	Spindle		102	998814	1	Spacer	
30	945072	1	Feather Key		103	949216	1	Machine Screw M4×10	
31	301768	1	Gear		104	967150	1	Spring (C)	10
32	939547	1	Retaining Ring D20	10	105	959153	1	Steel Ball D12.7	
33	627VVM	1	Ball Bearing 627VVMC2EPS2S		106	301753	1	Side Handle	
34	966530	1	Nylon Clip		107	301962	1	Vise Ass'y (Includes Item 108~116, 132)	
35	949431	1	Bolt Washer M5	10	108	998832	1	Label (A)	
36	949237	1	Machine Screw M5×12	10	109	996263	1	Knob	
37	949568	1	Lock Nut M8	10	110	996281	1	Hex. Socket Set Screw M8×16	
38	301966	1	Gear Case		111	998831	1	Screw Holder	
42	976441	1	Bearing Lock		112	301782	1	Vise Shaft	
43	360150G	1	Armature Ass'y 115V (Includes Item 44, 45, 47)		113	301781	1	Screw	
44	6200VV	1	Ball Bearing 6200VVCMP2S		114	949434	1	Washer M10	10
45	947622	1	Distance Piece		115	996261	1	Vise Plate	
47	6002VV	1	Ball Bearing 6002VVCMP2S		116	997314	1	Machine Screw M6×10	
48	340183G	1	Stator Ass'y 115V (Includes Item 49)		117 A	998810	1	Base Ass'y (Includes Item 118~120, 178~180)	
49	998744	2	Brush Terminal		118	949613	1	Bolt M6×16	10
50	972304	1	Screw (M)		119	998844	1	Holder	
51	998852	1	Spring		120	998843	2	Knob Bolt M6×52	
52	974577	1	Retaining Ring D7		125	967115	1	Washer (T)	
53	301760	1	Wave Washer		126	949561	1	Nut M12	10
54	301759	1	Hinge shaft		127	949574	1	Lock Nut M12	10
55	974576	1	Stopper Pin		128	998866	1	Guide Ass'y (Includes Item 129~131)	
56	976816	2	Tapping Screw D5×75		129	998835	1	Stopper	
57	976441	1	Bearing Lock		130	998836	1	Knob Bolt M6×11	
58	301963	1	Fence		131	998834	2	Holder	
59	996215	4	Bolt M8×35		132	949548	1	Roll Pin D4×25	10
60	967896	1	Grip		133	873085	1	O-Ring (P-14)	
61	301964	1	Hinge		134	301846	1	Guide Plate	
62	872645	1	O-Ring (P-9)		135	949216	2	Screw M4×10	10
63	301757	1	Stopper Pin (A)		136	951895	1	Lock off Button	
64	964629	1	Hex. Socket Set Screw M8×20		178	964851	5	Base Rubber	
65	996215	2	Bolt M8×35		179	949431	5	Washer M5	10
66	949568	1	Lock Nut M8	10	180	949241	5	Screw M5×20	10
67	988231	1	Screw (J)		701	976478	1	Dust Bag	
68	301787	1	Knob M10		702	988102	1	Box Wrench 17MM	
69	995062	2	Tapping Screw D4×16		703	968658	1	Box Wrench 10MM	
71	994566	1	Cord Clip						