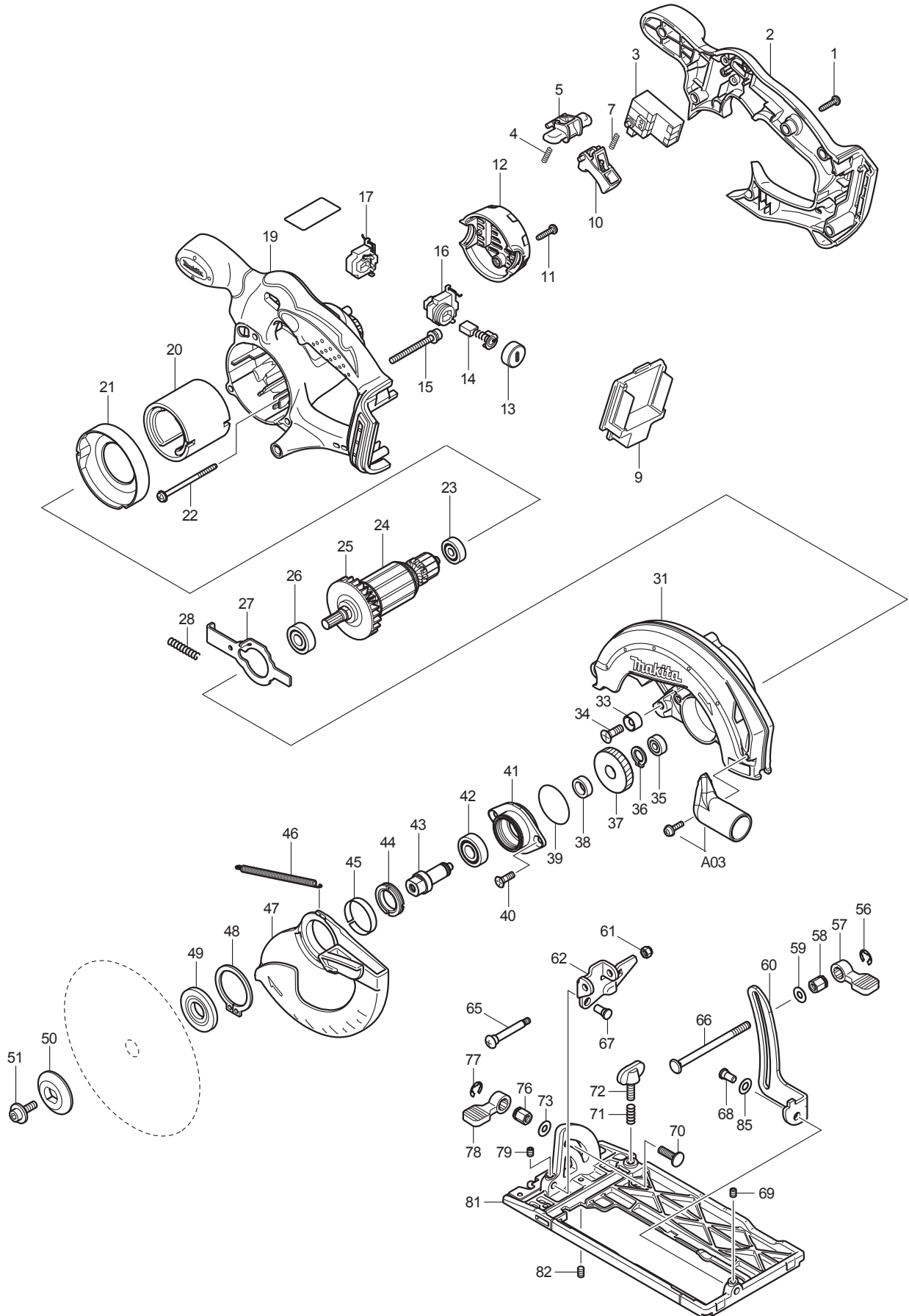




09 - 2011
BSS611 / BSS611X / BSS611Z / BSS611F
18V 6-1/2" CIRCULAR SAW



| Item No | Type | Ref | Part No | Description | Qty | Unit |
|---------|------|-----|----------|--|-----|------|
| 1 | | | 265995-6 | TAPPING SCREW 4X18 | 5 | PC. |
| 2 | 1 | | 450227-6 | * HANDLE COVER | 1 | PC. |
| | 2 | | 141472-1 | * HANDLE COVER | 1 | PC. |
| 3 | | | 651976-0 | SWITCH TG73BD | 1 | PC. |
| 4 | | | 231469-9 | COMPRESSION SPRING 4 | 1 | PC. |
| 5 | | | 419664-3 | LOCK OFF LEVER | 1 | PC. |
| 7 | | | 231469-9 | COMPRESSION SPRING 4 | 1 | PC. |
| 9 | 1 | | 643812-4 | * TERMINAL, BLACK | 1 | PC. |
| | 2 | | 643838-6 | * TERMINAL | 1 | PC. |
| | 3 | | 643859-8 | * TERMINAL | 1 | PC. |
| | 4 | | 644808-8 | * INSULATOR COMPLETE | 1 | PC. |
| 10 | | | 419665-1 | SWITCH LEVER | 1 | PC. |
| 11 | | | 265995-6 | TAPPING SCREW 4X18 | 2 | PC. |
| 12 | | | 419281-9 | REAR COVER | 1 | PC. |
| 13 | | | 643829-7 | BRUSH HOLDER CAP | 2 | PC. |
| 14 | 1 | | 194435-6 | CARBON BRUSH CB-441 2PC/SET (W/O ORIGIN) - N/L/A | 1 | SET |
| | 2 | | 195022-4 | CARBON BRUSH CB-441, 2PCS/SET, W/ORIGIN | 1 | SET |
| 15 | | | 911263-2 | PAN HEAD SCREW M5X40 | 3 | PC. |
| 16 | 1 | | 643825-5 | * BRUSH HOLDER | 1 | PC. |
| | 2 | | 643897-0 | * BRUSH HOLDER | 1 | PC. |
| 17 | 1 | | 643824-7 | * BRUSH HOLDER | 1 | PC. |
| | 2 | | 643898-8 | * BRUSH HOLDER | 1 | PC. |
| 19 | 1 | | 158604-3 | * MOTOR HOUSING COM | 1 | PC. |
| | 2 | | 141528-0 | * MOTOR HOUSING COM | 1 | PC. |
| 20 | | | 638571-3 | YOKE UNIT | 1 | PC. |
| 21 | | | 419285-1 | BAFFLE PLATE | 1 | PC. |
| 22 | | | 266292-3 | TAPPING SCREW 4X65 | 2 | PC. |
| 23 | | | 210045-2 | BALL BEARING 627DDW | 1 | PC. |
| 24 | | | 510095-0 | ARMATURE ASSY (INCLUDES ITEMS 23, 25 & 26) | 1 | PC. |
| 25 | | | 241869-5 | FAN 55 | 1 | PC. |
| 26 | | | 211061-7 | BALL BEARING 6000LLB | 1 | PC. |
| 27 | 1 | | 345659-9 | SHAFT LOCK 102MM | 1 | PC. |
| | 2 | | 346059-6 | SHAFT LOCK 104MM | 1 | PC. |
| 28 | | | 233092-6 | COMPRESSION SPRING 5 | 1 | PC. |
| 31 | | | 158617-4 | BLADE CASE COM. (TYPE1 W/LABEL, TYPE2 W/O LABEL) | 1 | PC. |
| | INC. | | 213434-0 | O-RING 26 | 1 | PC. |
| | INC. | | 816847-0 | OPERATIONAL INDICATION LABEL (TYPE1 ONLY) | 1 | PC. |
| 33 | | | 262049-0 | RUBBER RING 6 | 1 | PC. |
| 34 | | | 251368-9 | + COUNTERSUNK SCREW M6 | 1 | PC. |
| 35 | | | 210028-2 | BALL BEARING 606ZZ | 1 | PC. |
| 36 | | | 961052-5 | RETAINING RING S-12 | 1 | PC. |
| 37 | | | 227156-6 | SPUR GEAR 52 | 1 | PC. |
| 38 | | | 257173-2 | RING 12 | 1 | PC. |
| 39 | | | 213512-6 | O RING 39 | 1 | PC. |
| 40 | | | 265034-2 | + COUNTERSUNK HEAD SCREW M5X16 | 2 | PC. |
| 41 | | | 318009-1 | BEARING BOX | 1 | PC. |
| 42 | | | 210109-2 | BALL BEARING 6001DDW | 1 | PC. |
| 43 | | | 324626-7 | SPINDLE | 1 | PC. |
| 44 | | | 285845-9 | BEARING RETAINER 19-29 | 1 | PC. |
| 45 | | | 345469-4 | THICKNESS RING | 1 | PC. |
| 46 | | | 231821-1 | TENSION SPRING 3 | 1 | PC. |
| 47 | | | 419280-1 | SAFETY COVER | 1 | PC. |
| 48 | | | 961152-1 | RETAINING RING (EXT) S-34 | 1 | PC. |
| 49 | | | 224411-7 | INNER FLANGE 35 | 1 | PC. |
| 50 | | | 224409-4 | OUTER FLANGE 35 | 1 | PC. |
| 51 | | | 266133-3 | HEX. SOCKET HEAD BOLT M6X20 | 1 | PC. |
| 56 | | | 961014-3 | STOP RING E-8 | 1 | PC. |

| Item No | Type | Ref | Part No | Description | Qty | Unit |
|---------|------|-----|----------|-----------------------------|-----|------|
| 57 | | | 272229-0 | LEVER 40 | 1 | PC. |
| 58 | | | 252158-3 | HEX.NUT M6 | 1 | PC. |
| 59 | | | 941151-9 | FLAT WASHER 6 | 1 | PC. |
| 60 | | | 345658-1 | DEPTH GUIDE | 1 | PC. |
| 61 | | | 252103-8 | HEX. LOCK NUT M5-8 | 1 | PC. |
| 62 | | | 345657-3 | ANGULAR GUIDE | 1 | PC. |
| 65 | | | 265056-2 | + PAN HEAD SCREW M5 | 1 | PC. |
| 66 | | | 266194-3 | FLAT HEAD SCREW M6X90 | 1 | PC. |
| 67 | | | 256480-0 | SHOULDER PIN 6-7 | 1 | PC. |
| 68 | | | 256480-0 | SHOULDER PIN 6-7 | 1 | PC. |
| 69 | | | 266264-8 | HEX. SOCKET HEAD SCREW M5X6 | 1 | PC. |
| 70 | | | 251919-8 | CAP SQUARE NECK BOLT M6X20 | 1 | PC. |
| 71 | | | 231007-7 | COMPRESSION SPRING 6 | 1 | PC. |
| 72 | | | 251896-4 | SCREW M5X20 | 1 | PC. |
| 73 | | | 941151-9 | FLAT WASHER 6 | 1 | PC. |
| 76 | | | 252133-9 | HEX. NUT M6 | 1 | PC. |
| 77 | | | 961014-3 | STOP RING E-8 | 1 | PC. |
| 78 | | | 272251-7 | LEVER 30 | 1 | PC. |
| 79 | | | 266264-8 | HEX. SOCKET HEAD SCREW M5X6 | 1 | PC. |
| 81 | | | 154831-0 | BASE COMPLETE | 1 | PC. |
| 82 | | | 266229-0 | HEX. SOCKET SET SCREW M5X8 | 1 | PC. |
| 85 | | | 253186-1 | FLAT WASHER 7 | 1 | PC. |
| D01 | | | 654509-0 | CONNECTOR 2-SD | 2 | PC. |
| E01 | | | 620259-9 | CONTROLLER | 1 | PC. |

ACCESSORIES

- See catalogue or visit www.makita.ca for more accessories information -

| | | | | | | |
|-----|-----|------|-----------|--|---|-----|
| A01 | | | 164095-8 | GUIDE RULE | 1 | PC. |
| A02 | | | 783203-8 | HEX. WRENCH 5 | 1 | PC. |
| A03 | | | P-80012 | DUST NOZZLE | 1 | PC. |
| A04 | | | A-85092 | 6-1/2" C.T.SAW BLADE 24T | 1 | PC. |
| | | | T-01395 | 6-1/2" C.T.SAW BLADE 16T | 1 | PC. |
| | | | T-01404 | 6-1/2" C.T.SAW BLADE 24T | 1 | PC. |
| | | | T-01410 | 6-1/2" C.T.SAW BLADE 40T | 1 | PC. |
| | | | T-01426 | 6-1/2" C.T.SAW BLADE 16T/24T 2PC/SET | 1 | SET |
| A05 | 1 | | DC18RA | CHARGER DC18RA | 1 | PC. |
| | 2 | | DC18RC | CHARGER DC18RC | 1 | PC. |
| | | | DC18SD | CHARGER DC18SD | 1 | PC. |
| | | | DC18SE | AUTOMOTIVE CHARGER DC18SE | 1 | PC. |
| | | | DC18RAKIT | CHARGER + BATTERY (DC18RA+BL1830) | 1 | SET |
| | | | DC24SC | CHARGER F/ 7.2-24V, 1.3-3.3AH BATTERY | 1 | PC. |
| A06 | | | 194205-3 | 18V LI-ION BATTERY BL1830 | 1 | PC. |
| | | | 194230-4 | 18V LI-ION BATTERY BL1830(3.0AH), 2/PK | 1 | SET |
| | | | 194288-3 | 18V LI-ION BATTERY BL1830 (3.0AH), 10/PK | 1 | SET |
| A07 | 1 | | 824757-7 | PLASTIC CARRYING CASE | 1 | PC. |
| | | INC. | 163455-1 | LATCH | 2 | PC. |
| | | INC. | 419360-3 | HANDLE | 1 | PC. |
| | 2 | | 141353-9 | PLASTIC CARRYING CASE COMPLETE | 1 | PC. |
| | | INC. | 163455-1 | LATCH | 2 | PC. |
| | | INC. | 419360-3 | HANDLE | 1 | PC. |
| | Opt | | 821010-X | TOOL BAG 14" | 1 | PC. |
| A08 | | | 194649-7 | BATTERY PROTECTOR (F/BL1430, BL1830) | 1 | PC. |
| A09 | | | 450128-8 | BATTERY COVER (F/LI-ION) | 1 | PC. |