



# SERVICE PARTS LIST

BUL. 54-08-1050

## 1/2" ELECTRIC DRILL

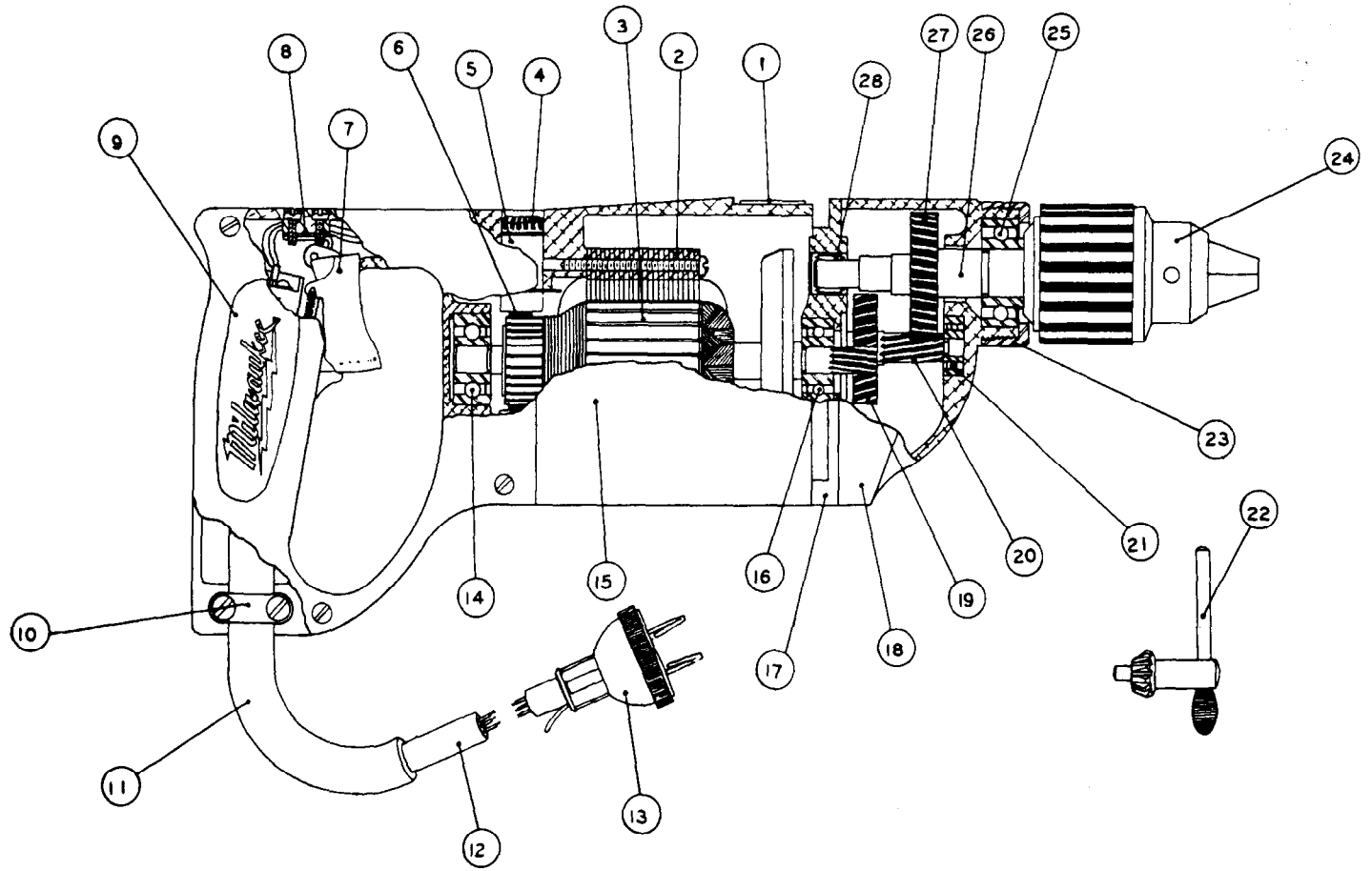
**MODEL NO. BF-312**

Starting Serial No. **17-1001**

REVISED BUL 617      DATE Feb. '68

WIRING INSTR.

Both Model and Serial No. must be furnished to obtain correct parts.



ILLUSTRATED PARTS

FIG.	PART NO.	DESCRIPTION OF PART	SEE NOTE	FIG.	PART NO.	DESCRIPTION OF PART	SEE NOTE
1	312-1	Name Plate		15	4BF-1	Motor Housing	J
2	12D-700A	Field Assembly	A	16	8039	Armature Ball Brg. (Pinion End)	K
3	12D-600B	Armature Assembly	B	17	12D-2	Diaphragm	L
4	44D-40	Brush Retaining Screw (2)		18	12D-3	Gear Case	M
5	44D-320	Brush Holder Assembly (2)		19	12D-14A	Intermediate Gear	N
6	44D-370	Carbon Brush Assembly (2)		20	12D-13	Intermediate Pinion	P
7	8909K144	Switch	C	21	#36	Inter. Shaft Ball Brg.	Q
8	4BF1-1	Switch Spacer	D	22	32CK	Chuck Key	
9	4BF1-2	Handle Cover	D	23	12D3-1	Bearing Cap	R
10	8B1-3	Cord Clamp Strap	E	24	33B-12	Chuck (1/2-20 thread)	S
11	48D-28	Cord Protector Tube	F	25	8502	Spindle Ball Bearing	
12	S#18-3	Cord		26	12D-8	Spindle	T
13	3P-1	Attachment Plug	G	27	12D-11	Spindle Gear	U
14	9009D	Armature Ball Brg. (Comm End)	H	28	MNB-31	Spindle Needle Bearing	V
MISCELLANEOUS PARTS NOT SHOWN							
5SF-23	Switch Bracket	W	1243-300	Handle Ring	DD		
22SK-41	Air Intake Cover Plate	X	44D-34	Brush Holder Insul. Washer	DD		
4MS29-1	Cord Clamp Retainer	Y	4BF-24	Switch Insulator	EE		
10AH-19	Body Ball Brg. Cover	Z	14S1-1	Name Plate Backing Fibre	FF		
4AB11-1	Spacer	AA	14S1-2	Key Clip	FF		
M-471	Inter. Shaft Needle Brg.	BB	1/8x3/16 Pipe Plug	Grease Plug	Z		
10AH-350	Brush Holder Lead Wire Assy.	CC	6BF-43	Pipe Handle	Z		
12D43-1A	Handle						

REFERENCE NOTES

- A - Use Part 12D-700 for Serial No. 17-6001 to 17-33001  
Use Part 10AH-700 Below Serial No. 17-6001
- B - Use Part 12D-600 for Serial No. 17-6001 to 17-33001  
Use Part 89B-600A for Serial No. 37136 & 17-1001 to 17-6001  
Use Part 89B-600 Below Serial No. 37136 & 17-1001
- C - Use Part 8235K8 or H&H80615B for Serial No. 37136 & 17-1001 to 49342 & 17-6001  
Use Part 8235K8 Below Serial No. 37136 & 17-1001
- D - Not used Below Serial No. 17-33001
- E - Use Part 4MS-29 for Serial No. 17-6001 to 17-33001  
Use Eastman Strain Reliever for Serial No. 37136 & 17-1001 to 49342 & 17-6001  
Use Part 10AH-29 Below Serial No. 37136 & 17-1001
- F - Not used for Serial No. 37136 & 17-1001 to 49342 & 17-6001
- G - Use Part 2P-1 Below Serial No. 17-33001
- H - Use Part 8009 Below Serial No. 17-6001
- J - Use Part 14SR-100D for Serial No. 17-6001 to 17-33001  
Use Part 6BF-1 Below Serial No. 17-6001
- K - Use Part 8009 Below Serial No. 37136 & 17-1001
- L - Part 3B-2, Below Serial No. 17-6001, No Longer Available \* See Note
- M - Part 4B-3 Serial No. 37136 & 17-1001, Not Longer Available \* See Note  
Part 12B-3 & 12B-4, Below Serial No. 37136 & 17-1001, No Longer Available \* See Note
- N - Use Part 12D-14 for Serial No. 17-6001 to 17-33001  
Use Part 89B-14 Below Serial No. 17-6001
- P - Use Part 12B-13B for Serial No. 37136 & 17-1001 to 49342 & 17-6001  
Use Part 12B-13 Below Serial No. 37136 & 17-1001
- Q - Use Part 7036 for Serial No. 37136 & 17-1001 to 49342 & 17-6001
- R - Use Part 4B3-1 for Serial No. 37136 & 17-1001 to 49342 & 17-6001  
Use Part 5AF4-6 Below Serial No. 37136 & 17-1001
- S - Use Part 33B-58 Below Serial No. 17-6001
- T - Use Part 12B-8A for Serial No. 37136 & 17-1001 to 49342 & 17-6001  
Use Part 12B-8 Below Serial No. 37136 & 17-1001
- U - Use Part 12B-11A for Serial No. 37136 & 17-1001 to 17-6001  
Part 12B-11, Below Serial No. 37136 & 17-1001, No Longer Available \* See Note
- V - Use Part B-57 Below Serial No. 37136 & 17-1001
- W - Use Part 5SF-23 for Serial No. 17-6001 to 17-33001  
Use Part 10AH-23 Below Serial No. 17-6001
- X - Use 22SK-41 Below Serial No. 17-33001
- Y - Use for Serial No. 17-6001 only.
- Z - Use Below Serial No. 17-6001 only.
- AA - Part 4AB11-1, Below Serial No. 17-6001, No Longer Available \* See Note
- BB - Part M-471 Not used Below Serial No. 17-6001  
Use Part 3200 Below Serial No. 17-6001
- CC - Use Part Below Serial No. 37136 & 17-1001 Only
- DD - Not Used Below Serial No. 17-6001
- EE - Use Part 5SF-24 for Serial No. 17-6001 to 17-33001  
Not Used Below Serial No. 17-6001
- FF - Use Part for Serial No. 17-6001 only.

\* For Parts No Longer Available, Write Factory For Possible Modification Thru Use of New Parts

IMPORTANT: BE SURE TO REFER TO REFERENCE NOTES