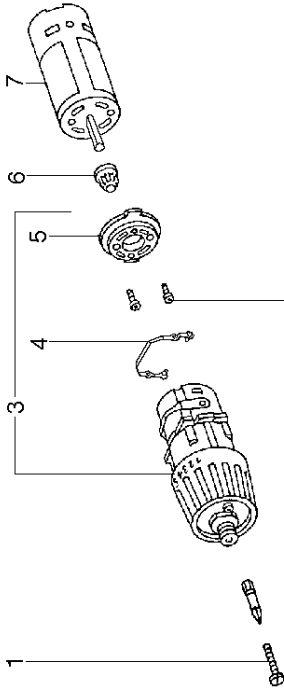
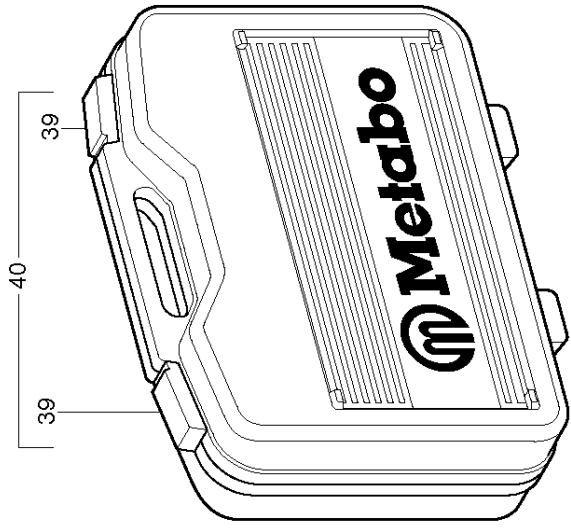


1001



1

3

4

5

6

7

8

9

10

11

9

12

13

14

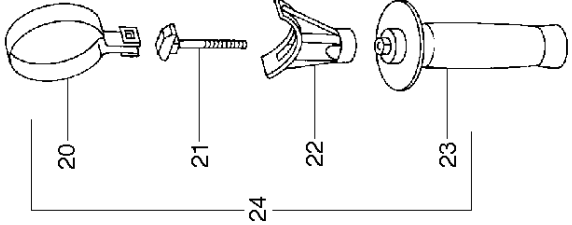
15

16

17

18

19



20

21

22

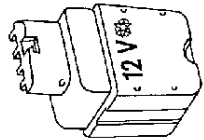
23

24

31

10

34



BE AT 112/2 R+L IMP. 602220421

ITEM	PART NO.	QTY.	PART DESIGNATION
0001	341702790	1	Cap screw
0003	316024380	1	Gear-box cpl.
0004	339127240	1	Shift strap
0005	343369630	1	Flange
0006	340032050	1	Pinion
0007	317001920	1	DC-motor 12 v
0008	338035630	1	Rating plate
0009	141113180	7	Self-tap. fill. h. screw
0010	343369320	1	Motor housing
0011	141181690	1	Circlip
0012	141111060	2	Cap screw
0013	343406550	1	Switch
0014	338113110	1	Indication label
0015	339127050	1	Shift sheet
0016	339127230	1	Spacer sheet
0017	342002250	2	Pressure spring
0018	343369620	1	Switch slide
0019	343406480	1	Operating device cpl
0020	339127060	1	Clamping band
0021	341702460	1	T-head bolt
0022	343369370	1	Clamping piece
0023	314000550	1	Handle
0024	314000680	1	Support handle cpl.
0025	343369130	1	Housing plug
0026	342002230	1	Pressure spring
0027	339126990	1	Cover
0028	343369270	1	Slide
0029	341055370	1	Latch
0030	342002240	1	Pressure spring
0031	338111010	1	Metabo label
0034	338111280	1	Indication label
0039	316028190	1	Carry case lock set (left and
0040	344451860	1	PLASTIC CARRY CASE
1001	xxxxxxxxx	1	Diagram