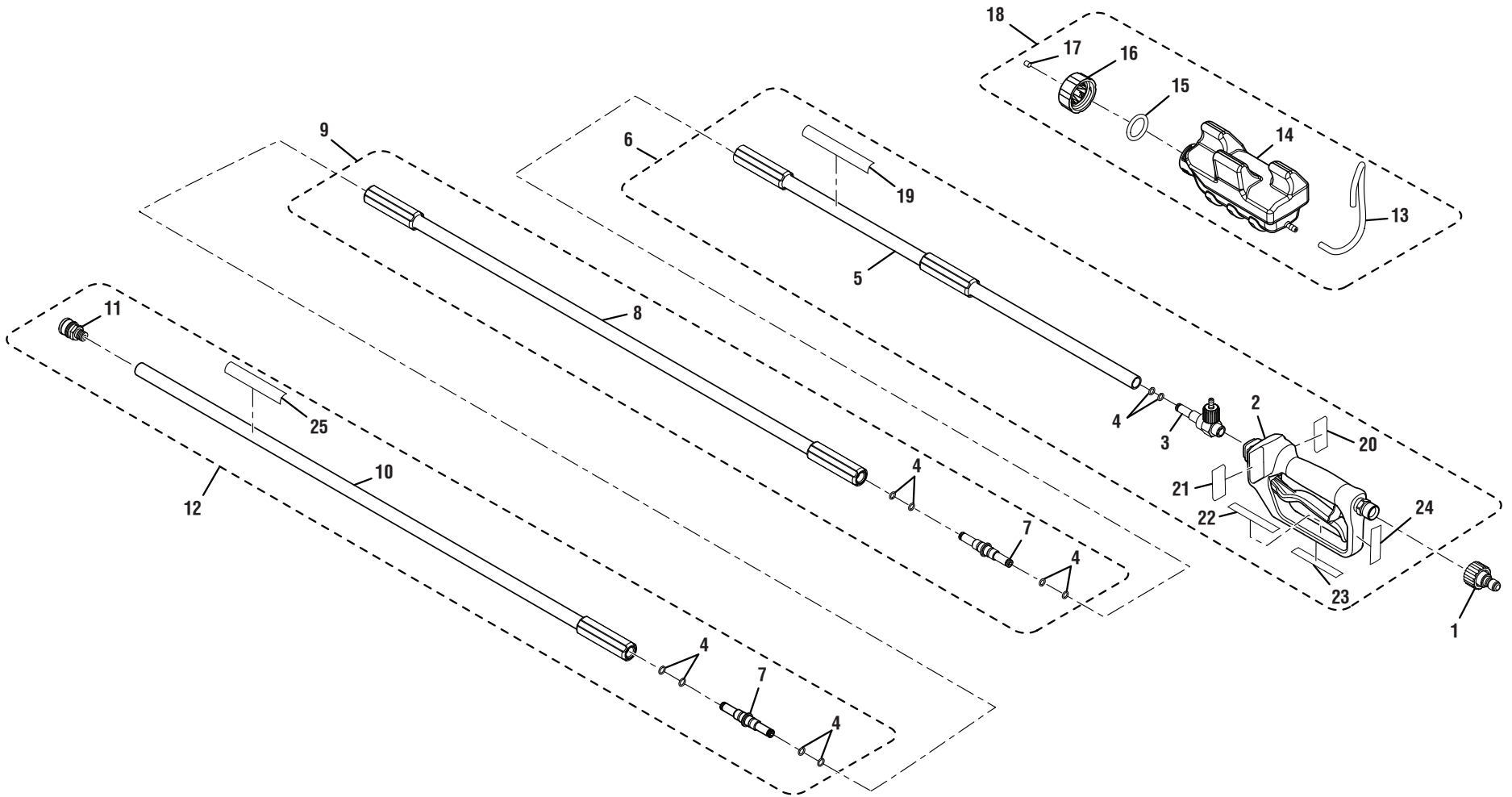


# POWERCARE EXTENSION POLE – MODEL NO. AP31050B

The model number will be found on a label attached to the housing. Always mention the model number in all correspondence regarding your **EXTENSION POLE** or when ordering replacement parts.



**POWERCARE EXTENSION POLE – MODEL NO. AP31050B**

The model number will be found on a label attached to the housing. Always mention the model number in all correspondence regarding your **EXTENSION POLE** or when ordering replacement parts.

**PARTS LIST**

| <b>KEY NO.</b> | <b>PART NUMBER</b> | <b>DESCRIPTION</b>   | <b>QTY</b> | <b>KEY NO.</b>       | <b>PART NUMBER</b> | <b>DESCRIPTION</b>   | <b>QTY</b> |
|----------------|--------------------|--|------------|----------------------|--------------------|--|------------|
| 1              | 308078004          | Inlet Coupler .....  | 1          | 15                   | 570612002          | Soap Cap O-Ring .....                                      | 1          |
| 2              | 308083005          | Spray Wand Handle.....   | 1          | 16                   | 518793002          | Soap Cap.....  | 1          |
| 3              | 308951006          | Detergent Metering Valve .....   | 1          | 17                   | 900777001          | Filter.....  | 1          |
| 4              | 570611003          | O-Ring .....   | 12         | 18                   | 310658004          | Detergent Container Assembly<br>(Inc. Key Nos. 13-17)..... | 1          |
| 5              | 678777004          | Extension Wand w/ Rubber Grip.....   | 1          | 19                   | 940654104          | Icon Strip .....   | 1          |
| 6              | 308494038          | Handle Assembly<br>(Incl. Key Nos. 2-5 and 19-24).....                     | 1          | 20                   | 940705123          | Logo Label.....  | 1          |
| 7              | 678236006          | Adaptor.....   | 2          | 21                   | 940324025          | Warning Label (English) .....                              | 1          |
| 8              | 678777002          | Extension Wand (Middle).....   | 1          | 22                   | 940324018          | Warning Label (French).....                                | 1          |
| 9              | 308494034          | Extension Wand (Middle) Assembly<br>(Incl. Key Nos. 4 and 7-8).....        | 1          | 23                   | 940489003          | Data Label .....   | 1          |
| 10             | 678777003          | Extension Wand (Upper).....  | 1          | 24                   | 940324026          | Warning Label (Spanish).....                               | 1          |
| 11             | 308637004          | Quick Connect Coupler.....   | 1          | 25                   | 940734073          | “Spray Wand Not Included” Label .....                      | 1          |
| 12             | 308494035          | Extension Wand (Upper) Assembly<br>(Inc. Key Nos. 4, 7, 10-11 and 25)..... | 1          | <b>Not Shown:</b>    |                    |  |            |
| 13             | 561399005          | Hose .....   | 1          | 988000183            | Operator’s Manual  |  |            |
| 14             | 518792004          | Detergent Container .....  | 1          | 12-15-11<br>(Rev:02) |                    |  |            |