



BOSCH

Shower

AGD TRIPOD | 0 600 800 481

Table of Content

| | |
|--------------------------|---|
| Spare parts list..... | 2 |
| Illustration - Type..... | 3 |

Spare parts list

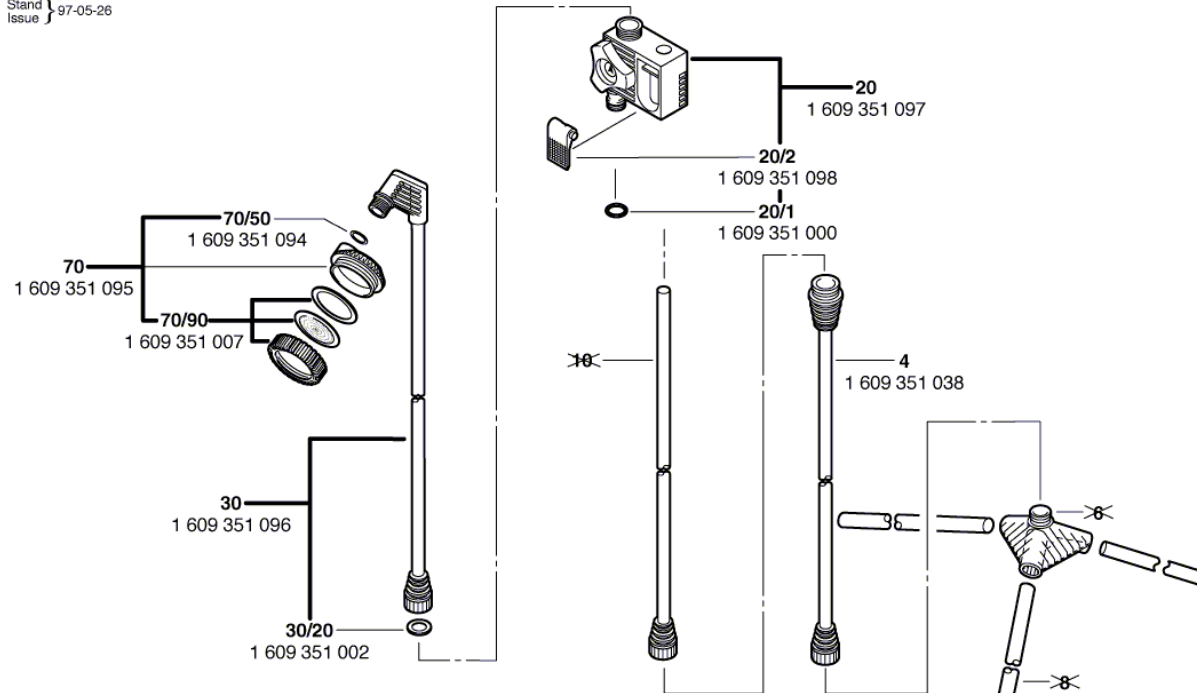
| Item | Part Number | Description | Illustration | Price | Quantity | Price Group |
|-------|---------------|-----------------------|--------------|-------|----------|-------------|
| 4 | 1 609 351 037 | Extension Tube | 1 | - | 1 | |
| 20 | 1 609 351 097 | Valve | 1 | - | 1 | |
| 20/1 | 1 609 351 000 | O-Ring 11x2,5 MM | 1 | - | 1 | |
| 20/2 | 1 609 351 098 | Tensioning Lever | 1 | - | 1 | |
| 30 | 1 609 351 096 | Hose Coupling Pipe | 1 | - | 1 | |
| 30/20 | 1 609 351 002 | Gasket Ø15xØ24x3=3/4" | 1 | - | 1 | |
| 70 | 1 609 351 095 | Spray | 1 | - | 1 | |
| 70/50 | 1 609 351 094 | O-Ring 12,5x1,6 MM | 1 | - | 1 | |
| 70/90 | 1 609 351 007 | Parts Set | 1 | - | 1 | |

* Prices shown are suggested retail prices

Illustration - Type - E

Typ 0 600 800 481 = AGD TRIPOD

Stand } 97-05-26
Issue }



Änderungen vorbehalten
Modifications reserved
Modificaciones reservadas
Salvo modificaciones
Robert Bosch GmbH
Geschäftsbereich Elektrowerkzeuge
70745 Leinfelden-Echterdingen