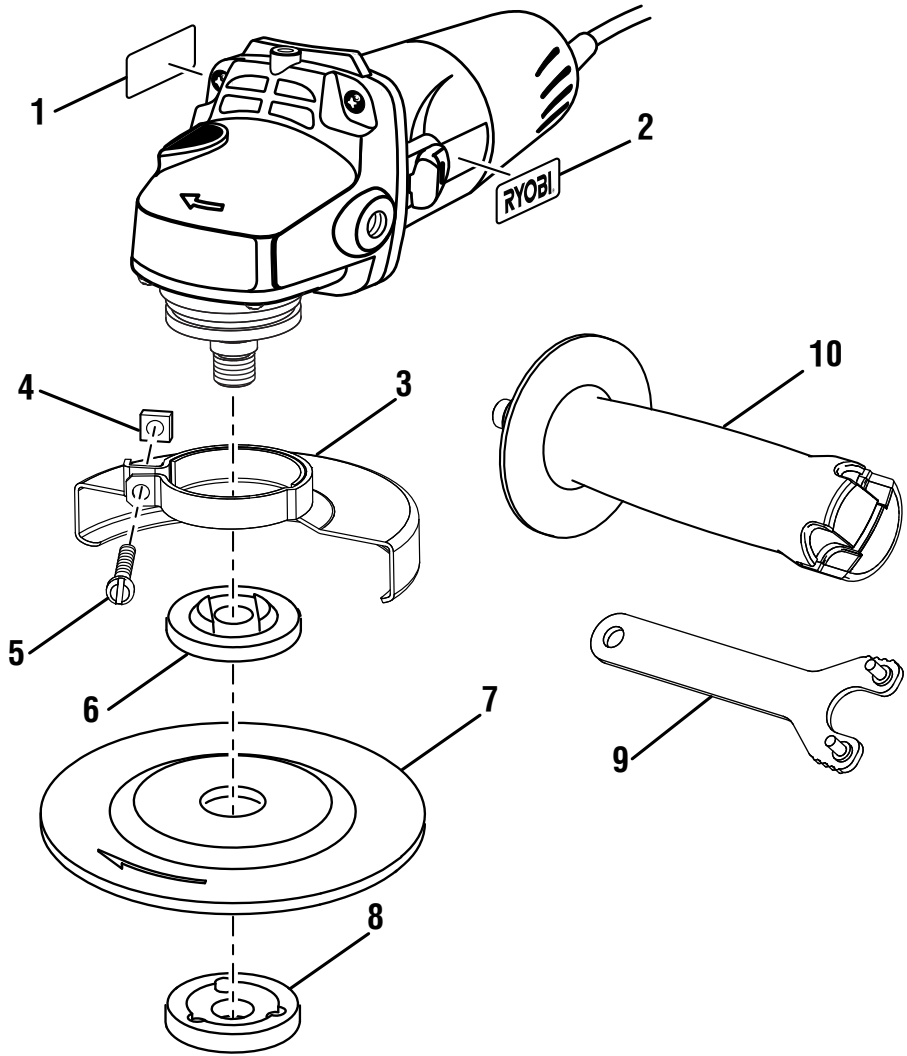


## RYOBI ANGLE GRINDER – MODEL NUMBER AG403

The model number will be found on a label attached to the motor housing. Always mention the model number in all correspondence regarding your **ANGLE GRINDER** or when ordering repair parts.



### PARTS LIST

KEY NO.	PART NUMBER	DESCRIPTION	QTY
1	039029008001	Data Label .....	1
2	039029001032	Logo Label.....	1
3	039029001001	Wheel Guard .....	1
4	039029001031	Square Nut (M5) .....	1
5	039029001002	Screw (M5 x 16 mm) .....	1
6	039029001042	Disc Flange.....	1
7	039028001051	Grinding Wheel.....	1
8	039028001001	Clamp Nut (5/8-11).....	1
9	039028001052	Wrench .....	1
10	039028001055	Auxilliary Handle.....	1

**NOT SHOWN:**  
 039028002021 Power Cord Label  
 990000434 Operator's Manual (039029008004)  
 4-19-13  
 (Rev:01)

**WARNING:** Improper repair of a double insulated tool can result in damage to the double insulation system possibly causing electrical shock or electrocution. Any repairs requiring disassembly of your tool requires safety testing and should only be performed by a Ryobi Authorized Service Center. For the service center nearest you call 1-800-525-2579.