

RIDGID
AC9946 MITER SAW UTILITY VEHICLE
REPAIR SHEET

RIDGID
AC9946 CHARIOT UTILITAIRE POUR
SCIE À ONGLETS
FEUILLE DE RÉPARATION

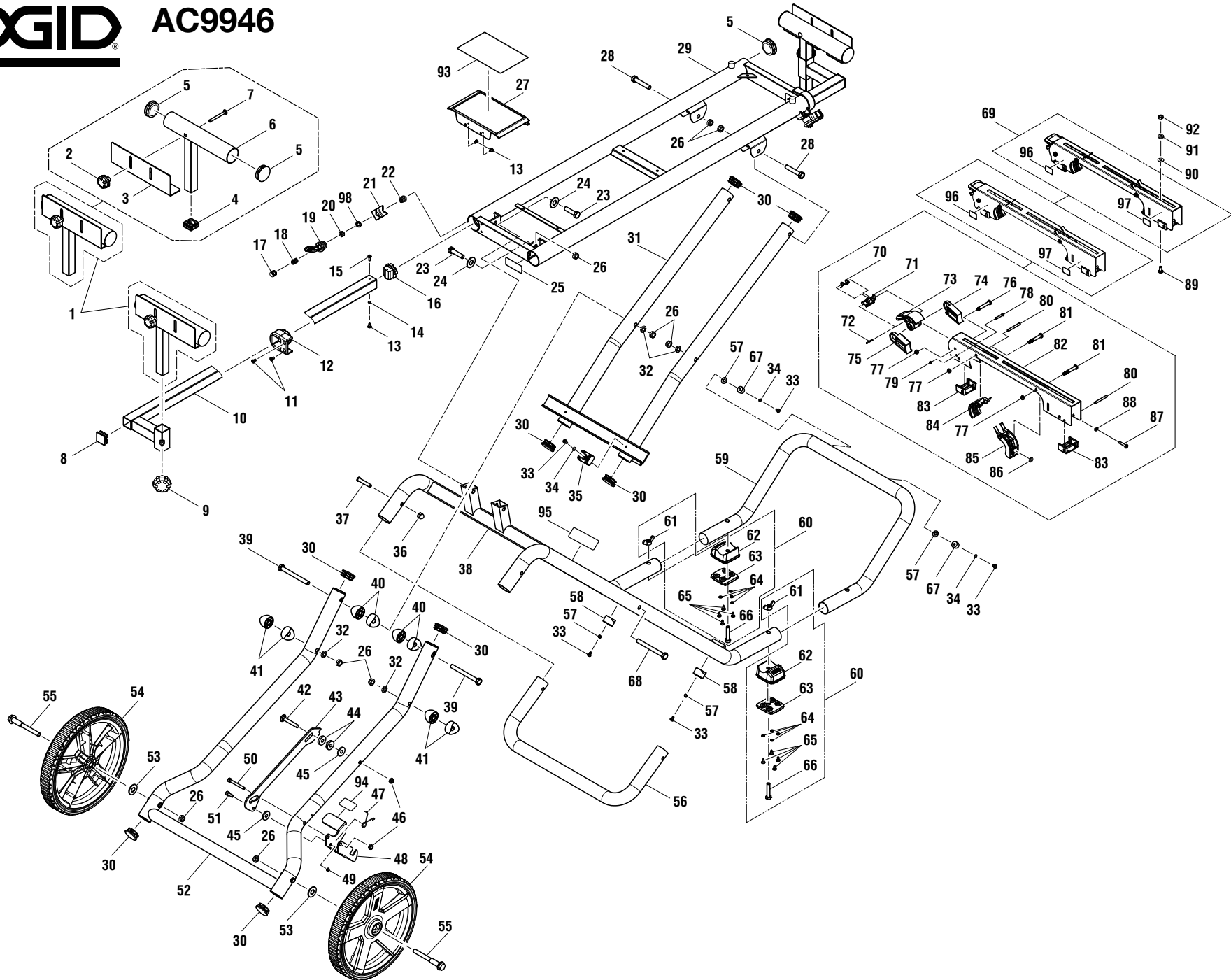
RIDGID
AC9946 CARRO DE SERVICIO PARA
SIERRAS INGLETEADORAS
LISTAS DE PIEZAS DE REPUESTO

ONE WORLD TECHNOLOGIES, INC.

P.O. Box 1427

Anderson, SC 29622, USA

1-866-539-1710 ■ www.RIDGID.com





AC9946

KEY	P/N	DESCRIPTION	QTY	KEY	P/N	DESCRIPTION	QTY	KEY	P/N	DESCRIPTION	QTY
1	089041030707	Work Support Assembly (Incl. Key Nos. 2-7)	2	35	089041030021	Glide (D35)	2	68	089110102206	Screw (M10 x 105 mm, Hex Soc. Hd.)	2
2	089041030026	Knob	2	36	000999131017	Hex Nut (M8)	2	69	000999131701	Saw Mounting Bracket Assembly (Incl. Key Nos. 70-88)	2
3	000999131047	Work Plate	2	37	000999131016	Screw (M8 x 45 mm, Pan Hd.)	2	70	000999131059	Torsion Spring (D0.8 mm)	2
4	000999131045	End Cap (25 mm)	2	38	089041030704	Outer Brace	1	71	000999131058	Lock Lever Release Trigger	2
5	000900181017	End Cap (D45.5 mm)	6	39	089110102226	Screw (M10 x 115 mm, Hex Soc. Hd.)	2	72	089110101186	Spring Pin (M4 x 30 mm)	2
6	000999131044	Work Support	2	40	000999131007	Spacer (D34 mm, Long)	4	73	000999131053	Lock Lever Handle	2
7	000999131046	Carriage Bolt (M6 x 60 mm)	2	41	000999131006	Spacer (D34 mm, Short)	4	74	000999131054	Left Cam	2
8	000900181013	End Cap (30 mm)	2	42	000999131020	Bolt (M8 x 55 mm)	1	75	000999131055	Right Cam	2
9	089041030025	Adjustment Knob	2	43	089041030004	Latch Plate	1	76	000900181053	Screw (Cross, Special)	2
10	000999131042	Support Arm	2	44	000999131021	Washer (ID8.2 x OD18 x 3t)	2	77	000900181039	Lock Nut (M6)	6
11	000900181023	Screw (M5 x 12, Flat Hd.)	4	45	000999131062	Washer (ID8.2 x OD32 x 1.5t)	2	78	000999131063	Screw (M4 x 42 mm, Pan Hd.)	2
12	089041030008	Lock Lever Housing	2	46	000999130010	Lock Nut (M8)	2	79	000999131061	Hex Nut (M4)	2
13	000999131032	Screw (M4 x 12 mm, Pan Hd.)	4	47	000999131023	Torsion Spring (D1.5 mm x 2.7)	1	80	000999131056	Spring Pin (D5 x 45 mm)	4
14	000999131033	Washer (D5)	2	48	089041030023	Release Lever	1	81	000900181052	Screw (Special)	4
15	000999131034	Screw (M4 x 12 mm, Pan Hd.)	2	49	089110102027	Lock Nut (M6)	1	82	000999131057	Saw Mounting Bracket	2
16	000900181022	Sliding Pad	2	50	000999131025	Screw (M8 x 60 mm)	1	83	089041030027	Mounting Bracket End Cap	4
17	089041030006	Knob	2	51	000999131022	Screw (M6 x 15 mm)	1	84	000900181051	Front Clamping Bracket	2
18	089041030015	Compression Spring (D1 x 5)	2	52	089041030705	Center Brace (Lower)	1	85	000900181050	Clamping Bracket	2
19	089041030007	Lock Lever	2	53	000999131028	Washer (D10 x D26 x 2t)	2	86	000900181049	Clamp Protector	2
20	089041030016	Hex Nut (M8)	2	54	089041030005	Wheel	2	87	000900181047	Screw (M6 x 30 mm, Pan Hd.)	2
21	000999130007	Lock Lever Clamp	2	55	089041030014	Bolt (M10 x 97 mm)	2	88	000900181048	Hex Nut (M6)	2
22	000999130018	Compression Spring	2	56	089041030002	Handle	1	89	089041030018	Carriage Bolt (M8 x 30 mm - smaller saws)	4
23	089041030030	Screw (M10 x 45 mm, Hex Soc. Hd.)	2	57	089041030019	Washer (ID6.5 x OD20 x 1.6t)	4	000999131052	Carriage Bolt (M8 x 50 mm - larger saws)	4	
24	000999131004	Washer (ID10.5 x OD28 x 2t)	2	58	089041030024	Bumper (Outer Brace)	2	90	000999131051	Washer (ID8 x OD16 x 2t)	4
25	089041030903	Data Label	1	59	089041030003	Frame Support	1	91	000999131050	Lock Washer (D8)	4
26	089110102201	Lock Nut (M10)	10	60	089041030706	Stand Feet Assembly (Incl. Key Nos. 61-66)	2	92	000999131049	Hex Nut (M8 x 1.25)	2
27	089041030702	Accessory Tray	1	61	089041030013	Wing Nut (M8, Cheese Hd.)	2	93	089041030908	Warning Label	1
28	000999131003	Screw (M10 x 55 mm, Hex Soc.)	2	62	089041030012	Stand Feet	2	94	089041030910	Release Lever Label	1
29	089041030701	Frame Assembly (Top Rails)	1	63	000999131011	Stand Feet (Rubber)	2	95	000999131904	Logo Label	2
30	000999131027	End Cap (D38.1 mm)	8	64	089041030011	Washer (ID4.2 x OD12 x 1t)	8	96	000999131903	Warning Label (Bracket)	2
31	089041030703	Center Brace (Upper)	1	65	089041030010	Screw w/Washer (M4 x 10 mm / ID4.2 x OD12 x 1t)	8	97	000999131905	Logo Label	2
32	089041030020	Hex Nut (M10)	4	66	089041030009	Screw (M8 x 55 mm, Pan Hd.)	2	98	089041030022	Washer (ID8 x OD16 x 1.5t)	2
33	089110102157	Screw (M6 x 18 mm)	6	67	089110102199	Bumper (Frame Support)	2				
34	089110102224	Washer (ID6.5 x OD10 x 0.8t)	4								

NOT SHOWN:

991000678 Operator's Manual (089041030901)
8-10-18
(Rev:02)