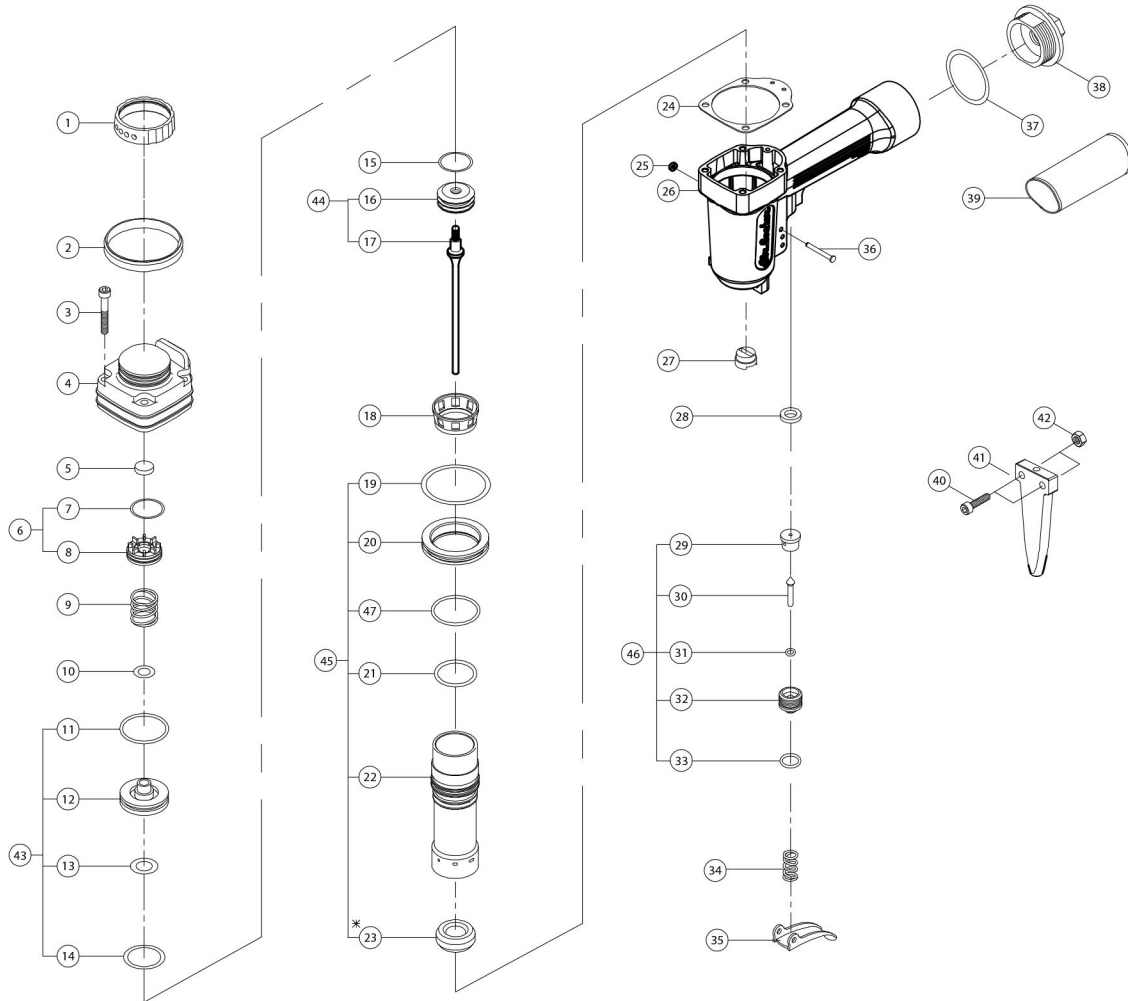


Air Locker

Model # AP900



S.No.	DESCRIPTION	Qty.	S.No.	DESCRIPTION	Qty.
1	Exhaust Cover	1	26	Body	1
2	Handle Grip	1	27	Nozzle	1
3	Screw M5*35	4	28	Seal, Air T=2.5	1
4	Cylinder Cap	1	29	Upper Housing	1
5	Seal, Air	1	30	Remote Core	1
6	Exhaust Valve Assembly	1	31	O-Ring 3.5*1.5	1
7	O-Ring 22.9*1.5	1	32	Trigger Valve Guide	1
8	Trigger Valve Head	1	33	O-Ring 11*1.9	1
9	Feeder Spring	1	34	Feeder Spring	1
10	O-Ring 9.8*2.4	1	35	Trigger	1
11	O-Ring 36.3*2.55	1	36	Pin	1
12	Firing Valve Piston	1	37	O-Ring 37.5*3.55	1
13	O-Ring 13*3	1	38	Tail Cover	1
14	O-Ring 24.5*3	1	39	Handle Grip	1
15	O-Ring 22.9*2.7	1	40	Screw M5*30	2
16	Piston Head	1	41	Driver Guide	1
17	Driver Blade	1	42	Nut M5	2
18	Collar	1	43	Head Valve Piston Set	1
19	O-Ring 44.8*2.6	1	44	Piston Set	1
20	Spacer	1	45	Cylinder Set	1
21	O-Ring 26.59*2.95	1	46	Trigger Valve Set	1
22	Cylinder	1	47	O-Ring 32*2.5	1
23	Bumper	1			
24	Gasket	1			
25	Ring 5.5*2	1			