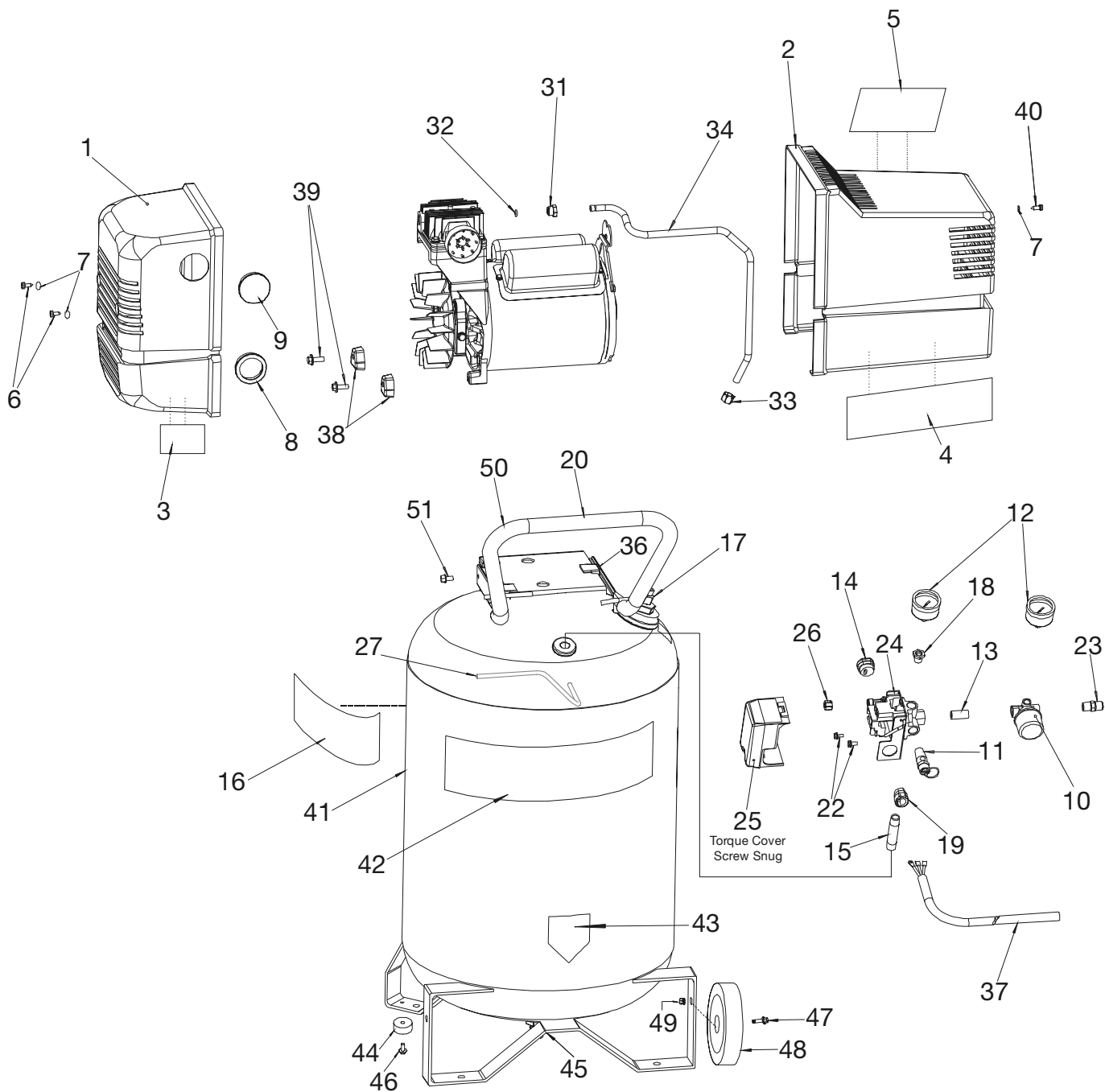
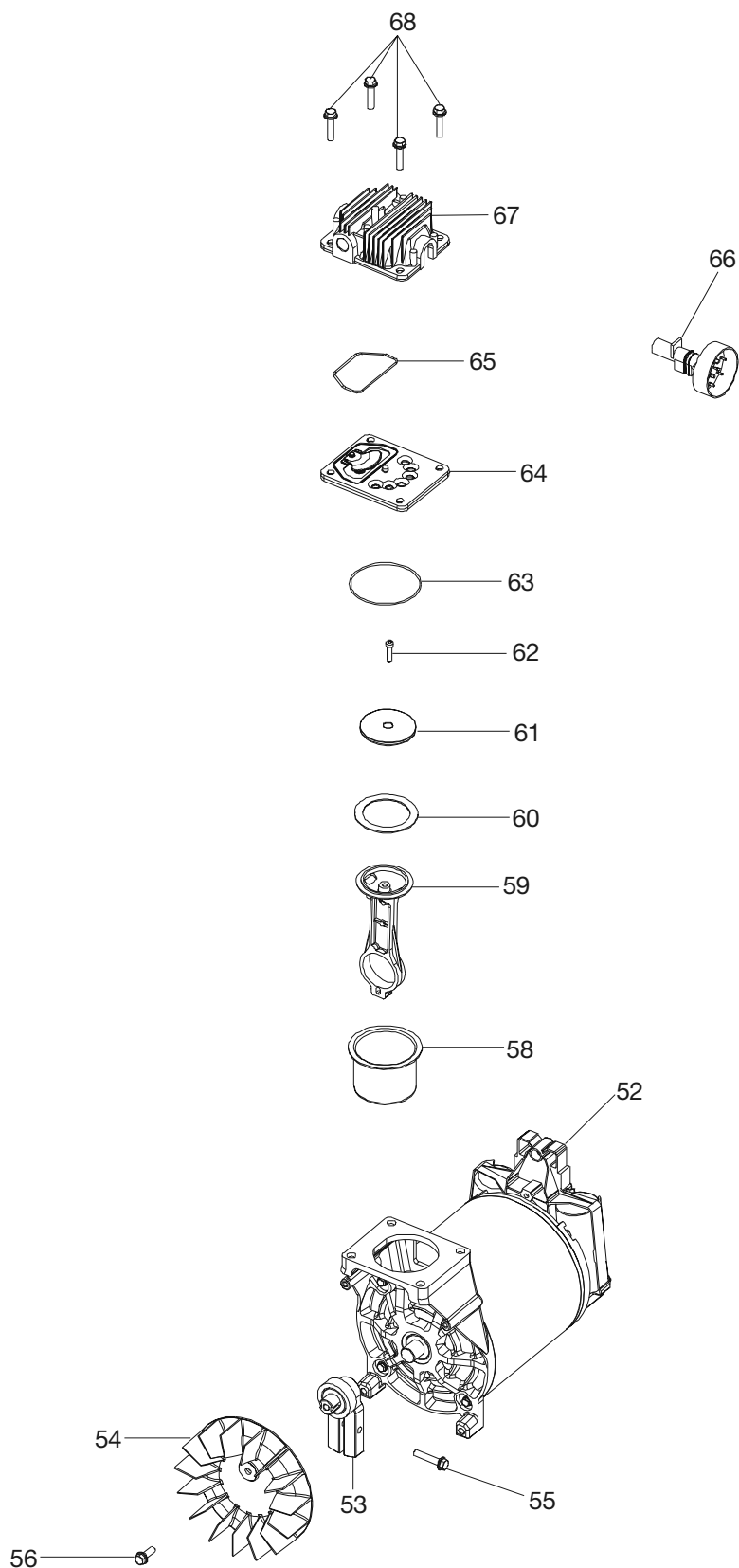


AIR COMPRESSOR DIAGRAM



COMPRESSOR PUMP DIAGRAM



PARTS LIST

KEY	NO.	PART NUMBER	DESCRIPTION
	1	CAC-1317	Shroud, Front
	2	AC-0029	Shroud, Rear
	3	LA-3372	Label, Performance
	4	D20337	Label, Billboard
	5	LA-3162	Label, Maintenance
	6	SSF-553-1	Screw #10 - 24 x 9/16 Pan HD (2 used - Torque 15-25 in.-lbs.)
	7	SSG-3102	O-ring (2 used)
x	8	CAC-1373	Filter Retainer
x	9	CAC-1372	Filter Foam
	10	CAC-4296-1	Regulator
	11	TIA-4150	Safety Valve
	12	Z-GA-352	Gauge (2 used)
	13	SS-1286	Nipple, 1/4 - 18 NPT
	14	SSW-7367	Strain Relief Bushing
	15	SSP-480	Nipple, 1/4 x 2.5"
	16	LA-3021	Label Warning
	17	AC-0631	Check Valve
	18	SSP-6021	Bushing Reducer
	19	SSW-7385	Strain Relief Bushing
	20	AC-0558	Handle Grip
	22	SUDL-9-1	Screw 8 - 32 (2 used)
	23	H-2099	Adaptor
	24	Z-AC-0746	Pressure Switch
	25	-----	Pressure Switch Cover (Included in Key #24)
	26	SSP-7811	Nut/Sleeve Assy.
	27	AC-0630	Pressure Relief Tube
	31	SSP-7821-1	Nut, Compression (Torque 100-120 in.-lbs.)
	32	SSG-3105	O-ring
	33	SSP-7813	Nut/Sleeve Assy.
	34	AC-0292	Outlet Tube
	36	AC-0716	Isolator (3 used)
	37	SUDL-413-2	Cord Assembly
	38	ACG-18	Cup, Saddle Mount (2 used)
	39	91895680	Screw, 1/4 - 20 x .75 (2 used - Torque 9-12 ft.-lbs.)
	40	SSF-626	Screw #10-16 x .88 Pan TX (Torque 15-25 in.-lbs.)
	41	Z-TA-4490	Tank - 30 Gal.
	42	LA-3069	Label, Sears Craftman
	43	LA-3027	Label, Drain Tank
	44	SST-107	Recess Rubber Bumper (2 used)
	45	AC-0430	Drain Valve
	46	SSF-630	Screw (2 used)
	47	CAC-60	Shoulder Bolt (2 used)
	48	CAC-4313	Wheel, 10" (2 used)
	49	SSF-8080-ZN	Nut, Hex 3/8" (2 used)
	50	AC-0609	Handle
	51	SSF-981	Screw (4 used - Torque 15-25 in.-lbs.)

PARTS LIST

KEY NO.	PART NUMBER	DESCRIPTION
52	Z-MO-9083	Motor
53	Z-AC-0140	Eccentric Bearing Assy.
54	AC-0108	Fan
55	SSF-615	Screw 1/4-20 (Torque 100-120 in.-lbs.)
56	SSF-586	Screw 1/4 - 20 (Torque 100-120 in.-lbs.)
+ • 58	AC-0263	Sleeve, Cylinder
• 59	ACG-2	Connecting Rod
+ • 60	DAC-308	Compression Ring
• 61	ACG-29	Connecting Rod Cap
+ • 62	SSF-3158-1	Screw, #10-24
+ 63	SSG-8156	O-ring
64	Z-AC-0032	Valve Plate Assy.
+ • 65	ACG-45	O-ring, Head
66	CAC-1371	Muffler
67	AC-0037	Head
68	SSF-927	Screw 1/4" - 20 x 1 1/8" (4 used - Torque 7-10 ft.-lbs.)

NOT ILLUSTRATED

D20399	Parts Manual
MG2-OILFREE	General Manual
D20370	Label Specifications

- Key No's 58, 59, 60, 61, 62 and 65 can be purchased as KK-4835 Connecting Rod Kit.
- x Key No's 8 and 9 can be purchased as KK-5041 Muffler/Foam Kit.
- + Key No's 58, 60, 62, 63 and 65 can be purchased as K-0058, Compression Ring Kit.