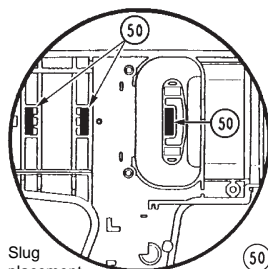




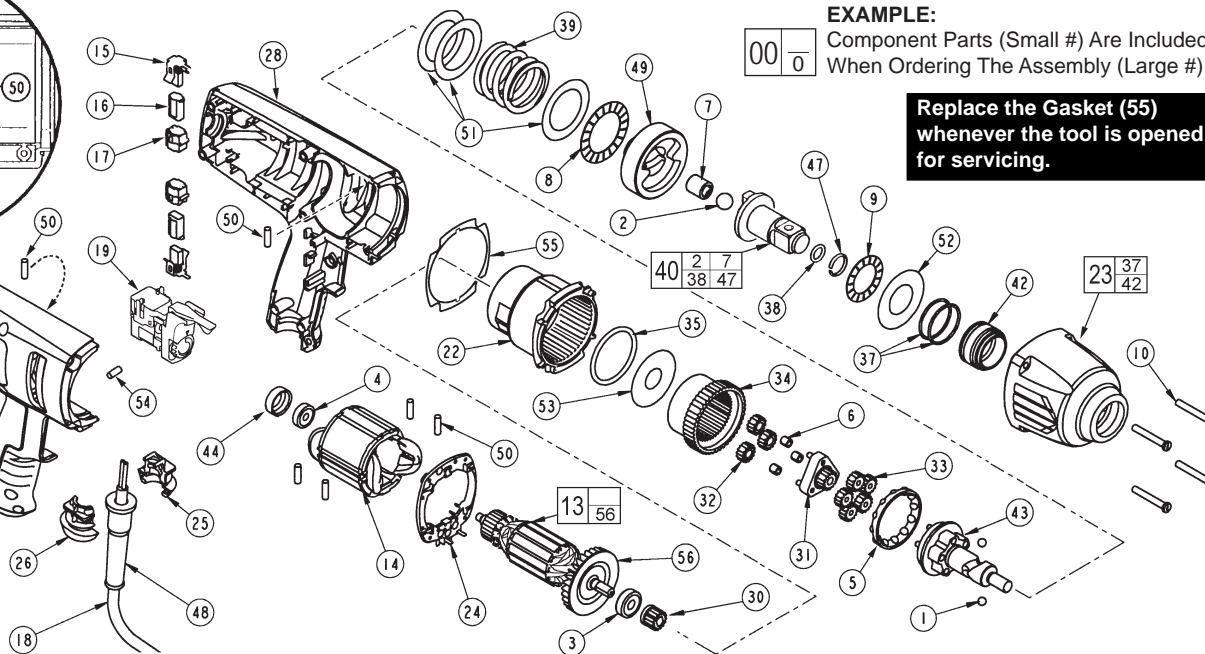
# SERVICE PARTS LIST

**BULLETIN NO.**  
**55-26-1810**

|                                                               |                |                                                  |             |
|---------------------------------------------------------------|----------------|--------------------------------------------------|-------------|
| <b>SPECIFY CATALOG NO. AND SERIAL NO. WHEN ORDERING PARTS</b> |                | REVISED BULLETIN                                 | DATE        |
| <b>3/4" D.I. IMPACT WRENCH - 220/240V Brazil</b>              |                |                                                  | Dec. 2012   |
| <b>CATALOG NO.</b>                                            | <b>9075-59</b> | <b>STARTING SERIAL NO.</b>                       | <b>E96A</b> |
|                                                               |                | <b>WIRING INSTRUCTION</b><br><b>See Page Two</b> |             |



Slug placement is for both handle halves.



**EXAMPLE:**  
Component Parts (Small #) Are Included When Ordering The Assembly (Large #).

**Replace the Gasket (55) whenever the tool is opened for servicing.**

| FIG. | PART NO.   | DESCRIPTION OF PART           | NO.REQ. |
|------|------------|-------------------------------|---------|
| 1    | 02-02-0250 | 1/4" Ball                     | (2)     |
| 2    | -----      | 1/2" Ball                     | (1)     |
| 3    | 02-04-0852 | Ball Bearing                  | (1)     |
| 4    | 02-04-0645 | Ball Bearing                  | (1)     |
| 5    | 02-40-0050 | Angular Contact Bearing       | (1)     |
| 6    | 02-50-3250 | Unit Cage Bearing             | (3)     |
| 7    | -----      | Drawn Cup Bearing             | (1)     |
| 8    | 02-80-0200 | Thrust Bearing                | (1)     |
| 9    | 02-80-3256 | Thrust Bearing                | (1)     |
| 10   | 05-88-5988 | K50 x 35mm Screw              | (4)     |
| 11   | 06-95-6290 | M5 x 2.24 x 18 Plastite Screw | (6)     |
| 12   | -----      | Service Nameplate             | (1)     |
| 13   | 16-14-2220 | Armature                      | (1)     |
| 14   | 18-04-2210 | Field                         | (1)     |
| 15   | 22-18-0040 | Brush Assembly                | (2)     |
| 16   | 22-20-0110 | Brush Tube                    | (2)     |
| 17   | 22-20-0465 | Brush Tube Holder             | (2)     |
| 18   | 22-64-5263 | Cord                          | (1)     |
| 19   | 23-66-2775 | Switch                        | (1)     |
| 22   | 28-14-0175 | Gearcase                      | (1)     |
| 23   | 14-38-0100 | Front Housing Assembly        | (1)     |
| 24   | 31-15-2045 | Field Connector               | (1)     |
| 25   | 31-17-0261 | Cord Clamp                    | (1)     |
| 26   | 31-17-0271 | Cord Clamp                    | (1)     |
| 27   | 31-44-2176 | Right Handle                  | (1)     |
| 28   | 31-44-2181 | Left Handle                   | (1)     |
| 30   | 32-60-0150 | Sun Gear                      | (1)     |
| 31   | 32-60-0175 | Sun Gear                      | (1)     |
| 32   | 32-62-0200 | Planet Gear                   | (3)     |
| 33   | 32-62-0215 | Planet Gear                   | (5)     |
| 34   | 32-65-0005 | Ring Gear                     | (1)     |
| 35   | 34-40-0070 | O-Ring                        | (1)     |
| 37   | -----      | O-Ring                        | (2)     |
| 38   | 34-40-1210 | O-Ring                        | (1)     |
| 39   | 40-50-0241 | Spring                        | (1)     |
| 40   | 14-73-0156 | Anvil Assembly                | (1)     |
| 42   | -----      | Bushing                       | (1)     |
| 43   | 14-73-0300 | Cam Shaft Assembly            | (1)     |
| 44   | 42-96-0015 | Bearing Cup                   | (1)     |
| 47   | 44-90-4540 | Friction Ring                 | (1)     |
| 48   | 44-76-0210 | Cord Protector                | (1)     |
| 49   | 44-82-0210 | Ram                           | (1)     |
| 50   | 45-30-0025 | Rubber Slug                   | (6)     |

| FIG. | PART NO.   | DESCRIPTION OF PART          | NO.REQ. |
|------|------------|------------------------------|---------|
| 51   | 45-88-0535 | Washer                       | (3)     |
| 52   | 45-88-1575 | Washer                       | (1)     |
| 53   | 45-88-3250 | Washer                       | (1)     |
| 54   | 45-30-0021 | Slug                         | (1)     |
| 55   | 43-44-0991 | Gasket                       | (1)     |
| 56   | 22-84-0375 | Fan                          | (1)     |
| 57   | 23-94-0275 | Wire Assembly (See page two) | (1)     |
| 58   | 23-94-0276 | Wire Assembly (See page two) | (1)     |

**FIG. 4 NOTES:**  
Orient bearing seal (black side) toward the commutator.

10 Torque to 45-50 in./lbs.

11 Torque to 25-30 in./lbs.

16 At the time of brush replacement, the tool should be relubricated with Type "J" Grease, No.49-08-4220.

**FIG. 23,34,42, 43,49 LUBRICATION (Type "J" Grease, No.49-08-4220):**  
Lightly coat with grease the Ring Gear (34) and the bearing races of the Camshaft Planet Carrier (43), the back bearing surface of the Ram (49) and the I.D. the Front Housing Bushing (42).

7,40 Place a dab of grease in the Needle Bearing (7) inside the Anvil (40).

31,32,33,43 Fill with grease the center of the five Planet Gears (33) on the Camshaft Assembly (43). Fill the center of the three Planet Gears (32) on the Sun Gear (31).

49 Place approximately 1/2 oz. of grease in the front cavity of the Ram.

43 Place approximately 1/2 oz. grease on the Camshaft (43) inside the Spring (39).

# WIRING INSTRUCTIONS

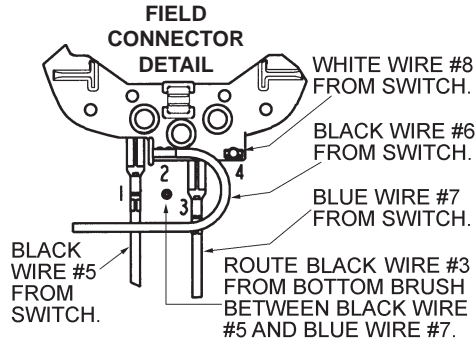
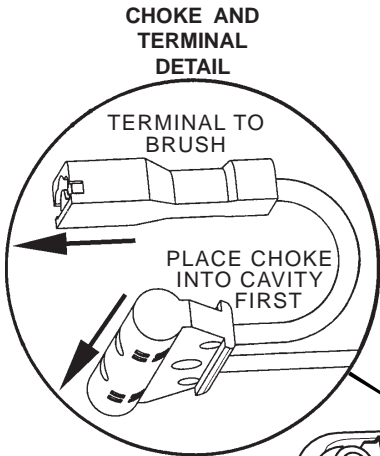
TITLE

**IMPACT WRENCH**

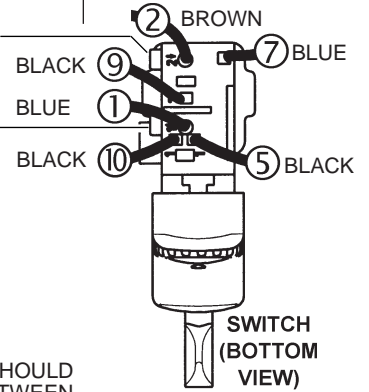
BULLETIN

MILWAUKEE ELECTRIC TOOL CORP. 13135 WEST LISBON RD. BROOKFIELD, WIS.

DATE

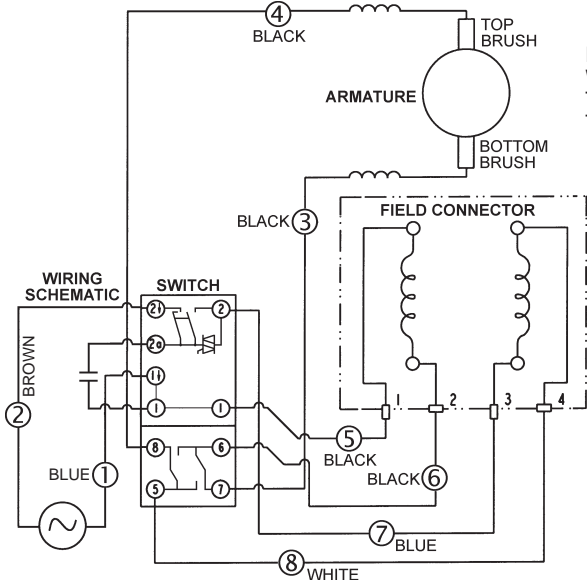
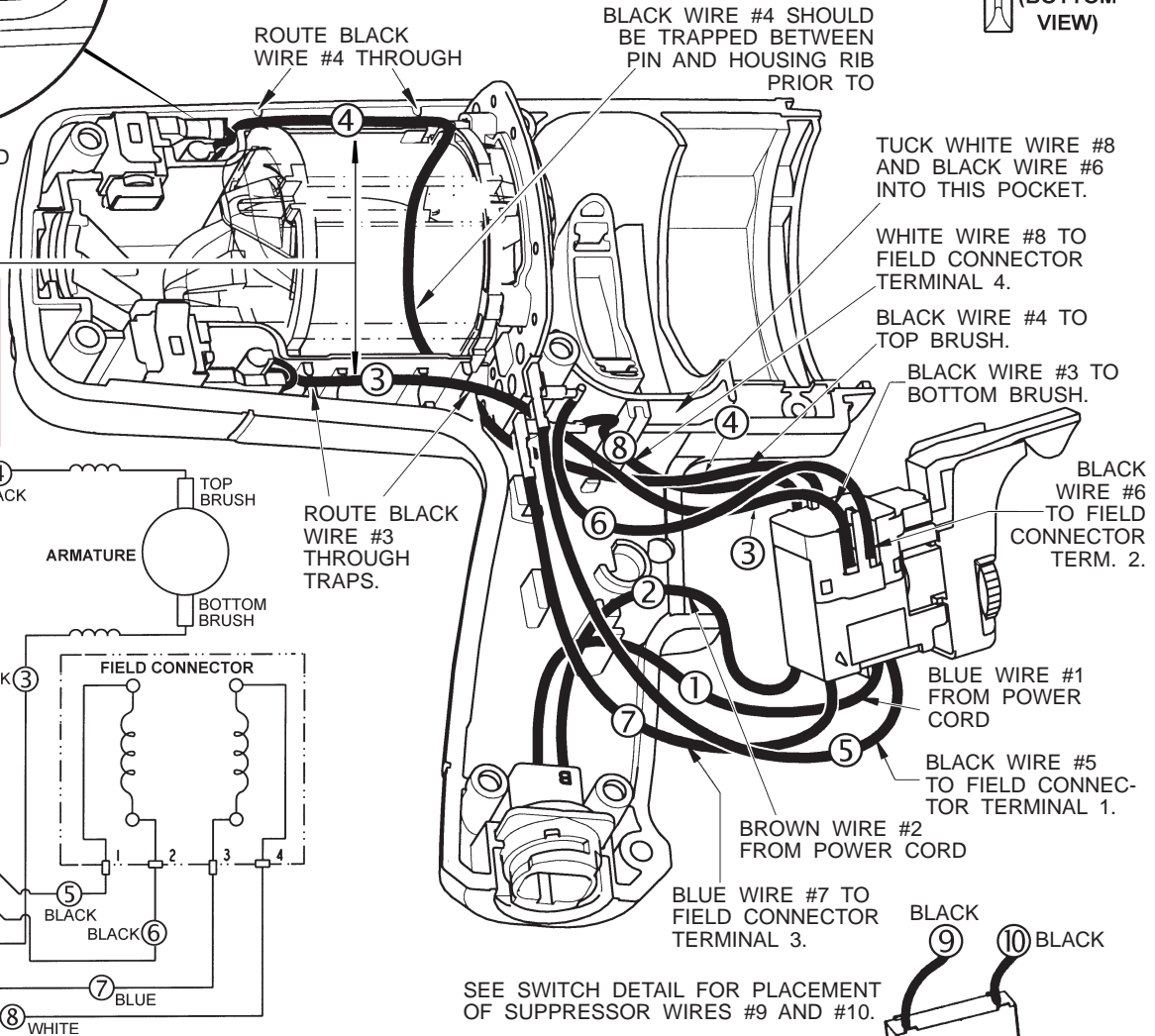


TORQUE SWITCH SCREWS TO 4-6 IN.-LBS.

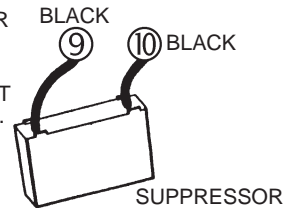


TUCK ALL EXCESS LEAD WIRE FROM #3 AND #4 INTO AREA BETWEEN TRAPS, AS SHOWN.

**NOTE:**  
Models 9075-59 and 9075-59A come with a power cord. Disregard the blade housing assembly. Also disregard the suppressor.



SEE SWITCH DETAIL FOR PLACEMENT OF SUPPRESSOR WIRES #9 AND #10.



## WIRING SPECIFICATIONS

| Wire No. | Wire Color | Origin or Part No. | Gauge | Length | Terminals, Connectors and End Wire Preparation   |
|----------|------------|--------------------|-------|--------|--------------------------------------------------|
| 1        | Blue       | Power Cord         | 16    | 2.85   | Component of the blade hsg. assy. or power cord. |
| 2        | Brown      | Power Cord         | 16    | 2.75   | Component of the blade hsg. assy. or power cord. |
| 3        | Black      | 23-94-0275         | 18    | -----  | Component of 23-94-0275 leadwire assembly.       |
| 4        | Black      | 23-94-0276         | 18    | -----  | Component of 23-94-0276 leadwire assembly.       |
| 5        | Black      | 23-94-0250         | 18    | 4.75   | Strip .188 for T1. Strip .32 and tin.            |
| 6        | Black      | 23-94-0240         | 18    | 2.75   | Strip .188 for T2 and T3.                        |
| 7        | Blue       | 23-94-0245         | 18    | 4.75   | Strip .188 for T1. Strip .32 and tin.            |
| 8        | White      | 23-94-0255         | 18    | 2.90   | Strip .188 for T1 and T2.                        |
| 9        | Black      | Suppressor         | ----- | -----  | Component of suppressor assembly.                |
| 10       | Black      | Suppressor         | ----- | -----  | Component of suppressor assembly.                |

BULK LEAD WIRE - BULLETIN 58-01-0003

**NOTE:**

All lead lengths are before stripping. All leads must be held to ± .125" unless specified elsewhere.

| TERMINAL DESCRIPTION |            |      |
|----------------------|------------|------|
| Code                 | Part No.   | Qty. |
| T1                   | 23-74-0010 | 3    |
| T2                   | 23-74-1060 | 4    |
| T3                   | 23-74-1100 | 1    |