



# SERVICE PARTS LIST

**BUL. 54-26-1001**

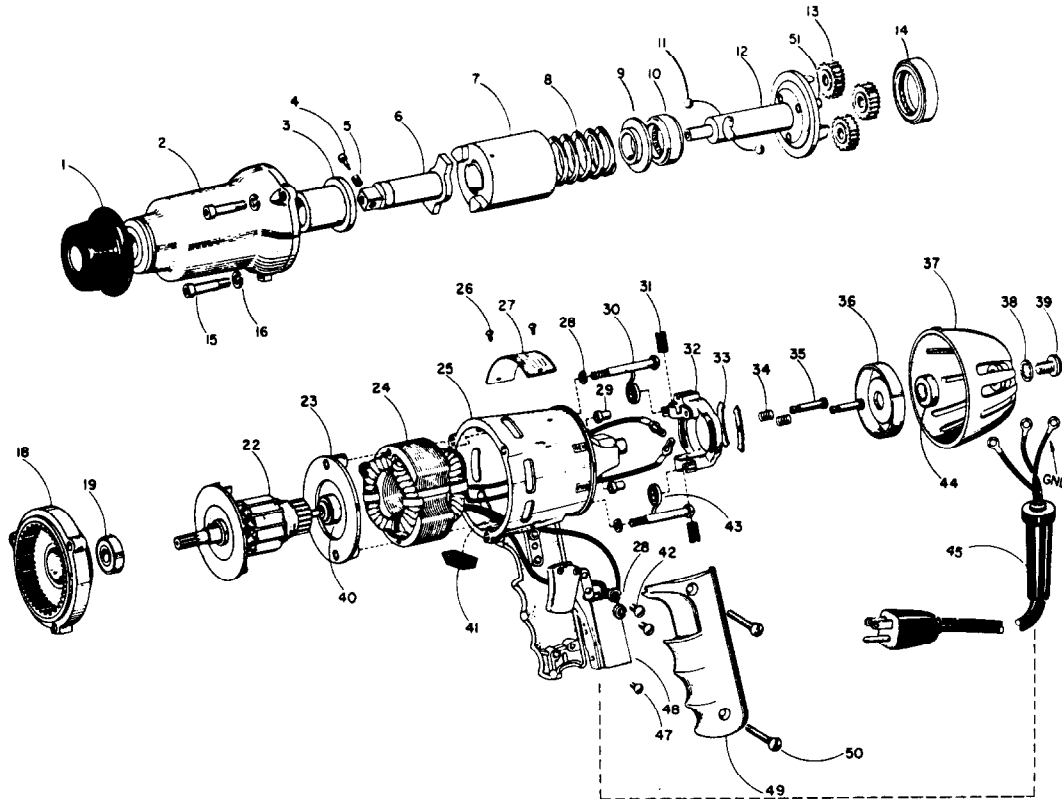
## IMPACT WRENCH

REVISED BUL. 6320-2      DATE Feb. '68  
WIRING INSTR.

**Catalog No. 9000**

Starting Serial No. **320-1400**

Both Model and Serial No. must be furnished to obtain correct parts.



**CORRECTS & SUPERSEDES  
SERVICE BULLETIN 6320-2  
DATED 10/6/65**

### ILLUSTRATED PARTS

FIG.	PART NO.	DESCRIPTION OF PART	NO. REQ.	FIG.	PART NO.	DESCRIPTION OF PART	NO. REQ.
1	42-52-0110	Protection Cap		27	12-98-6100	Name Plate	
2	14-30-0230	Gear Case Assy. (Includes item 3)		28	06-97-3200	No. 8 Split Ring Lock Washer	(4)
3	42-40-0250	Bushing		29	23-16-0230	Bushing Insulator	(2)
★ 4	44-70-0140	Plunger		30	06-81-4575	8-32 x 2 Rd. Hd. Machine Screw	(2)
★ 5	40-50-7550	Spring		31	22-16-0210	Brush	(2)
★ 6	42-06-0070	Anvil (Includes item 4, 5)		32	23-39-0050	Rocker Ring	
7	43-81-0050	Impacter		33	22-58-0050	Contact	(2)
8	40-50-4900	Impacter Spring		34	40-50-5000	Contact Spring	(2)
9	43-56-0090	Spring Guide		35	23-74-0230	Pin Terminal	(2)
10	02-80-1550	Thrust Bearing		36	22-32-0120	Insulation Cap	
11	02-02-0280	9/32 Steel Ball	(2)	37	28-12-0201	End Cap	
12	36-10-0551	Cam Shaft (Includes item 51 (3))		38	06-97-2650	No. 5/16 Int. Tooth Lock Washer	
13	32-62-0051	Planet Gear	(3)	39	06-75-4350	5/16-24 x 1/2 Socket Hd. Cap Screw	
14	02-80-1850	Thrust Bearing		40	02-04-0600	Ball Bearing	
15	06-75-2625	10-32 x 1-1/8 Socket Hd. Cap Screw	(3)	41	23-16-0240	Rubber Insulator	
16	06-97-3400	No. 10 Split Ring Lock Washer	(3)	42	06-81-4565	8-32 x 1/4 Rd. Hd. Machine Screw	(2)
18	28-28-1321	Diaphragm (Includes item 51)		43	23-52-0140	Brush Spring	(2)
19	02-04-1000	Ball Bearing		44	45-88-0460	Neoprene Rubber Washer	
22	16-42-1320	Armature Assy.		45	22-64-0360	Cord Set	
23	42-14-0080	Baffle		47	06-81-8625	6-32 x 1/4 Rd. Hd. Machine Sems (bronze)	
24	18-42-1150	Field Assy.		★ 48	23-66-0500	Switch	
25	28-50-5071	Motor Housing		49	28-20-3551	Handle Cover	
26	06-77-0050	No. 0-5/32 Driv-In Screw	(2)	50	06-81-3750	8-32 x 1 Oval Hd. Screw	(2)
				51	45-58-0160	Planet Gear Stud	(2)

#### MISCELLANEOUS PARTS NOT SHOWN

PART NO.	DESCRIPTION OF PART
49-96-0070	5/32 Allen Wrench